



Chipsmall Limited consists of a professional team with an average of over 10 year of expertise in the distribution of electronic components. Based in Hongkong, we have already established firm and mutual-benefit business relationships with customers from,Europe,America and south Asia,supplying obsolete and hard-to-find components to meet their specific needs.

With the principle of "Quality Parts,Customers Priority,Honest Operation,and Considerate Service",our business mainly focus on the distribution of electronic components. Line cards we deal with include Microchip,ALPS,ROHM,Xilinx,Pulse,ON,Everlight and Freescale. Main products comprise IC,Modules,Potentiometer,IC Socket,Relay,Connector.Our parts cover such applications as commercial,industrial, and automotives areas.

We are looking forward to setting up business relationship with you and hope to provide you with the best service and solution. Let us make a better world for our industry!



Contact us

Tel: +86-755-8981 8866 Fax: +86-755-8427 6832

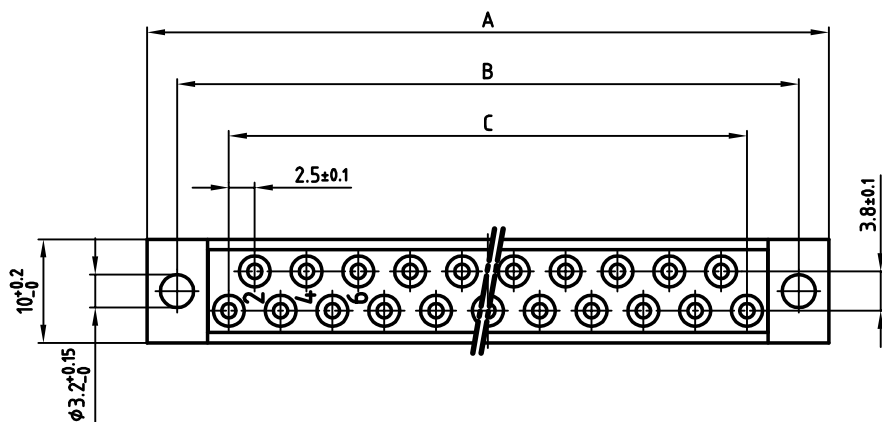
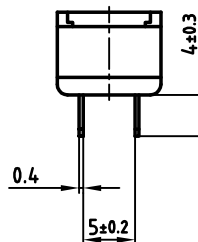
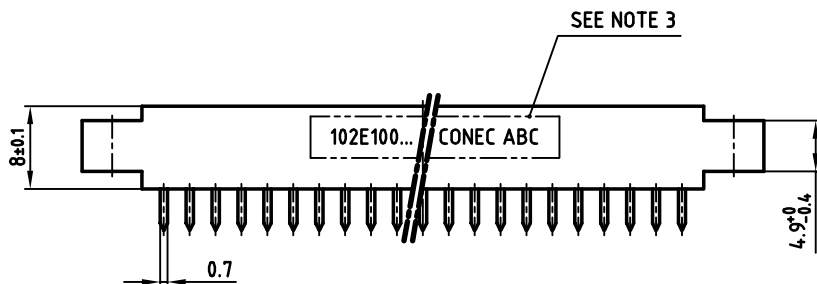
Email & Skype: info@chipsmall.com Web: www.chipsmall.com

Address: A1208, Overseas Decoration Building, #122 Zhenhua RD., Futian, Shenzhen, China

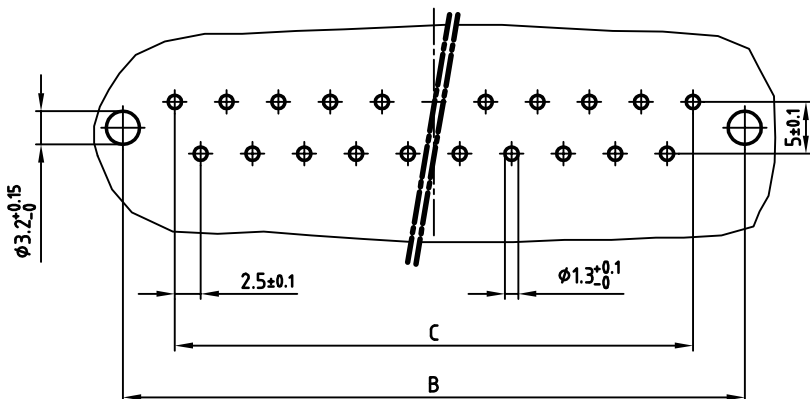


used for: DIN 41617

Polzahl No. of pos.	A ±0.2	B ±0.1	C ±0.1	Art.-Nr. Part-No.
13	45.8	40	12x2.5=30	102E10049X
21	65.8	60	20x2.5=50	102E10069X
31	90.8	85	30x2.5=75	102E10089X



Leiterplattenbohrbild
P.C.B.-HOLE DRILLINGS



NOTES:

- INSULATOR: PC GF UL 94 V-0, GREY
- CONTACTS: COPPER ALLOY
PLATING: HARD SILVER PLATED
500 MATING CYCLES
- CONNECTOR IS PART MARKED: PART-NO CONEC ABC

Directive 2002/95/EC
„RoHS“
Compliant

APPROVAL * FREIGABE * DEBLOCAGE * AUTORIZACION * APPROVAL

CUSTOMER APPROVAL DATE:

NAME: TITLE:

COMPANY NAME:

APPROVAL * FREIGABE * DEBLOCAGE * AUTORIZACION * APPROVAL

THIS DRAWING MAY NOT BE COPIED OR REPRODUCED IN ANY WAY, AND MAY NOT BE PASSED ON TO A THIRD PARTY, WITHOUT WRITTEN PERMISSION. OWNERSHIP AND COPYRIGHT OF CONEC GmbH DO NOT ALTER CAD DRAWING BY HAND

rev.	description	date	name
1 x b	Ä3723	18.08.2010	K.H.
a			

tolerance		scale:	2:1
	dim. in mm	material:	SEE NOTES
2008	date	name	title:
drawn	19.08.	Sonnenberg	FEMALE CONNECTOR
appd.	19.08.	Mickenbecker	13pos. - 31pos.
norm	DIN 41617		with straight solder pins
d-old			dwg no: AutoCAD 2006 DIN-A
			10K2A002
			sh: 1/1
part no: SEE TABLE			

6

5

4

2

1