



Chipsmall Limited consists of a professional team with an average of over 10 year of expertise in the distribution of electronic components. Based in Hongkong, we have already established firm and mutual-benefit business relationships with customers from,Europe,America and south Asia,supplying obsolete and hard-to-find components to meet their specific needs.

With the principle of “Quality Parts,Customers Priority,Honest Operation,and Considerate Service”,our business mainly focus on the distribution of electronic components. Line cards we deal with include Microchip,ALPS,ROHM,Xilinx,Pulse,ON,Everlight and Freescale. Main products comprise IC,Modules,Potentiometer,IC Socket,Relay,Connector.Our parts cover such applications as commercial,industrial, and automotives areas.

We are looking forward to setting up business relationship with you and hope to provide you with the best service and solution. Let us make a better world for our industry!



## Contact us

Tel: +86-755-8981 8866 Fax: +86-755-8427 6832

Email & Skype: info@chipsmall.com Web: www.chipsmall.com

Address: A1208, Overseas Decoration Building, #122 Zhenhua RD., Futian, Shenzhen, China



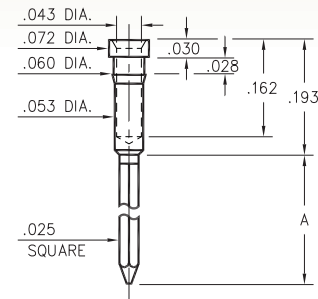
# MALE PCB PINS

## WRAPOST TERMINALS

### 1030 → 1032

103X-X-05-XX-00-00-01-0

Press-fit in .057 mounting hole

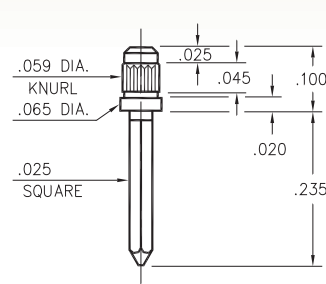


Basic Part Number	# of Wraps	Length A
1032-1	1	.260
1031-2	2	.360
1030-3	3	.500

### 1216

1216-0-05-XX-00-00-01-0

Press-fit in .056 mounting hole

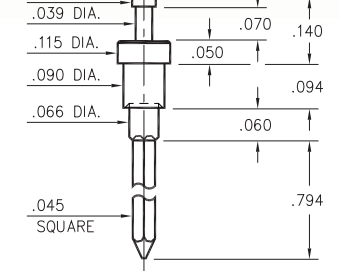


### 1095

1095-0-05-XX-00-00-01-0

Swage mount in .094 hole

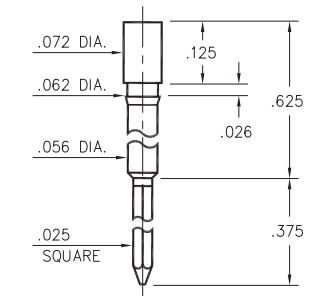
For a .062 thick board



### 1214

1214-0-05-XX-00-00-01-0

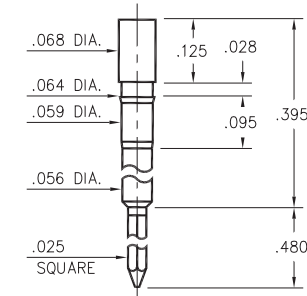
Press-fit in .059 mounting hole



### 1212

1212-0-05-XX-00-00-01-0

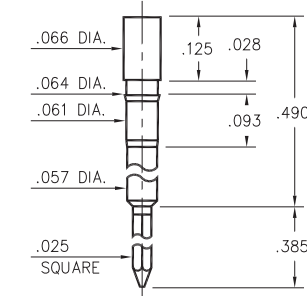
Press-fit in .061 mounting hole



### 1213

1213-0-05-XX-00-00-01-0

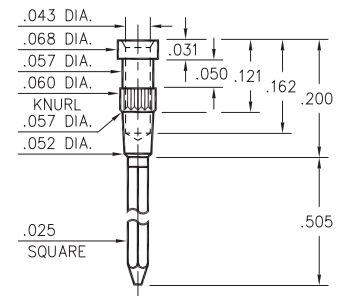
Press-fit in .061 mounting hole



### 0318

0318-3-05-XX-00-00-01-0

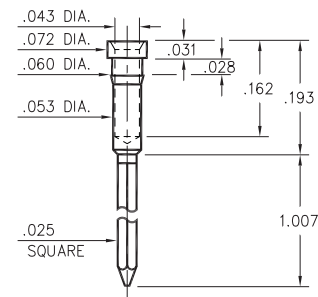
Press-fit in .057 mounting hole



### 1302

1302-0-05-XX-00-00-01-0

Press-fit in .057 mounting hole

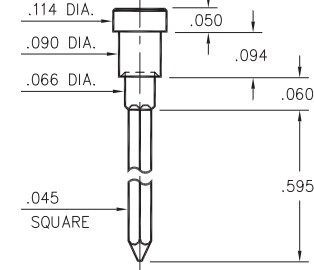


### 1097

1097-0-05-XX-00-00-01-0

Swage mount in .094 hole

For a .062 thick board



#### SPECIFICATIONS:

**Pin Material:** Brass Alloy 360, 1/2 Hard  
( Except swage pins which are annealed )

**Dimensions:** Inches

**Tolerances On:** Lengths: ± .005  
Diameters: ± .002  
Angles: ± 2°



ORDER CODE: XXXX - X - 05 - XX - 00 - 00 - 01 - 0

BASIC PART #

SPECIFY PIN FINISH:

- 01 200 μ" TIN/LEAD OVER NICKEL
- ◆ 80 200 μ" TIN OVER NICKEL (RoHS)
- ◆ 15 10 μ" GOLD OVER NICKEL (RoHS)
- ◆ 21 20 μ" GOLD OVER NICKEL (RoHS)

