



Chipsmall Limited consists of a professional team with an average of over 10 year of expertise in the distribution of electronic components. Based in Hongkong, we have already established firm and mutual-benefit business relationships with customers from,Europe,America and south Asia,supplying obsolete and hard-to-find components to meet their specific needs.

With the principle of "Quality Parts,Customers Priority,Honest Operation,and Considerate Service",our business mainly focus on the distribution of electronic components. Line cards we deal with include Microchip,ALPS,ROHM,Xilinx,Pulse,ON,Everlight and Freescale. Main products comprise IC,Modules,Potentiometer,IC Socket,Relay,Connector.Our parts cover such applications as commercial,industrial, and automotives areas.

We are looking forward to setting up business relationship with you and hope to provide you with the best service and solution. Let us make a better world for our industry!



Contact us

Tel: +86-755-8981 8866 Fax: +86-755-8427 6832

Email & Skype: info@chipsmall.com Web: www.chipsmall.com

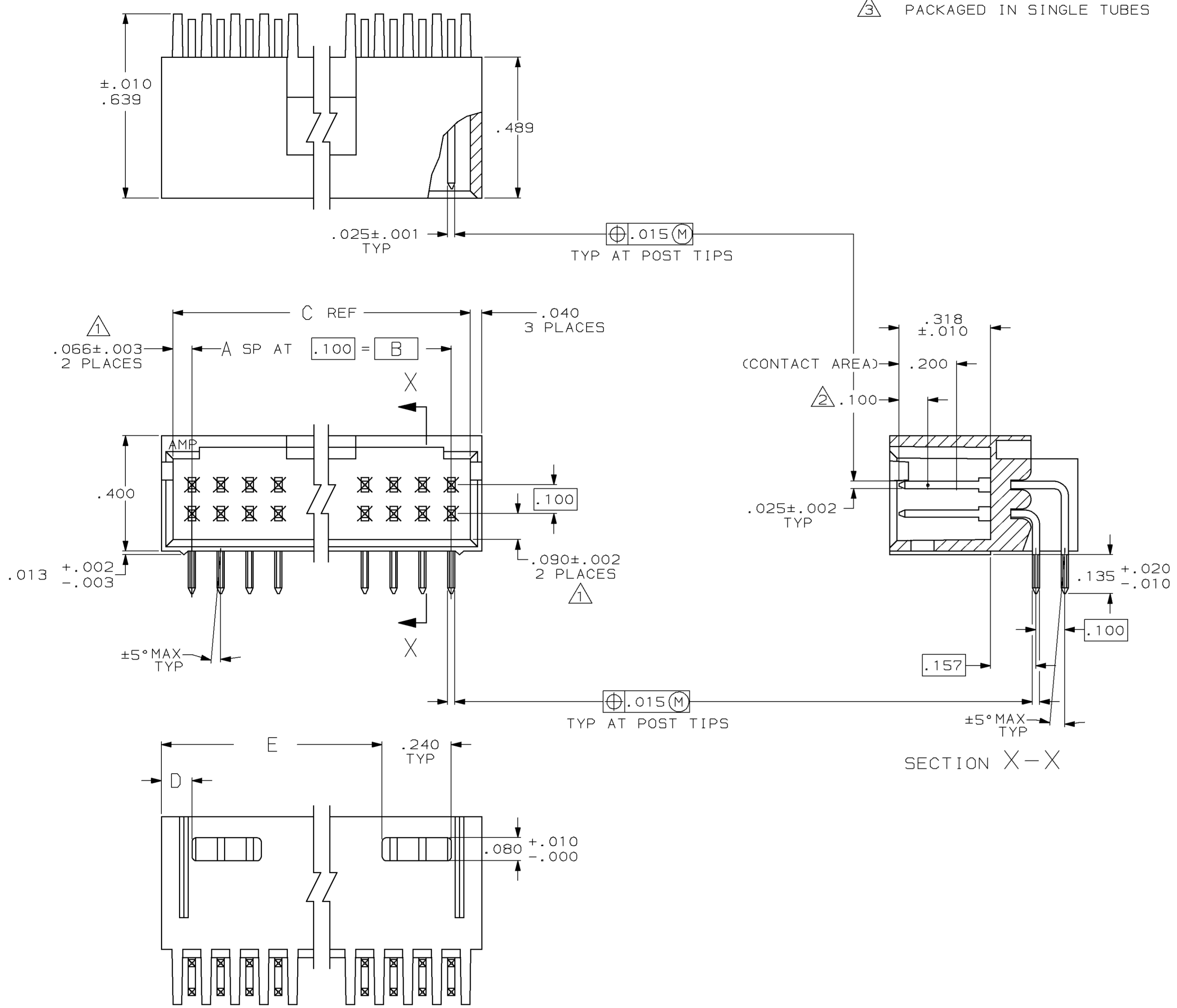
Address: A1208, Overseas Decoration Building, #122 Zhenhua RD., Futian, Shenzhen, China



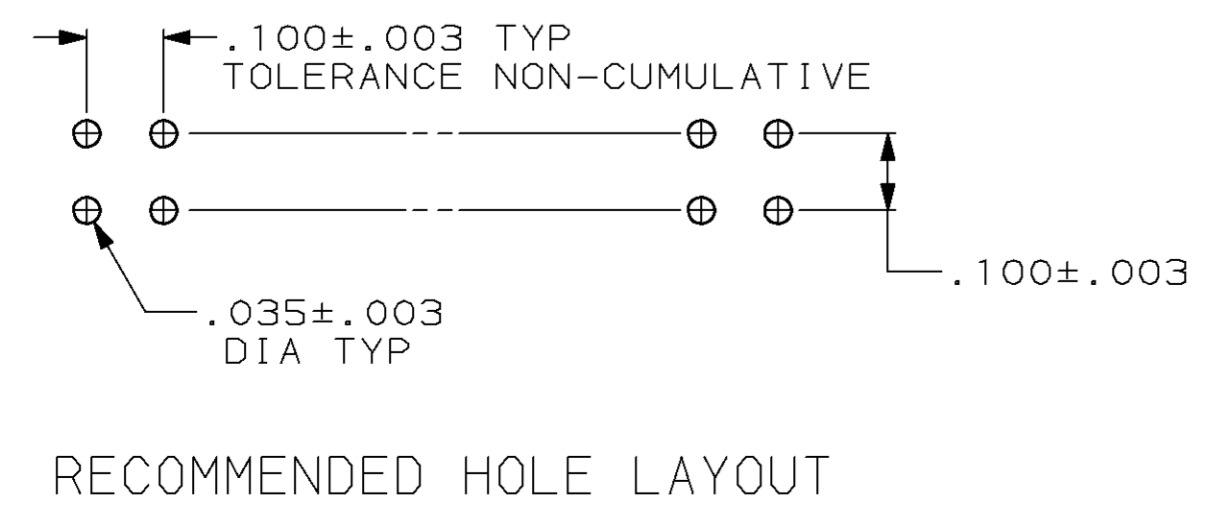
DRAWING MADE IN THIRD ANGLE PROJECTION
 THIS DRAWING IS UNPUBLISHED. RELEASED FOR PUBLICATION
 © COPYRIGHT 19 BY AMP INCORPORATED, HARRISBURG, PA. ALL INTERNATIONAL RIGHTS RESERVED. AMP PRODUCTS MAY BE COVERED BY U.S. AND FOREIGN PATENTS AND/OR PATENTS PENDING.

MOD		LOC		DIST		REV		REVISIONS	
25	AD	39	P	F	ZONE	LTR	DESCRIPTION	DATE	APPD
						A	REV & REDRAWN ECN 1610	-	-
						B	REV PER AR-2217	BM	-
						C	RV PER AR-2605	SH	7/89
						D	REV PER ECN AR2699	10-03-89	KIH
						E	REV LOC & DIST AD-4171	3-90	BF
						F	ECN AD-4707	08/02/90	KIH
						G	REV PER AD-5084	1-31-91	-
						H	REV PER 0310-0040-96	12-14-96	SAS
						J	REV PER 0310-0430-97	19JUN98	SAS

- ① THE NOTED DIMENSIONS APPLY AT THE INTERSECTION OF THE POST AND HOUSING
- ② POINT OF MEASUREMENT FOR PLATING THICKNESS
- ③ PACKAGED IN SINGLE TUBES



---	.106	.332	.200	2	6	3-103166-6
3.506	.106	3.732	3.600	36	74	3-103166-5
3.406	.106	3.632	3.500	35	72	3-103166-4
3.306	.106	3.532	3.400	34	70	3-103166-3
3.206	.106	3.432	3.300	33	68	3-103166-2
3.106	.106	3.332	3.200	32	66	3-103166-1
3.006	.106	3.232	3.100	31	64	3-103166-0
2.906	.106	3.132	3.000	30	62	2-103166-9
2.806	.106	3.032	2.900	29	60	2-103166-8
2.706	.106	2.932	2.800	28	58	2-103166-7
2.606	.106	2.832	2.700	27	56	2-103166-6
2.506	.106	2.732	2.600	26	54	2-103166-5
2.406	.106	2.632	2.500	25	52	2-103166-4
2.306	.106	2.532	2.400	24	50	2-103166-3
2.206	.106	2.432	2.300	23	48	2-103166-2
2.106	.106	2.332	2.200	22	46	2-103166-1
2.006	.106	2.232	2.100	21	44	2-103166-0
1.906	.106	2.132	2.000	20	42	1-103166-9
1.806	.106	2.032	1.900	19	40	1-103166-8
1.706	.106	1.932	1.800	18	38	1-103166-7
1.606	.106	1.832	1.700	17	36	1-103166-6
1.506	.106	1.732	1.600	16	34	1-103166-5
1.406	.106	1.632	1.500	15	32	1-103166-4
1.306	.106	1.532	1.400	14	30	1-103166-3
1.206	.106	1.432	1.300	13	28	1-103166-2
1.106	.106	1.332	1.200	12	26	1-103166-1
1.006	.106	1.232	1.100	11	24	1-103166-0
.906	.106	1.132	1.000	10	22	103166-9
.806	.106	1.032	.900	9	20	103166-8
---	.406	.932	.800	8	18	103166-7
---	.306	.832	.700	7	16	103166-6
---	.306	.732	.600	6	14	103166-5
---	.206	.632	.500	5	12	103166-4
---	.206	.532	.400	4	10	103166-3
---	.106	.432	.300	3	8	103166-2
---	.106	.332	.200	2	6	103166-1
E	D	C	B	A	NO OF POSN	ASSEMBLY PART NUMBER



UNLESS OTHERWISE SPECIFIED DIMENSIONS ARE IN INCHES TOLERANCES ON:

2 PL DEC \pm	DR 7-27-87 H MOLL	AMP INCORPORATED Harrisburg, Pa. 17105
3 PL DEC $\pm .005$	CHK 7-29-87 L A MAYER	
ANGLES \pm	APPD 7-28-87 R FEIDT	NAME HDR ASSY, MOD II, SHROUDED, 4 SIDES, DBL ROW, .100X.100 ϕ , RIGHT ANGLE, W/ .025 SQ POSTS
MATERIAL, HOUSING: FLAME RETARDANT THERMOPLASTIC, COLOR-BLACK	APPD 7-29-87 R ELICKER PRODUCT SPEC	SIZE D
POSTS: PHOS BRONZE FINISH, POSTS: .000030 GOLD IN CONTACT AREA, .000100-.000200 MATTE TIN- LEAD ON SOLDER TAIL, ALL OVER .000050 NICKEL	APPLICATION SPEC WEIGHT	FSCM NO 00779 DRAWING NO 103166
		SCALE 4:1 SHEET 1 OF 1