



Chipsmall Limited consists of a professional team with an average of over 10 year of expertise in the distribution of electronic components. Based in Hongkong, we have already established firm and mutual-benefit business relationships with customers from,Europe,America and south Asia,supplying obsolete and hard-to-find components to meet their specific needs.

With the principle of “Quality Parts,Customers Priority,Honest Operation,and Considerate Service”,our business mainly focus on the distribution of electronic components. Line cards we deal with include Microchip,ALPS,ROHM,Xilinx,Pulse,ON,Everlight and Freescale. Main products comprise IC,Modules,Potentiometer,IC Socket,Relay,Connector.Our parts cover such applications as commercial,industrial, and automotives areas.

We are looking forward to setting up business relationship with you and hope to provide you with the best service and solution. Let us make a better world for our industry!



Contact us

Tel: +86-755-8981 8866 Fax: +86-755-8427 6832

Email & Skype: info@chipsmall.com Web: www.chipsmall.com

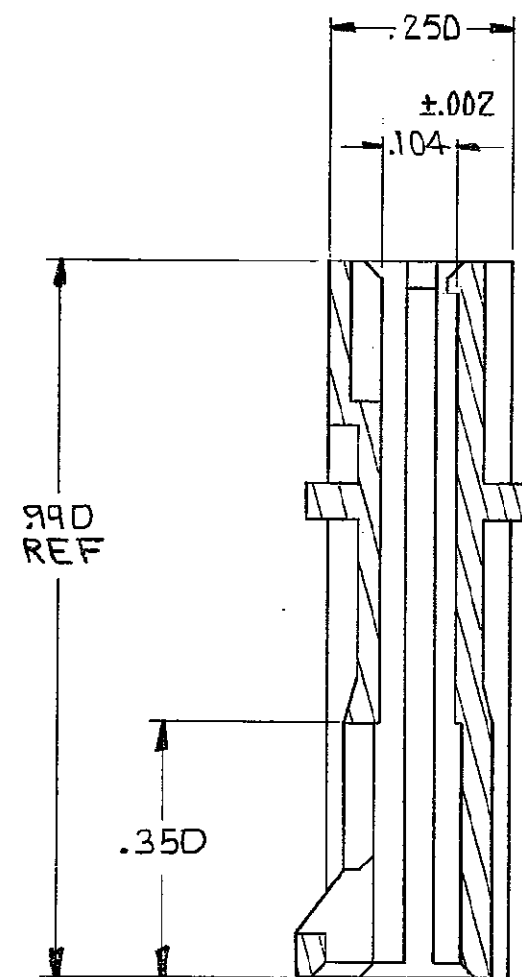
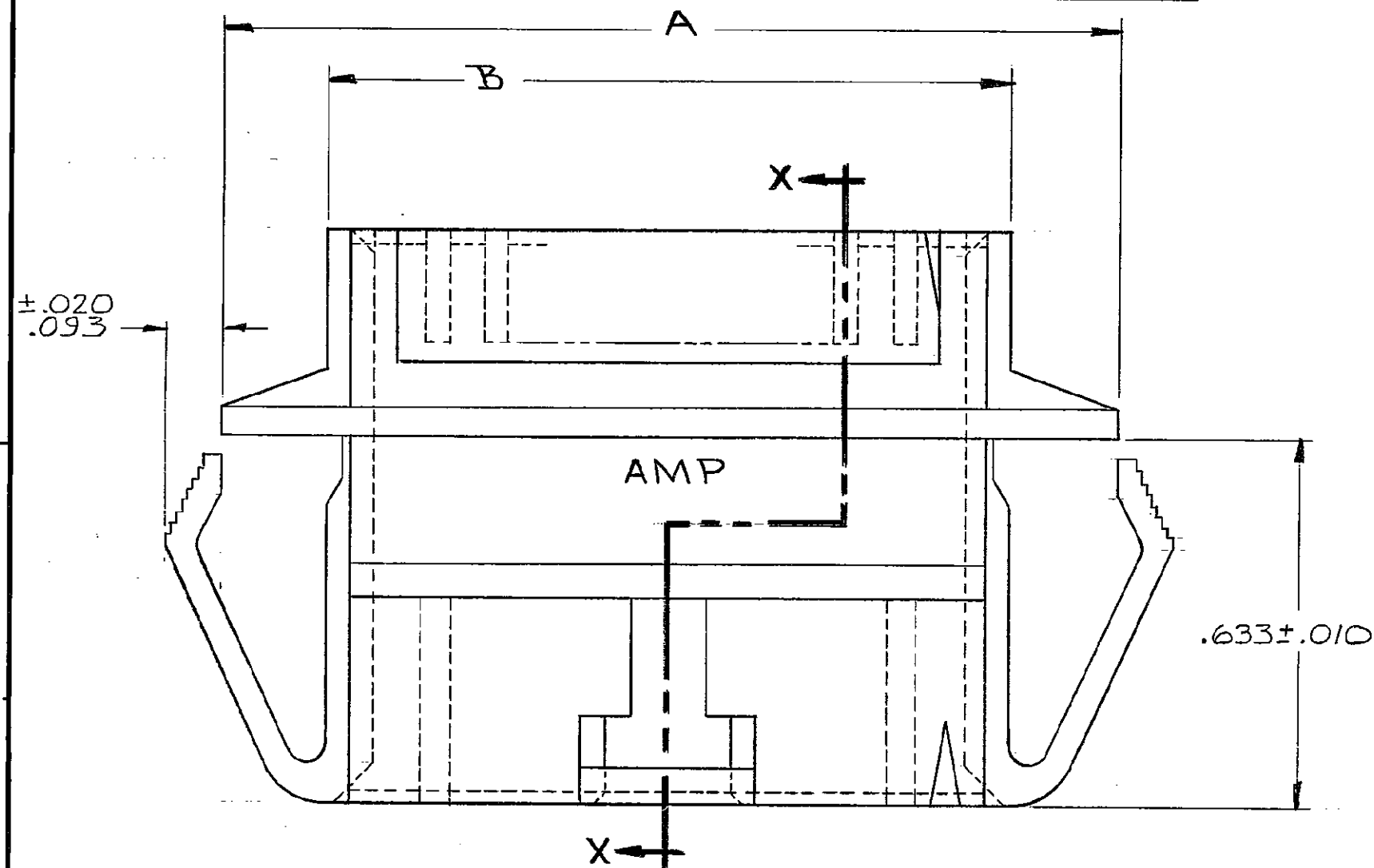
Address: A1208, Overseas Decoration Building, #122 Zhenhua RD., Futian, Shenzhen, China



THIS DRAWING IS UNPUBLISHED. RELEASED FOR PUBLICATION

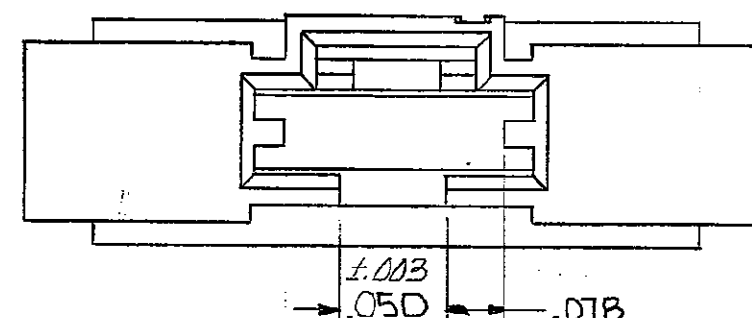
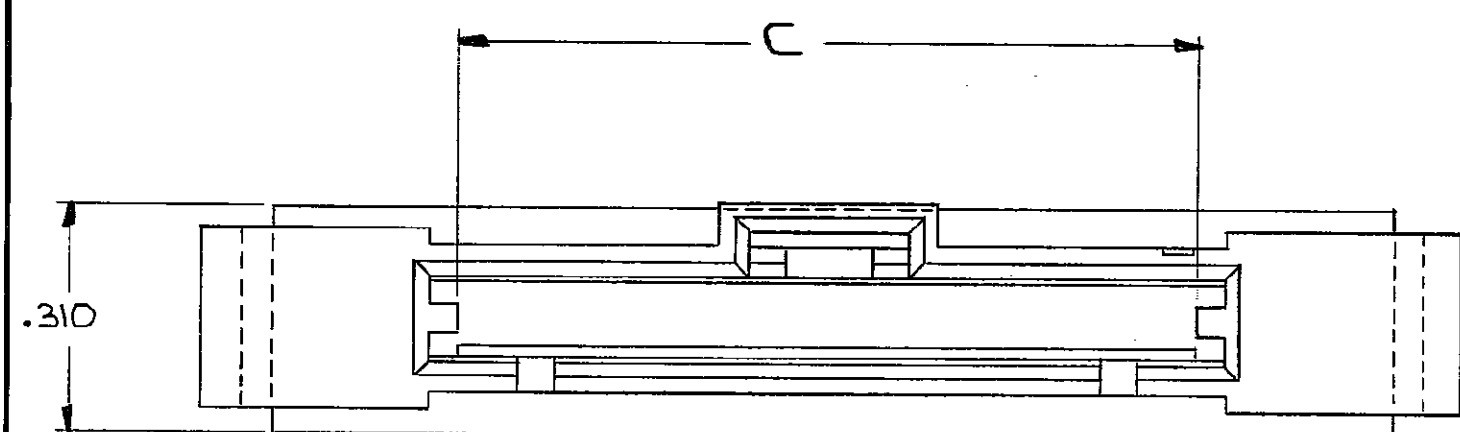
© COPYRIGHT

REVISIONS						
P	F	ZONE	LTR	DESCRIPTION	DATE	APPROVED
		G2		REVISED PER ECO-11-005140	30MAR11	HMR

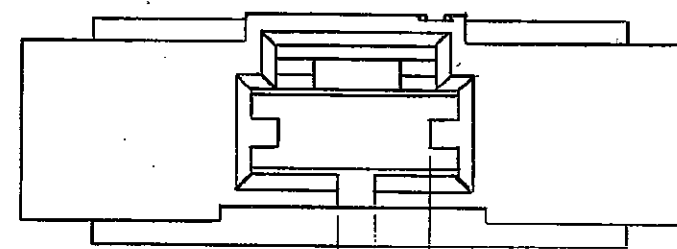


SECTION X-X

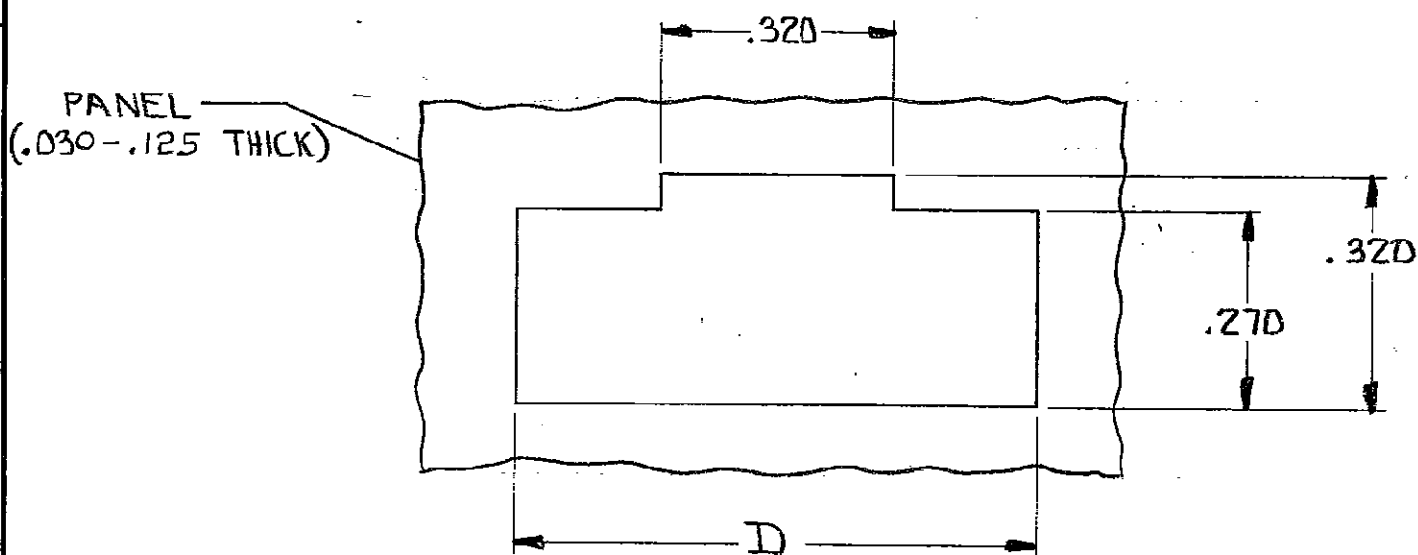
- 1. SHROUD ACCEPTS RIBBED PIN ASSEMBLIES
- 2. SHROUD MATES WITH LATCHING RECEPTACLE ASSEMBLIES
- 3. OBSOLETE PARTS: OBSOLETE CIS STREAMLINING PER D.RENAUD/D.SINISI



DETAIL FOR -2 ONLY (3 POSITION)



DETAIL FOR -1 ONLY (2 POSITION)



RECOMMENDED PANEL CUTOUT

3	OBSOLETE	2.925	2.505	2.665	3.035	25	2-103682-4
		2.825	2.405	2.565	2.935	24	2- -3
	OBSOLETE	2.725	2.305	2.465	2.835	23	2- -2
	3	2.625	2.205	2.365	2.735	22	2- -1
		2.525	2.105	2.265	2.635	21	2- -0
		2.425	2.005	2.165	2.535	20	1- -9
		2.325	1.905	2.065	2.435	19	1- -8
	OBSOLETE	2.225	1.805	1.965	2.335	18	1- -7
	3	2.125	1.705	1.865	2.235	17	1- -6
		2.025	1.605	1.765	2.135	16	1- -5
	OBSOLETE	1.925	1.505	1.665	2.035	15	1- -4
		1.825	1.405	1.565	1.935	14	1- -3
		1.725	1.305	1.465	1.835	13	1- -2
		1.625	1.205	1.365	1.735	12	1- -1
	OBSOLETE	1.525	1.105	1.265	1.635	11	1- -0
		1.425	1.005	1.165	1.535	10	-9
		1.325	.905	1.065	1.435	9	-8
		1.225	.805	.965	1.335	8	-7
		1.125	.705	.865	1.235	7	-6
		1.025	.605	.765	1.135	6	-5
		.925	.505	.665	1.035	5	-4
		.825	.405	.565	.935	4	-3
		.725	.305	.465	.835	3	-2
		.625	.205	.365	.735	2	103682-1
		D	C	B	A	Nº OF POSITIONS	PART NO

103682

UNLESS OTHERWISE SPECIFIED DIMENSIONS ARE IN INCHES. TOLERANCES ON: DECIMALS ±.005 ANGLES ±	CONTRACT NO				
	DR			5/23/85	
MATERIAL BLACK THERMOPLASTIC	APPD	5/29/85	NAME SHROUD, PIN, PANEL MOUNT, AMPMODU MTE, SINGLE RDIV, .100 Ø		
	APPD	5/29/85			
FINISH	OSGN APPD	5/29/85	SIZE	FSCM NO	DRAWING NO
	OTHER APPD		C	00779	103682
		SCALE			SHEET