



Chipsmall Limited consists of a professional team with an average of over 10 year of expertise in the distribution of electronic components. Based in Hongkong, we have already established firm and mutual-benefit business relationships with customers from,Europe,America and south Asia,supplying obsolete and hard-to-find components to meet their specific needs.

With the principle of “Quality Parts,Customers Priority,Honest Operation,and Considerate Service”,our business mainly focus on the distribution of electronic components. Line cards we deal with include Microchip,ALPS,ROHM,Xilinx,Pulse,ON,Everlight and Freescale. Main products comprise IC,Modules,Potentiometer,IC Socket,Relay,Connector.Our parts cover such applications as commercial,industrial, and automotives areas.

We are looking forward to setting up business relationship with you and hope to provide you with the best service and solution. Let us make a better world for our industry!



Contact us

Tel: +86-755-8981 8866 Fax: +86-755-8427 6832

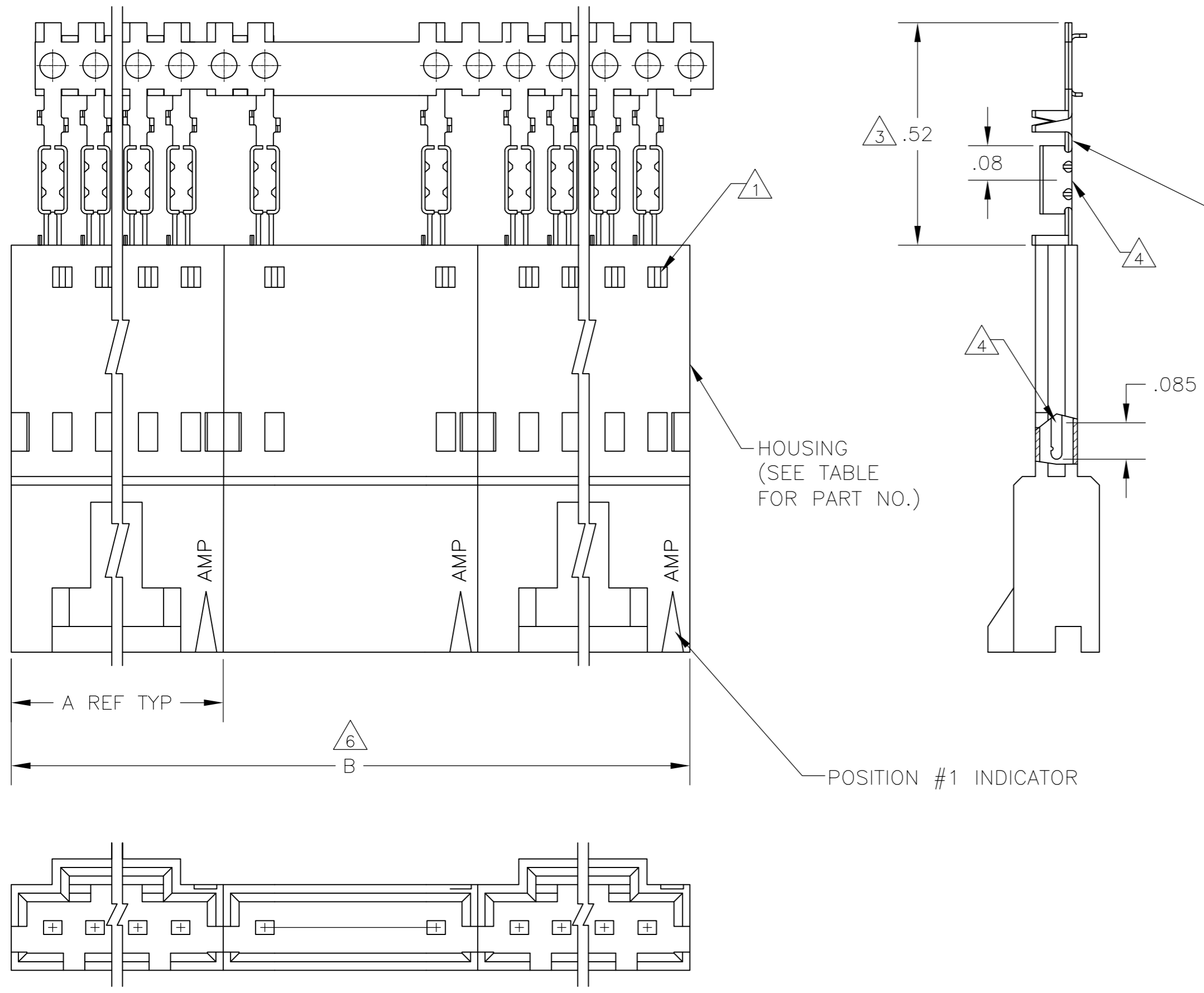
Email & Skype: info@chipsmall.com Web: www.chipsmall.com

Address: A1208, Overseas Decoration Building, #122 Zhenhua RD., Futian, Shenzhen, China



THIS DRAWING IS UNPUBLISHED. RELEASED FOR PUBLICATION
 © COPYRIGHT - By - ALL RIGHTS RESERVED.

| LOC | DIST | REVISIONS | | | |
|-----|------|---------------------------|---------|-----|------|
| P | LTR | DESCRIPTION | DATE | DWN | APVD |
| AD | 00 | | | | |
| | M2 | REVISED PER ECO-11-004587 | 11MAR11 | RK | HMR |



CONTACT IDENTIFICATION LETTER "D" (LOCATED IN THIS AREA)

HOUSING (SEE TABLE FOR PART NO.)

POSITION #1 INDICATOR

| | | | | | | |
|----------|---|------|-------|---------------------|------------|-------------------------------|
| 11 | 2 | 2.59 | 1.295 | 1-103653-1 | 12 | 6-103945-1 |
| 11 | 2 | 2.39 | 1.195 | 1-103653-0 | 11 | 6-103945-0 |
| 11 | 2 | 2.19 | 1.095 | 103653-9 | 10 | 5-103945-9 |
| 11 | 2 | 1.99 | .995 | 103653-8 | 9 | 5-103945-8 |
| 11 | 2 | 1.79 | .895 | 103653-7 | 8 | 5-103945-7 |
| 11 | 3 | 2.39 | .795 | 103653-6 | 7 | 5-103945-6 |
| 11 | 2 | 1.39 | .695 | 103653-5 | 6 | 5-103945-5 |
| 11 | 4 | 2.38 | .595 | 103653-4 | 5 | 5-103945-4 |
| 11 | 4 | 1.98 | .495 | 103653-3 | 4 | 5-103945-3 |
| 11 | 5 | 1.98 | .395 | 103653-2 | 3 | 5-103945-2 |
| 11 | 8 | 2.36 | .295 | 103653-1 | 2 | 5-103945-1 |
| 10 | 4 | 1.98 | .495 | 103653-3 | 4 | 1-103945-7 |
| 10 | 5 | 1.98 | .395 | 103653-2 | 3 | 1-103945-6 |
| OBSOLETE | 9 | 2.19 | 1.095 | 103653-9 | 10 | 1-103945-5 |
| 10 | 2 | 1.39 | .695 | 103653-5 | 6 | 1-103945-4 |
| OBSOLETE | 9 | 4 | 2.38 | 103653-4 | 5 | 1-103945-3 |
| 10 | 8 | 2.36 | .295 | 103653-1 | 2 | 1-103945-2 |
| 8 | 2 | 2.59 | 1.295 | 1-103653-1 | 12 | 1-103945-1 |
| 8 | 2 | 2.39 | 1.195 | 1-103653-0 | 11 | 1-103945-0 |
| 8 | 2 | 2.19 | 1.095 | 103653-9 | 10 | 103945-9 |
| 8 | 2 | 1.99 | .995 | 103653-8 | 9 | 103945-8 |
| 8 | 2 | 1.79 | .895 | 103653-7 | 8 | 103945-7 |
| 8 | 3 | 2.39 | .795 | 103653-6 | 7 | 103945-6 |
| 8 | 2 | 1.39 | .695 | 103653-5 | 6 | 103945-5 |
| 8 | 4 | 2.38 | .595 | 103653-4 | 5 | 103945-4 |
| 8 | 4 | 1.98 | .495 | 103653-3 | 4 | 103945-3 |
| 8 | 5 | 1.98 | .395 | 103653-2 | 3 | 103945-2 |
| 8 | 8 | 2.36 | .295 | 103653-1 | 2 | 103945-1 |
| PLATING | 6 | B | A | HOUSING PART NUMBER | NO OF POSN | ASSEMBLY POSN NUMBER ON STRIP |

12 SUPERSEDED BY 5-103945-8

- 1 CONTACTS ARE LATCHED INTO THE PRELOAD WINDOWS
- 2 USE WITH #22-#26 AWG WIRE SIZE, .054/.030 INSULATION DIAMETER, .015 MAXIMUM INSULATION THICKNESS
- 3 THE DIMENSION APPLIES WITH THE FORWARD PRELOAD STOP IN CONTACT WITH THE HOUSING SURFACE
- 4 POINT OF MEASUREMENT FOR PLATING THICKNESS
- 5 FOR INDIVIDUAL ASSEMBLIES SEE PART NUMBER 103660
- 6 ASSEMBLIES ARE JOINED BY THE CARRIER STRIP. ORDER QUANTITY REFLECTS TOTAL NUMBER OF INDIVIDUAL ASSEMBLIES REQUIRED. SEE TABLE FOR NUMBER OF ASSEMBLIES PER STRIP.
- 7 MATERIAL- HOUSING: FLAME RETARDANT THERMOPLASTIC, COLOR: BLACK PINS: PHOS. BRONZE
- 8 FINISH- PINS: .000015 GOLD IN THE CONTACT AREA, .000050-.000100 BRIGHT TIN-LEAD ON THE TERMINATION AREA, OVER .000050 NICKEL.
- 9 FINISH- PINS: .000015 GOLD IN THE CONTACT AREA, .000050-.000100 BRIGHT TIN ON THE TERMINATION AREA, OVER .000050 NICKEL.
- 10 PRELIMINARY PART - NOT RELEASED FOR PRODUCTION.
- 11 FINISH- PINS: .000015 GOLD IN THE CONTACT AREA, .000050-.000100 MATTE TIN ON THE TERMINATION AREA, OVER .000050 NICKEL.
- 12 OBSOLETE PARTS: OBSOLETE CIS STREAMLINING PER D.RENAUD/D.SINISI

THIS DRAWING IS A CONTROLLED DOCUMENT.

DWN R.BROWN 26JUL00
 CHK K.WRIGHT 26JUL00
 APVD K.WRIGHT 26JUL00

TE Connectivity

SHROUDED PIN ASSY, AMPMOW MTE, SINGLE ROW, .100 CL, POLARIZED, W/ LATCH WINDOWS, FOR #22-#26 AWG WIRE SIZE, STRIP FORM

108-25034
 114-25026

SIZE A2 CAGE CODE 00779 DRAWING NO. C=103945 RESTRICTED TO -

WEIGHT - SCALE 4:1 SHEET 1 of 1 REV M2

CUSTOMER DRAWING