



Chipsmall Limited consists of a professional team with an average of over 10 year of expertise in the distribution of electronic components. Based in Hongkong, we have already established firm and mutual-benefit business relationships with customers from,Europe,America and south Asia,supplying obsolete and hard-to-find components to meet their specific needs.

With the principle of “Quality Parts,Customers Priority,Honest Operation,and Considerate Service”,our business mainly focus on the distribution of electronic components. Line cards we deal with include Microchip,ALPS,ROHM,Xilinx,Pulse,ON,Everlight and Freescale. Main products comprise IC,Modules,Potentiometer,IC Socket,Relay,Connector.Our parts cover such applications as commercial,industrial, and automotives areas.

We are looking forward to setting up business relationship with you and hope to provide you with the best service and solution. Let us make a better world for our industry!



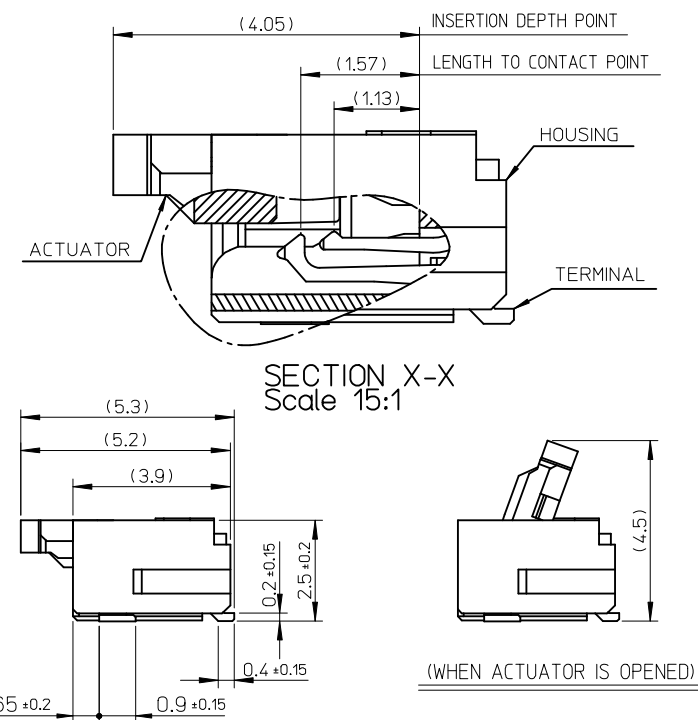
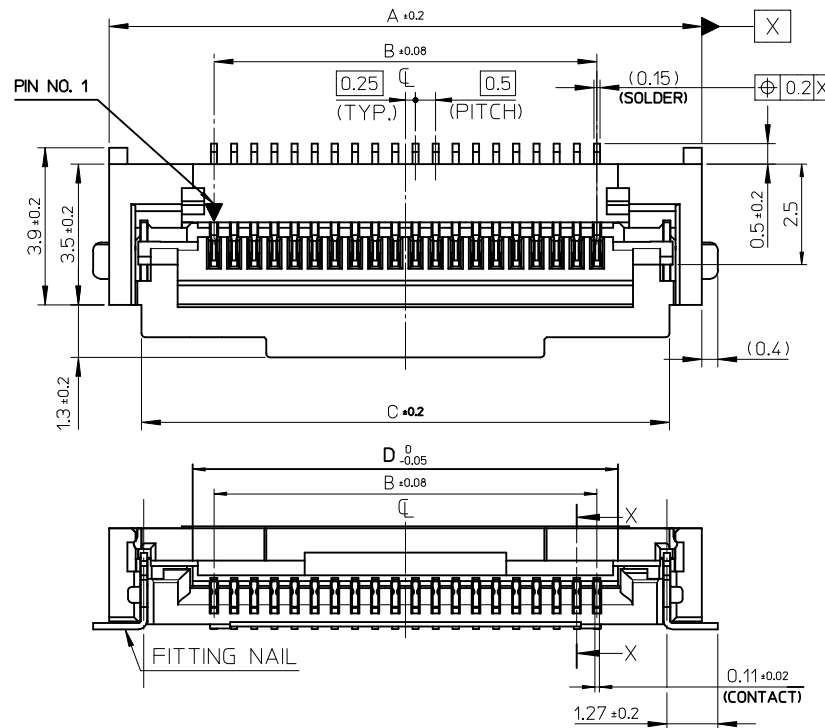
Contact us

Tel: +86-755-8981 8866 Fax: +86-755-8427 6832

Email & Skype: info@chipsmall.com Web: www.chipsmall.com

Address: A1208, Overseas Decoration Building, #122 Zhenhua RD., Futian, Shenzhen, China





NOTES

1. MATERIAL
 - HOUSING LIQUID CRYSTAL POLYMER
GLASS FILLED,UL94V-0(BEIGE)
 - ACTUATOR PPS GLASS FILLED, UL94V-0(BLACK)
(t=0.15)
 - TERMINAL PHOSPHOR BRONZE
(t=0.15)
 - FITTING NAIL PHOSPHOR BRONZE
2. PLATING
 - TERMINAL
 - CONTACT AREA : SEPARATED GOLD PLATING
(0.05 MICROMETER MINIMUM)
 - SOLDER TAIL AREA : SEPARATED GOLD PLATING
 - UNDERPLATE : NICKEL OVERALL
(1.0 MICROMETER MINIMUM)
 - FITTING NAIL
 - TIN PLATING (1.0 MICROMETER MIN.)
 - UNDER PLATING : NICKEL PLATING
(1.0 MICROMETER MIN.)
3. IN THE PACKAGE, ACTUATOR OF PART 104060-**10 SHOULD BE CLOSED.
4. FITTING NAIL FOR PREVENTION OF PEELING OF P.C.B. PATTERN.
5. R0.3 MUST NOT BE OVERLAPPED TO PATTERN OF FPC/FFC.
6. N: CIRCUIT.
7. ELV AND RoHS COMPLIANT
8. TAILS AND NAILS COPLANALITY TO BE 0.1mm MAX.

10.5	13.1	9.5	14.7	104060-2017	20
D	C	B	A	ORDER No.	CIRCUIT

REVISED EC NO: KOR2013-0042 DRWN:HJJEONG 2013/05/30 CHKD: APPR:YSKIM02 2013/05/30	QUALITY SYMBOLS	GENERAL TOLERANCES (UNLESS SPECIFIED)	DIMENSION STYLE	SCALE	DESIGN UNITS	THIRD ANGLE PROJECTION																
	$\nabla=0$ $\square=0$	<table border="1"> <tr> <th></th> <th>mm</th> <th>INCH</th> </tr> <tr> <td>4 PLACES</td> <td>± ---</td> <td>± ---</td> </tr> <tr> <td>3 PLACES</td> <td>± ---</td> <td>± ---</td> </tr> <tr> <td>2 PLACES</td> <td>± ---</td> <td>± ---</td> </tr> <tr> <td>1 PLACE</td> <td>± 0.3</td> <td>± ---</td> </tr> </table>		mm	INCH	4 PLACES	± ---	± ---	3 PLACES	± ---	± ---	2 PLACES	± ---	± ---	1 PLACE	± 0.3	± ---	MM ONLY	8:1	METRIC		
		mm	INCH																			
	4 PLACES	± ---	± ---																			
3 PLACES	± ---	± ---																				
2 PLACES	± ---	± ---																				
1 PLACE	± 0.3	± ---																				
<table border="1"> <tr> <td>DRAWN BY</td> <td>DATE</td> <td>TITLE</td> </tr> <tr> <td>YR.KIM</td> <td>2009/06/26</td> <td>0.5 FFC E/O DUAL CONTACT HOUSING ASS'Y</td> </tr> <tr> <td>CHECKED BY</td> <td>DATE</td> <td></td> </tr> <tr> <td>KS.KIM</td> <td>2009/06/26</td> <td></td> </tr> <tr> <td>APPROVED BY</td> <td>DATE</td> <td></td> </tr> <tr> <td>YS00.KIM</td> <td>2009/06/26</td> <td></td> </tr> </table>	DRAWN BY	DATE	TITLE	YR.KIM	2009/06/26	0.5 FFC E/O DUAL CONTACT HOUSING ASS'Y	CHECKED BY	DATE		KS.KIM	2009/06/26		APPROVED BY	DATE		YS00.KIM	2009/06/26		ANGULAR ± 1 °	SEE TABLE	MOLEX INCORPORATED DOCUMENT NO. SD-104060-002	SHEET NO. 1 OF 3
DRAWN BY	DATE	TITLE																				
YR.KIM	2009/06/26	0.5 FFC E/O DUAL CONTACT HOUSING ASS'Y																				
CHECKED BY	DATE																					
KS.KIM	2009/06/26																					
APPROVED BY	DATE																					
YS00.KIM	2009/06/26																					
DRAFT WHERE APPLICABLE MUST REMAIN WITHIN DIMENSIONS	SIZE A3	THIS DRAWING CONTAINS INFORMATION THAT IS PROPRIETARY TO MOLEX INCORPORATED AND SHOULD NOT BE USED WITHOUT WRITTEN PERMISSION																				

10 9 8 7 6 5 4 3 2 1

F

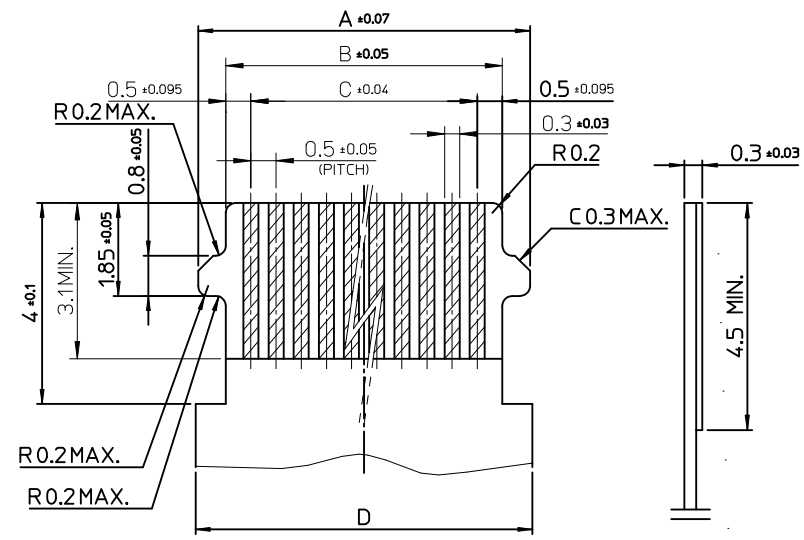
E

D

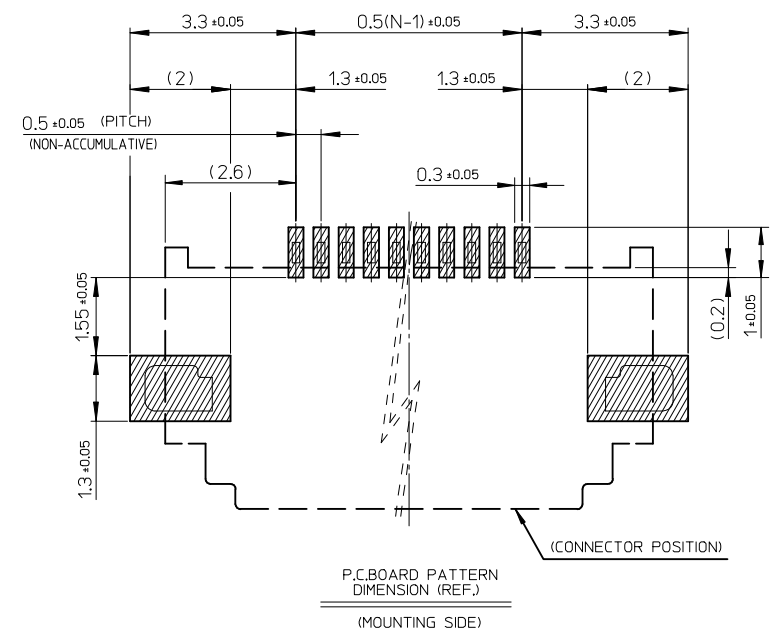
C

B

A



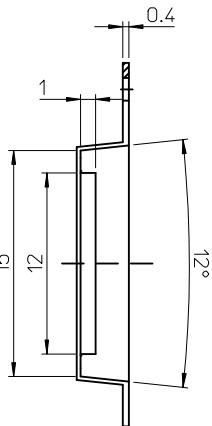
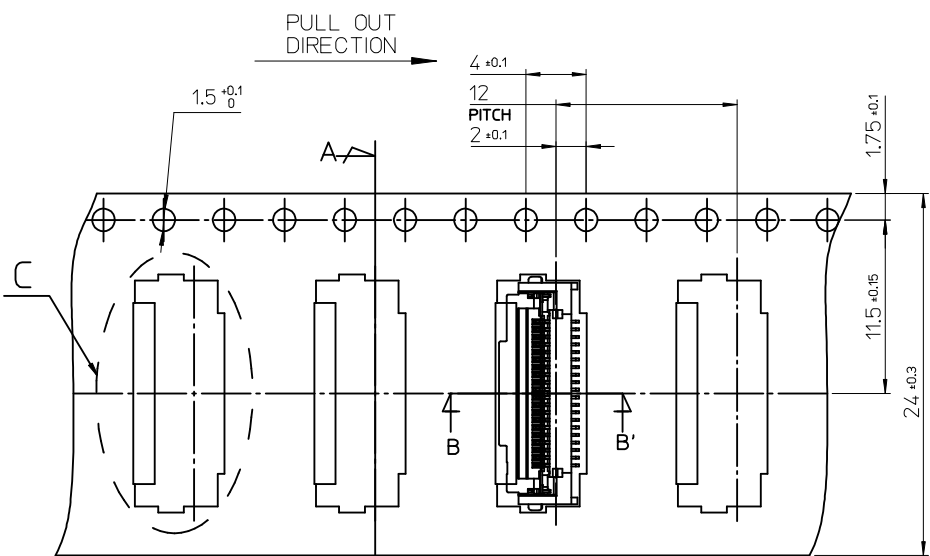
APPLICABLE FPC/FFC
RECOMMENDED DIMENSION



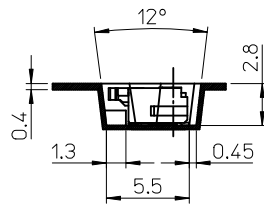
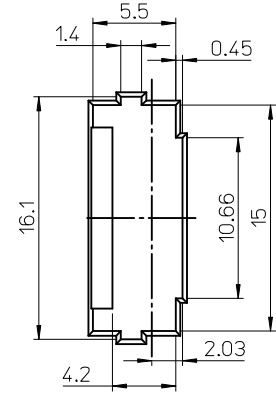
12.3	9.5	10.5	12.2	20
D	C	B	A	CIRCUIT

REVISED EC NO: KOR2013-0042 DRWN: HJEONG 2013/05/30 CHKD: APPR: YSK IM02 2013/05/30 REV DESCRIPTION	QUALITY SYMBOLS	GENERAL TOLERANCES (UNLESS SPECIFIED)	DIMENSION STYLE	SCALE	DESIGN UNITS	THIRD ANGLE PROJECTION																			
	$\blacktriangledown = 0$ $\triangleleft = 0$	<table border="1"> <tr> <td></td> <td>mm</td> <td>INCH</td> </tr> <tr> <td>4 PLACES</td> <td>$\pm \text{---}$</td> <td>$\pm \text{---}$</td> </tr> <tr> <td>3 PLACES</td> <td>$\pm \text{---}$</td> <td>$\pm \text{---}$</td> </tr> <tr> <td>2 PLACES</td> <td>$\pm \text{---}$</td> <td>$\pm \text{---}$</td> </tr> <tr> <td>1 PLACE</td> <td>± 0.3</td> <td>$\pm \text{---}$</td> </tr> </table>		mm	INCH	4 PLACES	$\pm \text{---}$	$\pm \text{---}$	3 PLACES	$\pm \text{---}$	$\pm \text{---}$	2 PLACES	$\pm \text{---}$	$\pm \text{---}$	1 PLACE	± 0.3	$\pm \text{---}$	MM ONLY	10:1	METRIC					
		mm	INCH																						
	4 PLACES	$\pm \text{---}$	$\pm \text{---}$																						
3 PLACES	$\pm \text{---}$	$\pm \text{---}$																							
2 PLACES	$\pm \text{---}$	$\pm \text{---}$																							
1 PLACE	± 0.3	$\pm \text{---}$																							
<table border="1"> <tr> <td>DRAWN BY</td> <td>DATE</td> <td>TITLE</td> </tr> <tr> <td>YR.KIM</td> <td>2009/06/26</td> <td>0.5 FFC E/O DUAL CONTACT HOUSING ASS'Y</td> </tr> <tr> <td>CHECKED BY</td> <td>DATE</td> <td></td> </tr> <tr> <td>KS.KIM</td> <td>2009/06/26</td> <td></td> </tr> <tr> <td>APPROVED BY</td> <td>DATE</td> <td></td> </tr> <tr> <td>YSOO.KIM</td> <td>2009/06/26</td> <td></td> </tr> </table>	DRAWN BY	DATE	TITLE	YR.KIM	2009/06/26	0.5 FFC E/O DUAL CONTACT HOUSING ASS'Y	CHECKED BY	DATE		KS.KIM	2009/06/26		APPROVED BY	DATE		YSOO.KIM	2009/06/26		<table border="1"> <tr> <td>MATERIAL NO.</td> <td>DOCUMENT NO.</td> <td>SHEET NO.</td> </tr> <tr> <td>SEE TABLE</td> <td>SD-104060-002</td> <td>2 OF 3</td> </tr> </table>	MATERIAL NO.	DOCUMENT NO.	SHEET NO.	SEE TABLE	SD-104060-002	2 OF 3
DRAWN BY	DATE	TITLE																							
YR.KIM	2009/06/26	0.5 FFC E/O DUAL CONTACT HOUSING ASS'Y																							
CHECKED BY	DATE																								
KS.KIM	2009/06/26																								
APPROVED BY	DATE																								
YSOO.KIM	2009/06/26																								
MATERIAL NO.	DOCUMENT NO.	SHEET NO.																							
SEE TABLE	SD-104060-002	2 OF 3																							
DRAFT WHERE APPLICABLE MUST REMAIN WITHIN DIMENSIONS	THIS DRAWING CONTAINS INFORMATION THAT IS PROPRIETARY TO MOLEX INCORPORATED AND SHOULD NOT BE USED WITHOUT WRITTEN PERMISSION																								

9 8 7 6 5 4 3 2 1



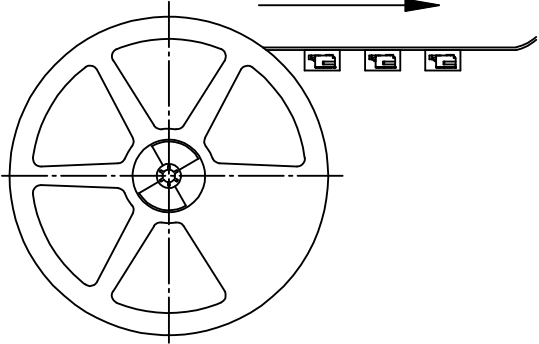
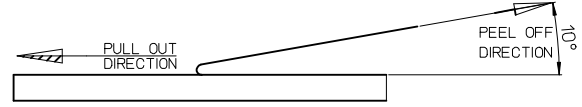
SECTION A-A'



SECTION B-B'
(Scale 3/1)

NOTES

1. NUMBER OF CONNECTORS : 2,400PCS/REEL
2. LEAD TAPE LENGTH
3. FOR DIMENSIONS OF PRODUCT, REFER TO SD-104060-001.
4. MATERIAL
 CARRIER TAPE : POLYETHYLENE TEREPHTHALATE
 TOP TAPE : POLYETHYLENE TEREPHTHALATE , POLYETHYLENE
 REEL : POLYSTYRENE<RECYCLE MATERIAL CONTAINED>
5. ELV AND RoHS COMPLIANT
6. PEELING OFF FORCE OF COVER TAPE : 0.1N~0.59N(10.2GF~60GF)
 (PEELING DIRECTION AS SHOW IN FOLLOW FIG.)
 PEELING OFF SPEED : 300mm/Min.(Ref.)



24	104060-2017	20
CARRIER TAPE WIDTH	ORDER NO.	CIRCUIT

REVISED EC NO: KOR2013-0042 DRW:NHJEONG 2013/05/30 CHKD: APPR:YSKIM02 2013/05/30 REV DESCRIPTION	QUALITY SYMBOLS	GENERAL TOLERANCES (UNLESS SPECIFIED)	DIMENSION STYLE	SCALE	DESIGN UNITS	THIRD ANGLE PROJECTION	
	▽=0 ◻=0	mm INCH 4 PLACES ± --- ± --- 3 PLACES ± --- ± --- 2 PLACES ± --- ± --- 1 PLACE ± 0.3 ± --- ANGULAR ± 1 °	MM ONLY	10:1	METRIC	DRAWN BY DATE YR.KIM 2009/06/26 CHECKED BY DATE KS.KIM 2009/06/26 APPROVED BY DATE YS00.KIM 2009/06/26 MATERIAL NO.	
		DRAFT WHERE APPLICABLE MUST REMAIN WITHIN DIMENSIONS	SEE TABLE	TITLE		0.5 FFC E/O DUAL CONTACT HOUSING ASS'Y MOLEX INCORPORATED DOCUMENT NO. SD-104060-002 SHEET NO. 3 OF 3	
				THIS DRAWING CONTAINS INFORMATION THAT IS PROPRIETARY TO MOLEX INCORPORATED AND SHOULD NOT BE USED WITHOUT WRITTEN PERMISSION			