



Chipsmall Limited consists of a professional team with an average of over 10 year of expertise in the distribution of electronic components. Based in Hongkong, we have already established firm and mutual-benefit business relationships with customers from,Europe,America and south Asia,supplying obsolete and hard-to-find components to meet their specific needs.

With the principle of “Quality Parts,Customers Priority,Honest Operation,and Considerate Service”,our business mainly focus on the distribution of electronic components. Line cards we deal with include Microchip,ALPS,ROHM,Xilinx,Pulse,ON,Everlight and Freescale. Main products comprise IC,Modules,Potentiometer,IC Socket,Relay,Connector.Our parts cover such applications as commercial,industrial, and automotives areas.

We are looking forward to setting up business relationship with you and hope to provide you with the best service and solution. Let us make a better world for our industry!



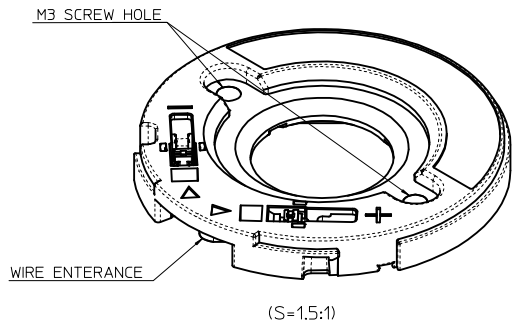
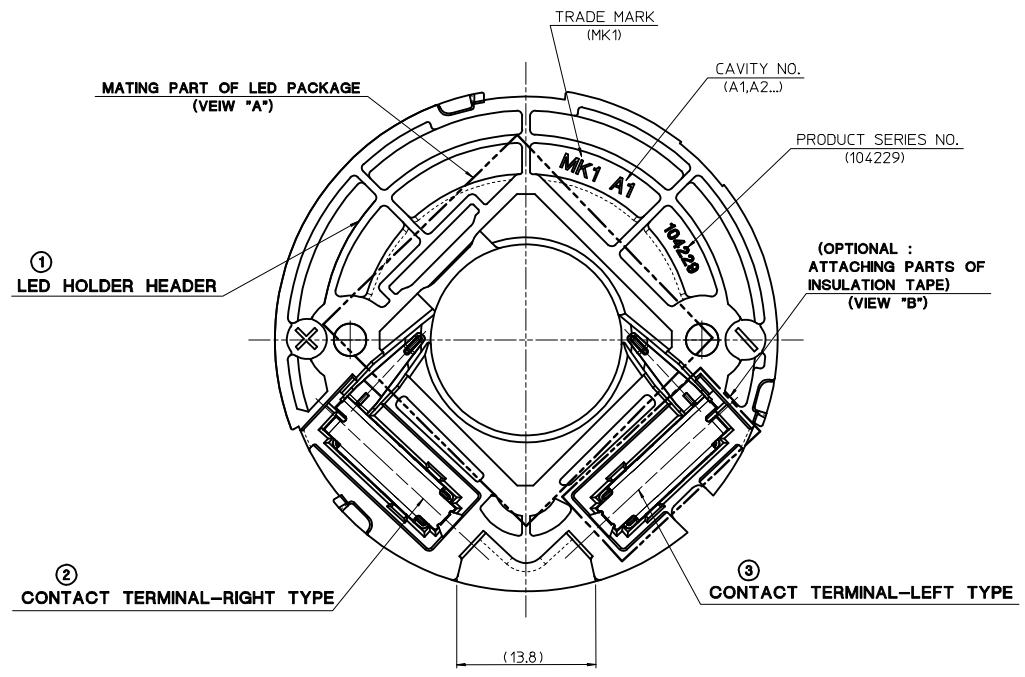
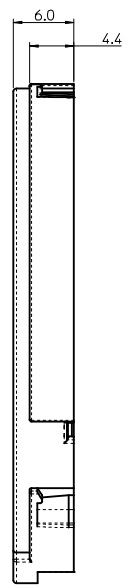
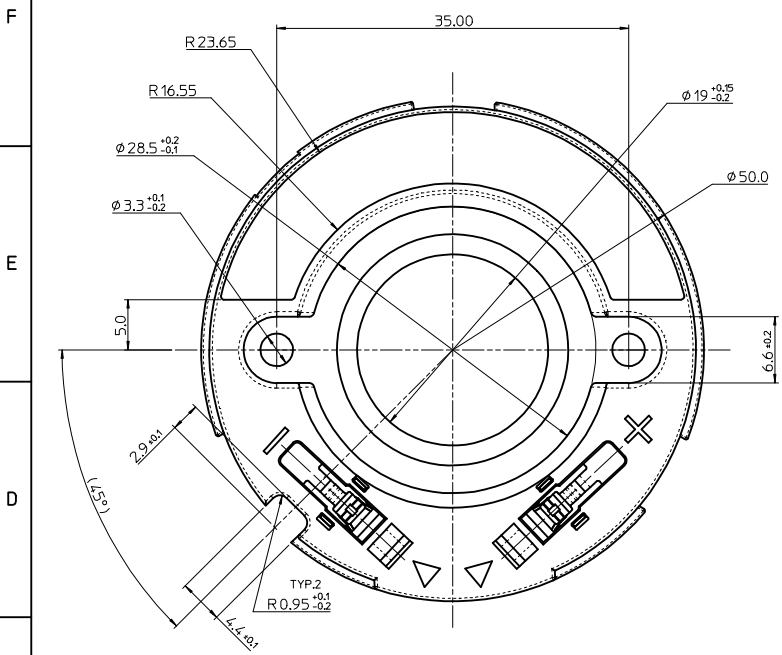
## Contact us

Tel: +86-755-8981 8866 Fax: +86-755-8427 6832

Email & Skype: info@chipsmall.com Web: www.chipsmall.com

Address: A1208, Overseas Decoration Building, #122 Zhenhua RD., Futian, Shenzhen, China

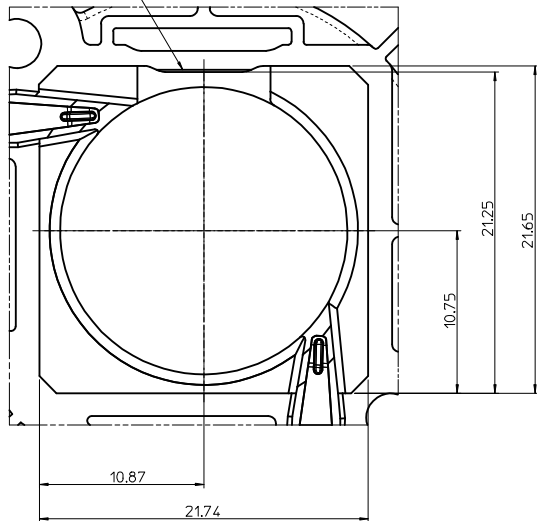




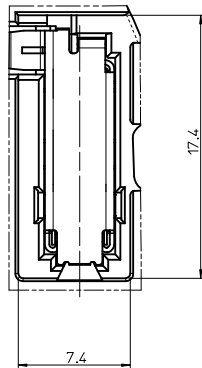
NOTES  
 1. MATERIAL  
 ① LED HOLDER HEADER : POLYESTER(PBT), GLASS FILLED, UL94V-0, HALOGEN FREE, COLOR OF NATURAL(WHITE)  
 ②③ CONTACT TERMINAL-LEFT,RIGHT : COPPER-ALLOY, 0.3mm THICKNESS  
 2. PLATING  
 ②③ CONTACT TERMINAL-LEFT,RIGHT : TIN PLATED  
 1.0μm MINIMUM TIN PLATING  
 3. APPLICABLE SOLID WIRE RANGE :  
 (OUTSIDE WIRE INSULATION : 2.1mm DIAMETER MAX.)  
 - SOLID WIRE : AWG#22 ~ #18  
 - STRAND WIRE : AWG#22,#20 (PRE TINNED IS RECOMMENDED)

RELEASED EC NO: KOR2015-0096 DRWN: SCHONG03 2015/03/25 CHKD: SHCHU 2015/03/25 APPR: YSKIM02 2015/03/30	QUALITY SYMBOLS ▽=0 ▽=0	GENERAL TOLERANCES (UNLESS SPECIFIED)		DIMENSION STYLE MM ONLY		SCALE 2:1	DESIGN UNITS METRIC	THIRD ANGLE PROJECTION		
			mm	INCH	DRAWN BY SCHONG03	DATE 2015/03/25	TITLE 19.0MM DIAMETER LED HOLDER			
		4 PLACES	± ---	± ---	CHECKED BY SHCHU	DATE 2015/03/25				
		3 PLACES	± ---	± ---	APPROVED BY YSKIM02	DATE 2015/03/30				
	2 PLACES	± 0.15	± ---	MATERIAL NO. 1042290210		DOCUMENT NO. SD-104229-001	SHEET NO. 1 OF 2			
	1 PLACE	± 0.25	± ---	DRAFT WHERE APPLICABLE MUST REMAIN WITHIN DIMENSIONS		THIS DRAWING CONTAINS INFORMATION THAT IS PROPRIETARY TO MOLEX INCORPORATED AND SHOULD NOT BE USED WITHOUT WRITTEN PERMISSION				
	0 PLACE	± ---	± ---	ANGULAR ± 1 °						

LED PACKAGE CLAMPING FEATURE

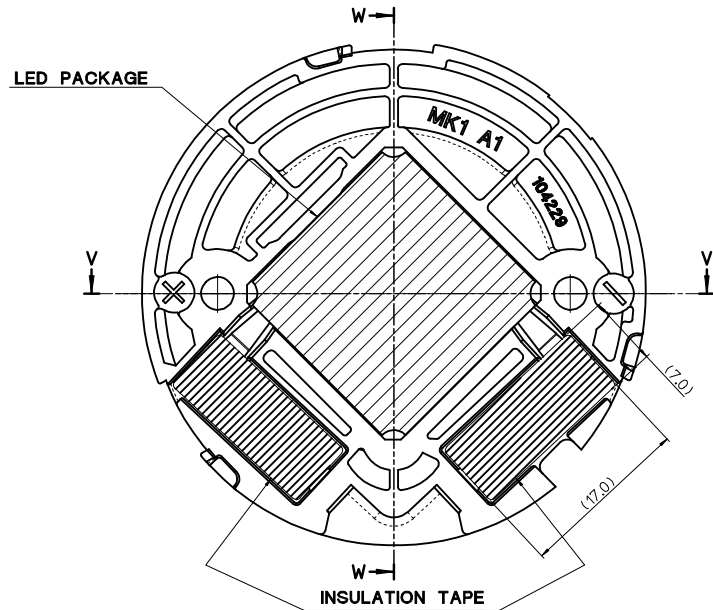


**DETAIL "A"**  
(Scale 3/1)

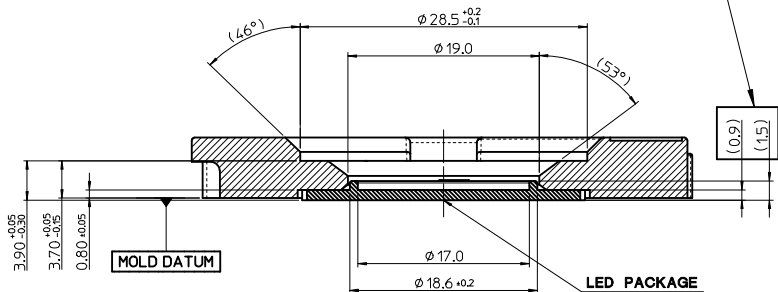


**DETAIL "B"**  
(Scale 3/1)

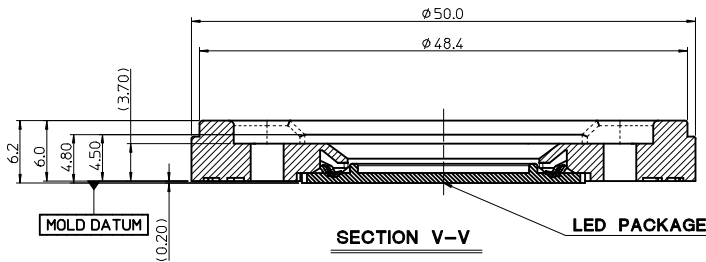
ILLUSTRATION OF HOLDER WITH LED PACKAGE ATTACHED  
BOTTOM VIEW (REFERENCE)



RECOMMENDED LED PACKAGE THICKNESS



**SECTION W-W**



**SECTION V-V**

RELEASED EC NO: KOR2015-0096 DRWN: SCHONG03 2015/03/25 CHKD: SHCHU 2015/03/25 APPR: YSK1M02 2015/03/30	QUALITY SYMBOLS	GENERAL TOLERANCES (UNLESS SPECIFIED)	DIMENSION STYLE	SCALE	DESIGN UNITS	THIRD ANGLE PROJECTION
	▽=0 □=0	mm    INCH 4 PLACES ± --- ± --- 3 PLACES ± --- ± --- 2 PLACES ± 0.15 ± --- 1 PLACE ± 0.25 ± --- 0 PLACE ± --- ± ---	MM ONLY	2/1	METRIC	
	ANGULAR ± 1 ° DRAFT WHERE APPLICABLE MUST REMAIN WITHIN DIMENSIONS	DRAWN BY: SCHONG03 CHECKED BY: SHCHU APPROVED BY: YSK1M02 DATE: 2015/03/25 DATE: 2015/03/25 DATE: 2015/03/30	TITLE	19.0MM DIAMETER LED HOLDER		
	MATERIAL NO. 1042290210 DOCUMENT NO. SD-104229-001 SHEET NO. 2 OF 2					