



Chipsmall Limited consists of a professional team with an average of over 10 year of expertise in the distribution of electronic components. Based in Hongkong, we have already established firm and mutual-benefit business relationships with customers from,Europe,America and south Asia,supplying obsolete and hard-to-find components to meet their specific needs.

With the principle of “Quality Parts,Customers Priority,Honest Operation,and Considerate Service”,our business mainly focus on the distribution of electronic components. Line cards we deal with include Microchip,ALPS,ROHM,Xilinx,Pulse,ON,Everlight and Freescale. Main products comprise IC,Modules,Potentiometer,IC Socket,Relay,Connector.Our parts cover such applications as commercial,industrial, and automotives areas.

We are looking forward to setting up business relationship with you and hope to provide you with the best service and solution. Let us make a better world for our industry!



Contact us

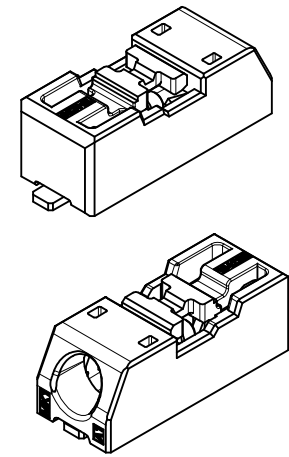
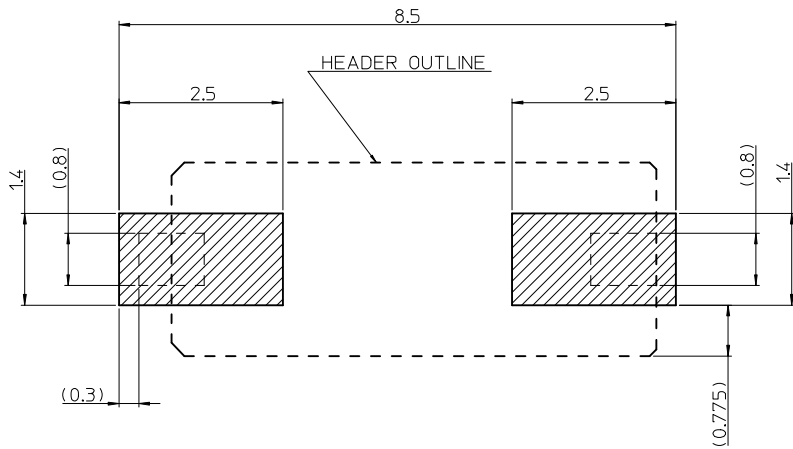
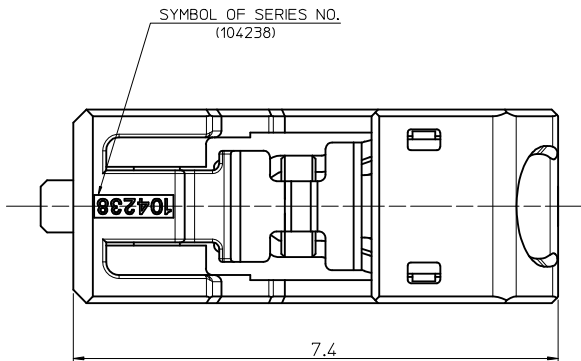
Tel: +86-755-8981 8866 Fax: +86-755-8427 6832

Email & Skype: info@chipsmall.com Web: www.chipsmall.com

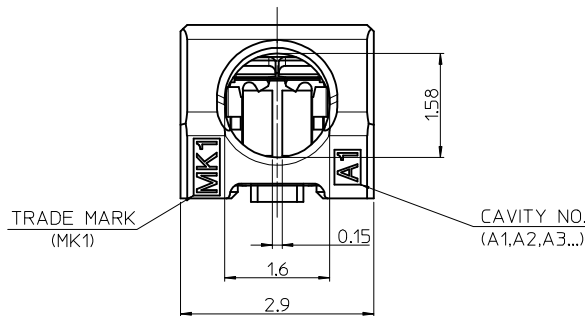
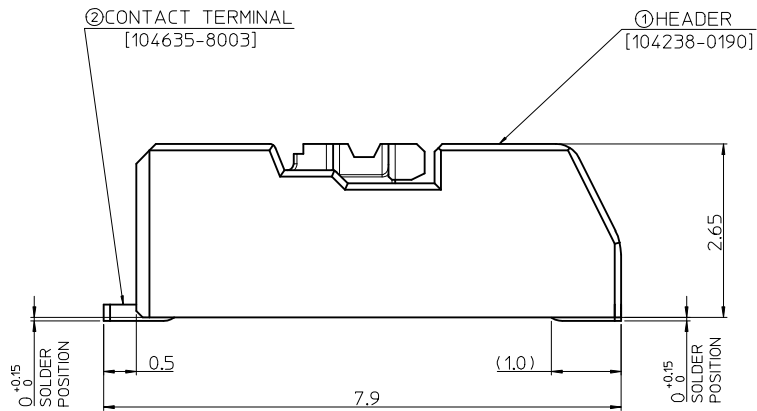
Address: A1208, Overseas Decoration Building, #122 Zhenhua RD., Futian, Shenzhen, China



10 9 8 7 6 5 4 3 2 1



RECOMMENDED PCB LAYOUT
[GENERAL TOLERANCE : ±0.05]

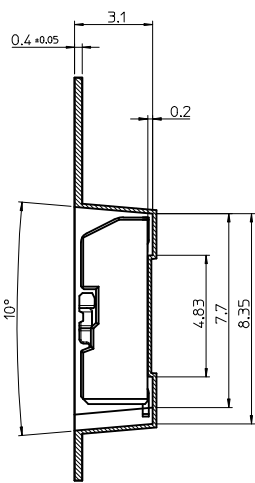
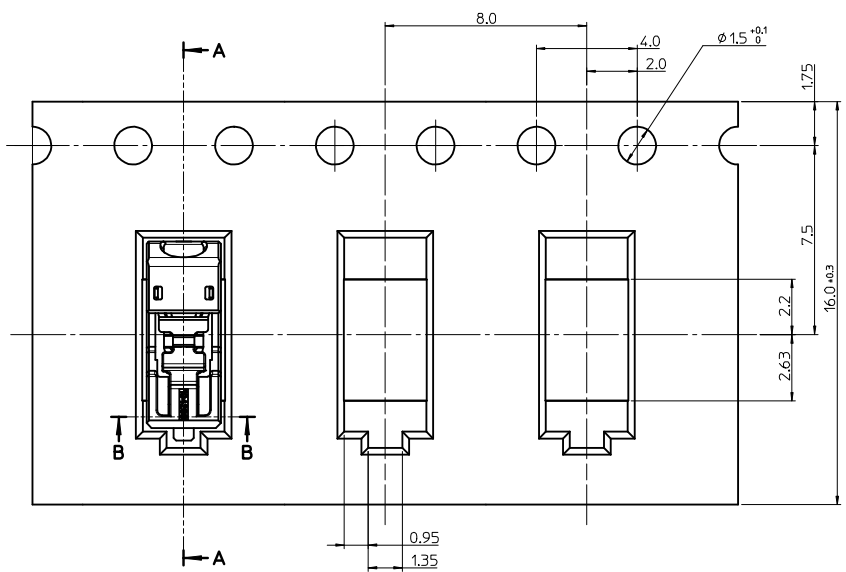


NOTE

- MATERIAL
 - ①- HEADER : LCP, GLASS FILLED, UL94V-0 HALOGEN FREE, COLOR OF NATURAL
 - ②- CONTACT TERMINAL : COPPER-ALLOY, 0.25mm THICKNESS
- PLATING
 - CONTACT TERMINAL : TIN -PLATED 0.84μm MINIMUM TIN PLATING
- PRODUCT SPECIFICATION : PS-104238-001
- PACKAGING SPECIFICATION : PK-104238-001
- COPLANALITY OF SOLDER TAILS (PEAK TEMP. : 260°C), BEFORE & AFTER REFLOW : 0.08 MAX.
- APPLICABLE SOLIDE WIRE RANGE : (OUTSIDE WIRE INSULATION : 1.48mm DIAMETER MAX.)
 - SOLID WIRE : AWG #26~#22

| | | | | | | | | | | |
|--|-------------------------------|---------------------------------------|-------------|---|---------------|---------------|--|------------------------|-----------|--|
| RELEASED EC NO: KOR2015-0096 DRWN: SCHONG03 2015/01/12 CHKD: SHCHU 2015/01/12 APPR: YSK1M02 2015/03/30 | QUALITY SYMBOLS ▽=0 ▽=0 | GENERAL TOLERANCES (UNLESS SPECIFIED) | | DIMENSION STYLE MM ONLY | | SCALE 13:1 | DESIGN UNITS METRIC | THIRD ANGLE PROJECTION | | |
| | | | mm | INCH | DRAWN BY | DATE | TITLE | | | |
| | | 4 PLACES | ± --- | ± --- | SCHONG03 | 2015/01/12 | MINI LITE TRAP CONNECTOR HEADER ASS'Y -1P | | | |
| | | 3 PLACES | ± --- | ± --- | CHECKED BY | DATE | | | | |
| | ± 0.15 | ± --- | SHCHU | 2015/01/12 | molex | | | | | |
| 2 PLACES | ± 0.20 | ± --- | APPROVED BY | DATE | | | | | | |
| | ± --- | ± --- | YSK1M02 | 2015/03/30 | MATERIAL NO. | | DOCUMENT NO. | | SHEET NO. | |
| | ANGULAR ± 3 ° | | 1042380110 | | SD-104238-001 | | 1 OF 1 | | | |
| DRAFT WHERE APPLICABLE MUST REMAIN WITHIN DIMENSIONS | | SIZE A3 | | THIS DRAWING CONTAINS INFORMATION THAT IS PROPRIETARY TO MOLEX INCORPORATED AND SHOULD NOT BE USED WITHOUT WRITTEN PERMISSION | | | | | | |

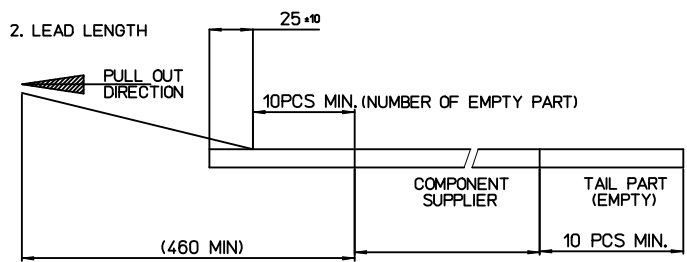
9 8 7 6 5 4 3 2 1



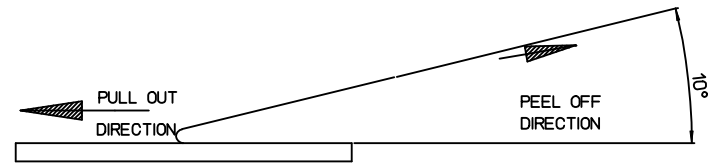
Section A-A

NOTES

- 1. QUANTITY OF CONNECTORS : 3,500 PCS/REEL
- 2. LEAD LENGTH



- 3. PEELING OFF FORCE OF COVER TAPE : 0.1N~0.59N(10.2GF~60GF)
(PEELING DIRECTION AS SHOW IN FOLLOW FIG.)
PEELING OFF SPEED : 300mm/Min.(Ref.)

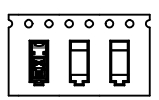


- 4. FLASH IN ANY PORTION SHOULD BE LESS THAN 0.20mm MAX.
- 5. UNLESS OTHERWISE SPECIFIED INNER R0.2 MAX

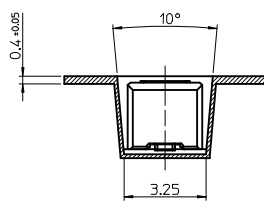
[TABLE]

| | | | | |
|--------------|-------------|---------|------------|-------------|
| 1042380110 | 104238-0110 | NATURAL | 16.0mm | 104238-9001 |
| MATERIAL NO. | NO. | COLOR | TAPE WIDTH | EMBOSS TAPE |
| | CONNECTOR | | | |

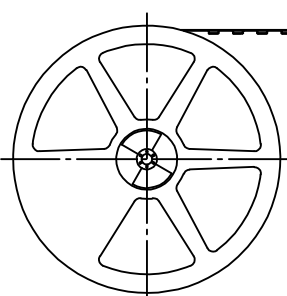
PULL OUT DIRECTION →



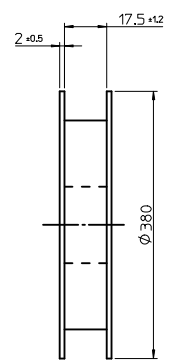
PULL OUT DIRECTION →



Section B-B



PLASTIC BOBBIN



| | | | | | | | | | |
|---|---------------------|--|----------------------|--|--------------------|---|--------------------------------------|----------------------------|--|
| RELEASED EC NO: KOR2015-0074 DRWN: SCHONG03 2014/12/10 CHKD: SHCHU 2014/12/10 APPR: YSK1M02 2014/12/11 | QUALITY SYMBOLS | GENERAL TOLERANCES (UNLESS SPECIFIED) | | DIMENSION STYLE MM ONLY | | SCALE 5:1 | DESIGN UNITS METRIC | THIRD ANGLE PROJECTION | |
| | | 4 PLACES ± --- ± --- | 3 PLACES ± --- ± --- | DRAWN BY SCHONG03 | DATE 2014/12/10 | TITLE MINI S-POKE CONN. -1P MINI LITE-TRAP CONN.1KCT EMBOSSED PACKAGE | | | |
| | | 2 PLACES ± 0.15 ± --- | 1 PLACE ± 0.20 ± --- | CHECKED BY SHCHU | DATE 2014/12/10 | | | | |
| | | 0 PLACE ± --- ± --- | ANGULAR ± 1 ° | APPROVED BY YSK1M02 | DATE 2014/12/11 | MATERIAL NO. 1042380110 | DOCUMENT NO. SD-104238-002 | SHEET NO. 1 OF 1 | |
| A | REV | DRAFT WHERE APPLICABLE MUST REMAIN WITHIN DIMENSIONS | | THIS DRAWING CONTAINS INFORMATION THAT IS PROPRIETARY TO MOLEX INCORPORATED AND SHOULD NOT BE USED WITHOUT WRITTEN PERMISSION | | | | | |