



Chipsmall Limited consists of a professional team with an average of over 10 year of expertise in the distribution of electronic components. Based in Hongkong, we have already established firm and mutual-benefit business relationships with customers from,Europe,America and south Asia,supplying obsolete and hard-to-find components to meet their specific needs.

With the principle of “Quality Parts,Customers Priority,Honest Operation,and Considerate Service”,our business mainly focus on the distribution of electronic components. Line cards we deal with include Microchip,ALPS,ROHM,Xilinx,Pulse,ON,Everlight and Freescale. Main products comprise IC,Modules,Potentiometer,IC Socket,Relay,Connector.Our parts cover such applications as commercial,industrial, and automotives areas.

We are looking forward to setting up business relationship with you and hope to provide you with the best service and solution. Let us make a better world for our industry!



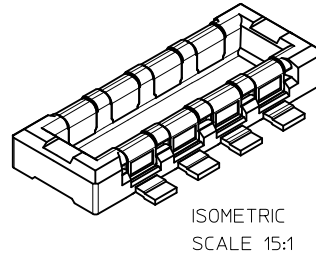
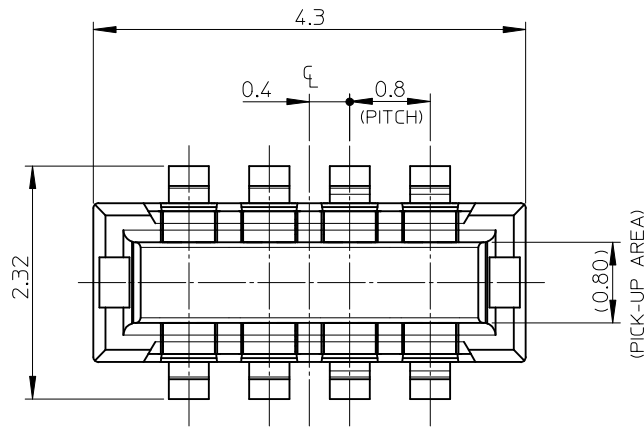
Contact us

Tel: +86-755-8981 8866 Fax: +86-755-8427 6832

Email & Skype: info@chipsmall.com Web: www.chipsmall.com

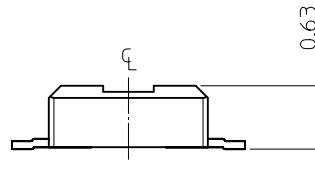
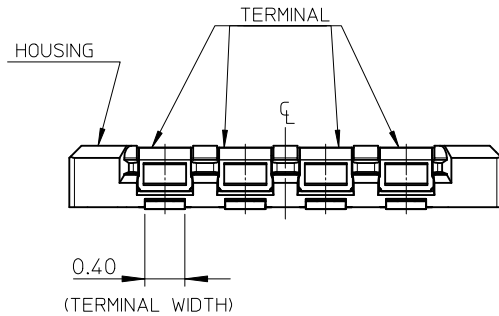
Address: A1208, Overseas Decoration Building, #122 Zhenhua RD., Futian, Shenzhen, China





NOTES

1. MATERIAL
HOUSING: LIQUID CRYSTAL POLYMER UL94V-0 (COLOR: BLACK)
TERMINAL FOR POWER OR SIGNAL CIRCUIT : COPPER ALLOY
2. PLATING
TERMINAL FOR POWER OR SIGNAL CIRCUIT
GOLD
UNDER PLATING : NICKEL
* DIVIDE INTO PARTS THE GOLD PLATING OF THE CONTACT AND THE TAIL PART BY THE NICKEL PLATING.
3. MATE WITH : 104249 SERIES.
4. TAIL COPLANARITY TO BE 0.08 MAXIMUM.
5. ELV and RoHS COMPLIANT.



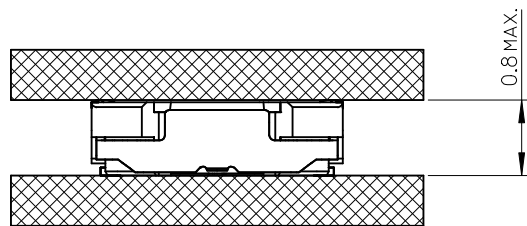
104250-0820	○	-	8
EMBOSSD TAPE PACKAGE	MASS PRODUCTION	LOW VOL. TOOL	CIRCUIT
ORDER NO.	SAMPLE PREPARATION		

CONNECTOR SERIES No. : 104250

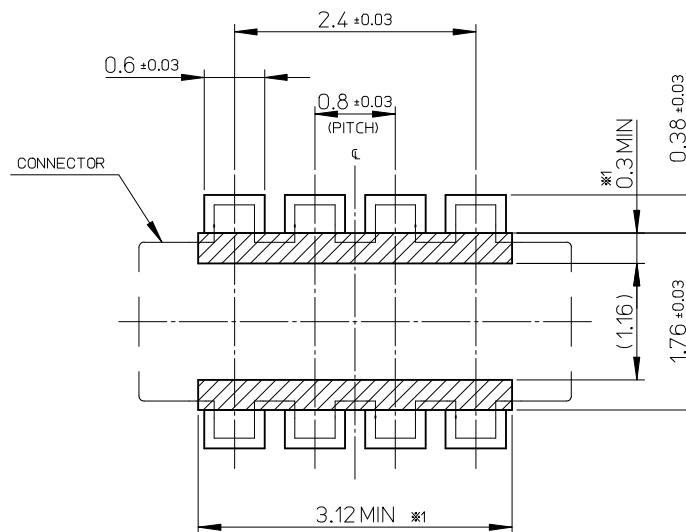
REVISED EC NO: KOR2016-0025 DRWN: JHCHANG 2015/09/17 CHKD: APPR: YSK1M02 2015/09/24	QUALITY SYMBOLS	GENERAL TOLERANCES (UNLESS SPECIFIED)	DIMENSION STYLE	SCALE	DESIGN UNITS	THIRD ANGLE PROJECTION
	$F_A=0$ $F_B=0$ $F_C=0$	mm INCH 4 PLACES ± --- ± --- 3 PLACES ± 0.1 ± --- 2 PLACES ± 0.15 ± --- 1 PLACE ± 0.2 ± --- 0 PLACE ± --- ± ---	MM ONLY	20:1	METRIC	○ □ THIRD ANGLE PROJECTION
		ANGULAR ± 1 °	DRAWN BY	DATE	TITLE	
		DRAFT WHERE APPLICABLE MUST REMAIN WITHIN DIMENSIONS	JHCHANG	2015/03/06	0.8 BB CONN H=0.75 BATTERY PLUG OVERMOLD (ONLY POWER TER'L VER)	
			CHECKED BY	DATE	molex SD-104250-001	

SEE CHART

THIS DRAWING CONTAINS INFORMATION THAT IS PROPRIETARY TO MOLEX INCORPORATED AND SHOULD NOT BE USED WITHOUT WRITTEN PERMISSION



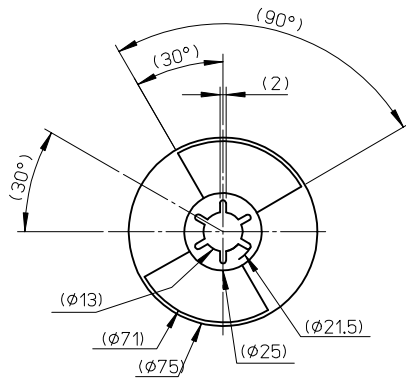
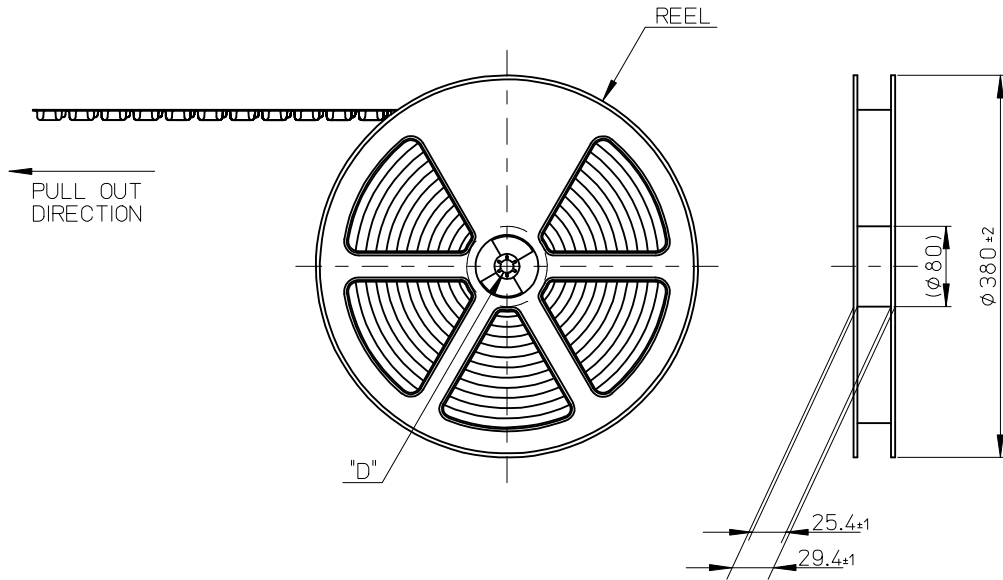
MATED CONDITION



RECOMMENDED P.W.BOARD PATTERN LAYOUT (FOR REFERENCE)
 RECOMMENDED THICKNESS OF METAL MASK: $t=0.1\text{mm}$
 RECOMMENDED OPEN APERTURE RATIO OF METAL MASK:70%

※1
 PROHIBITED AREA OF PATTERN WIRING AND SOLDER.
 (FOR EACH AREA THE WIRING CAN NOT BE AVAILABLE.
 AND COVERED WITH A FILM KEEP SOLDER OUT)

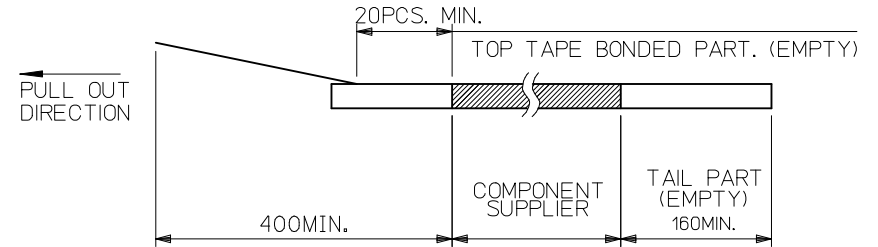
REVISED EC NO: KOR2016-0025 DRWN: JHCHANG 2015/09/17 CHKD: APPR: YSKIM02 2015/09/24	QUALITY SYMBOLS	GENERAL TOLERANCES (UNLESS SPECIFIED)	DIMENSION STYLE	SCALE	DESIGN UNITS	THIRD ANGLE PROJECTION
	▽F=0	mm INCH	MM ONLY	20:1	METRIC	
	▽F=0	4 PLACES ± --- ± ---	DRAWN BY DATE	TITLE		
	▽F=0	3 PLACES ± 0.1 ± ---	JHCHANG 2015/03/06	0.8 BB CONN H=0.75 BATTERY PLUG OVERMOLD (ONLY POWER TER'L VER)		
		2 PLACES ± 0.15 ± ---	CHECKED BY DATE	molex		
		1 PLACE ± 0.2 ± ---	KSKIM 2015/06/08	SD-104250-001		
		0 PLACE ± --- ± ---	APPROVED BY DATE	SHEET NO.		
		ANGULAR ± 1 °	YSKIM02 2015/06/18	2 OF 4		
		DRAFT WHERE APPLICABLE MUST REMAIN WITHIN DIMENSIONS	MATERIAL NO.	DOCUMENT NO.		
			SEE SHEET1	THIS DRAWING CONTAINS INFORMATION THAT IS PROPRIETARY TO MOLEX INCORPORATED AND SHOULD NOT BE USED WITHOUT WRITTEN PERMISSION		



DETAIL "D"

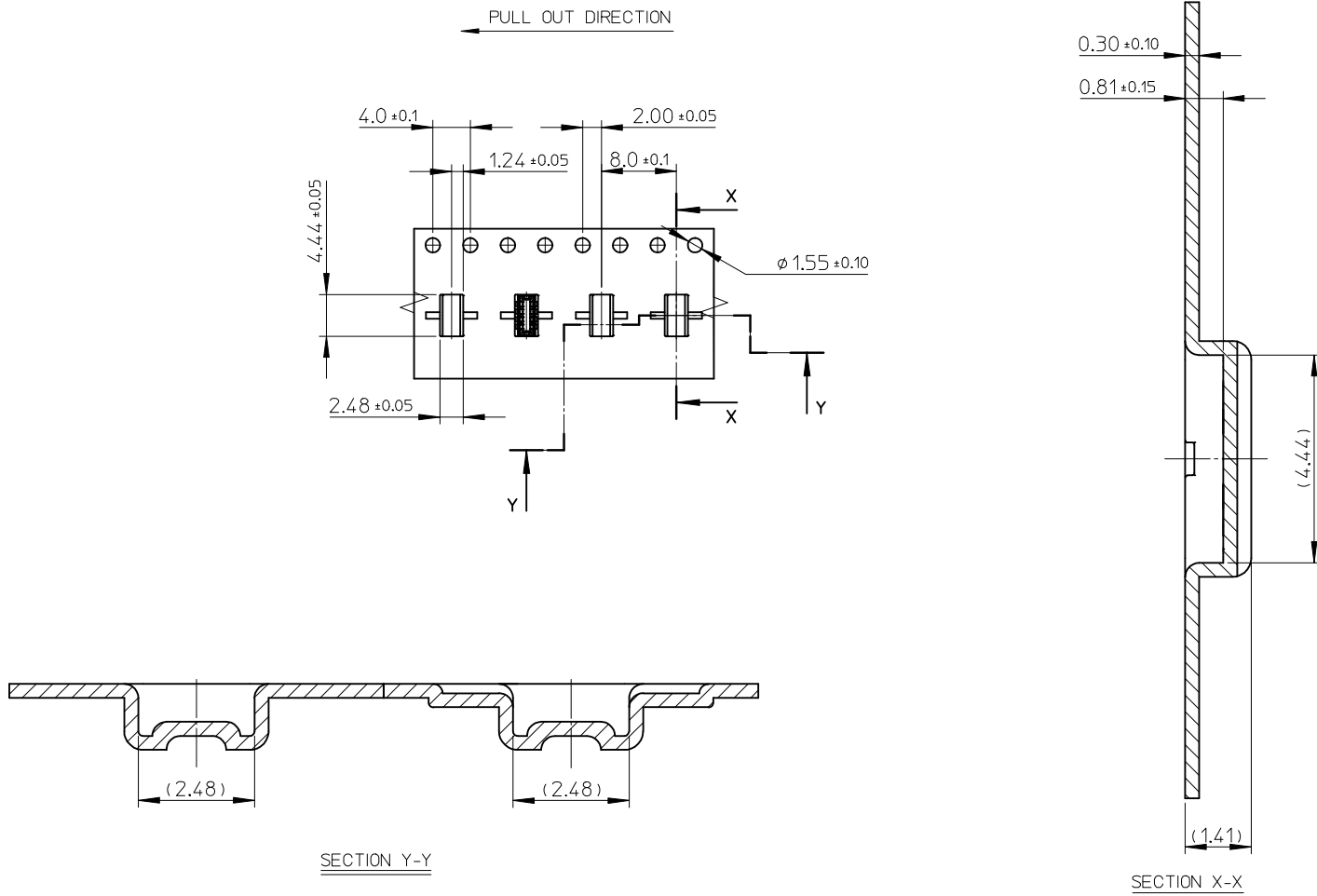
NOTES

1. RE DETAILED DIMENSION, SEE PRODUCT DRAWING.
2. NUMBER OF CONNECTORS : 5000PCS/REEL
3. LEAD TAPE LENGTH



4. COVER TAPE PEEL FORCE IS DEFINED BY IEC60286-3.
5. MATERIAL
 CARRIER TAPE : POLYSTYRENE
 TOP TAPE : PET , OTHER
 REEL : PS
 POLYSTYRENE (PS) <RECYCLE MATERIAL CONTAINED>
6. ELV AND RoHS COMPLIANT
7. THIS PRODUCT IS HIGH BARRIER PACKAGE INCLUDING SILICAGEL.
8. REFER TO RPS-104250-001 FOR CONDITIONS AFTER OPEN.

REVISED EC NO: KOR2016-0025 DRWN: JHCHANG 2015/09/17 CHKD: APPR: YSK1M02 2015/09/24	QUALITY SYMBOLS	GENERAL TOLERANCES (UNLESS SPECIFIED)		DIMENSION STYLE MM ONLY		SCALE 20:1	DESIGN UNITS METRIC	THIRD ANGLE PROJECTION
	$F_A=0$	mm	INCH	DRAWN BY JHCHANG	DATE 2015/03/06	TITLE 0.8 BB CONN H=0.75 BATTERY PLUG OVERMOLD (ONLY POWER TER'L VER)		
	$F_B=0$	4 PLACES ± --- ± ---	3 PLACES ± 0.1 ± ---	CHECKED BY KSKIM	DATE 2015/06/08	molex DOCUMENT NO. SD-104250-001 SHEET NO. 3 OF 4		
	$F_C=0$	2 PLACES ± 0.15 ± ---	1 PLACE ± 0.2 ± ---	APPROVED BY YSK1M02	DATE 2015/06/18			
$F_D=0$	0 PLACE ± --- ± ---	ANGULAR ± 1 °		MATERIAL NO.		SEE SHEET 1		
REV	DRAFT WHERE APPLICABLE MUST REMAIN WITHIN DIMENSIONS		SIZE A3		THIS DRAWING CONTAINS INFORMATION THAT IS PROPRIETARY TO MOLEX INCORPORATED AND SHOULD NOT BE USED WITHOUT WRITTEN PERMISSION			



SECTION Y-Y

SECTION X-X

REVISED EC NO: KOR2016-0025 DRWN: JHCHANG 2015/09/17 CHKD: APPR: YSKIM02 2015/09/24	QUALITY SYMBOLS	GENERAL TOLERANCES (UNLESS SPECIFIED)	DIMENSION STYLE	SCALE	DESIGN UNITS	THIRD ANGLE PROJECTION
	$F_{\text{A}}=0$	mm INCH	MM ONLY	20:1	METRIC	
	$F_{\text{B}}=0$	4 PLACES ± --- ± ---	DRAWN BY DATE	TITLE		
	$F_{\text{C}}=0$	3 PLACES ± 0.1 ± ---	JHCHANG 2015/03/06	0.8 BB CONN H=0.75 BATTERY PLUG OVERMOLD (ONLY POWER TER'L VER)		
$F_{\text{D}}=0$	2 PLACES ± 0.15 ± ---	CHECKED BY DATE	molex			
	1 PLACE ± 0.2 ± ---	KSKIM 2015/06/08	SD-104250-001			
	0 PLACE ± --- ± ---	APPROVED BY DATE	SHEET NO.			
	ANGULAR ± 1°	YSKIM02 2015/06/18	4 OF 4			
	DRAFT WHERE APPLICABLE MUST REMAIN WITHIN DIMENSIONS	MATERIAL NO.	DOCUMENT NO.			
		SEE SHEET 1	THIS DRAWING CONTAINS INFORMATION THAT IS PROPRIETARY TO MOLEX INCORPORATED AND SHOULD NOT BE USED WITHOUT WRITTEN PERMISSION			