



Chipsmall Limited consists of a professional team with an average of over 10 year of expertise in the distribution of electronic components. Based in Hongkong, we have already established firm and mutual-benefit business relationships with customers from,Europe,America and south Asia,supplying obsolete and hard-to-find components to meet their specific needs.

With the principle of “Quality Parts,Customers Priority,Honest Operation,and Considerate Service”,our business mainly focus on the distribution of electronic components. Line cards we deal with include Microchip,ALPS,ROHM,Xilinx,Pulse,ON,Everlight and Freescale. Main products comprise IC,Modules,Potentiometer,IC Socket,Relay,Connector.Our parts cover such applications as commercial,industrial, and automotives areas.

We are looking forward to setting up business relationship with you and hope to provide you with the best service and solution. Let us make a better world for our industry!



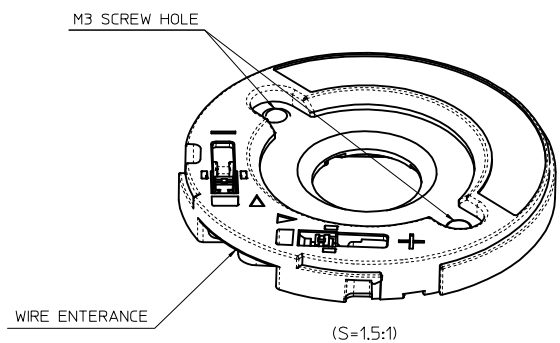
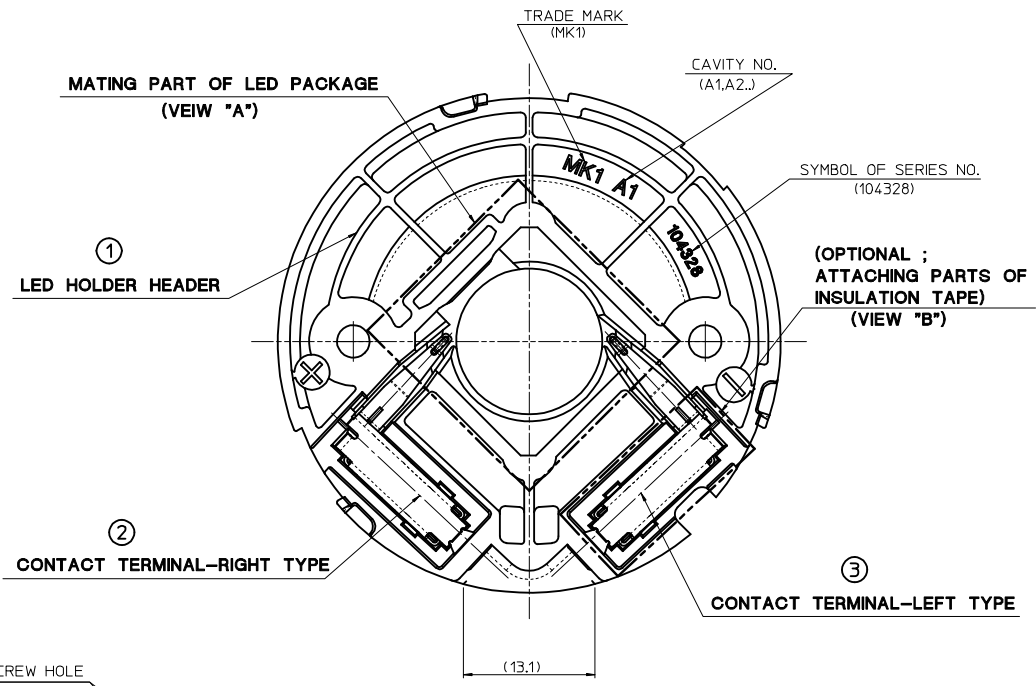
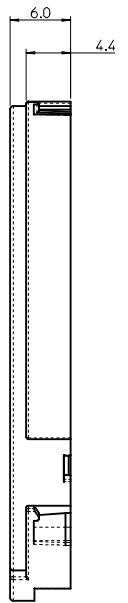
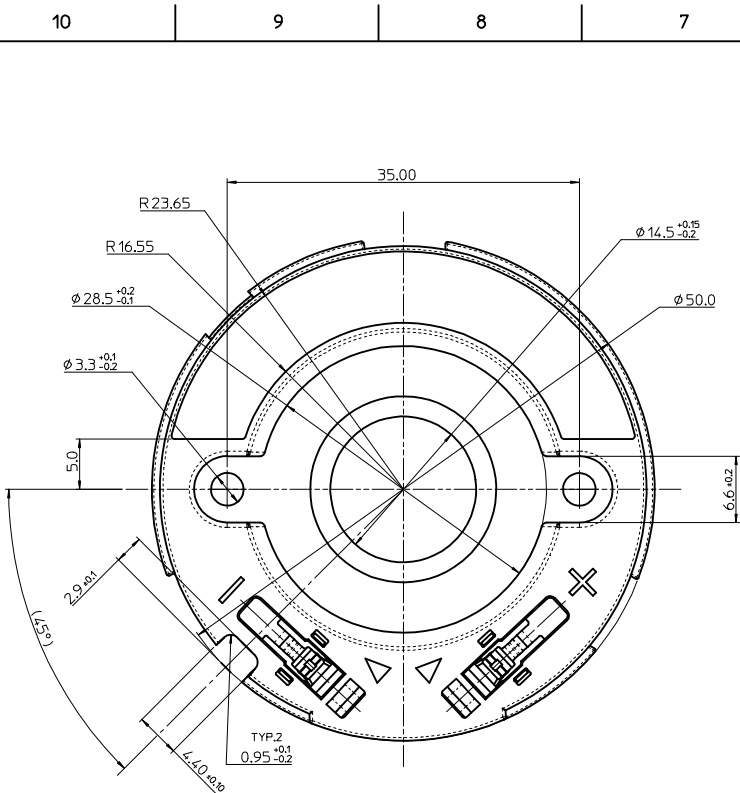
Contact us

Tel: +86-755-8981 8866 Fax: +86-755-8427 6832

Email & Skype: info@chipsmall.com Web: www.chipsmall.com

Address: A1208, Overseas Decoration Building, #122 Zhenhua RD., Futian, Shenzhen, China



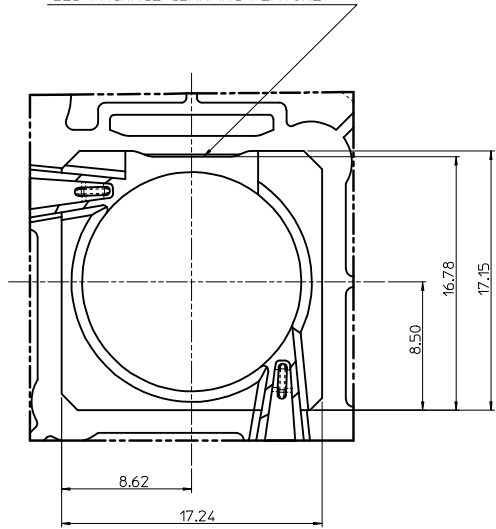


- NOTES
- MATERIAL
 - ① LED HOLDER HEADER : POLYESTER(PBT), GLASS FILLED, UL94V-0, HALOGEN FREE, COLOR OF NATURAL(WHITE)
 - ②③ CONTACT TERMINAL-LEFT,RIGHT : COPPER-ALLOY, 0.3mm THICKNESS
 - PLATING
 - ②③ CONTACT TERMINAL-LEFT,RIGHT : TIN PLATED
 - 1.0μm MINIMUM TIN PLATING
 - APPLICABLE WIRE RANGE :
 - (OUTSIDE WIRE INSULATION : 2.1mm DIAMETER MAX.)
 - SOLID WIRE : AWG #22~#18
 - STRAND WIRE : AWG #22,#20 (PRE TINNED IS RECOMMENDED)

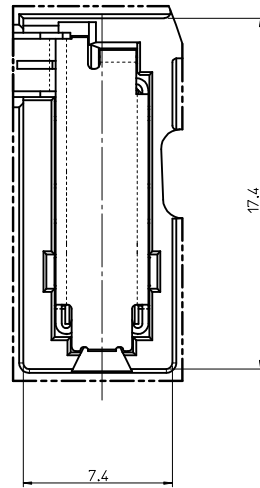
RELEASED EC NO: KOR2015-0147 DRWN: SCHONG03 2015/06/16 CHKD: SHCHU 2015/06/16 APPR: YSK IM02 2015/06/18	DESCRIPTION A	QUALITY SYMBOLS	GENERAL TOLERANCES (UNLESS SPECIFIED)	DIMENSION STYLE	SCALE	DESIGN UNITS	THIRD ANGLE PROJECTION																		
		$\nabla=0$ $\sphericalangle=0$	<table border="1"> <thead> <tr> <th></th> <th>mm</th> <th>INCH</th> </tr> </thead> <tbody> <tr> <td>4 PLACES</td> <td>± ---</td> <td>± ---</td> </tr> <tr> <td>3 PLACES</td> <td>± ---</td> <td>± ---</td> </tr> <tr> <td>2 PLACES</td> <td>± 0.15</td> <td>± ---</td> </tr> <tr> <td>1 PLACE</td> <td>± 0.25</td> <td>± ---</td> </tr> <tr> <td>0 PLACE</td> <td>± ---</td> <td>± ---</td> </tr> </tbody> </table>		mm	INCH	4 PLACES	± ---	± ---	3 PLACES	± ---	± ---	2 PLACES	± 0.15	± ---	1 PLACE	± 0.25	± ---	0 PLACE	± ---	± ---	MM ONLY	2:1	METRIC	
			mm	INCH																					
		4 PLACES	± ---	± ---																					
3 PLACES	± ---	± ---																							
2 PLACES	± 0.15	± ---																							
1 PLACE	± 0.25	± ---																							
0 PLACE	± ---	± ---																							
	ANGULAR ± 1°	DRAWN BY	DATE	TITLE																					
	DRAFT WHERE APPLICABLE MUST REMAIN WITHIN DIMENSIONS	SCHONG03	2015/06/16	14.5MM DIAMETER LED HOLDER HEADER ASS'Y																					
		CHECKED BY	DATE																						
		SHCHU	2015/06/16																						
		APPROVED BY	DATE	DOCUMENT NO.																					
		YSK IM02	2015/06/18	SD-104328-001																					
		MATERIAL NO.		SHEET NO.																					
		1043280210		1 OF 2																					
		SIZE	THIS DRAWING CONTAINS INFORMATION THAT IS PROPRIETARY TO MOLEX INCORPORATED AND SHOULD NOT BE USED WITHOUT WRITTEN PERMISSION																						
		A3																							

10 9 8 7 6 5 4 3 2 1

LED PACKAGE CLAMPING FEATURE

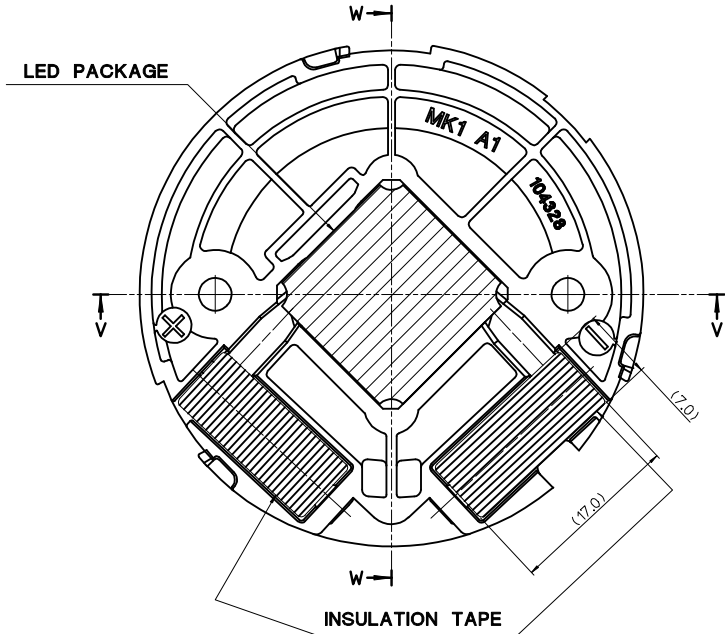


DETAIL "A"
(S=3:1)

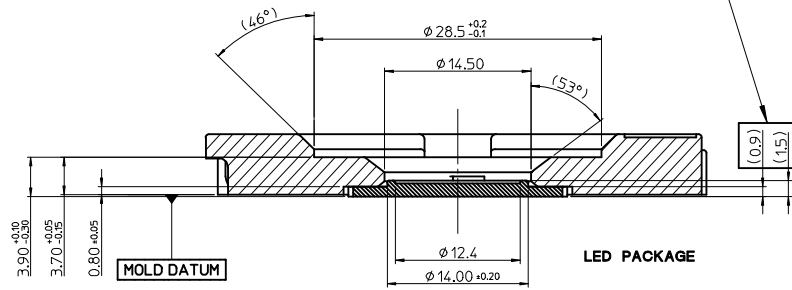


DETAIL "B"
(S=4:1)

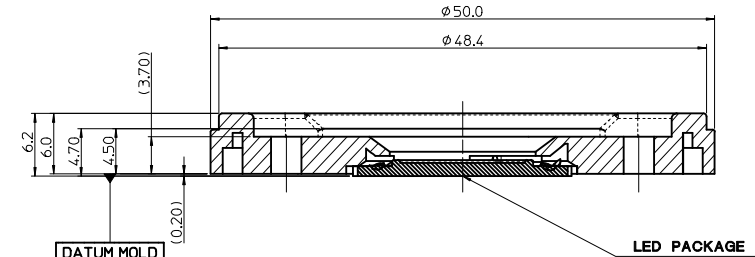
ILLUSTRATION OF HOLDER WITH LED PACKAGE ATTACHED
BOTTOM VIEW (REFERENCE)



RECOMMENDED LED PACKAGE THICKNESS



Section W-W



SECTION V-V

RELEASED EC NO: KOR2015-0147 DRWN: SCHONG03 CHKD: SHCHU APPR: YSK1M02	2015/06/16 2015/06/16 2015/06/18	DESCRIPTION A	QUALITY SYMBOLS	GENERAL TOLERANCES (UNLESS SPECIFIED)	DIMENSION STYLE	SCALE	DESIGN UNITS	THIRD ANGLE PROJECTION
			$\nabla = 0$ $\nabla \square = 0$	mm INCH 4 PLACES ± --- ± --- 3 PLACES ± --- ± --- 2 PLACES ± 0.15 ± --- 1 PLACE ± 0.25 ± --- 0 PLACE ± --- ± ---	MM ONLY	2:1	METRIC	
			ANGULAR ± 1 ° DRAFT WHERE APPLICABLE MUST REMAIN WITHIN DIMENSIONS	DRAWN BY: SCHONG03 CHECKED BY: SHCHU APPROVED BY: YSK1M02 DATE: 2015/06/16 DATE: 2015/06/16 DATE: 2015/06/18	TITLE	14.5MM DIAMETER LED HOLDER HEADER ASS'Y molex		
			MATERIAL NO. 1043280210 SIZE A3 THIS DRAWING CONTAINS INFORMATION THAT IS PROPRIETARY TO MOLEX INCORPORATED AND SHOULD NOT BE USED WITHOUT WRITTEN PERMISSION	DOCUMENT NO. SD-104328-001 SHEET NO. 2 OF 2				

9 8 7 6 5 4 3 2 1