



Chipsmall Limited consists of a professional team with an average of over 10 year of expertise in the distribution of electronic components. Based in Hongkong, we have already established firm and mutual-benefit business relationships with customers from,Europe,America and south Asia,supplying obsolete and hard-to-find components to meet their specific needs.

With the principle of “Quality Parts,Customers Priority,Honest Operation,and Considerate Service”,our business mainly focus on the distribution of electronic components. Line cards we deal with include Microchip,ALPS,ROHM,Xilinx,Pulse,ON,Everlight and Freescale. Main products comprise IC,Modules,Potentiometer,IC Socket,Relay,Connector.Our parts cover such applications as commercial,industrial, and automotives areas.

We are looking forward to setting up business relationship with you and hope to provide you with the best service and solution. Let us make a better world for our industry!



Contact us

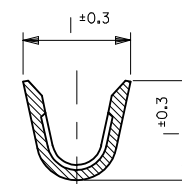
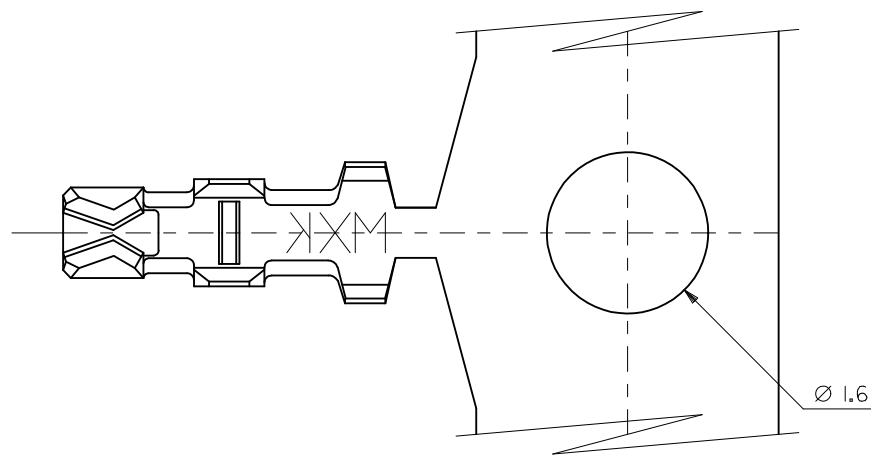
Tel: +86-755-8981 8866 Fax: +86-755-8427 6832

Email & Skype: info@chipsmall.com Web: www.chipsmall.com

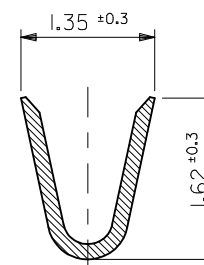
Address: A1208, Overseas Decoration Building, #122 Zhenhua RD., Futian, Shenzhen, China



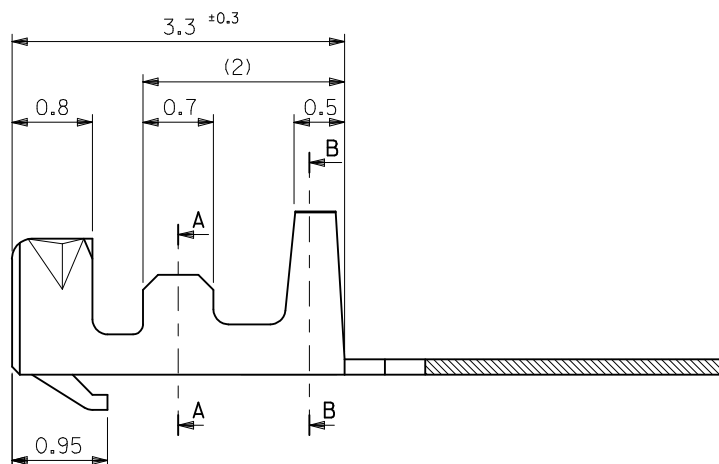
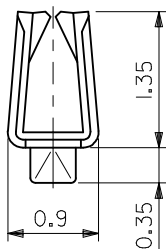
10 9 8 7 6 5 4 3 2 1



SECT. A-A



SECT. B-B



NOTES

1. MATERIAL : PHOSPHOR BRONZE, 0.152mm THICKNESS
2. PLATING : TIN(Sn)0.9μm MINIMUM. PRE-PLATED
3. APPLICABLE HOUSING : 104047-0490
4. APPLICABLE WIRE RANGE : AWG#28 -AWG#30

NEW RELEASED EC NO: KOR2010-0066 DRWN:CBCHIN 2009/10/15 CHKD:WYANG 2009/10/20 APPR:YUNSIKKIM 2009/10/21	DESCRIPTION	QUALITY SYMBOLS ▽=0 ◻=0	GENERAL TOLERANCES (UNLESS SPECIFIED)		DIMENSION STYLE MM ONLY		SCALE 1:1	DESIGN UNITS METRIC	THIRD ANGLE PROJECTION	
					DRAWN BY SK. HAN	DATE 2009/03/17	TITLE 1.25/2.0MM W/B CONN. CRIMP REC' TERMINAL			
					CHECKED BY WY. YANG	DATE 2009/03/17				
					APPROVED BY WY. YANG	DATE 2009/03/17				
					ANGULAR ± 3 °		MATERIAL NO. 1044668002		DOCUMENT NO. SD-104466-001	
A	REV		DRAFT WHERE APPLICABLE MUST REMAIN WITHIN DIMENSIONS		THIS DRAWING CONTAINS INFORMATION THAT IS PROPRIETARY TO MOLEX INCORPORATED AND SHOULD NOT BE USED WITHOUT WRITTEN PERMISSION					

9 8 7 6 5 4 3 2 1