



Chipsmall Limited consists of a professional team with an average of over 10 year of expertise in the distribution of electronic components. Based in Hongkong, we have already established firm and mutual-benefit business relationships with customers from,Europe,America and south Asia,supplying obsolete and hard-to-find components to meet their specific needs.

With the principle of “Quality Parts,Customers Priority,Honest Operation,and Considerate Service”,our business mainly focus on the distribution of electronic components. Line cards we deal with include Microchip,ALPS,ROHM,Xilinx,Pulse,ON,Everlight and Freescale. Main products comprise IC,Modules,Potentiometer,IC Socket,Relay,Connector.Our parts cover such applications as commercial,industrial, and automotives areas.

We are looking forward to setting up business relationship with you and hope to provide you with the best service and solution. Let us make a better world for our industry!



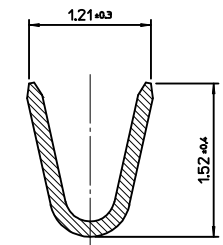
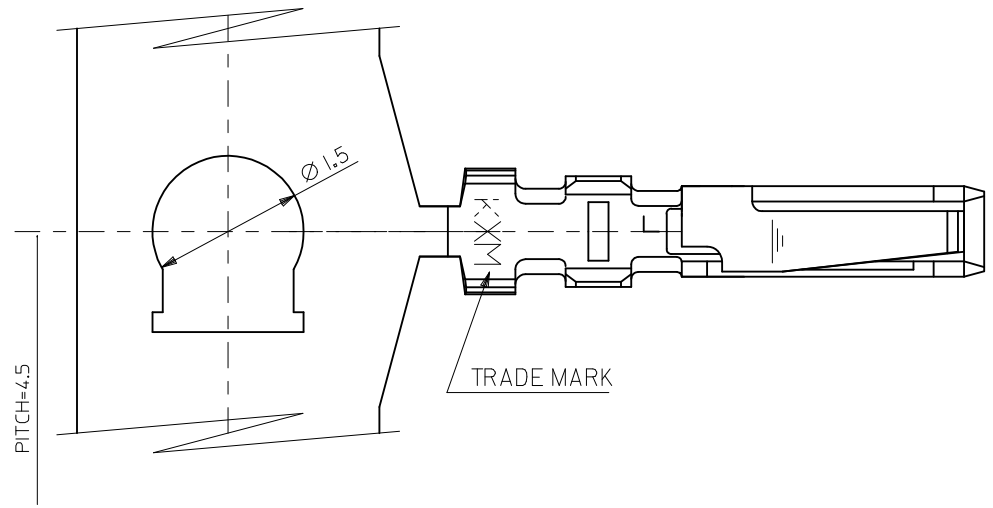
Contact us

Tel: +86-755-8981 8866 Fax: +86-755-8427 6832

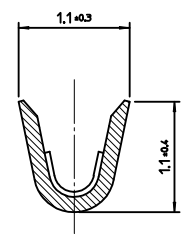
Email & Skype: info@chipsmall.com Web: www.chipsmall.com

Address: A1208, Overseas Decoration Building, #122 Zhenhua RD., Futian, Shenzhen, China

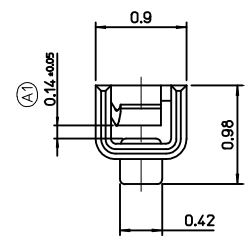
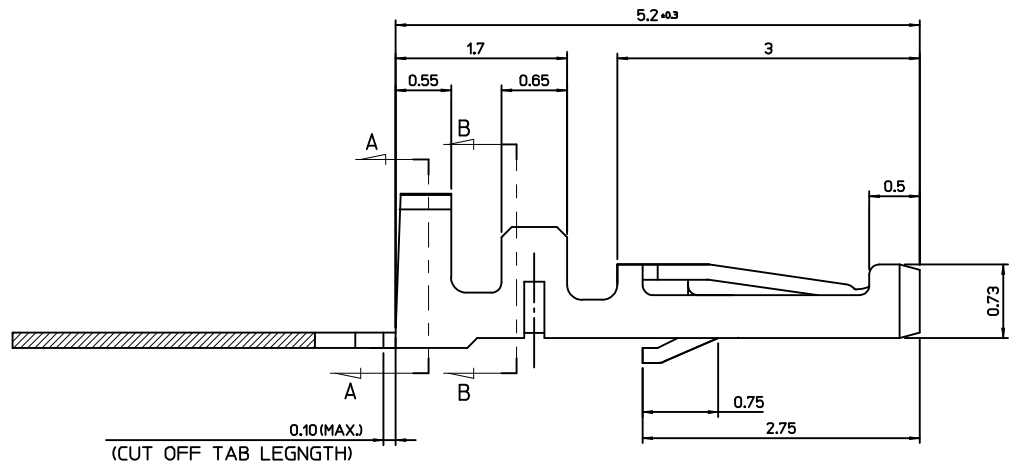




SECTION A-A



SECTION B-B



NOTES

1. APPLICABLE HOUSING : 104085-0400/104077-0600
104085-0410/104077-0610
104085-0300
2. MATERIAL : PHOSPHOR BRONZE, 0.15mm THICK'
3. FINISH : PRE-TIN PLATED
0.8~1.8 MICROMETER MINIMUM, TIN (Sn) OVER
0.3~0.8 MICROMETER COPPER
- ① 4. APPLICABLE WIRE RANGE: AWG#28
(INSULATION RANGE : 0.97 DIA.MM MAX.)

ORDER NUMBER 104505-8003

DESIGN UNITS: METRIC THIRD ANGLE PROJECTION

TITLE: 1.25MM W-T-B CONN. CRIMP REC' TERMINAL

MOLEX INCORPORATED

DOCUMENT NO. SD-104505-001 SHEET NO. 1 OF 1

THIS DRAWING CONTAINS INFORMATION THAT IS PROPRIETARY TO MOLEX INCORPORATED AND SHOULD NOT BE USED WITHOUT WRITTEN PERMISSION

REVISED EC NO: DRWN: JSSHIN CHKD: SHCHU APPR: A1	DESCRIPTION 2012/09/05	QUALITY SYMBOLS	GENERAL TOLERANCES (UNLESS SPECIFIED)	DIMENSION STYLE	SCALE	DESIGN UNITS	THIRD ANGLE PROJECTION	
		▽=0 Ⓢ=0	mm INCH	MM ONLY	20:1	METRIC		
		4 PLACES	± --- ± ---	DRAWN BY	DATE	TITLE		
		3 PLACES	± --- ± ---	CHECKED BY	DATE	1.25MM W-T-B CONN. CRIMP REC' TERMINAL		
		2 PLACES	± 0.20 ± ---	APPROVED BY	DATE	MOLEX INCORPORATED		
1 PLACE	± 0.25 ± ---	Y500.KIM	2010/01/29	DOCUMENT NO. SD-104505-001				
ANGULAR ± 1 °		DRAFT WHERE APPLICABLE MUST REMAIN WITHIN DIMENSIONS		MATERIAL NO. 1045058003		SHEET NO. 1 OF 1		