



Chipsmall Limited consists of a professional team with an average of over 10 year of expertise in the distribution of electronic components. Based in Hongkong, we have already established firm and mutual-benefit business relationships with customers from,Europe,America and south Asia,supplying obsolete and hard-to-find components to meet their specific needs.

With the principle of “Quality Parts,Customers Priority,Honest Operation,and Considerate Service”,our business mainly focus on the distribution of electronic components. Line cards we deal with include Microchip,ALPS,ROHM,Xilinx,Pulse,ON,Everlight and Freescale. Main products comprise IC,Modules,Potentiometer,IC Socket,Relay,Connector.Our parts cover such applications as commercial,industrial, and automotives areas.

We are looking forward to setting up business relationship with you and hope to provide you with the best service and solution. Let us make a better world for our industry!



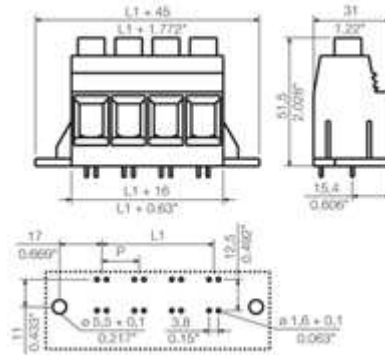
## Contact us

Tel: +86-755-8981 8866 Fax: +86-755-8427 6832

Email & Skype: info@chipsmall.com Web: www.chipsmall.com

Address: A1208, Overseas Decoration Building, #122 Zhenhua RD., Futian, Shenzhen, China



**LXXX 15.00/ 03/ 90F 4.5SN BK BX**View with Tabs | [List View](#)**General ordering data**

<b>Order No.</b>	1047300000
<b>Part designation</b>	LXXX 15.00/03/90F 4.5SN BK BX
<b>Version</b>	PCB terminal, Clamping yoke connection, Solder connection, Clamping range, max.: 50 mm <sup>2</sup> , Pitch in mm: 15.00 mm, No. of poles: 3, 90°, Box
<b>GTIN (EAN)</b>	4032248783854
<b>Qty.</b>	10 pc(s).
<b>Packaging</b>	Box

**System parameters**

<b>Product family</b>	System LXXX
<b>Conductor connection system</b>	Clamping yoke connection
<b>Fitted to PCB</b>	Solder connection
<b>Outgoing direction of conductor</b>	90°
<b>Pitch in mm</b>	15 mm
<b>Pitch in inch</b>	0.591 inch
<b>No. of poles</b>	3
<b>Fitted by customer</b>	No
<b>No. of rows</b>	1
<b>Solder pin length</b>	4.5 mm
<b>Diameter of solder eyelet</b>	1.6 mm
<b>Tolerance of the diameter of the solder eyelet</b>	+ 0,1 mm
<b>Number of solder pins per pole</b>	4

<b>Screwdriver blade</b>	1.2 x 6.5
<b>Screwdriver blade standard</b>	DIN 5264
<b>Tightening torque, min.</b>	2.5 Nm
<b>Tightening torque, max.</b>	4 Nm
<b>Clamping screw</b>	M 6
<b>Stripping length</b>	18 mm
<b>L1 in mm</b>	30 mm
<b>L1 in inch</b>	1.181 inch

#### Material data

<b>Insulating material</b>	Wemid (PA)
<b>Colour</b>	black
<b>Flammability class UL 94</b>	V-0
<b>CTI</b>	≥ 600
<b>Contact material</b>	Copper alloy
<b>Contact surface</b>	tinned
<b>Contact base material</b>	Copper alloy

#### Connectable conductors

<b>Clamping range, min.</b>	0.5 mm <sup>2</sup>
<b>Clamping range, max.</b>	50 mm <sup>2</sup>
<b>Conductor connection cross-section AWG, min.</b>	AWG 20
<b>Conductor connection cross-section AWG, max.</b>	AWG 1
<b>Solid, min. H05(07) V-U</b>	0.5 mm <sup>2</sup>
<b>Solid, max. H05(07) V-U</b>	16 mm <sup>2</sup>
<b>Stranded, max. H07V-R</b>	50 mm <sup>2</sup>
<b>Stranded, min. H07V-R</b>	6 mm <sup>2</sup>
<b>Flexible, min. H05(07) V-K</b>	0.5 mm <sup>2</sup>
<b>Flexible, max. H05(07) V-K</b>	35 mm <sup>2</sup>
<b>w. wire end ferrule, DIN 46228 pt 1, min</b>	0.5 mm <sup>2</sup>
<b>with wire end ferrule, DIN 46228 pt 1, max.</b>	35 mm <sup>2</sup>
<b>w. plastic collar ferrule, DIN 46228 pt 4, min.</b>	0.5 mm <sup>2</sup>
<b>with plastic collar ferrule, DIN 46228 pt 4, max.</b>	35 mm <sup>2</sup>

**DIN IEC rating data**

<b>Rated current, min. No. of poles (Tu= 20°C)</b>	150 A
<b>Rated current, no. of poles (Tu= 40°C), min.</b>	150 A
<b>Rated voltage for overvoltage class/ pollution severity II/ 2</b>	1,000 V
<b>Rated voltage for overvoltage class/ pollution severity III/ 2</b>	1,000 V
<b>Rated voltage at overvoltage category/ pollution degree III/ 3</b>	1,000 V
<b>Rated impulse withstand voltage for overvoltage class/ pollution severity II/ 2</b>	8 kV
<b>Rated impulse withstand voltage for overvoltage class/ pollution severity III/ 2</b>	8 kV
<b>Rated impulse withstand voltage for overvoltage class/ pollution severity III/ 3</b>	8 kV

**CSA rating data**

<b>Rated voltage (Use group B)</b>	600 V
<b>Rated current (use group B)</b>	127 A
<b>Rated voltage (Use group C)</b>	600 V
<b>Rated current (use group C)</b>	127 A
<b>Rated voltage (use group D)</b>	600 V
<b>Rated current (use group D)</b>	5 A
<b>Wire cross-section, AWG, min.</b>	AWG 20
<b>Wire cross-section, AWG, max.</b>	AWG 1

**UL 1059 rating data**

<b>Rated voltage (use group B)</b>	600 V
<b>Rated current (use group B)</b>	127 A
<b>Rated voltage (use group C)</b>	600 V
<b>Rated current (use group C)</b>	127 A
<b>Rated voltage (use group D)</b>	600 V

<b>Rated current (use group D)</b>	5 A
<b>Wire cross-section, AWG, min.</b>	AWG 20
<b>Wire cross-section, AWG, max.</b>	AWG 1

**Approvals****Approvals institutes****Classifications**

<b>eClass 6.0</b>	27-26-11-01
-------------------	-------------

**Notes**




- Additional colours on request
- Rated current related to rated cross-section and min. No. of poles.
- Wire end ferrule without plastic collar to DIN 46228 pt 1
- Wire end ferrule with plastic collar to DIN 46228 pt 4
- P on drg. = pitch
- Rated data refer only to the component itself. Clearance and creepage distances to other components are to be designed in accordance with the relevant application standards.
- IP 20 from 16 mm<sup>2</sup> to 50 mm<sup>2</sup>

**Notes****Similar products**

	Colour	No. of poles	Solder pin length	Order No.	Part designation	Version
	pebble grey	1	4.5 mm	1047360000	LXXX 15.00/01/90F 4.5SN GY BX	PCB terminal, Clamping yoke connection, Solder connection, Clamping range, max.: 50 mm <sup>2</sup> , Pitch in mm: 15.00 mm, No. of poles: 1, 90°, Box
		<input type="text"/>	<input type="text"/>	<input type="text"/>		

[▶ Add to Inquiry list](#)
[▶ PDF Datasheet](#)



	Colour	No. of poles	Solder pin length	Order No.	Part designation	Version
	pebble grey	2	4.5 mm	1047370000	LXXX 15.00/02/90F 4.5SN GY BX	PCB terminal, Clamping yoke connection, Solder connection, Clamping range, max.: 50 mm <sup>2</sup> , Pitch in mm: 15.00 mm, No. of poles: 2, 90°, Box
<input type="button" value="Add to Inquiry list"/> <input type="button" value="PDF Datasheet"/>						
	pebble grey	3	4.5 mm	1047380000	LXXX 15.00/03/90F 4.5SN GY BX	PCB terminal, Clamping yoke connection, Solder connection, Clamping range, max.: 50 mm <sup>2</sup> , Pitch in mm: 15.00 mm, No. of poles: 3, 90°, Box
<input type="button" value="Add to Inquiry list"/> <input type="button" value="PDF Datasheet"/>						
	pebble grey	4	4.5 mm	1047390000	LXXX 15.00/04/90F 4.5SN GY BX	PCB terminal, Clamping yoke connection, Solder connection, Clamping range, max.: 50 mm <sup>2</sup> , Pitch in mm: 15.00 mm, No. of poles: 4, 90°, Box
<input type="button" value="Add to Inquiry list"/> <input type="button" value="PDF Datasheet"/>						