



Chipsmall Limited consists of a professional team with an average of over 10 year of expertise in the distribution of electronic components. Based in Hongkong, we have already established firm and mutual-benefit business relationships with customers from,Europe,America and south Asia,supplying obsolete and hard-to-find components to meet their specific needs.

With the principle of “Quality Parts,Customers Priority,Honest Operation,and Considerate Service”,our business mainly focus on the distribution of electronic components. Line cards we deal with include Microchip,ALPS,ROHM,Xilinx,Pulse,ON,Everlight and Freescale. Main products comprise IC,Modules,Potentiometer,IC Socket,Relay,Connector.Our parts cover such applications as commercial,industrial, and automotives areas.

We are looking forward to setting up business relationship with you and hope to provide you with the best service and solution. Let us make a better world for our industry!



Contact us

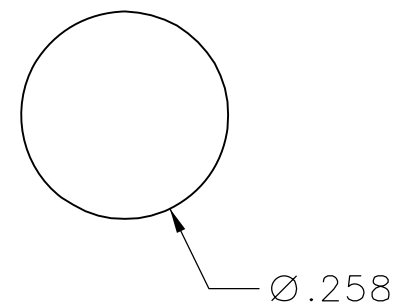
Tel: +86-755-8981 8866 Fax: +86-755-8427 6832

Email & Skype: info@chipsmall.com Web: www.chipsmall.com

Address: A1208, Overseas Decoration Building, #122 Zhenhua RD., Futian, Shenzhen, China



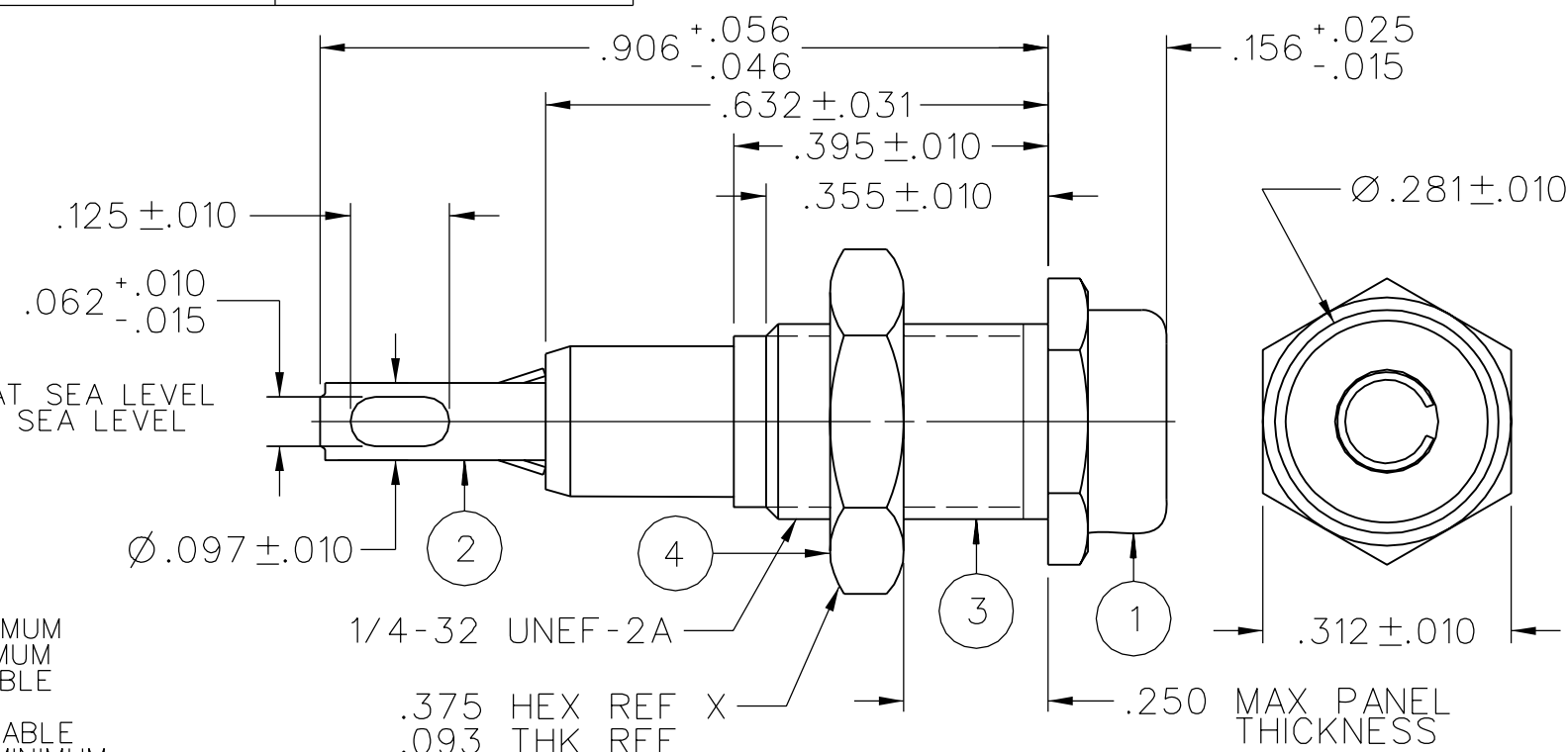
| PART NUMBER | ITEM ① | | ITEM ② | ITEM ③ |
|--------------|--------|--------|--|------------------------------|
| | BODY | COLOR | CONTACT | MOUNTING NUT |
| 105-0251-001 | NYLON | WHITE | PHOSPHOR BRONZE SILVER PL .0001 MIN | BRASS NICKEL PL .0001 MIN |
| 105-0252-001 | | RED | | |
| 105-0253-001 | | BLACK | | |
| 105-0254-001 | | GREEN | | |
| 105-0255-001 | | | | |
| 105-0256-001 | | ORANGE | | |
| 105-0257-001 | | YELLOW | | |
| 105-0258-001 | | BROWN | | |
| 105-0259-001 | | | | |
| 105-0260-001 | | BLUE | | |
| 105-0261-001 | | | | |
| 105-0262-001 | | VIOLET | | |
| 105-0263-001 | | GRAY | | |
| 105-0264-001 | | | | |
| 105-0265-001 | | | | |
| 105-0266-001 | | | | |
| 105-0267-001 | | | | |
| 105-0268-001 | | | | |
| 105-0269-001 | | | | |
| 105-0270-001 | | | | |



RECOMMENDED MOUNTING HOLE

| | | | |
|---|-----------|-----------------------|-----------------------|
| DRAWING NO. | | B - 105-0251/0270-001 | |
| 0 | REVISIONS | | |
| REVISED AND REDRAWN. DRAWING WAS "C" SIZE 105-0251/0268-001/201 DATED 7-15-87. SPLIT INTO 2 SEPERATE DWGS. CREATED SHEET 2. ***** * REVISION NUMBER FOLLOWED BY AN ALPHA * * CHARACTER INDICATES DRAWING CLARIFICATION OR PART NUMBER ADDITION ONLY * ***** | | | |
| 17c | 1-7-03 | R H | R J B |
| | | | 10-16-03 ECN 48697 |

NOTES:
 SPECIFICATIONS:
 ELECTRICAL:
 CURRENT RATING: 10 AMPS DC MINIMUM
 DIELECTRIC WITHSTANDING VOLTAGE: 5700 VRMS MINIMUM AT SEA LEVEL
 RECOMMENDED WORKING VOLTAGE: 1500 VRMS MAXIMUM AT SEA LEVEL
 INSULATION RESISTANCE: 5000 MEGOHMS MINIMUM
 CONTACT RESISTANCE: 10 MILLIOHMS MAXIMUM
 CAPACITANCE: 2 PF NOMINAL
 MECHANICAL:
 INSERTION/WITHDRAWAL FORCE: .5 - 5.0 POUNDS
 CONTACT RETENTION IN INSULATOR FORCE: 10 POUNDS MINIMUM
 CONTACT RETENTION IN INSULATOR TORQUE: 12 IN OZ MINIMUM
 INSULATOR RETENTION IN .062 PANEL FORCE: NOT APPLICABLE
 INSULATOR RETENTION IN SLEEVE FORCE: NOT APPLICABLE
 INSULATOR RETENTION IN .062 PANEL TORQUE: NOT APPLICABLE
 PLASTIC MOUNTING THREAD STRIPPING TORQUE: 4 IN LBS MINIMUM
 RESISTANCE TO TEST PROBE DAMAGE TORQUE: 2 IN LBS MINIMUM
 MATING TIP PLUG DIAMETER: .080
 DURABILITY: 1000 CYCLES MINIMUM
 ENVIRONMENTAL:
 (MEETS OR EXCEEDS THE APPLICABLE PARAGRAPH OF MIL-PRF-39024)
 OPERATING TEMPERATURE: -55 DEG C TO 85 DEG C
 TEMPERATURE RISE AT RATED CURRENT: 10 DEG C MAXIMUM
 CORROSION: MIL-STD-1344, METHOD 1001, CONDITION B
 SHOCK: MIL-STD-1344, METHOD 2004, CONDITION G
 VIBRATION: MIL-STD-1344, METHOD 2005, CONDITION I
 HUMIDITY: MIL-STD-1344, METHOD 1002, CONDITION B



CUSTOMER DRAWING

THIS DRAWING TO BE INTERPRETED PER ASME Y 14.5M - 1994

"μSTATION"

COMPANY CONFIDENTIAL

| | | | |
|--------------------------------------|----|--------------|----------|
| TOLERANCE UNLESS OTHERWISE SPECIFIED | | DRAWN BY | DATE |
| DECIMALS | mm | RJB | 12-16-02 |
| .XX | | CHECKED BY | DATE |
| .XXX REF | | | |
| MATL | | APPROVED BY | DATE |
| | | RJB | 10-16-03 |
| FINISH | | RELEASE DATE | 10-16-03 |
| | | U/M | INCH |
| | | SCALE | 4:1 |

cinch
CONNECTIVITY SOLUTIONS
a bel group

Cinch Connectivity Solutions
P.O. Box 1732
Waseca, MN 56093
1-800-247-8256

TITLE
ASSEMBLY, .080 (2.0mm) TIP JACK,
INSULATED METAL CLAD PANEL
MOUNT, SOLDER TERMINAL

SHEET 2 OF 2
DRAWING NO. B - 105-0251/0270-001