



Chipsmall Limited consists of a professional team with an average of over 10 year of expertise in the distribution of electronic components. Based in Hongkong, we have already established firm and mutual-benefit business relationships with customers from,Europe,America and south Asia,supplying obsolete and hard-to-find components to meet their specific needs.

With the principle of "Quality Parts,Customers Priority,Honest Operation,and Considerate Service",our business mainly focus on the distribution of electronic components. Line cards we deal with include Microchip,ALPS,ROHM,Xilinx,Pulse,ON,Everlight and Freescale. Main products comprise IC,Modules,Potentiometer,IC Socket,Relay,Connector.Our parts cover such applications as commercial,industrial, and automotives areas.

We are looking forward to setting up business relationship with you and hope to provide you with the best service and solution. Let us make a better world for our industry!



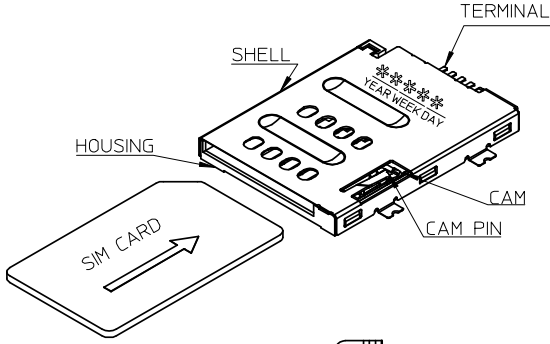
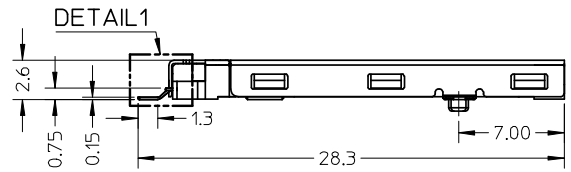
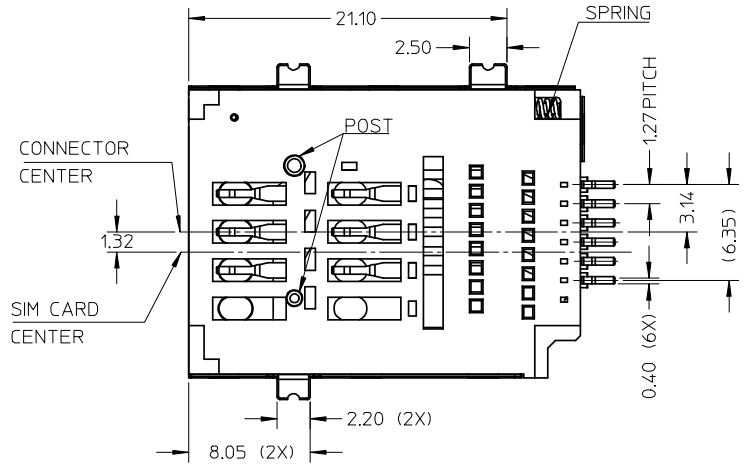
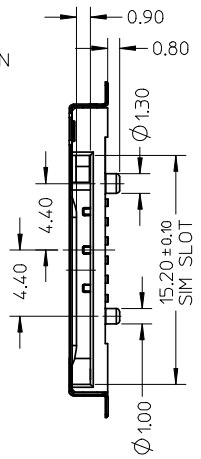
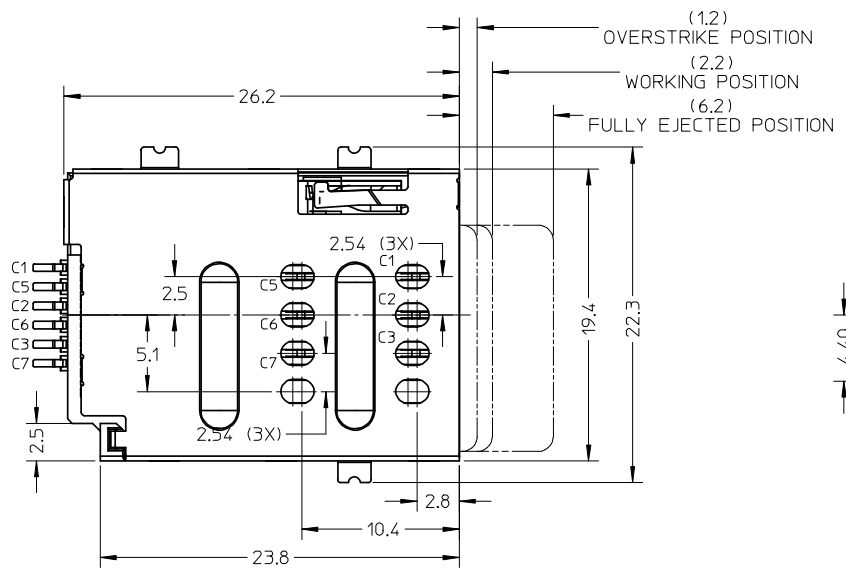
Contact us

Tel: +86-755-8981 8866 Fax: +86-755-8427 6832

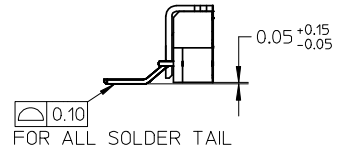
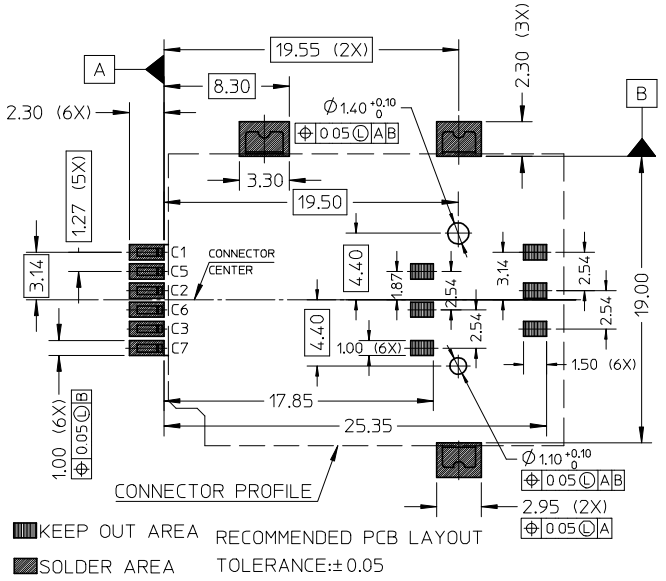
Email & Skype: info@chipsmall.com Web: www.chipsmall.com

Address: A1208, Overseas Decoration Building, #122 Zhenhua RD., Futian, Shenzhen, China





NOTES:
 1.MATERIAL: CAM: NYLON, GLASS FILLED, UL94V-0, COLOR:BLACK
 HOUSING : LCP, GLASS FILLED, UL94V-0, COLOR:BLACK
 TERMINAL : PHOSPHOR BRONZE
 SHELL: STAINLESS STEEL
 SPRING: SWPB
 CAM PIN:STAINLESS STEEL
 2.FINISH: TERMINAL: 50µ MIN NICKEL UNDER PLATED
 30µ MIN GOLD PLATING ON CONTACT AREA
 50µ MIN TIN ON SOLDERING AREA
 SHELL: 50µ MIN NICKEL UNDER PLATED
 GOLD FLASH ON SOLDERING AREA
 SPRING: 60µ MIN NICKEL OVER 100µ MIN CUPRUM UNDERPLATED
 3.THIS PART IS LEAD-FREE.



1050341001	PUSH PUSH SIM WITH POST
1050340001	PUSH PUSH SIM WITHOUT POST
PART NO.	DESCRIPTION

RELEASED EC NO: SHZ008-0670 DRWN:YWANG91 2008/06/30 CHKD:YLZHU 2008/06/30 APPR:HWANG 2008/07/03	QUALITY SYMBOLS	GENERAL TOLERANCES (UNLESS SPECIFIED)		DIMENSION STYLE MM ONLY		SCALE 3:1	DESIGN UNITS METRIC	THIRD ANGLE PROJECTION	
	▽=0 ∇=0	4 PLACES ± --- ± ---	mm	INCH	DRAWN BY YWANG	DATE 2007/12/21	TITLE 2.6MM H, 6 PIN PUSH-PUSH SIM CONNECTOR		
		3 PLACES ± --- ± ---			CHECKED BY YLZHU	DATE 2007/12/21	MATERIAL NO. SEE TABLE		
		2 PLACES ± 0.15 ± ---			APPROVED BY HWANG	DATE 2007/12/21	DOCUMENT NO. SD-105034-001		
		1 PLACE ± 0.2 ± ---			ANGULAR ± 2 °		SHEET NO. 1 OF 1		
		DRAFT WHERE APPLICABLE MUST REMAIN WITHIN DIMENSIONS		SIZE A3		THIS DRAWING CONTAINS INFORMATION THAT IS PROPRIETARY TO MOLEX INCORPORATED AND SHOULD NOT BE USED WITHOUT WRITTEN PERMISSION			