



Chipsmall Limited consists of a professional team with an average of over 10 year of expertise in the distribution of electronic components. Based in Hongkong, we have already established firm and mutual-benefit business relationships with customers from,Europe,America and south Asia,supplying obsolete and hard-to-find components to meet their specific needs.

With the principle of “Quality Parts,Customers Priority,Honest Operation,and Considerate Service”,our business mainly focus on the distribution of electronic components. Line cards we deal with include Microchip,ALPS,ROHM,Xilinx,Pulse,ON,Everlight and Freescale. Main products comprise IC,Modules,Potentiometer,IC Socket,Relay,Connector.Our parts cover such applications as commercial,industrial, and automotives areas.

We are looking forward to setting up business relationship with you and hope to provide you with the best service and solution. Let us make a better world for our industry!



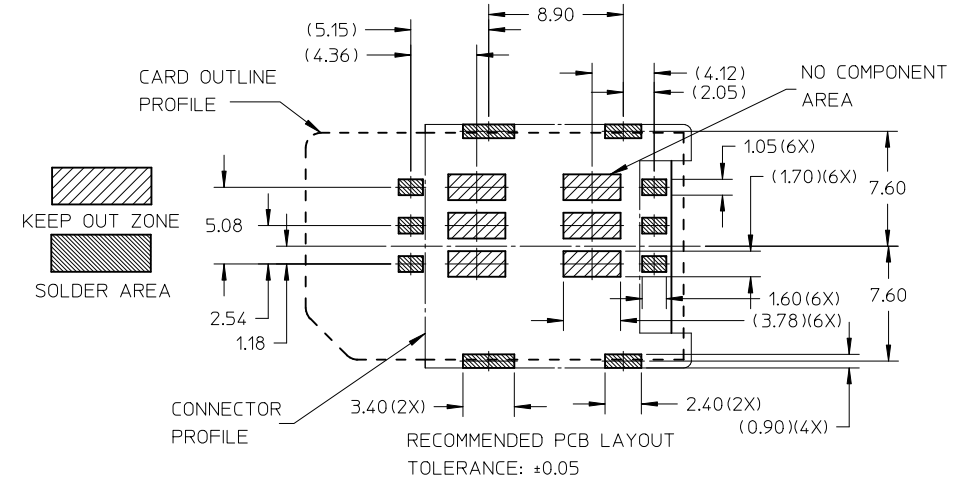
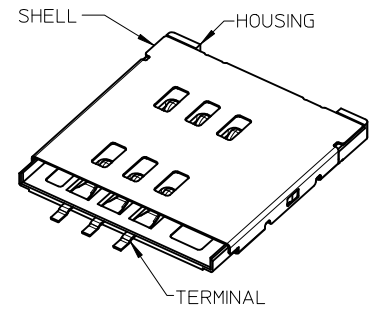
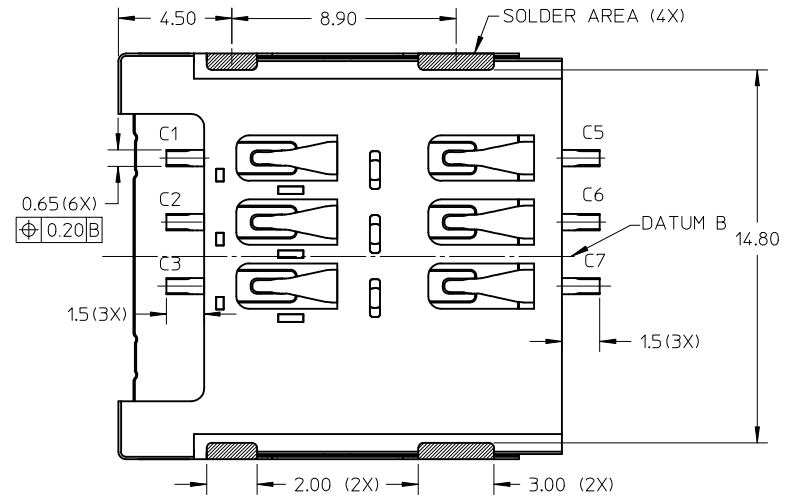
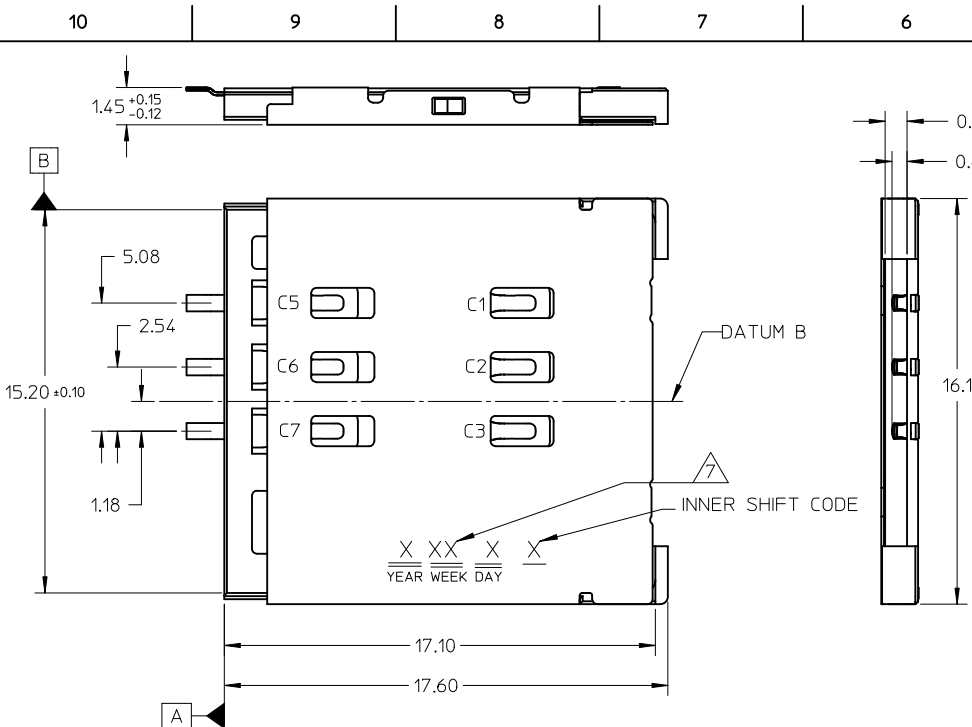
Contact us

Tel: +86-755-8981 8866 Fax: +86-755-8427 6832

Email & Skype: info@chipsmall.com Web: www.chipsmall.com

Address: A1208, Overseas Decoration Building, #122 Zhenhua RD., Futian, Shenzhen, China





NOTE:
 1 MATERIAL
 HOUSING : LIQUID CRYSTALLINE POLYMER (LCP), GLASS FILLED UL94V-0, COLOR: BLACK
 TERMINAL: PHOSPHOR BRONZE
 SHELL : STAINLESS STEEL
 2 FINISHES
 TERMINAL: 0.375um (15u") MIN GOLD ON CONTACT AREA
 0.0762 - 0.127um (3 - 5u") GOLD FLASH ON SOLDERTAILS
 1.27um (50u") MIN NICKEL UNDERPLATE OVER ALL
 SHELL : 0.0762um (3u") MIN GOLD FLASH OVER 1.27UM (50u") MIN NICKEL UNDERPLATE ON SOLDER AREAS
 3 PRODUCT SPECIFICATION: PS-105048-001
 4 PACKAGING SPECIFICATION: PK-105048-001
 5 ALL SOLDERTAILS COPLANARITY: 0.08mm MAX
 6 COMPLIANT TO RoHS DIRECTIVE 2002/95/EC & ELV DIRECTIVE 2000/53/EC
 7 DATE CODE * * * * (4 DIGITS)

MODIFIED SHELL EC NO: S2010-0862 DRW:KHLIM 2010/04/13 CHKD:JTAN 2010/05/04 APPR:SKTOH 2010/06/02	QUALITY SYMBOLS $\nabla_A = 0$ $\nabla_C = 0$ $\nabla_B = 0$	GENERAL TOLERANCES (UNLESS SPECIFIED)		DIMENSION STYLE		SCALE	DESIGN UNITS	THIRD ANGLE PROJECTION		
				MM ONLY		NTS	METRIC			
				DRAWN BY	DATE	TITLE				
				CHECKED BY	DATE	SIM CONNECTOR 6 PINS WITH GUIDE RAIL 1.45MM HEIGHT				
		ANGULAR $\pm 3^\circ$		APPROVED BY	DATE	MOLEX INCORPORATED				
		DRAFT WHERE APPLICABLE MUST REMAIN WITHIN DIMENSIONS		MATERIAL NO.	2010/02/11	DOCUMENT NO.		SHEET NO.		
A4				1050481001		SD-105048-101		1 OF 1		
				THIS DRAWING CONTAINS INFORMATION THAT IS PROPRIETARY TO MOLEX INCORPORATED AND SHOULD NOT BE USED WITHOUT WRITTEN PERMISSION						