



Chipsmall Limited consists of a professional team with an average of over 10 year of expertise in the distribution of electronic components. Based in Hongkong, we have already established firm and mutual-benefit business relationships with customers from,Europe,America and south Asia,supplying obsolete and hard-to-find components to meet their specific needs.

With the principle of “Quality Parts,Customers Priority,Honest Operation,and Considerate Service”,our business mainly focus on the distribution of electronic components. Line cards we deal with include Microchip,ALPS,ROHM,Xilinx,Pulse,ON,Everlight and Freescale. Main products comprise IC,Modules,Potentiometer,IC Socket,Relay,Connector.Our parts cover such applications as commercial,industrial, and automotives areas.

We are looking forward to setting up business relationship with you and hope to provide you with the best service and solution. Let us make a better world for our industry!



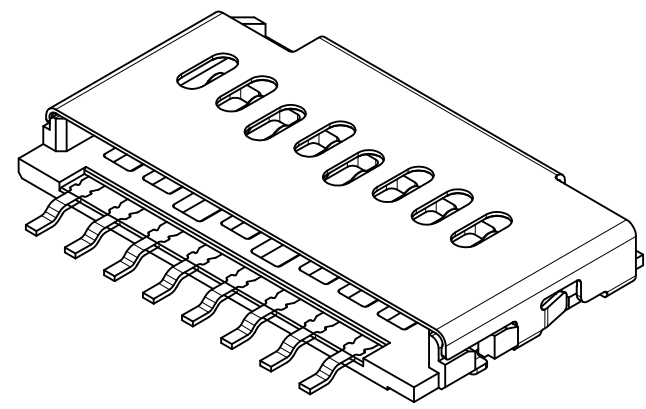
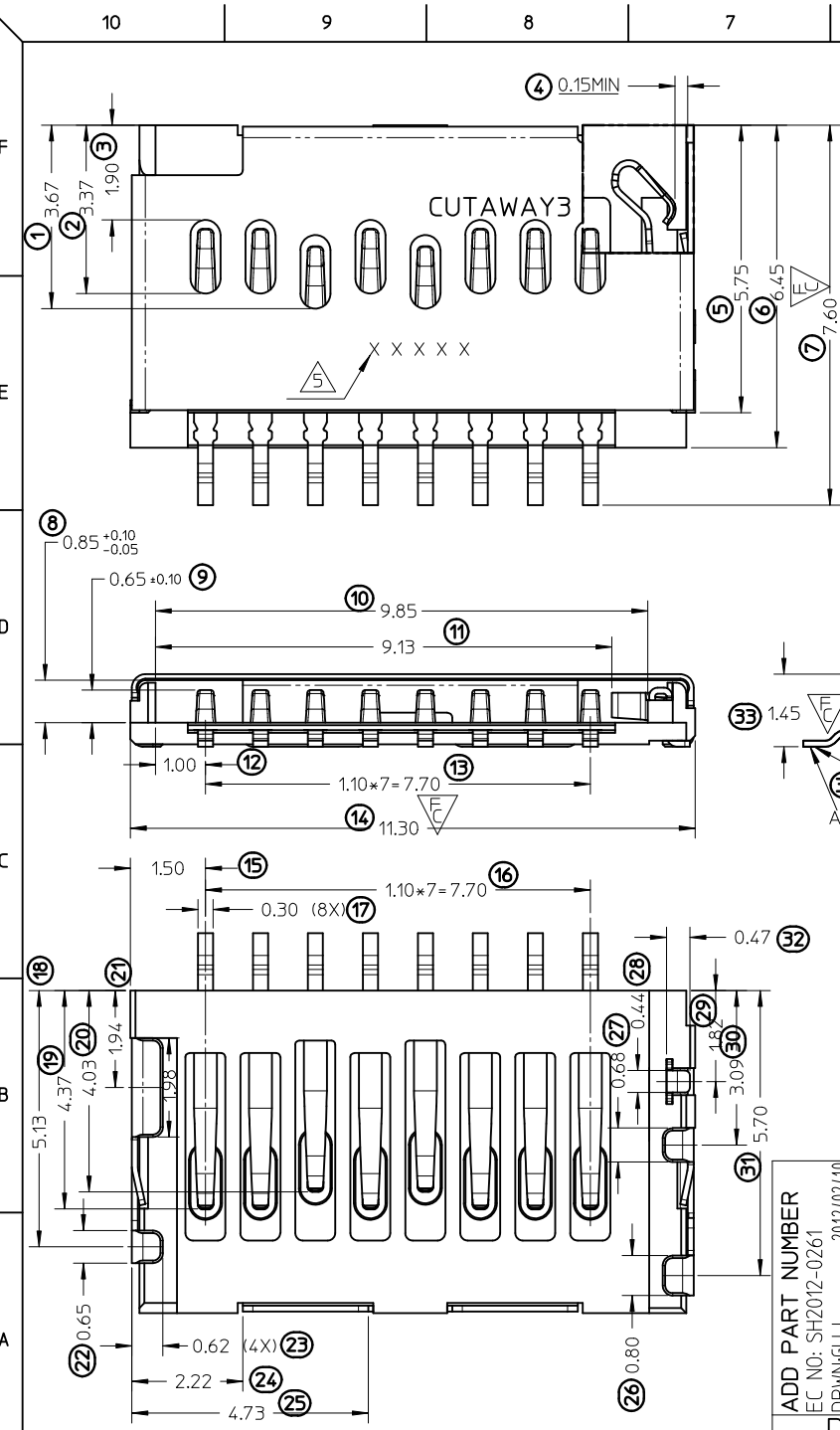
Contact us

Tel: +86-755-8981 8866 Fax: +86-755-8427 6832

Email & Skype: info@chipsmall.com Web: www.chipsmall.com

Address: A1208, Overseas Decoration Building, #122 Zhenhua RD., Futian, Shenzhen, China

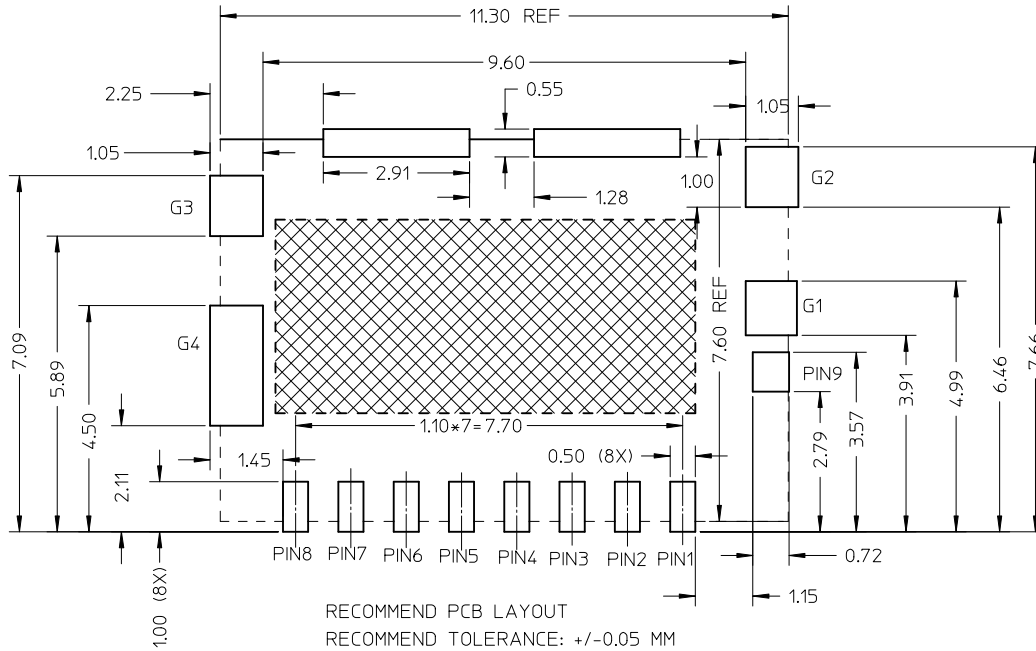




- NOTES:
- MATERIAL:
 - 1-1 HOUSING: HIGH TEMPERATURE THERMOPLASTIC, UL 94V-0, BLACK
 - 1-2 SIGNAL TERMINAL AND DETECT TERMINAL: PHOSPHOR BRONZE
 - 1-3 METAL SHELL: STAINLESS STEEL
 - FINISH:
 - 2-1 SIGNAL TERMINAL: 1.25 MICRON NICKEL MIN UNDER-PLATED, CONTACT AREA SEE TABLE, GOLD FLASH ON SOLDER AREA.
 - 2-2 METAL SHELL: GOLD FLASH PLATED AT SOLDER PAD AND CONTACT AREA.
 - 2-3 DETECT PIN: 1.25 MICRON NICKEL MIN UNDER-PLATED, 0.375 MICRON MIN GOLD PLATING ON CONTACT AREA, GOLD FLASH ON SOLDER AREA.
 - PRODUCT SPECIFICATION: PS-105162-001.
 - PACKAGE SPECIFICATION: PK-105162-001.
 - THE MARK "X" MEANS THE MANUFACTURE YEAR. THE FOLLOW "XXX" MEANS THE MANUFACTURE DAY. FOR EXAMPLE "2010/01/26" SHOULD BE "0026". THE LAST "X" MEANS SHIFT IDENTIFY CODE, SUCH AS "A, B, C".
 - PRODUCT COMPLIANT TO RoHS DIRECTIVE 2002/95/EC AND ELV 2000/53/EC.

105162-0101	0.38 MICRON MIN. GOLD PLATING
105162-0001	0.76 MICRON MIN. GOLD PLATING
105162-1001	0.1 MICRON MIN. GOLD PLATING
P/N	CONTACT AREA PLATING

ADD PART NUMBER EC NO: SH2012-0261 DRAWN: GLLI CHKD: APPR: AYIN REV:	DESCRIPTION 2012/02/10 2012/02/23	QUALITY SYMBOLS	GENERAL TOLERANCES (UNLESS SPECIFIED)		DIMENSION STYLE		SCALE	DESIGN UNITS	THIRD ANGLE PROJECTION
		$F_{\Delta}=0$ $F_{\Delta}=3$ $F_{\Delta}=0$	mm	INCH	MM ONLY		1:1	METRIC	
		4 PLACES ± --- ± --- 3 PLACES ± --- ± --- 2 PLACES ± 0.15 ± --- 1 PLACE ± 0.20 ± ---	ANGULAR ± 3°		DRAWN BY	DATE	TITLE		
		DRAFT WHERE APPLICABLE MUST REMAIN WITHIN DIMENSIONS		SEE TABLE	JL IU39	2011/04/08	1.45H MICRO SD HEADER WITH D/C PIN		
				APPROVED BY		DATE		MOLEX INCORPORATED	
				XJSONG		2011/04/12		SD-105162-001	
				MATERIAL NO.		DOCUMENT NO.		SHEET NO.	
				SEE TABLE				1 OF 2	
				SIZE		THIS DRAWING CONTAINS INFORMATION THAT IS PROPRIETARY TO MOLEX INCORPORATED AND SHOULD NOT BE USED WITHOUT WRITTEN PERMISSION			
				A3					



RECOMMEND PCB LAYOUT
 RECOMMEND TOLERANCE: +/-0.05 MM
 FRAME OF CONNECTOR: - - - - -
 TERMINAL AREA NO TRACE LAY AT:

G4	GND
G3	GND
G2	GND
G1	GND
P9	DET
P8	DAT1
P7	DAT0
P6	VSS
P5	CLK
P4	VDD
P3	CMD
P2	CD/DAT3
P1	DAT2
NAME	TYPE
PIN ASSIGNMENT	

SEE SHEET 1 EC NO: SH2012-0261 DRWG: JLL1 CHKD: APPR: AYIN REV	DESCRIPTION 2012/02/10 2012/02/23	QUALITY SYMBOLS	GENERAL TOLERANCES (UNLESS SPECIFIED)		DIMENSION STYLE	SCALE	DESIGN UNITS	THIRD ANGLE PROJECTION	
		$\nabla_F=0$	mm	INCH	MM ONLY	1:1	METRIC		
		$\nabla_E=0$	4 PLACES ± --- ± ---	3 PLACES ± --- ± ---	2 PLACES ± 0.15 ± ---	1 PLACE ± 0.20 ± ---	DRAWN BY	DATE	TITLE
		$\nabla_D=0$	ANGULAR ± 3 °		DRAFT WHERE APPLICABLE MUST REMAIN WITHIN DIMENSIONS		JL1U39	2011/04/08	1.45H MICRO SD HEADER WITH D/C PIN
				APPROVED BY		DATE	MOLEX INCORPORATED		
				XJSONG		2011/04/12	SD-105162-001		
				MATERIAL NO.		DOCUMENT NO.	SHEET NO.		
				SEE SHEET 1				2 OF 2	
				SIZE		THIS DRAWING CONTAINS INFORMATION THAT IS PROPRIETARY TO MOLEX INCORPORATED AND SHOULD NOT BE USED WITHOUT WRITTEN PERMISSION			
				A3					