



Chipsmall Limited consists of a professional team with an average of over 10 year of expertise in the distribution of electronic components. Based in Hongkong, we have already established firm and mutual-benefit business relationships with customers from,Europe,America and south Asia,supplying obsolete and hard-to-find components to meet their specific needs.

With the principle of “Quality Parts,Customers Priority,Honest Operation,and Considerate Service”,our business mainly focus on the distribution of electronic components. Line cards we deal with include Microchip,ALPS,ROHM,Xilinx,Pulse,ON,Everlight and Freescale. Main products comprise IC,Modules,Potentiometer,IC Socket,Relay,Connector.Our parts cover such applications as commercial,industrial, and automotives areas.

We are looking forward to setting up business relationship with you and hope to provide you with the best service and solution. Let us make a better world for our industry!



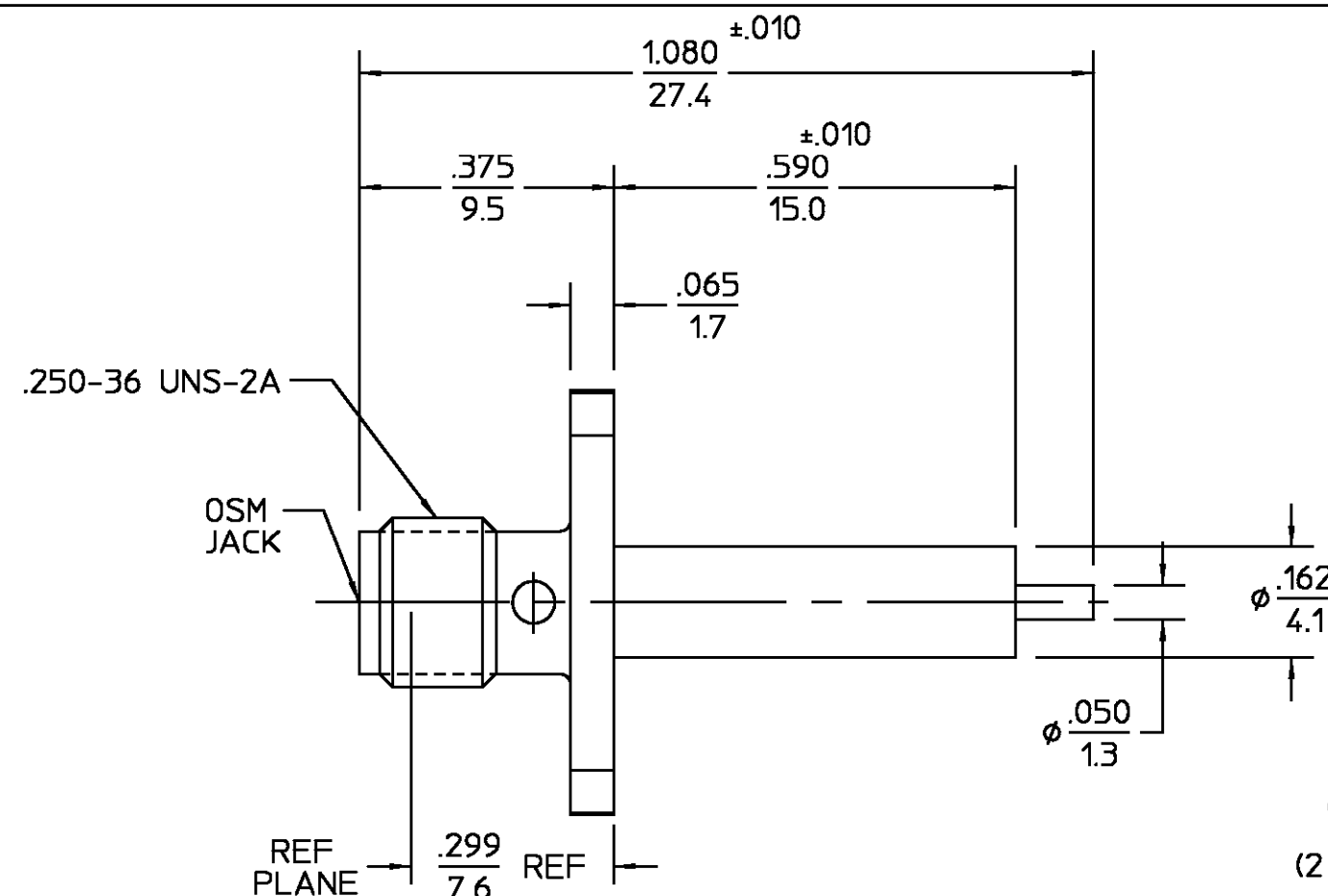
## Contact us

Tel: +86-755-8981 8866 Fax: +86-755-8427 6832

Email & Skype: info@chipsmall.com Web: www.chipsmall.com

Address: A1208, Overseas Decoration Building, #122 Zhenhua RD., Futian, Shenzhen, China





REVISIONS			
REV	DESCRIPTION	DATE	APPROVED
01 <sub>3</sub>	REVISED ECN 97-0358-2	10/27/97	Tubag

ELECTRICAL
Nominal Impedance (Ohms) <u>50</u>
Frequency Range (GHz) DC to <u>18</u>
Volt Rating (VRMS MAX) @ Sea Level <u>335</u>
VSWR <u>1.05 + .005f GHz</u>
Insertion Loss (dB MAX) <u>.03√f GHz</u>
RF Leakage (dB MIN) <u>-[60-f(GHz)]</u>
Corona, 70,000 Ft (VRMS MIN) <u>250</u>
Dielectric Withstanding Voltage (VRMS MIN) @ Sea Level <u>1000</u>
Contact Resistance (Milliohms MAX)
Center Contact <u>3.0</u>
Outer Contact <u>2.0</u>
Cable to Housing <u>N/A</u>
RF High Potential @ Sea Level (VRMS MIN @ 5 MHz) <u>670</u>
LR.(Megohms MIN) <u>10,000</u>

MECHANICAL
Interface Dimensions MIL-STD-348A, Fig. <u>310-2</u>
Recommended Mating Torque <u>7-10 in-Lbs</u>
Mating Characteristics:
Insertion (MAX Lbs) <u>3.0</u>
Withdrawal (MIN Oz) <u>1.0</u>
Force to Engage and Disengage (In/Lbs MAX) <u>2</u>
Center Contact Captivation Axial (Lbs) <u>6.0</u>
Radial (In/Oz) <u>4.0</u>
Weight (Grams) <u>2.2</u>

ENVIRONMENTAL
Temperature Rating <u>-65°C To +125°C</u>
Vibration MIL-STD-202, Method <u>204, Condition B</u>
Shock MIL-STD-202, Method 213, Condition I
Thermal Shock MIL-STD-202, Method 107, Condition B,
Moisture Resistance MIL-STD-202, Method 106, Except Vibration Shall Be Omitted
Corrosion - MIL-STD-202, Method <u>101, Condition B, 5% salt spray</u>

.XXX = in  
XX.X = mm (REF)

COMPONENT	MATERIAL	FINISH
HOUSING	STAINLESS STEEL PER ASTM-A484 AND ASTM- A582, TYPE 303	PASSIVATE PER QQ-P-35
DIELECTRIC	PTFE FLUOROCARBON PER ASTM-D-1457	N/A
CENTER CONTACT	BERYLLIUM COPPER PER ASTM-B-196 OR ASTM-B-197, ALLOY C17300, CONDITION H	GOLD PLATE PER MIL-G-45204

UNLESS OTHERWISE SPECIFIED  
DIMENSIONS ARE IN INCHES  
TOLERANCE ON  
FRAC. DEC. ANGLES  
± 1/64 ±.005 ± °

These drawings and specifications are the property of  
M/A-COM Incorporated and shall  
not be reproduced or copied or  
used in whole or in part as the  
basis for the manufacture or  
sale of item(s) without written  
permission.

DRAWN BY	DATE
RMK	4-30-69
CHECKED BY	PW 5/14/69
APPD BY	SIR 5/14/69
USE ASS'Y PROCEDURE	
NO. AP. <u>N/A</u>	

AMP Incorporated 140 Fourth Avenue Waltham, MA 02451-7599			
TITLE OSM FLANGE MOUNT JACK RECEPTACLE STRAIGHT TERMINAL			
SIZE B	CODE IDENT NO. 26805	2052-1352-02	REV 01 <sub>3</sub>
SCALE 4:1			SHEET 1 OF 1