



Chipsmall Limited consists of a professional team with an average of over 10 year of expertise in the distribution of electronic components. Based in Hongkong, we have already established firm and mutual-benefit business relationships with customers from,Europe,America and south Asia,supplying obsolete and hard-to-find components to meet their specific needs.

With the principle of “Quality Parts,Customers Priority,Honest Operation,and Considerate Service”,our business mainly focus on the distribution of electronic components. Line cards we deal with include Microchip,ALPS,ROHM,Xilinx,Pulse,ON,Everlight and Freescale. Main products comprise IC,Modules,Potentiometer,IC Socket,Relay,Connector.Our parts cover such applications as commercial,industrial, and automotives areas.

We are looking forward to setting up business relationship with you and hope to provide you with the best service and solution. Let us make a better world for our industry!



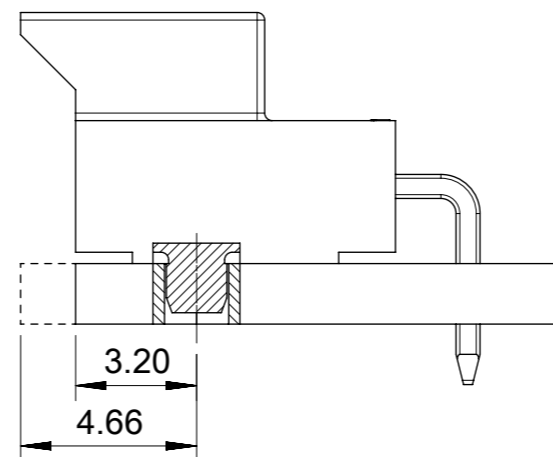
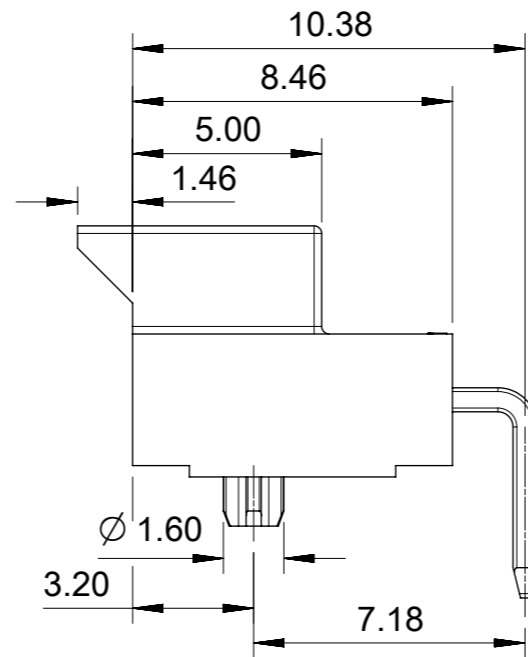
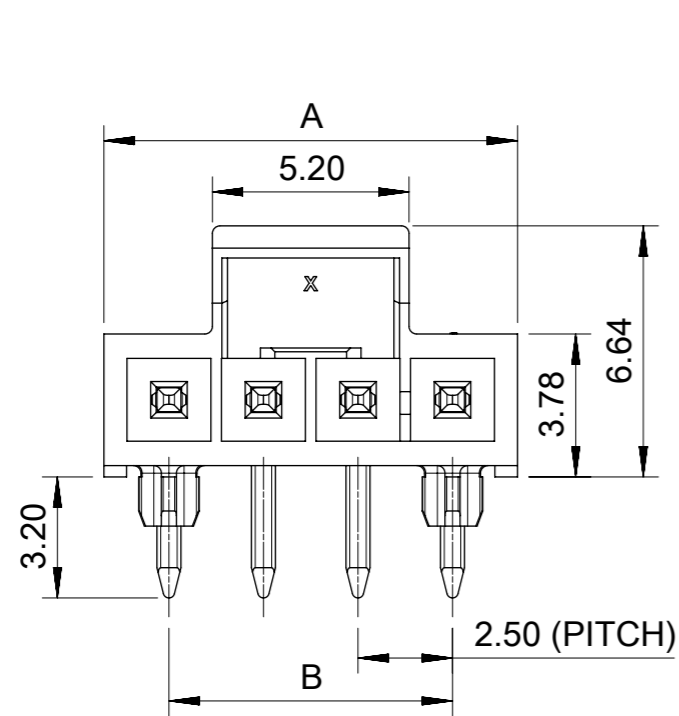
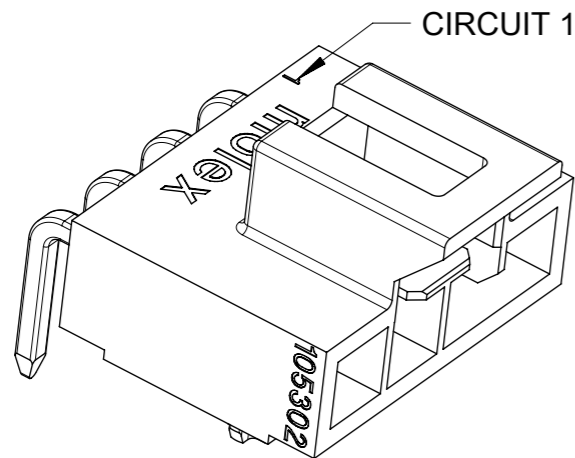
Contact us

Tel: +86-755-8981 8866 Fax: +86-755-8427 6832

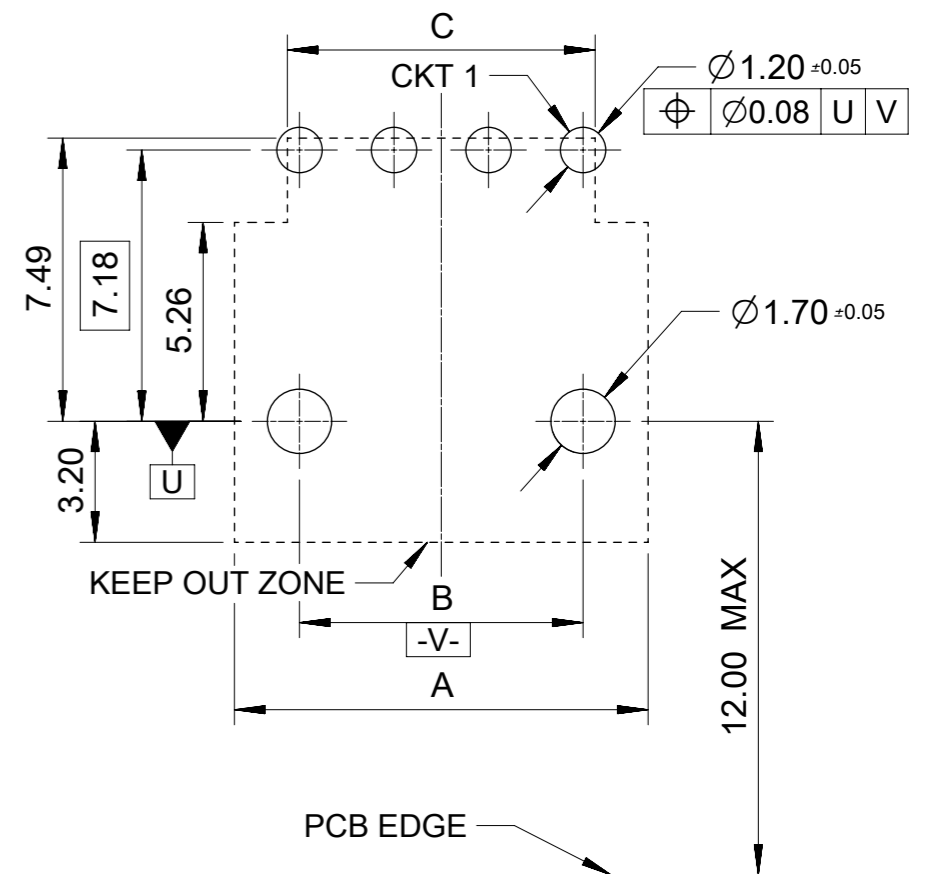
Email & Skype: info@chipsmall.com Web: www.chipsmall.com

Address: A1208, Overseas Decoration Building, #122 Zhenhua RD., Futian, Shenzhen, China





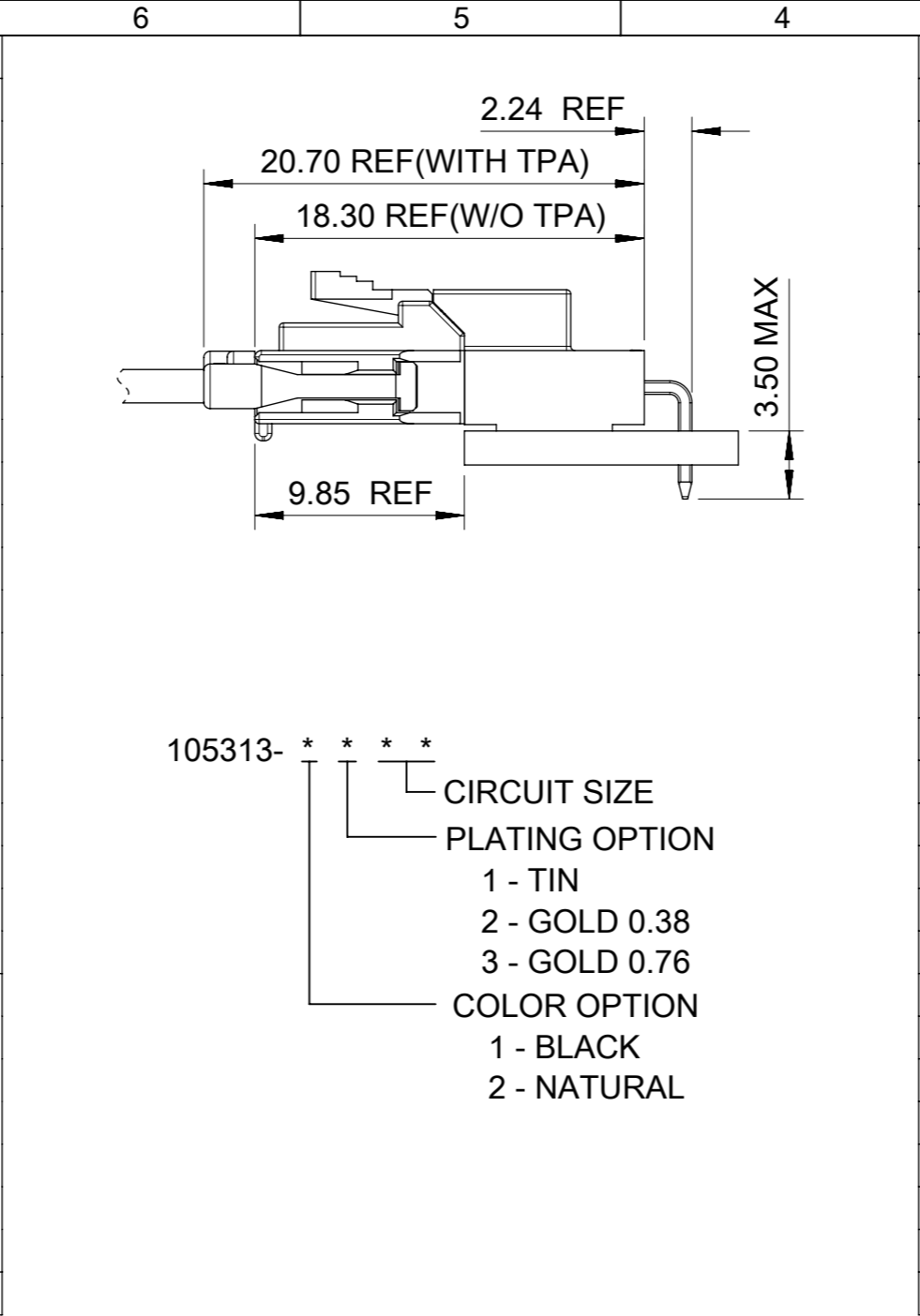
OPTION 1: LATCH FLUSH WITH PCB EDGE.
OPTION 2: HOUSING BODY FLUSH WITH PCB EDGE.



RECOMMENDED PCB(CONNECTOR SIDE VIEW)
THICKNESS=1.6 TO 2.4 MM.

THIS DRAWING CONTAINS INFORMATION THAT IS PROPRIETARY TO MOLEX ELECTRONIC TECHNOLOGIES, LLC AND SHOULD NOT BE USED WITHOUT WRITTEN PERMISSION														
QUALITY SYMBOLS		2018/04/03 2018/04/23 2018/04/23 EC NO: 174537 DRWN: GLLI CHK'D: AYIN REV APPR: AYIN D	GENERAL TOLERANCES (UNLESS SPECIFIED) ANGULAR TOL ± 3.0 ° 4 PLACES ± 3 PLACES ± 0.1 2 PLACES ± 0.2 1 PLACE ± 0.3 0 PLACES ± DRAFT WHERE APPLICABLE MUST REMAIN WITHIN DIMENSIONS	DIMENSION UNITS		SCALE		molex® HEADER OF NANO-FIT, S/R, R/A POWER CONNECTOR						
<div><div>F</div><div>A</div></div> = 0				mm		5:1								
<div><div>F</div><div>C</div></div> = 0						DRWN BY		DATE		PRODUCT CUSTOMER DRAWING				
<div><div>F</div><div>P</div></div> = 0						GLLI		2014/07/16						
<div><div>▽</div></div> = 0						CHK'D BY		DATE						
<div><div>C</div></div> = 0						APPR BY		DATE		SERIESMATERIAL NUMBERCUSTOMER 105313SEE SHEET 2GENERAL MARKET				
<div><div>☒</div></div> = 0						AYIN		2015/04/08						
<div><div>■</div></div> = 0						DRAWING SIZE		THIRD ANGLE PROJECTION						
<div><div>✓</div></div> = 0						A3		<div><div>⌀</div><div>⏏</div></div>		DOCUMENT NUMBER		DOC TYPE	DOC PART	SHEET NUMBER
										SD-105313-100		PSD	000	1 OF 4

9		8			7			
PART NUMBER	DIM 'A'	DIM 'B'	DIM 'C'	CKT SIZE	PLATING	LUBE		
E	105313-1102	5.94	2.50	3.14	2	TIN ▽C	NO	
	105313-1103	8.44	5.00	5.64	3			
	105313-1104	10.94	7.50	8.14	4			
	105313-1105	13.44	10.00	10.64	5			
	105313-1106	15.94	12.50	13.14	6			
	105313-1107	18.44	15.00	15.64	7			
	105313-1108	20.94	17.50	18.14	8			
	105313-1202	5.94	2.50	3.14	2			
D	105313-1203	8.44	5.00	5.64	3	GOLD 0.38		
	105313-1204	10.94	7.50	8.14	4			
	105313-1205	13.44	10.00	10.64	5			
	105313-1206	15.94	12.50	13.14	6			
	105313-1207	18.44	15.00	15.64	7			
	105313-1208	20.94	17.50	18.14	8			
	105313-1302	5.94	2.50	3.14	2			GOLD 0.76
	105313-1303	8.44	5.00	5.64	3			
105313-1304	10.94	7.50	8.14	4				
105313-1305	13.44	10.00	10.64	5				
105313-1306	15.94	12.50	13.14	6				
105313-1307	18.44	15.00	15.64	7				
105313-1308	20.94	17.50	18.14	8				
C	105313-1402	5.94	2.50	3.14	2	GOLD 0.76		
	105313-1403	8.44	5.00	5.64	3			
	105313-1404	10.94	7.50	8.14	4			
	105313-1405	13.44	10.00	10.64	5			
	105313-1406	15.94	12.50	13.14	6			
	105313-1407	18.44	15.00	15.64	7			
	105313-1408	20.94	17.50	18.14	8			
	COLOR: BLACK							



3		2			1		
PART NUMBER	DIM 'A'	DIM 'B'	DIM 'C'	CKT SIZE	PLATING	LUBE	
105313-2102	5.94	2.50	3.14	2	TIN C	NO	
105313-2103	8.44	5.00	5.64	3			
105313-2104	10.94	7.50	8.14	4			
105313-2105	13.44	10.00	10.64	5			
105313-2106	15.94	12.50	13.14	6			
105313-2107	18.44	15.00	15.64	7			
105313-2108	20.94	17.50	18.14	8			
105313-2202	5.94	2.50	3.14	2	GOLD 0.38		NO
105313-2203	8.44	5.00	5.64	3			
105313-2204	10.94	7.50	8.14	4			
105313-2205	13.44	10.00	10.64	5			
105313-2206	15.94	12.50	13.14	6			
105313-2207	18.44	15.00	15.64	7			
105313-2208	20.94	17.50	18.14	8			
105313-2302	5.94	2.50	3.14	2	GOLD 0.76	YES D	
105313-2303	8.44	5.00	5.64	3			
105313-2304	10.94	7.50	8.14	4			
105313-2305	13.44	10.00	10.64	5			
105313-2306	15.94	12.50	13.14	6			
105313-2307	18.44	15.00	15.64	7			
105313-2308	20.94	17.50	18.14	8			
105313-2402	5.94	2.50	3.14	2	GOLD 0.76		YES D
105313-2403	8.44	5.00	5.64	3			
105313-2404	10.94	7.50	8.14	4			
105313-2405	13.44	10.00	10.64	5			
105313-2406	15.94	12.50	13.14	6			
105313-2407	18.44	15.00	15.64	7			
105313-2408	20.94	17.50	18.14	8			
COLOR: NATURAL							

9	8			7		
RELEASE STATUS	P1	RELEASE DATE	2018/04/23	06:47:58	6	5
B						

9	8			7		
RELEASE STATUS	P1	RELEASE DATE	2018/04/23	06:47:58	6	5
A						

QUALITY SYMBOLS

F A

=

0

F C

=

0

F B

=

0

▼

=

0

C

=

0

⊠

=

0

■

=

0

C

=

0

THIS DRAWING CONTAINS INFORMATION THAT IS PROPRIETARY TO MOLEX ELECTRONIC TECHNOLOGIES, LLC AND SHOULD NOT BE USED WITHOUT WRITTEN PERMISSION

2018/04/03
2018/04/23
2018/04/23

EC NO: 174537
DRWN: GLLI
CHK'D: AYIN
APPR: AYIN

D

REV

GENERAL TOLERANCES (UNLESS SPECIFIED)

ANGULAR TOL ± 3.0 °

4 PLACES

±

3 PLACES

±

0.1

2 PLACES

±

0.2

1 PLACE

±

0.3

0 PLACES

±

DRAFT WHERE APPLICABLE
MUST REMAIN
WITHIN DIMENSIONS

DIMENSION UNITS

mm

DRWN BY

GLLI

CHK'D BY

AYIN

APPR BY

AYIN

DRAWING SIZE

A3

SCALE

3:1

DATE

2014/07/16

DATE

2015/04/08

THIRD ANGLE PROJECTION

HEADER OF NANO-FIT, S/R, R/A
POWER CONNECTOR

PRODUCT CUSTOMER DRAWING

SERIES

105313

MATERIAL NUMBER

SEE CHART

CUSTOMER

GENERAL MARKET

DOCUMENT NUMBER

SD-105313-100

DOC TYPE

PSD

DOC PART

000

SHEET NUMBER

2 OF 4

NOTES FOR ALL PARTS

1> MATERIAL:

HOUSING: LCP; TERMINAL: BRASS.

2> PLATING FINISHED:

TERMINAL:

CONTACT AREA: a. TIN 1.5MICRONS MIN; b. GOLD 0.38 MICRONS MIN;
c. GOLD 0.76 MICRONS MIN.

SOLDER AREA: TIN 1.5 MICRONS MIN, UNDER PLATING NICKEL 1.25 MICRONS MIN.

SOLDER CLIP: TIN 2.5 MICRONS MIN, UNDER PLATING NICKEL 1.25 MICRONS MIN.

3> PRODUCT SPECIFICATION: PS-105300-100.

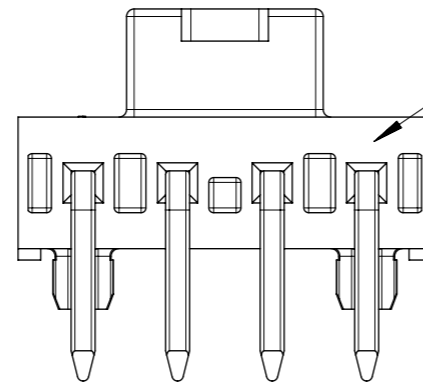
4> PACKAGE: TRAY, PK-105309-400.

5> ALL COMPONENTS AND PRODUCT COMPLIANT TO RoHS DIRECTIVE 2011/65/EU AND ELV DIRECTIVE 2000/53/EC.

6> PRODUCT MATE WITH SERIES OF 105308(RECEPTACLE), 105300(CRIMP TERMINAL).

7> PARTS CONFORM TO CLASS 'B'REQUIREMENTS OF COSMETIC SPECIFICATION PS-45499-002.

8> DISCOLORATION IN THE BANDOLIER PIN CARRIER AREA OF THE PIN IS INHERENT TO THE PLATING PROCESS AND IS DUE TO THE MASKING DEFECT OF THE CARRIER, THIS DISCOLORATION IS IN A NON-FUNCTION AREA OF THE PIN AND WILL NOT AFFECT THE PERFORMANCE OF THE HEADER ASSEMBLY.



THIS DRAWING CONTAINS INFORMATION THAT IS PROPRIETARY TO MOLEX ELECTRONIC TECHNOLOGIES, LLC AND SHOULD NOT BE USED WITHOUT WRITTEN PERMISSION																					
QUALITY SYMBOLS		2018/04/03 2018/04/23 2018/04/23 EC NO: 174537 DRWN: GLLI CHK'D: AYIN APPR: AYIN		GENERAL TOLERANCES (UNLESS SPECIFIED)		DIMENSION UNITS		SCALE		<div>molex®</div>											
<div><div>FA</div>= 0</div> <div><div>F</div>= 0</div> <div><div>FB</div>= 0</div> <div><div>▽</div>= 0</div> <div><div>C</div>= 0</div> <div><div>☒</div>= 0</div> <div><div>■</div>= 0</div> <div><div>C</div>= 0</div>						mm		NTS													
				ANGULAR TOL ± 3.0 °				DRWN BY		DATE		HEADER OF NANO-FIT, S/R, R/A POWER CONNECTOR									
								GLLI		2015/05/29											
				4 PLACES		±		CHK'D BY		DATE							PRODUCT CUSTOMER DRAWING				
				3 PLACES		± 0.1															
				2 PLACES		± 0.2		APPR BY		DATE		<div>SERIES</div> <div>105313</div> <div>MATERIAL NUMBER</div> <div>SEE SHEET 2</div> <div>CUSTOMER</div> <div>GENERAL MARKET</div>									
				1 PLACE		± 0.3											JALEXANDER		2016/04/27		
				0 PLACES		±															
				DRAFT WHERE APPLICABLE MUST REMAIN WITHIN DIMENSIONS				DRAWING SIZE		THIRD ANGLE PROJECTION		<div>A3</div> <div><div><div></div></div><div><div></div></div></div>									
D		REV		<div>DOCUMENT NUMBER</div> <div>SD-105313-100</div> <div>DOC TYPE</div> <div>PSD</div> <div>DOC PART</div> <div>000</div> <div>SHEET NUMBER</div> <div>4 OF 4</div>																	