



Chipsmall Limited consists of a professional team with an average of over 10 year of expertise in the distribution of electronic components. Based in Hongkong, we have already established firm and mutual-benefit business relationships with customers from,Europe,America and south Asia,supplying obsolete and hard-to-find components to meet their specific needs.

With the principle of “Quality Parts,Customers Priority,Honest Operation,and Considerate Service”,our business mainly focus on the distribution of electronic components. Line cards we deal with include Microchip,ALPS,ROHM,Xilinx,Pulse,ON,Everlight and Freescale. Main products comprise IC,Modules,Potentiometer,IC Socket,Relay,Connector.Our parts cover such applications as commercial,industrial, and automotives areas.

We are looking forward to setting up business relationship with you and hope to provide you with the best service and solution. Let us make a better world for our industry!



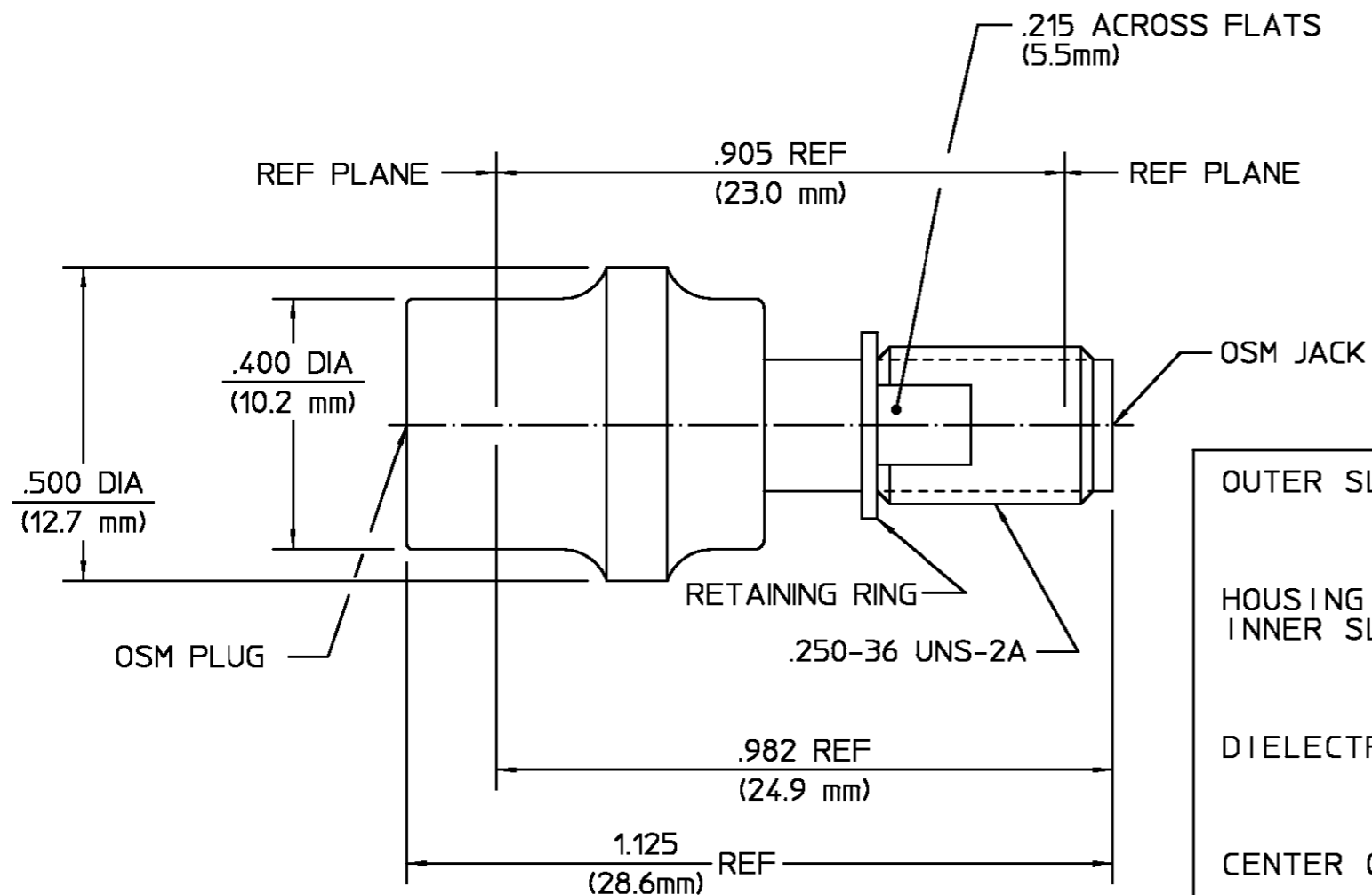
Contact us

Tel: +86-755-8981 8866 Fax: +86-755-8427 6832

Email & Skype: info@chipsmall.com Web: www.chipsmall.com

Address: A1208, Overseas Decoration Building, #122 Zhenhua RD., Futian, Shenzhen, China





REVISIONS			
REV	DESCRIPTION	DATE	APPROVED
01 ₀	RELEASED	2/28/89	PCW
02 ₀	RELEASED: WAS 2099-5103-02	M.Y. 4-7-89	PCW
03 ₀	1.125REF WAS 1.205REF PER ECN 89-0542	M.Y. 5-24-89	L.ROSS 5-24-89
03 ₁	ADDED RETAINING RING PER ECN 89-0786-2	M.Y. 8-7-89	KCM

OUTER SLEEVE	STAINLESS STEEL PER ASTM-A484 AND ASTM-A582, TYPE 303	PASSIVATE PER ASTM-A380
HOUSING INNER SLEEVE	BERYLLIUM COPPER PER QQ-C-530	NICKEL PLATE PER QQ-N-290 OVER COPPER PLATE PER MIL-C-14550
DIELECTRIC	TFE FLUOROCARBON PER MIL-P-19468 AND FED SPEC L-P-403	N/A
CENTER CONTACT	BERYLLIUM COPPER PER QQ-C-530, ALLOY 173	GOLD PLATE PER MIL-G-45204 OVER COPPER PLATE PER MIL-C-14550
RETAINING RING	CARBON SPRING STEEL	NICKEL PLATE PER QQ-N-290 OVER COPPER PLATE PER MIL-C-14550
COMPONENT	MATERIAL	FINISH

UNLESS OTHERWISE SPECIFIED DIMENSIONS ARE IN INCHES TOLERANCE ON FRAC. DEC. ANGLES ± 1/64 ± .005 ± °	DRAWN BY K.C. MAHER 2/28/89	AMP Incorporated 140 Fourth Avenue Waltham, MA 02451-7599
	CHECKED BY C. WARD 2/28/89	
APPROVED BY PCW 2/28/89		
These drawings and specifications are the property of Omni Spectra Incorporated and shall not be reproduced or copied or used in whole or in part as the basis for the manufacture or sale of item(s) without written permission.	USE ASS'Y PROCEDURE	TITLE OSM TO OSM PUSH ON JACK TO PLUG ADAPTER
	NO. AP. N/A	SIZE B
		CODE IDENT NO. 26805
		2082-2249-02
		REV 03 ₁
		SCALE 4:1
		SHEET 1 OF 1

NOTES:
1. CAPTURED CENTER CONTACT