



Chipsmall Limited consists of a professional team with an average of over 10 year of expertise in the distribution of electronic components. Based in Hongkong, we have already established firm and mutual-benefit business relationships with customers from,Europe,America and south Asia,supplying obsolete and hard-to-find components to meet their specific needs.

With the principle of “Quality Parts,Customers Priority,Honest Operation,and Considerate Service”,our business mainly focus on the distribution of electronic components. Line cards we deal with include Microchip,ALPS,ROHM,Xilinx,Pulse,ON,Everlight and Freescale. Main products comprise IC,Modules,Potentiometer,IC Socket,Relay,Connector.Our parts cover such applications as commercial,industrial, and automotives areas.

We are looking forward to setting up business relationship with you and hope to provide you with the best service and solution. Let us make a better world for our industry!



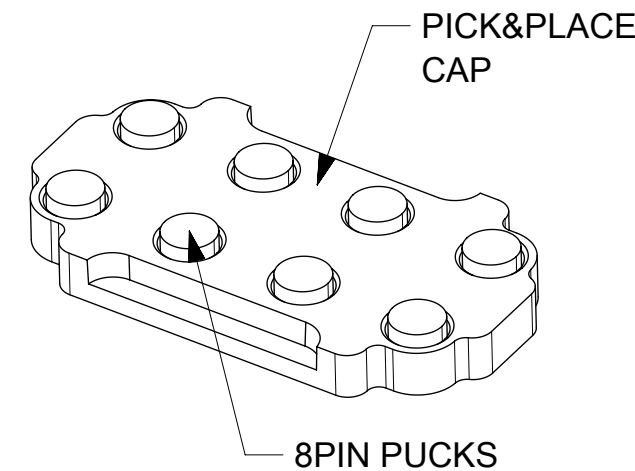
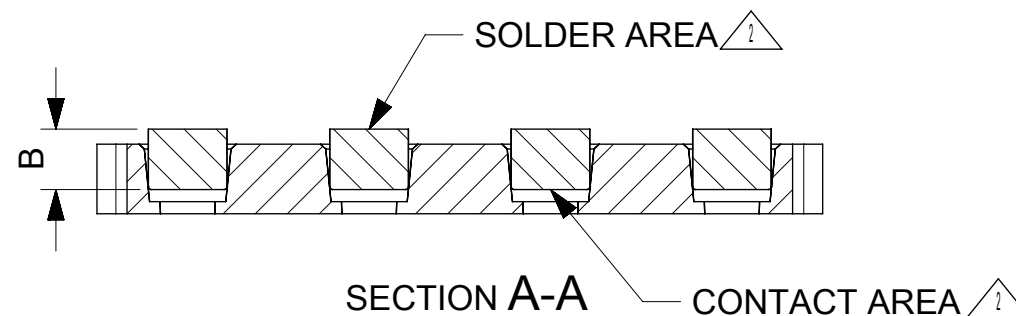
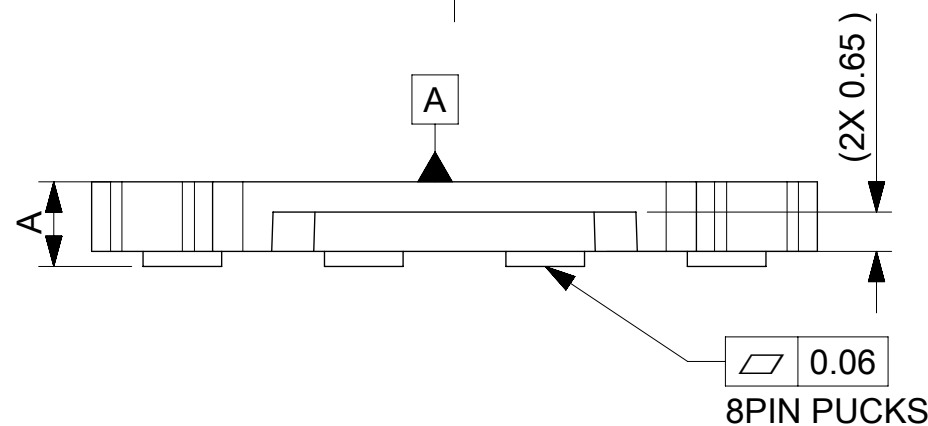
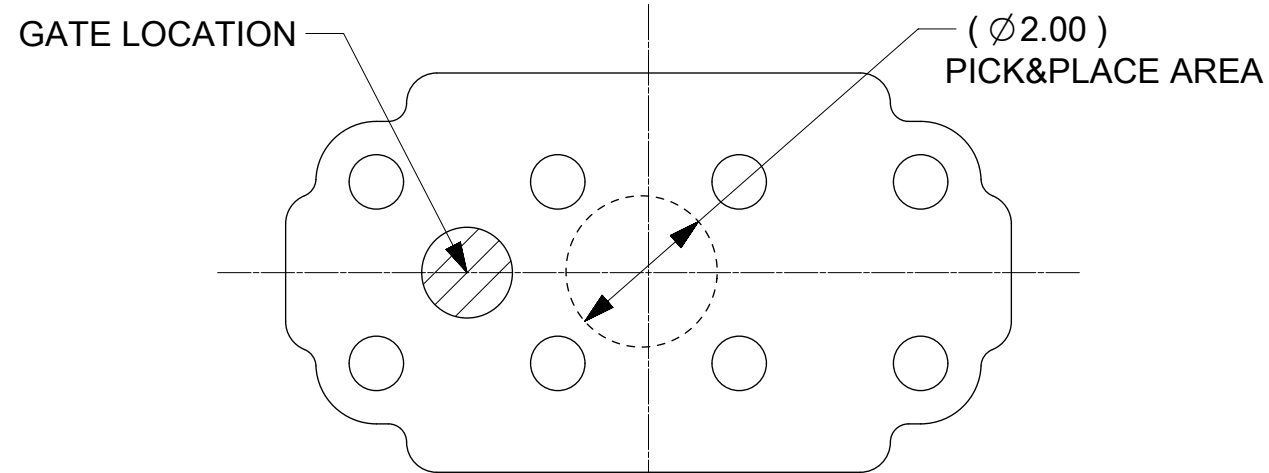
Contact us

Tel: +86-755-8981 8866 Fax: +86-755-8427 6832

Email & Skype: info@chipsmall.com Web: www.chipsmall.com

Address: A1208, Overseas Decoration Building, #122 Zhenhua RD., Futian, Shenzhen, China





NOTES:

1. MATERIAL :

CARRIER HOUSING: LCP, E130i

METAL PUCKS : PHOS-BRONZE C5210

2. FINISH:

a). NICKEL PLATING:

UNDERPLATING SHALL BE FULL Ni COVERAGE WITH MINIMUM OF 1.25 µM Ni WITHIN CONTACT AREA AND SOLDER AREA.

b). CONTACT AREA:

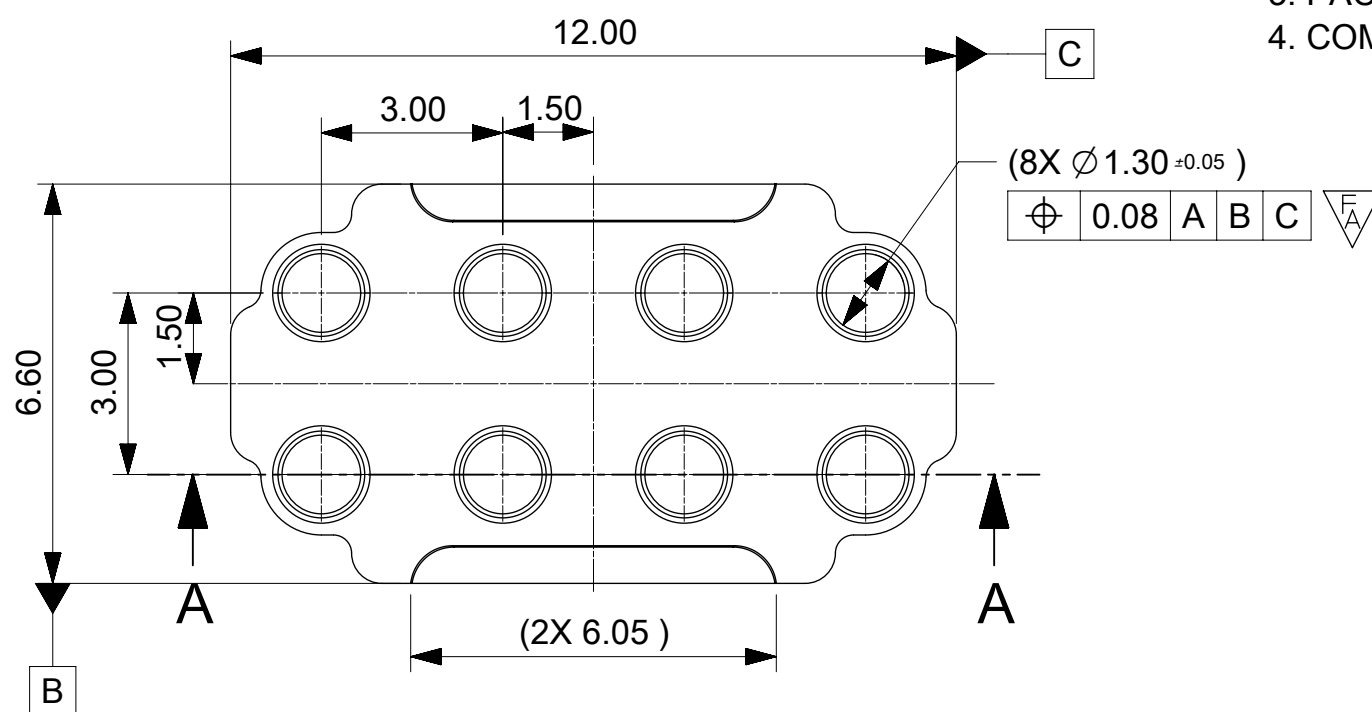
MINIMUM OF 0.1 µM Au OVER FULL SURFACE AND MINIMUM OF 0.76 µM Au WITHIN 0.6mm INTERNAL DIAMETER.

c). SOLDER AREA:

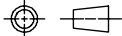
MINIMUM OF 0.05 µM GOLD FLASH WITHIN 1.0MM INTERNAL DIAMETER OF PCB SOLDER AREA.

3. PACKAGE: TAPE AND REEL, DETAIL SEE DRAWING PK-105402-002.

4. COMPLIANT TO RoHS DIRECTIVE 2011/65/EU/AND ELV DIRECTIVE 2000/53 EC.



DESCRIPTION	PART NO.	DIM-A	DIM-B
SHORTER	1054020022	1.45	1.00
TALLER	1054020032	1.90	1.44

THIS DRAWING CONTAINS INFORMATION THAT IS PROPRIETARY TO MOLEX ELECTRONIC TECHNOLOGIES, LLC AND SHOULD NOT BE USED WITHOUT WRITTEN PERMISSION													
EC NO: 108039 DRWN: YXZHENG CHK'D: AYIN APPR: AYIN	2016/09/08 2016/09/08 2017/02/07	GENERAL TOLERANCES (UNLESS SPECIFIED)		DIMENSION UNITS		SCALE		<div>molex®</div>					
				MM		8:1							
		ANGULAR TOL ± °		DRWN BY		DATE		8PIN CTKS 105402 CONN.					
				YXZHENG		2016/03/29							
		4 PLACES ±		CHK'D BY		DATE							
		3 PLACES ±		YXZHENG		2016/05/24							
		2 PLACES ± 0.1		APPR BY		DATE		PRODUCT CUSTOMER DRAWING					
		1 PLACE ± 0.15		AYIN		2016/05/26							
		0 PLACES ±		DRAWING SIZE		THIRD ANGLE PROJECTION		SERIES		MATERIAL NUMBER		CUSTOMER	
		DRAFT WHERE APPLICABLE MUST REMAIN WITHIN DIMENSIONS		A3				105402		SEE TABLE		GENERAL MARKET	
DOCUMENT NUMBER								DOC TYPE		DOC PART		SHEET NUMBER	
SD-105402-002								PSD		000		1 OF 1	
A	REV												

RELEASE STATUS	RELEASE DATE
----------------	--------------