



Chipsmall Limited consists of a professional team with an average of over 10 year of expertise in the distribution of electronic components. Based in Hongkong, we have already established firm and mutual-benefit business relationships with customers from,Europe,America and south Asia,supplying obsolete and hard-to-find components to meet their specific needs.

With the principle of “Quality Parts,Customers Priority,Honest Operation,and Considerate Service”,our business mainly focus on the distribution of electronic components. Line cards we deal with include Microchip,ALPS,ROHM,Xilinx,Pulse,ON,Everlight and Freescale. Main products comprise IC,Modules,Potentiometer,IC Socket,Relay,Connector.Our parts cover such applications as commercial,industrial, and automotives areas.

We are looking forward to setting up business relationship with you and hope to provide you with the best service and solution. Let us make a better world for our industry!



Contact us

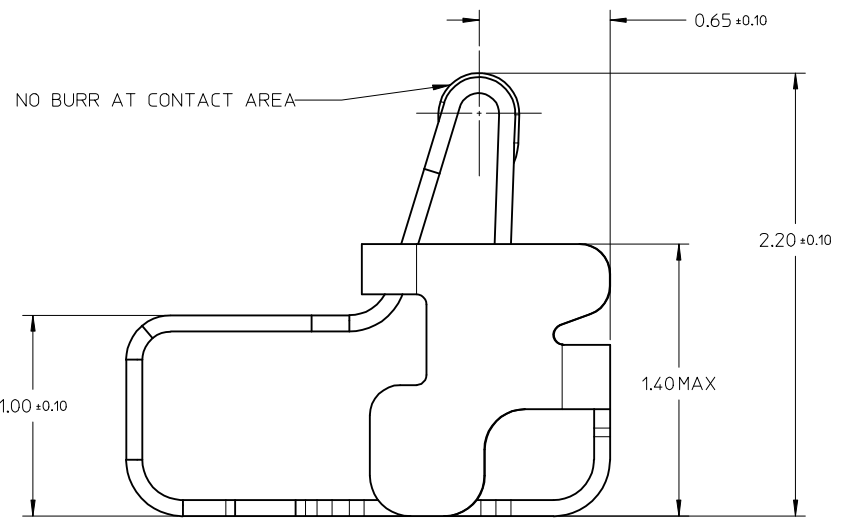
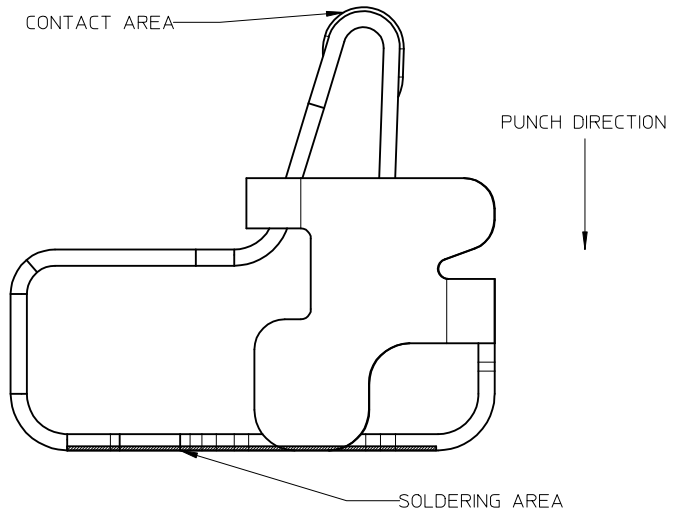
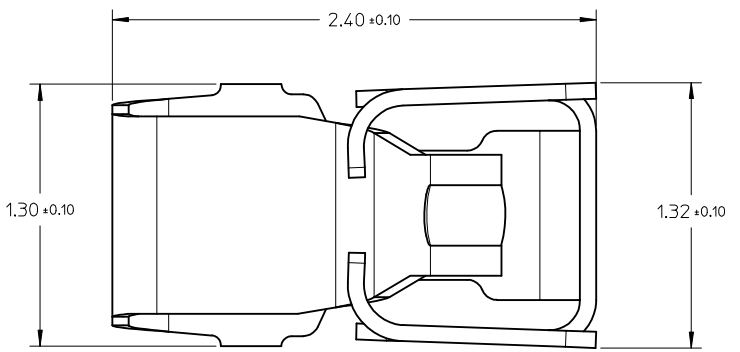
Tel: +86-755-8981 8866 Fax: +86-755-8427 6832

Email & Skype: info@chipsmall.com Web: www.chipsmall.com

Address: A1208, Overseas Decoration Building, #122 Zhenhua RD., Futian, Shenzhen, China



10 9 8 7 6 5 4 3 2 1



- NOTES:
1. MATERIAL: STAINLESS STEEL
 2. FINISH:
 - NI UNDER PLATING OVERALL: 1.25um MINIMUM
 - SOLDERING AREA: GOLD FLASH
 - CONTACT AREA: 0.25um Au MINIMUM
 3. COMPONENT UN-COMPRESSED HEIGHT: 2.20mm
COMPONENT WORKING RANGE: 1.40mm~2.00mm
 4. CURRENT: 1.5Amps MAXIMUM
 5. CONTACT RESISTANCE:
 - INITIAL: 75mOHM MAXIMUM
 - AFTER GROUP TEST: 100mOHM MAXIMUM
 6. CONTACT FORCE:
 - 0.2N MINIMUM AT 2.00mm POSITION
 7. PRODUCT COMPLIANT TO ROHS DIRECTIVE 2011/65/EU AND ELV DIRECTIVE 2003/53/EC

F

E

D

C

B

A

PROPOSAL EC NO: SH2016-0120 DRW: RL109 CHKD: APPR: RZHANG REV: A	DESCRIPTION 2015/10/26 2015/12/03	QUALITY SYMBOLS	GENERAL TOLERANCES (UNLESS SPECIFIED)		DIMENSION STYLE MM ONLY		SCALE 40:1	DESIGN UNITS METRIC	THIRD ANGLE PROJECTION	
		$F_A=0$ $F_C=0$ $F_P=0$	mm INCH 4 PLACES ± --- ± --- 3 PLACES ± --- ± --- 2 PLACES ± 0.15 ± --- 1 PLACE ± 0.20 ± --- 0 PLACE ± --- ± ---	DRAWN BY RL109	DATE 2015/04/03	TITLE SPRING FINGER WORKING RANGE 1.40MM~2.00MM				
		ANGULAR ± 3 ° DRAFT WHERE APPLICABLE MUST REMAIN WITHIN DIMENSIONS	APPROVED BY RZHANG DATE 2015/12/03	MATERIAL NO. 1054390005		DOCUMENT NO. SD-105439-500				
		SIZE A3		THIS DRAWING CONTAINS INFORMATION THAT IS PROPRIETARY TO MOLEX INCORPORATED AND SHOULD NOT BE USED WITHOUT WRITTEN PERMISSION						

9 8 7 6 5 4 3 2 1

10 9 8 7 6 5 4 3 2 1

F

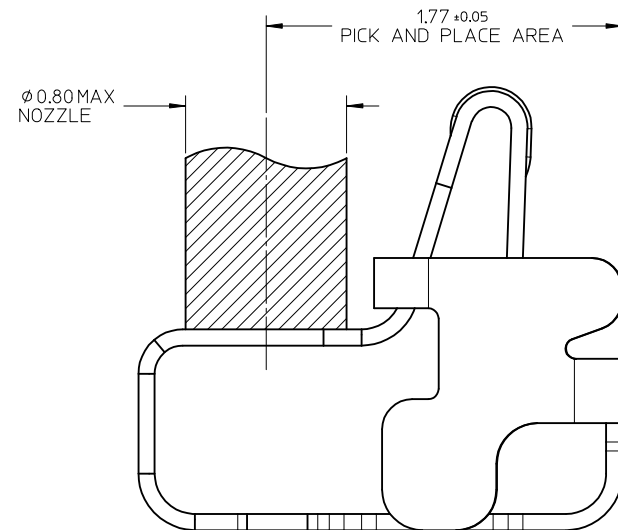
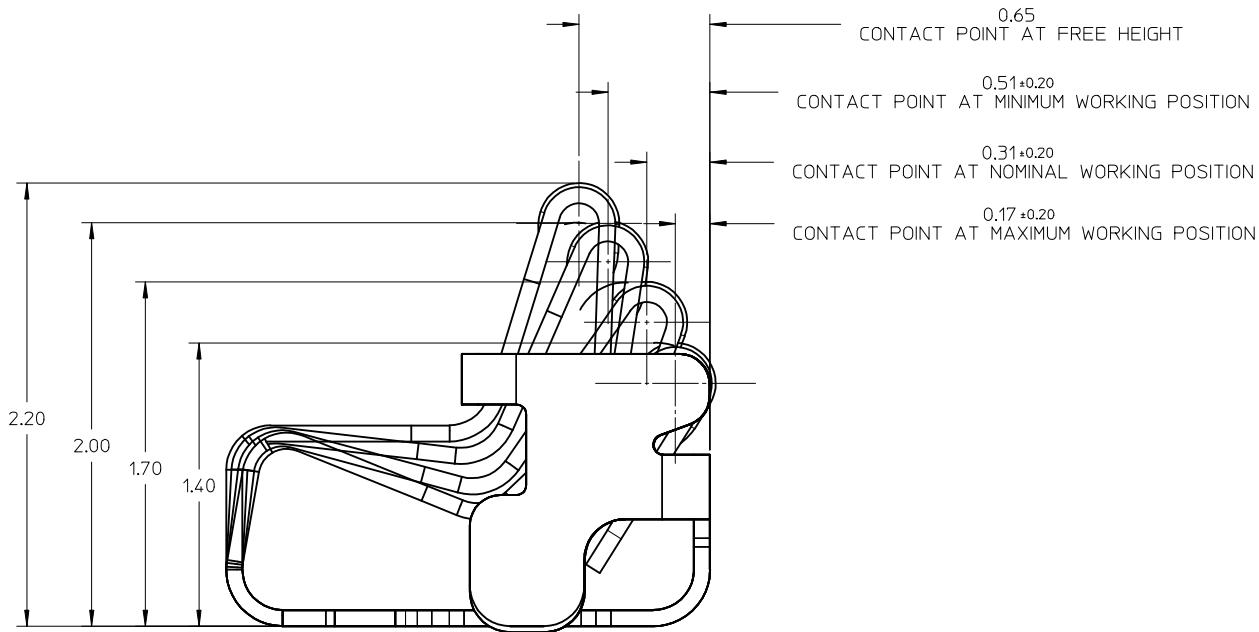
E

D

C

B

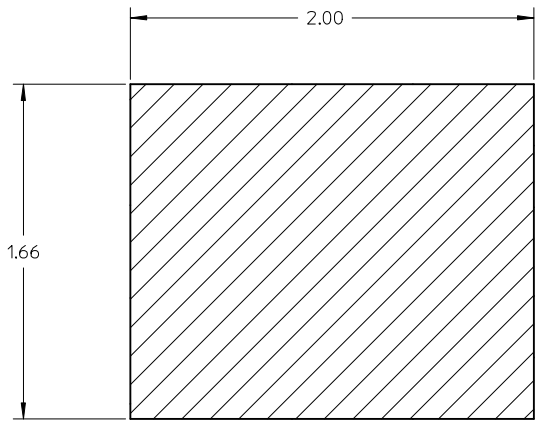
A



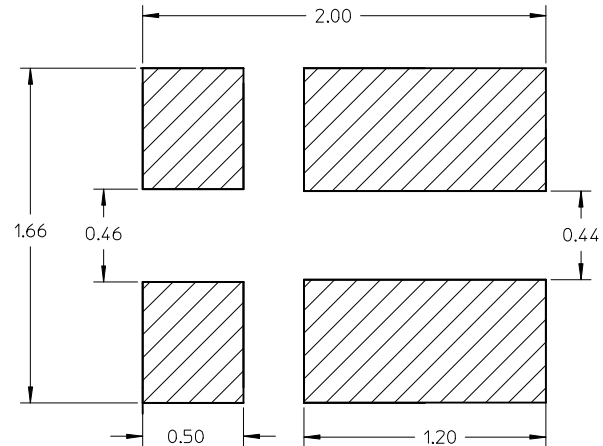
PROPOSAL EC NO: SH2016-0120 DRW:RL109 CHKD: APPR:RZHANG 2015/10/26 2015/12/03	QUALITY SYMBOLS	GENERAL TOLERANCES (UNLESS SPECIFIED)		DIMENSION STYLE	SCALE	DESIGN UNITS	THIRD ANGLE PROJECTION
	$F_A=0$	mm	INCH	MM ONLY	40:1	METRIC	
	$F_G=0$	4 PLACES ± --- ± ---	DRAWN BY	DATE	TITLE		
	$F_P=0$	3 PLACES ± --- ± ---	RL109	2015/04/03	SPRING FINGER WORKING RANGE 1.40MM~2.00MM		
	2 PLACES ± 0.15 ± ---	CHECKED BY	DATE	2 OF 3			
	1 PLACE ± 0.20 ± ---	APPROVED BY	DATE	SD-105439-500			
	0 PLACE ± --- ± ---	RZHANG	2015/12/03	molex			
	ANGULAR ± 3 °	MATERIAL NO.	1054390005	DOCUMENT NO.			
	DRAFT WHERE APPLICABLE MUST REMAIN WITHIN DIMENSIONS	SIZE	A3	THIS DRAWING CONTAINS INFORMATION THAT IS PROPRIETARY TO MOLEX INCORPORATED AND SHOULD NOT BE USED WITHOUT WRITTEN PERMISSION			

9 8 7 6 5 4 3 2 1

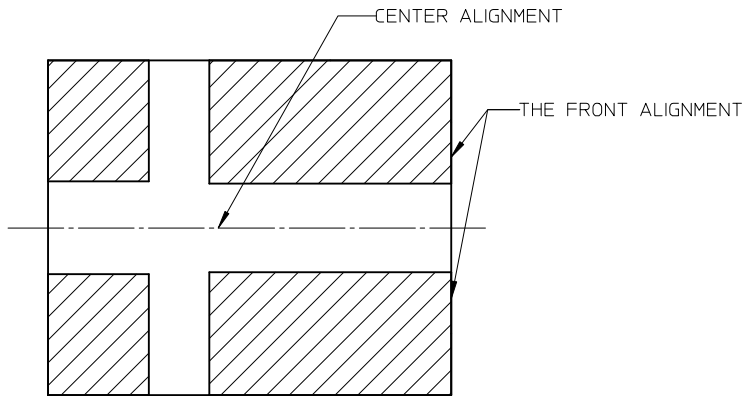
10 9 8 7 6 5 4 3 2 1



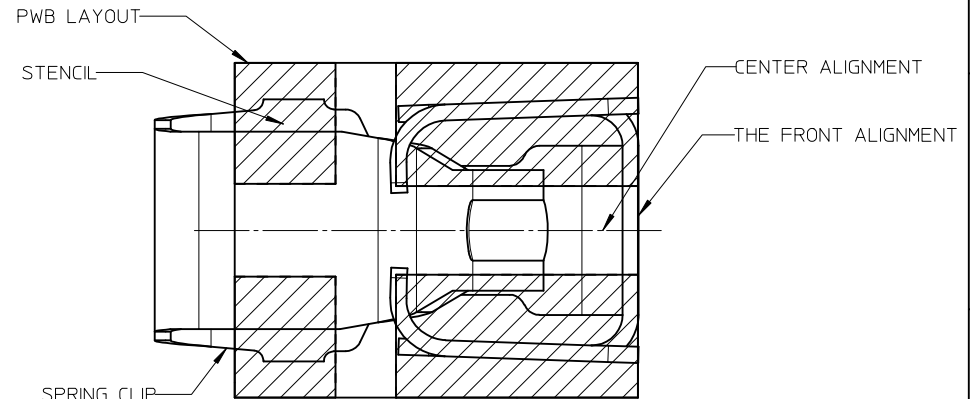
RECOMMENDED PWB LAYOUT
TOLERANCE±0.05



RECOMMENDED STENCIL
TOLERANCE±0.03



RELATIVE LOCATION: PWB LAYOUT VS STENCIL



RELATIVE LOCATION: PWB LAYOUT VS SPRING CLIP

PROPOSAL EC NO: SH2016-0120 DRWNR:RL109 CHKD: APPR:RZHANG 2015/10/26 2015/12/03	QUALITY SYMBOLS $F_A=0$ $F_G=0$ $F_P=0$	GENERAL TOLERANCES (UNLESS SPECIFIED) <table border="1"> <thead> <tr> <th></th> <th>mm</th> <th>INCH</th> </tr> </thead> <tbody> <tr> <td>4 PLACES</td> <td>± ---</td> <td>± ---</td> </tr> <tr> <td>3 PLACES</td> <td>± ---</td> <td>± ---</td> </tr> <tr> <td>2 PLACES</td> <td>± 0.15</td> <td>± ---</td> </tr> <tr> <td>1 PLACE</td> <td>± 0.20</td> <td>± ---</td> </tr> <tr> <td>0 PLACE</td> <td>± ---</td> <td>± ---</td> </tr> </tbody> </table>		mm	INCH	4 PLACES	± ---	± ---	3 PLACES	± ---	± ---	2 PLACES	± 0.15	± ---	1 PLACE	± 0.20	± ---	0 PLACE	± ---	± ---	DIMENSION STYLE MM ONLY DRAWN BY: RL109 DATE: 2015/04/03 CHECKED BY: DATE: APPROVED BY: RZHANG DATE: 2015/12/03	SCALE 40:1	DESIGN UNITS METRIC	THIRD ANGLE PROJECTION
		mm	INCH																					
	4 PLACES	± ---	± ---																					
	3 PLACES	± ---	± ---																					
2 PLACES	± 0.15	± ---																						
1 PLACE	± 0.20	± ---																						
0 PLACE	± ---	± ---																						
	ANGULAR ± 3 ° DRAFT WHERE APPLICABLE MUST REMAIN WITHIN DIMENSIONS	MATERIAL NO. 1054390005	TITLE SPRING FINGER WORKING RANGE 1.40MM~2.00MM	DOCUMENT NO. SD-105439-500	SHEET NO. 3 OF 3																			
		SIZE A3	THIS DRAWING CONTAINS INFORMATION THAT IS PROPRIETARY TO MOLEX INCORPORATED AND SHOULD NOT BE USED WITHOUT WRITTEN PERMISSION																					
			molex																					

9 8 7 6 5 4 3 2 1