



Chipsmall Limited consists of a professional team with an average of over 10 year of expertise in the distribution of electronic components. Based in Hongkong, we have already established firm and mutual-benefit business relationships with customers from,Europe,America and south Asia,supplying obsolete and hard-to-find components to meet their specific needs.

With the principle of “Quality Parts,Customers Priority,Honest Operation,and Considerate Service”,our business mainly focus on the distribution of electronic components. Line cards we deal with include Microchip,ALPS,ROHM,Xilinx,Pulse,ON,Everlight and Freescale. Main products comprise IC,Modules,Potentiometer,IC Socket,Relay,Connector.Our parts cover such applications as commercial,industrial, and automotives areas.

We are looking forward to setting up business relationship with you and hope to provide you with the best service and solution. Let us make a better world for our industry!



Contact us

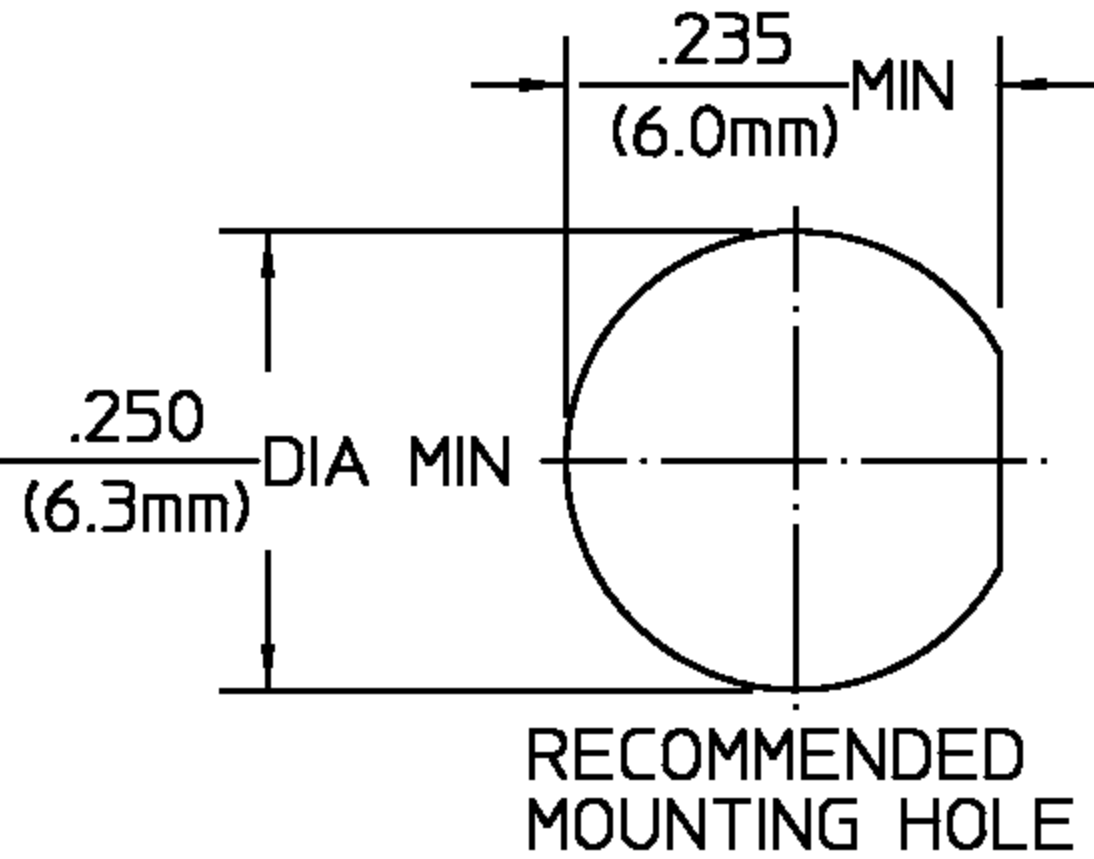
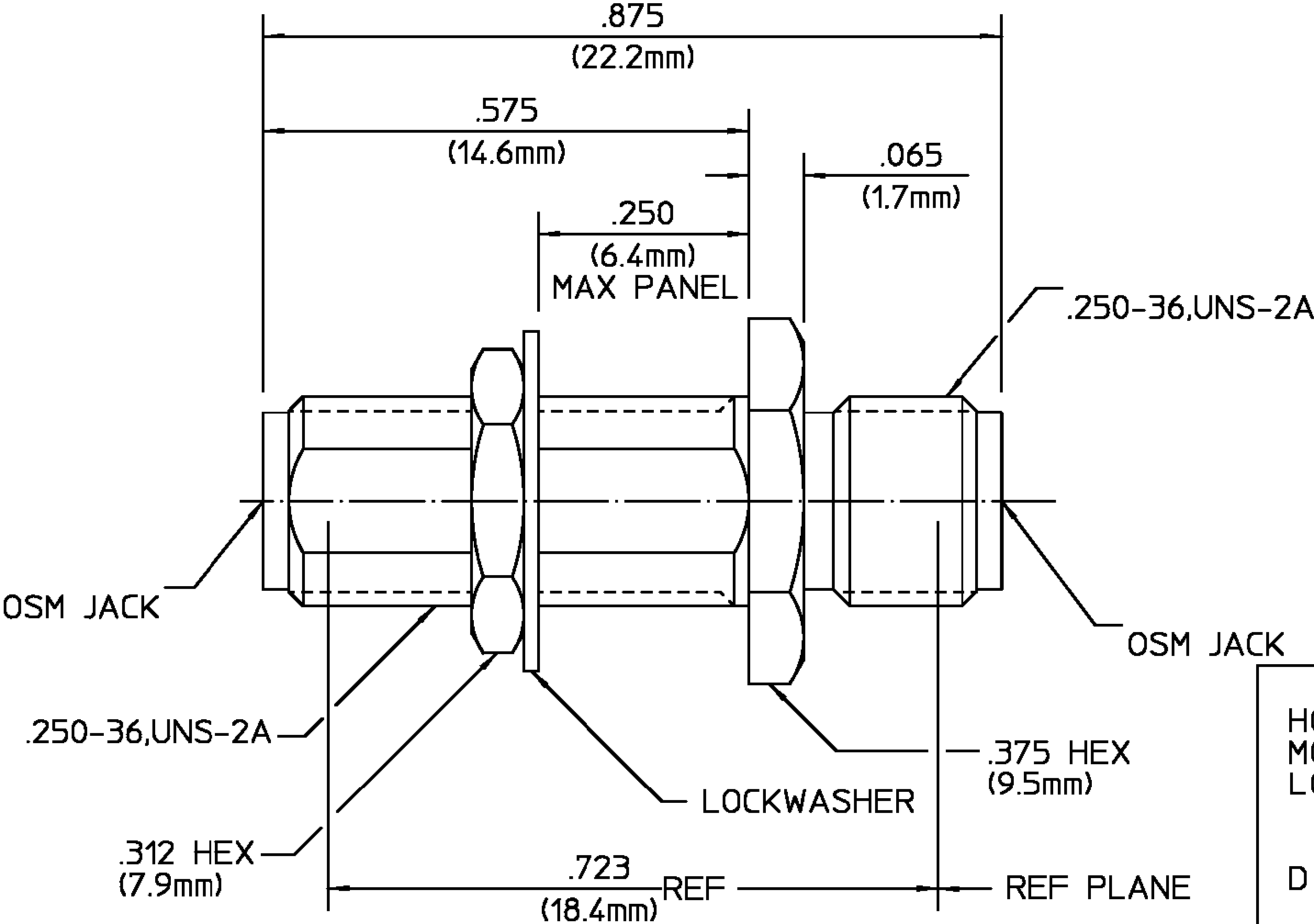
Tel: +86-755-8981 8866 Fax: +86-755-8427 6832

Email & Skype: info@chipsmall.com Web: www.chipsmall.com


Address: A1208, Overseas Decoration Building, #122 Zhenhua RD., Futian, Shenzhen, China



REVISIONS			
REV	DESCRIPTION	DATE	APPROVED
A1	REVISED PER ECO-11-005294	14APR11	HMR



- NOTES:
1. CAPTURED CENTER CONTACT

HOUSING MOUNTING NUT LOCKWASHER	STAINLESS STEEL PER ASTM-A484 AND ASTM- A582, TYPE 303	GOLD PLATE PER MIL-G-45204 OVER NICKLE PLATE PER QQ-N-290
DIELECTRIC	TFE FLUOROCARBON PER MIL-P-19468 AND FED SPEC L-P-403	N/A
CENTER CONTACT	BERYLLIUM COPPER PER QQ-C-530,ALLOY 173	GOLD PLATE PER MIL-G-45204 OVER COPPER PLATE PER MIL-C-14550
COMPONENT	MATERIAL	FINISH
<div><div><div>UNLESS OTHERWISE SPECIFIED DIMENSIONS ARE IN INCHES TOLERANCE ON</div><div><div>FRAC.</div><div>DEC.</div><div>ANGLES</div></div><div><div>± 1/64</div><div>±.005</div><div>± 1°</div></div></div><div><div>DRAWN BY E.F.HOYLE</div><div>DATE 1/25/89</div></div><div><div>CHECKED BY L.ROSS</div><div>2-10-89</div></div><div><div>APPD BY</div><div></div></div></div> <div><div>TE Connectivity</div></div>		
<div><div><div><div>✓</div><div>USE ASS'Y PROCEDURE 2/22/89</div></div><div><div>NO. A.P.</div><div>N/A</div></div></div></div>		<div><div>TITLE</div><div>BULKHEAD FEEDTHROUH JACK TO JACK ADAPTER</div></div> <div><div><div>SIZE B</div><div>CODE IDENT NO. 26805</div><div>C - 1054868-1</div><div>REV A1</div></div><div><div>SCALE</div><div>5:1</div></div><div><div>SHEET 1 OF 1</div></div></div>