



Chipsmall Limited consists of a professional team with an average of over 10 year of expertise in the distribution of electronic components. Based in Hongkong, we have already established firm and mutual-benefit business relationships with customers from,Europe,America and south Asia,supplying obsolete and hard-to-find components to meet their specific needs.

With the principle of "Quality Parts,Customers Priority,Honest Operation,and Considerate Service",our business mainly focus on the distribution of electronic components. Line cards we deal with include Microchip,ALPS,ROHM,Xilinx,Pulse,ON,Everlight and Freescale. Main products comprise IC,Modules,Potentiometer,IC Socket,Relay,Connector.Our parts cover such applications as commercial,industrial, and automotives areas.

We are looking forward to setting up business relationship with you and hope to provide you with the best service and solution. Let us make a better world for our industry!



## Contact us

Tel: +86-755-8981 8866 Fax: +86-755-8427 6832

Email & Skype: [info@chipsmall.com](mailto:info@chipsmall.com) Web: [www.chipsmall.com](http://www.chipsmall.com)

Address: A1208, Overseas Decoration Building, #122 Zhenhua RD., Futian, Shenzhen, China



REV.	ECN NO.	MODIFY CONTENT	DATE
A	ESJ00601.045	initial	04/18/2006
B	ESJ00604.055	add shell dimension	04/18/2006

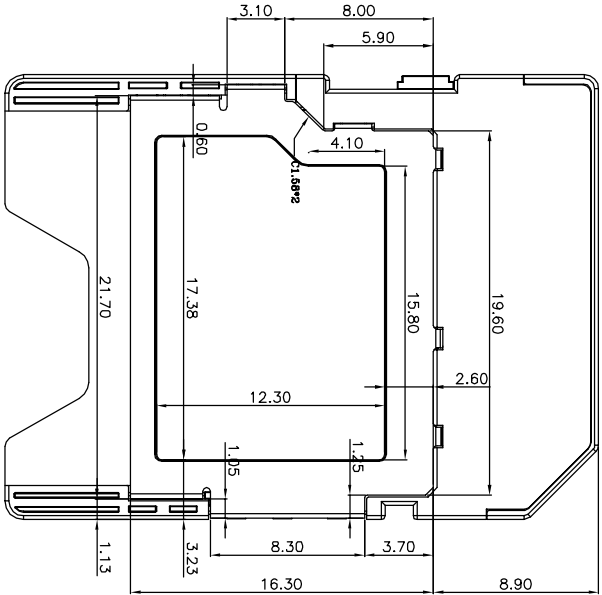
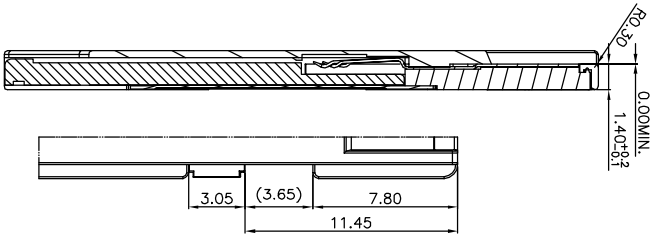
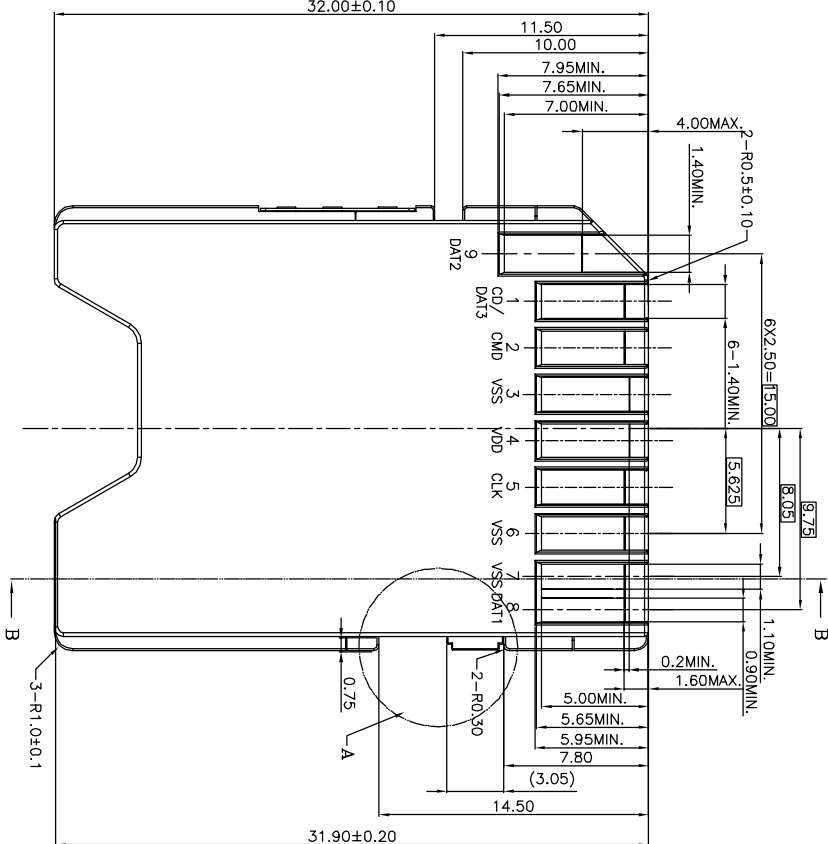
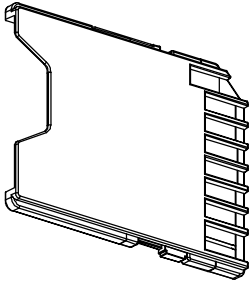
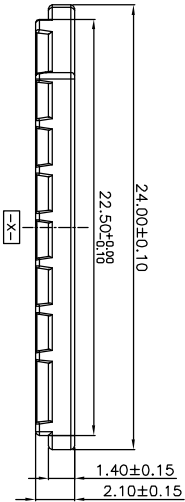
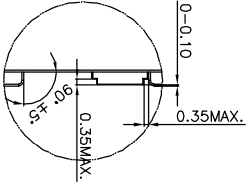
NOTE:

1. Contact Resistance: 100mΩ Max.
2. Dielectric Withstanding Voltage: 500VAC Max With 1 Minute
3. Insulation Resistance: 1000 MΩ Min.
4. Current Rating: 1 A AC/DC Max.
5. Rated Voltage: 500 V RMS Min.
6. Mini SD Card extraction force: 1.5N MIN.
7. Durability: 10,000 mating cycles.
8. Operating Temperature: -25℃ ~ +85℃
9. Storage Temperature: -45℃ ~ +85℃

THE PART NUMBER:

106-00120-\*\*-\*\*

- 10: Selective gold 1u" on contact area over nickel plated 80u"  
11: Selective gold 3u" on contact area over nickel plated 80u"  
12: Selective gold 5u" on contact area over nickel plated 80u"  
13: Selective gold 10u" on contact area over nickel plated 80u"  
14: Selective gold 15u" on contact area over nickel plated 80u"  
15: Selective gold 30u" on contact area over nickel plated 80u"  
16: Selective gold 50u" on contact area over nickel plated 80u"



GENERAL TOLERANCE

FILE NO.

106-00120

PART NO.

106-00120-\*\*-\*\*

DRAWN

WYX

MATERIAL

04/18/2006

SCALE

NO SCALE

X.±0.50

X.±5°

REV.

B

TITLE

MINISD Adapter(shell)

CHECKED

Terry

DATE

04/18/2006

UNIT

MM

.X±0.38

.X±2°

SIZE

A4

SHEET

1 OF 1

APPROVED

Jeffrey

Amphenol Shouhmin Industry

.XX±0.25

.XX±1°

A4

1

2

3

4

5

6

7

8

9