



Chipsmall Limited consists of a professional team with an average of over 10 year of expertise in the distribution of electronic components. Based in Hongkong, we have already established firm and mutual-benefit business relationships with customers from,Europe,America and south Asia,supplying obsolete and hard-to-find components to meet their specific needs.

With the principle of “Quality Parts,Customers Priority,Honest Operation,and Considerate Service”,our business mainly focus on the distribution of electronic components. Line cards we deal with include Microchip,ALPS,ROHM,Xilinx,Pulse,ON,Everlight and Freescale. Main products comprise IC,Modules,Potentiometer,IC Socket,Relay,Connector.Our parts cover such applications as commercial,industrial, and automotives areas.

We are looking forward to setting up business relationship with you and hope to provide you with the best service and solution. Let us make a better world for our industry!



Contact us

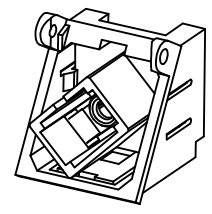
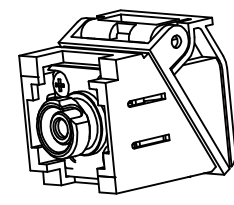
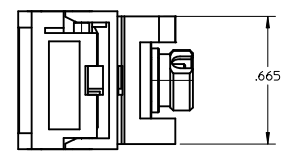
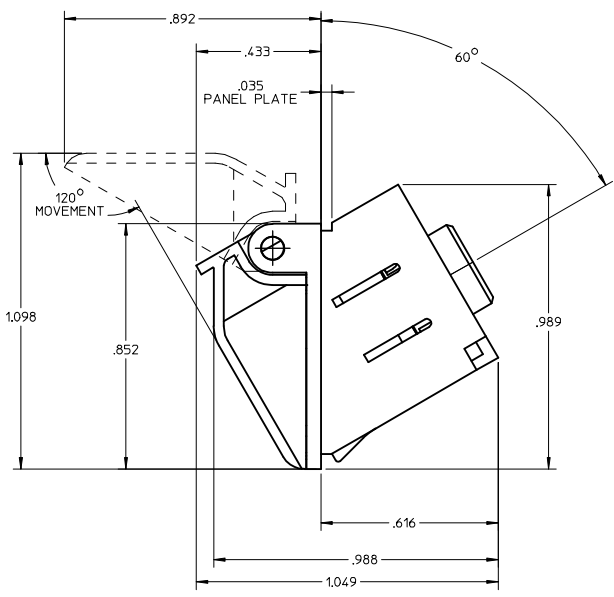
Tel: +86-755-8981 8866 Fax: +86-755-8427 6832

Email & Skype: info@chipsmall.com Web: www.chipsmall.com

Address: A1208, Overseas Decoration Building, #122 Zhenhua RD., Futian, Shenzhen, China

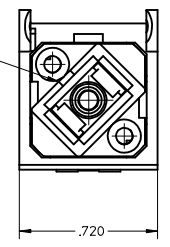


			3	2	1
			KIT P/N	SLEEVE MAT.	ADAPTER COLOR
			106004-3265	PHOSPHOR BRONZE	METAL
			106004-3266	ZIRCONIA	

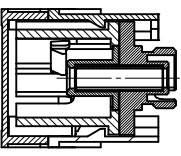
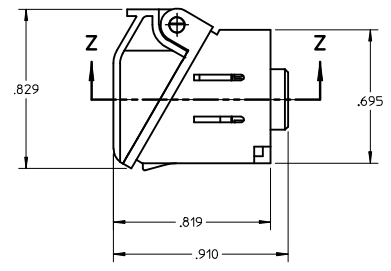


DOOR REMOVED

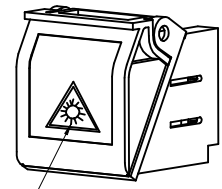
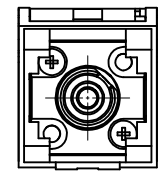
ADAPTER KEY LOCATION SEE NOTE 2



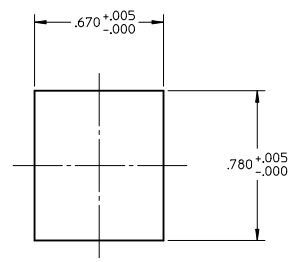
DOOR REMOVED



SECTION Z-Z



LABEL SEE NOTE 2



RECOMMENDED MOUNTING HOLE IN THE PANEL PLATE

NOTES:

- 1.ALL DIMENSION ARE FOR REFERENCE ONLY.
- 2.LABEL TO BE INSTALLED BY CUSTOMER.

ENTER DESCRIPTION EC NO: MF2009-0192 2008/10/30 DRWN: SZEWCZYK 2008/10/30 CHKD: 2008/10/30 APPR: IGJMIN 2008/10/30	QUALITY SYMBOLS ▽=0 ▽=0	GENERAL TOLERANCES (UNLESS SPECIFIED)		DIMENSION STYLE INCH ONLY	SCALE 2:1	DESIGN UNITS INCH	THIRD ANGLE PROJECTION
		4 PLACES ± --- ± --- 3 PLACES ± --- ± --- 2 PLACES ± --- ± --- 1 PLACE ± --- ± ---	mm INCH DRAWN BY PGIBLIN DATE 2005/11/08 CHECKED BY DATE	TITLE FC/SC SPX BEZEL ADAPT KIT W/PUSH TAB, BLACK			
		APPROVED BY DATE		MOLEX INCORPORATED			
		MATERIAL NO. SEE TABLE		DOCUMENT NO. SD-106004-326X	SHEET NO. 1 OF 1		
B1	REV	DRAFT WHERE APPLICABLE MUST REMAIN WITHIN DIMENSIONS		THIS DRAWING CONTAINS INFORMATION THAT IS PROPRIETARY TO MOLEX INCORPORATED AND SHOULD NOT BE USED WITHOUT WRITTEN PERMISSION			