



Chipsmall Limited consists of a professional team with an average of over 10 year of expertise in the distribution of electronic components. Based in Hongkong, we have already established firm and mutual-benefit business relationships with customers from,Europe,America and south Asia,supplying obsolete and hard-to-find components to meet their specific needs.

With the principle of "Quality Parts,Customers Priority,Honest Operation,and Considerate Service",our business mainly focus on the distribution of electronic components. Line cards we deal with include Microchip,ALPS,ROHM,Xilinx,Pulse,ON,Everlight and Freescale. Main products comprise IC,Modules,Potentiometer,IC Socket,Relay,Connector.Our parts cover such applications as commercial,industrial, and automotives areas.

We are looking forward to setting up business relationship with you and hope to provide you with the best service and solution. Let us make a better world for our industry!



Contact us

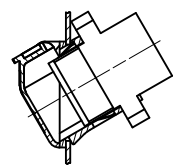
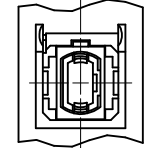
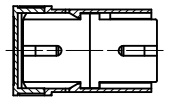
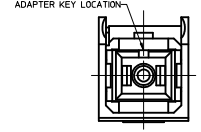
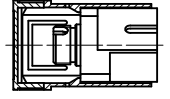
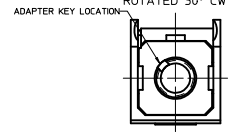
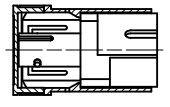
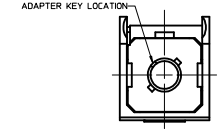
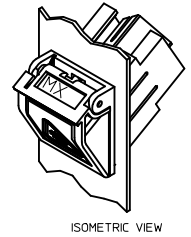
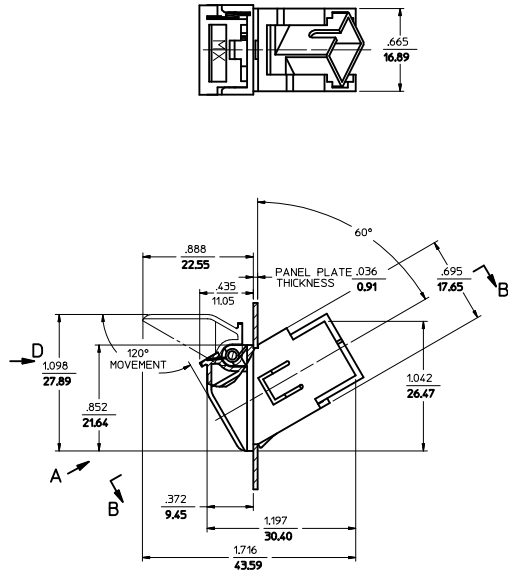
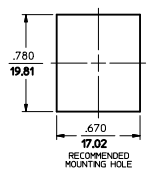
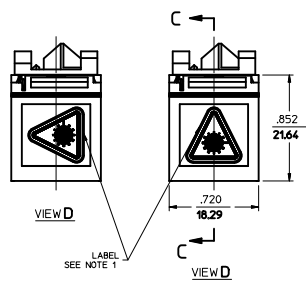
Tel: +86-755-8981 8866 Fax: +86-755-8427 6832

Email & Skype: info@chipsmall.com Web: www.chipsmall.com

Address: A1208, Overseas Decoration Building, #122 Zhenhua RD., Futian, Shenzhen, China



BEZEL P/N	VERSION	SLEEVE MATERIAL	ADAPTER COLOR
106004-3280	1 (ST-SC)	PHOSPHOR BRONZE	METAL
106004-3281	1 (ST-SC)	ZIRCONIA	
106004-3282	2 (FC-SC)	PHOSPHOR BRONZE	BLACK
106004-3283	2 (FC-SC)	ZIRCONIA	
106004-3284	3 (SC-SC)	PHOSPHOR BRONZE	RED
106004-3285	3 (SC-SC)	ZIRCONIA	
106004-3286	3 (SC-SC)	PHOSPHOR BRONZE	BLACK
106004-3287	3 (SC-SC)	ZIRCONIA	
106004-3288	4 (MTP-MTP)	N/A	METAL
106004-3290	1 (ST-SC)	PHOSPHOR BRONZE	
106004-3291	1 (ST-SC)	ZIRCONIA	BLACK
106004-3292	2 (FC-SC)	PHOSPHOR BRONZE	
106004-3293	2 (FC-SC)	ZIRCONIA	RED
106004-3294	3 (SC-SC)	PHOSPHOR BRONZE	
106004-3295	3 (SC-SC)	ZIRCONIA	BLACK
106004-3296	3 (SC-SC)	PHOSPHOR BRONZE	
106004-3297	3 (SC-SC)	ZIRCONIA	RED
106004-3298	4 (MTP-MTP)	N/A	
106004-3308	3 (SC-SC)	ZIRCONIA	GREEN



NOTES:
1. LABEL P/N 106004-3013 TO BE INSTALLED BY CUSTOMER.
2. MTP-MTP ADAPTER (VERSION 4) TO BE ASSEMBLED BY CUSTOMER, AFTER BEZEL IS INSTALLED IN PANEL CUTOUT.

ENTER DESCRIPTION IEC NO: MF2010-0335 DRAWN BY: ZVNER CHYD: 2010/02/02 APPR: GUMIN 2010/02/11	QUALITY SYMBOLS	GENERAL TOLERANCES (UNLESS SPECIFIED)	DIMENSION STYLE	SCALE	DESIGN UNITS	THIRD ANGLE PROJECTION															
	$\nabla=0$ $\nabla=0$	<table border="1"> <thead> <tr> <th></th> <th>mm</th> <th>INCH</th> </tr> </thead> <tbody> <tr> <td>4 PLACES</td> <td>±---</td> <td>±---</td> </tr> <tr> <td>3 PLACES</td> <td>±---</td> <td>±---</td> </tr> <tr> <td>2 PLACES</td> <td>±---</td> <td>±---</td> </tr> <tr> <td>1 PLACE</td> <td>±---</td> <td>±---</td> </tr> </tbody> </table>		mm	INCH	4 PLACES	±---	±---	3 PLACES	±---	±---	2 PLACES	±---	±---	1 PLACE	±---	±---	IN/MM	2:1	INCH	
		mm	INCH																		
	4 PLACES	±---	±---																		
3 PLACES	±---	±---																			
2 PLACES	±---	±---																			
1 PLACE	±---	±---																			
DRAFT WHERE APPLICABLE MUST REMAIN WITHIN DIMENSIONS	APPROVED BY: GUMIN DATE: 2010/02/02	DRAWN BY: RPACIFICI DATE: 2005/10/20 CHECKED BY: DATE:	TITLE: SIMPLEX BEZEL ADAPTER KITS																		
MATERIAL NO: SEE TABLE DOCUMENT NO: SD-106004-32XX SHEET NO: 1 OF 01	MOLEX INCORPORATED																				