



Chipsmall Limited consists of a professional team with an average of over 10 year of expertise in the distribution of electronic components. Based in Hongkong, we have already established firm and mutual-benefit business relationships with customers from,Europe,America and south Asia,supplying obsolete and hard-to-find components to meet their specific needs.

With the principle of “Quality Parts,Customers Priority,Honest Operation,and Considerate Service”,our business mainly focus on the distribution of electronic components. Line cards we deal with include Microchip,ALPS,ROHM,Xilinx,Pulse,ON,Everlight and Freescale. Main products comprise IC,Modules,Potentiometer,IC Socket,Relay,Connector.Our parts cover such applications as commercial,industrial, and automotives areas.

We are looking forward to setting up business relationship with you and hope to provide you with the best service and solution. Let us make a better world for our industry!



Contact us

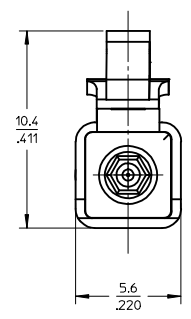
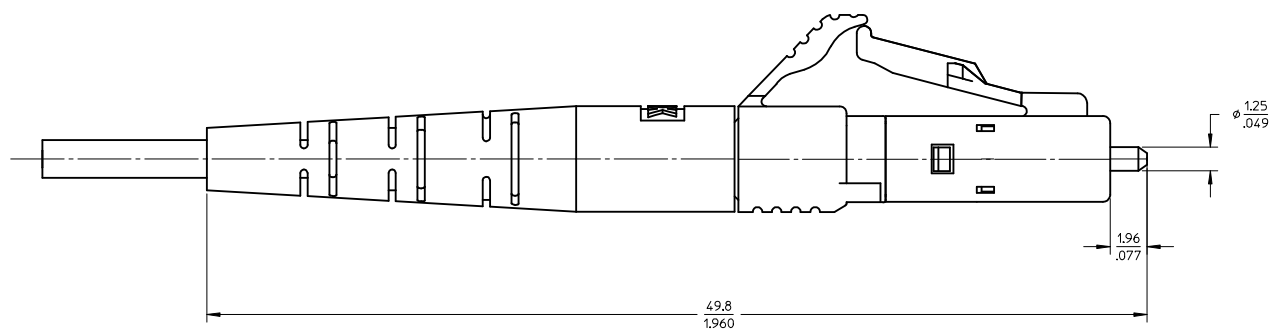
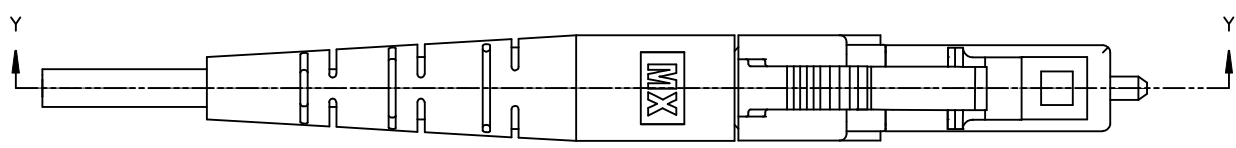
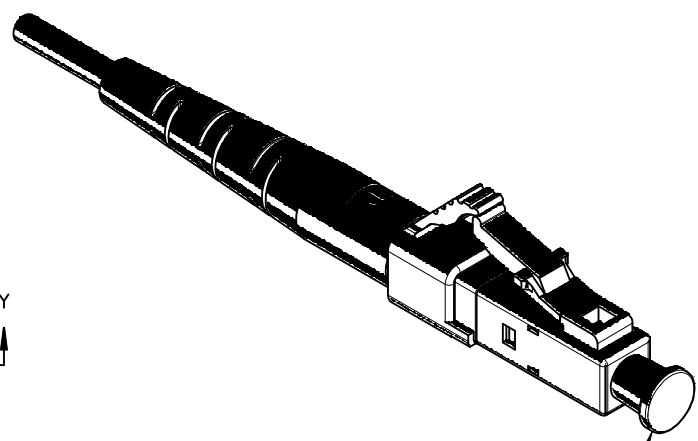
Tel: +86-755-8981 8866 Fax: +86-755-8427 6832

Email & Skype: info@chipsmall.com Web: www.chipsmall.com

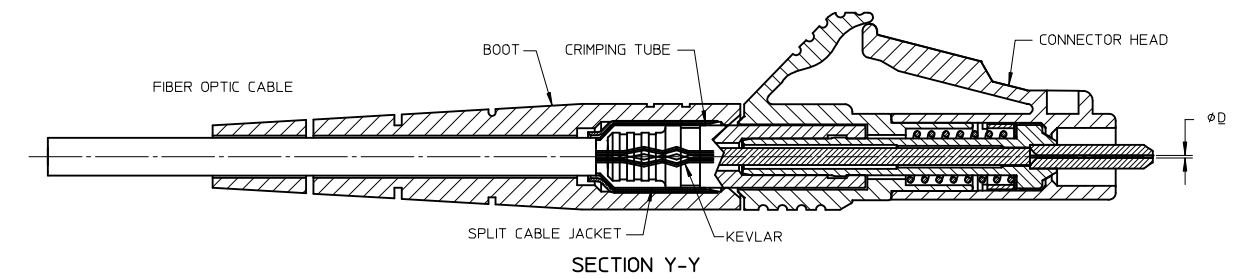
Address: A1208, Overseas Decoration Building, #122 Zhenhua RD., Futian, Shenzhen, China



PART NUMBER	CABLE TYPE	ØD (µm)	COLOR
106021-2500	SINGLE MODE PC	126	BLUE
106021-2600	MULTI MODE	127	BEIGE



DUST CAP
SEE NOTE 2



- NOTES:
- ALL DIMENSIONS ARE FOR REFERENCE ONLY.
 - DUST CAP SHOWN IN ISO VIEW ONLY.

ENTER DESCRIPTION	QUALITY SYMBOLS
EC NO: MF2015-0073	▽=0
DRWNS:BOJANIC 2014/08/05	▽=0
CHKD:	
APPR:YBEDNYAK 2014/08/12	
DESCRIPTION	
REV	

GENERAL TOLERANCES (UNLESS SPECIFIED)	
	mm INCH
4 PLACES ±	--- ±---
3 PLACES ±	--- ±---
2 PLACES ±	--- ±---
1 PLACE ±	--- ±---
ANGULAR ± ---°	
DRAFT WHERE APPLICABLE MUST REMAIN WITHIN DIMENSIONS	

DIMENSION STYLE	
MM/IN	
DRAWN BY	DATE
SMIGO	2010/11/04
CHECKED BY	DATE
YBELENKIY	
APPROVED BY	DATE
YBEDNYAK	2014/08/12
MATERIAL NO.	
SEE TABLE	

SCALE	DESIGN UNITS	THIRD ANGLE PROJECTION
5:1	INCH	
TITLE		
LC CONNECTOR SIMPLEX TIGHT CABLE		
MOLEX INCORPORATED		
DOCUMENT NO.	SHEET NO.	
SD-106021-2500	1 OF 1	
THIS DRAWING CONTAINS INFORMATION THAT IS PROPRIETARY TO MOLEX INCORPORATED AND SHOULD NOT BE USED WITHOUT WRITTEN PERMISSION		