



Chipsmall Limited consists of a professional team with an average of over 10 year of expertise in the distribution of electronic components. Based in Hongkong, we have already established firm and mutual-benefit business relationships with customers from,Europe,America and south Asia,supplying obsolete and hard-to-find components to meet their specific needs.

With the principle of “Quality Parts,Customers Priority,Honest Operation,and Considerate Service”,our business mainly focus on the distribution of electronic components. Line cards we deal with include Microchip,ALPS,ROHM,Xilinx,Pulse,ON,Everlight and Freescale. Main products comprise IC,Modules,Potentiometer,IC Socket,Relay,Connector.Our parts cover such applications as commercial,industrial, and automotives areas.

We are looking forward to setting up business relationship with you and hope to provide you with the best service and solution. Let us make a better world for our industry!



Contact us

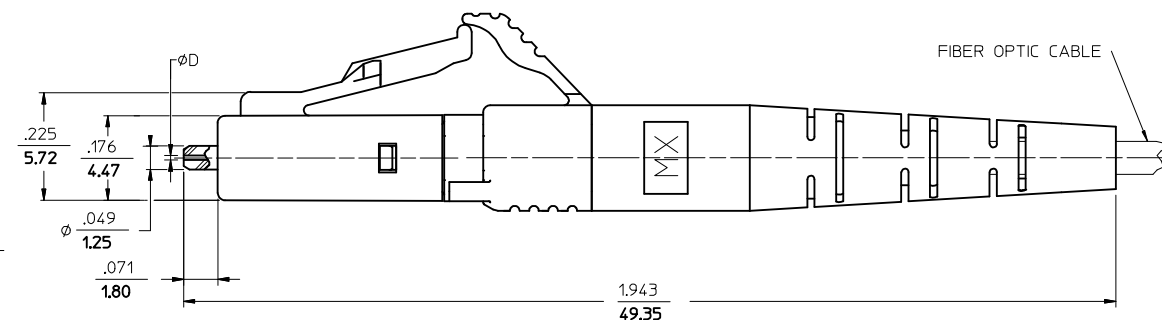
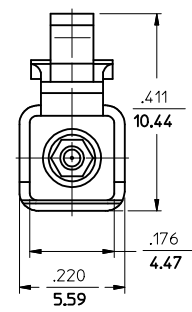
Tel: +86-755-8981 8866 Fax: +86-755-8427 6832

Email & Skype: info@chipsmall.com Web: www.chipsmall.com

Address: A1208, Overseas Decoration Building, #122 Zhenhua RD., Futian, Shenzhen, China



CONNECTOR P/N	ØD (4m)	BOOT COLOR	CABLE DESCRIPTION & Ø (mm)	CABLE TYPE
106024-2000	125.50	WHITE	SIMPLEX 1.6	SINGLE MODE
106024-2300			SIMPLEX 2.0	
			ZIPCORD 1.6	
106024-3000	127.00		SIMPLEX 1.6	MULTIMODE
106024-3300			SIMPLEX 2.0	
106024-3310*			ZIPCORD 1.6	
106024-3320				
106024-3390	125.00		SIMPLEX 1.6	SINGLE MODE
106024-4000			SIMPLEX 2.0	
106024-4300			ZIPCORD 1.6	
106024-430*	126.00		SIMPLEX 1.6	SINGLE MODE
106024-5000			SIMPLEX 2.0	
106024-5300		ZIPCORD 1.6		
106024-5310*	125.25	SIMPLEX 1.6	SINGLE MODE	
106024-6000		SIMPLEX 2.0		
106024-6300		ZIPCORD 1.6		
106090-4250	125.10-125.50	SIMPLEX 1.6	SINGLE MODE	
106090-4260		SIMPLEX 2.0		
106090-4270		ZIPCORD 1.6		
106090-4280	125.51-125.90	SIMPLEX 1.6	SINGLE MODE	
106090-2900		SIMPLEX 2.0		
106090-2930		ZIPCORD 1.6		
106090-2930	125.50	SIMPLEX 1.6	SINGLE MODE	
106090-4100		SIMPLEX 2.0		
106090-4130		ZIPCORD 1.6		
106090-6100	125.00	SIMPLEX 1.6	SINGLE MODE	
106090-6130		SIMPLEX 2.0		
106090-6100		ZIPCORD 1.6		
106090-6130	125.25	SIMPLEX 1.6	SINGLE MODE	
106090-6130		SIMPLEX 2.0		
106090-6135		ZIPCORD 1.6		
106024-3100	126.00		SIMPLEX 2.0	MULTIMODE
			ZIPCORD 1.6	



NOTES:
 1. DUST CAPS ARE NOT SHOWN BUT INCLUDED.
 *2. P/N 106024-4301, 106024-3310 AND 106024-5310 ARE BULK PACKED.

ENTER DESCRIPTION EC NO: MF2013-0244 DRW:KPEVZNER 2012/10/29 CHKD: APPR:IGJMIN 2012/10/31 REV: A3	QUALITY SYMBOLS	GENERAL TOLERANCES (UNLESS SPECIFIED)	DIMENSION STYLE	SCALE	DESIGN UNITS	THIRD ANGLE PROJECTION
	▽=0	mm INCH	IN/MM	4:1	INCH	
	▽=0	4 PLACES ± --- ± ---	DRAWN BY DATE	TITLE		
		3 PLACES ± --- ± ---	PGIBLIN 2005.09.01	LC CONNECTOR		
	2 PLACES ± --- ± ---	CHECKED BY DATE	APPROVED BY DATE molex			
	1 PLACE ± --- ± ---					
	0 PLACE ± ±		MATERIAL NO.	DOCUMENT NO.	SHEET NO.	
		ANGULAR ±1/2°	SEE TABLE	SD-1060RR-RRRR	1 OF 1	
		DRAFT WHERE APPLICABLE MUST REMAIN WITHIN DIMENSIONS	THIS DRAWING CONTAINS INFORMATION THAT IS PROPRIETARY TO MOLEX INCORPORATED AND SHOULD NOT BE USED WITHOUT WRITTEN PERMISSION			