



Chipsmall Limited consists of a professional team with an average of over 10 year of expertise in the distribution of electronic components. Based in Hongkong, we have already established firm and mutual-benefit business relationships with customers from,Europe,America and south Asia,supplying obsolete and hard-to-find components to meet their specific needs.

With the principle of “Quality Parts,Customers Priority,Honest Operation,and Considerate Service”,our business mainly focus on the distribution of electronic components. Line cards we deal with include Microchip,ALPS,ROHM,Xilinx,Pulse,ON,Everlight and Freescale. Main products comprise IC,Modules,Potentiometer,IC Socket,Relay,Connector.Our parts cover such applications as commercial,industrial, and automotives areas.

We are looking forward to setting up business relationship with you and hope to provide you with the best service and solution. Let us make a better world for our industry!



Contact us

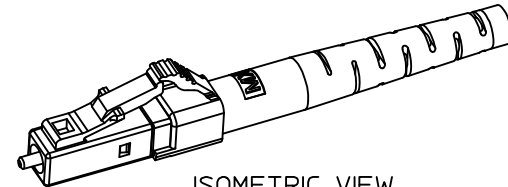
Tel: +86-755-8981 8866 Fax: +86-755-8427 6832

Email & Skype: info@chipsmall.com Web: www.chipsmall.com

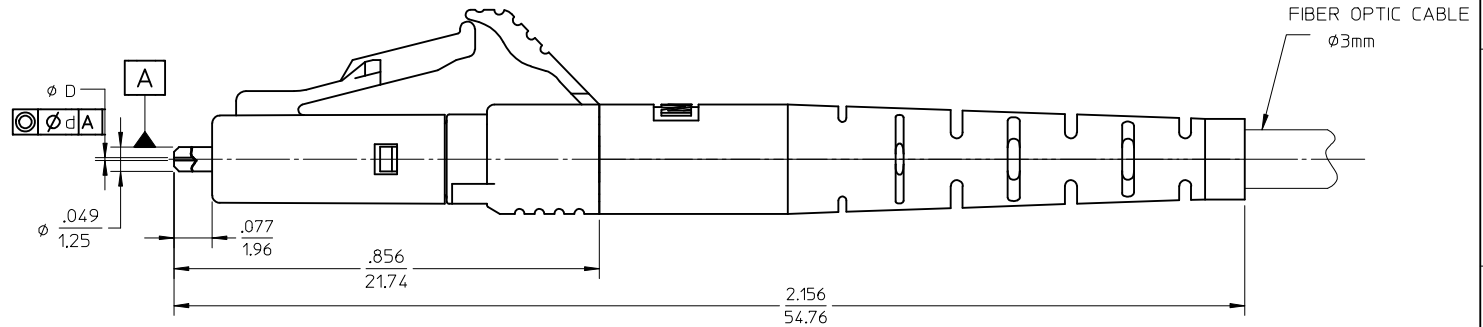
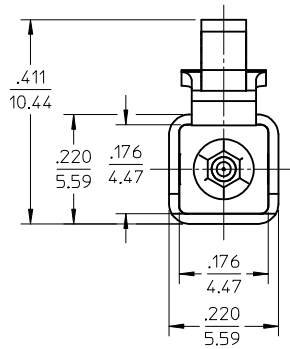
Address: A1208, Overseas Decoration Building, #122 Zhenhua RD., Futian, Shenzhen, China



CONNECTOR P/N	∅D (μm)	∅d (μm)	FERRULE MATERIAL	CONN. BODY COLOR	CONN. BOOT COLOR	CABLE TYPE
106024-2250	125.5 ^{+0.5} ₀	1	Zr	BLUE	WHITE	SINGLE MODE
106024-3250	127 ⁺³ ₀	3		BEIGE		MULTIMODE
106024-3260 [△]						
106024-4250	125 ^{+0.5} ₀	1		BLUE		SINGLE MODE
106024-5250	126 ⁺¹ ₀					
106024-5251 [△]						
106024-6250	125.25 ^{+0.5} ₀	0.5	LOW COST Zr	BEIGE	MULTIMODE	
106024-2270	125.5 ^{+0.5} ₀	3		BLUE	SINGLE MODE	
106024-3259	127 ⁺³ ₀	3				
106024-5259	126 ⁺¹ ₀	1				



ISOMETRIC VIEW
SCALE 2:1



NOTES:

- ALL DIMENSIONS ARE FOR REFERENCE ONLY.
- DUST CAP IS NOT SHOWN.
- [△] P/N 106024-5251 AND 106024-3260 ARE BULK PACKED IN QUANTITY OF 100 PIECES.

ENTER DESCRIPTION ELC NO: MF2013-0244 DRAWN: KPEVZNER 2012/10/30 CHKD: APPR: IGUMIN 2012/10/31 REV B1	QUALITY SYMBOLS	GENERAL TOLERANCES (UNLESS SPECIFIED)	DIMENSION STYLE	SCALE	DESIGN UNITS	THIRD ANGLE PROJECTION
	▽E=0	4 PLACES ± --- ± ---	IN/MM	4:1	INCH	
	▽E=0	3 PLACES ± --- ± ---	mm	DRAWN BY DATE	TITLE	
	▽E=0	2 PLACES ± --- ± ---	INCH	PGIBLIN 2005/11/10	LC CONNECTOR 3MM CABLE APPLICATION	
		1 PLACE ± --- ± ---	CHECKED BY DATE	APPROVED BY DATE		
		0 PLACE ± ±	MATERIAL NO. SEE TABLE		DOCUMENT NO. SD-106024-X250	
		ANGULAR ±1/2° DRAFT WHERE APPLICABLE MUST REMAIN WITHIN DIMENSIONS	SIZE B		SHEET NO. 1 OF 1	
THIS DRAWING CONTAINS INFORMATION THAT IS PROPRIETARY TO MOLEX INCORPORATED AND SHOULD NOT BE USED WITHOUT WRITTEN PERMISSION						