



Chipsmall Limited consists of a professional team with an average of over 10 year of expertise in the distribution of electronic components. Based in Hongkong, we have already established firm and mutual-benefit business relationships with customers from,Europe,America and south Asia,supplying obsolete and hard-to-find components to meet their specific needs.

With the principle of “Quality Parts,Customers Priority,Honest Operation,and Considerate Service”,our business mainly focus on the distribution of electronic components. Line cards we deal with include Microchip,ALPS,ROHM,Xilinx,Pulse,ON,Everlight and Freescale. Main products comprise IC,Modules,Potentiometer,IC Socket,Relay,Connector.Our parts cover such applications as commercial,industrial, and automotives areas.

We are looking forward to setting up business relationship with you and hope to provide you with the best service and solution. Let us make a better world for our industry!



## Contact us

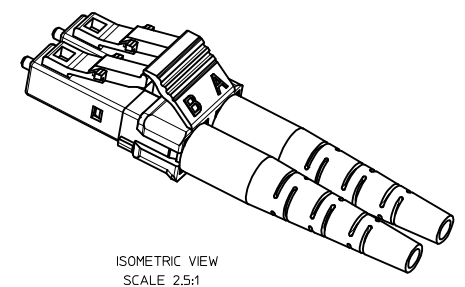
Tel: +86-755-8981 8866 Fax: +86-755-8427 6832

Email & Skype: info@chipsmall.com Web: www.chipsmall.com

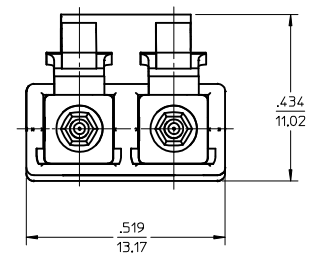
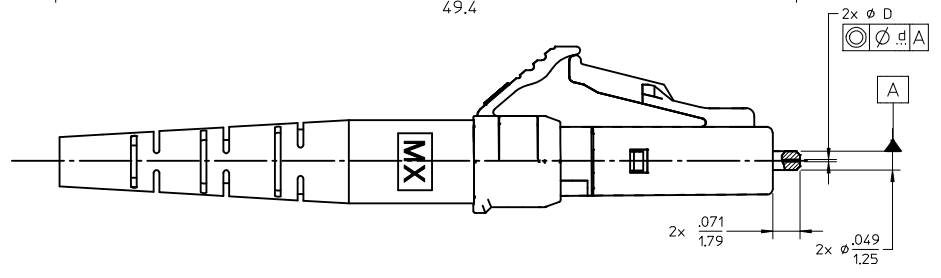
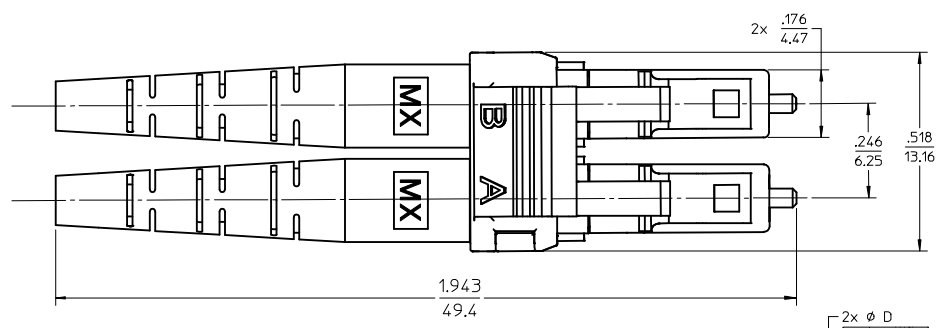
Address: A1208, Overseas Decoration Building, #122 Zhenhua RD., Futian, Shenzhen, China



| CONNECTOR P/N | ØD (4m) | Ød (4m) | DUPLEX CLIP COLOR | DUPLEX CLIP W/LATCH COLOR | BOOT COLOR | CABLE TYPE  |
|---------------|---------|---------|-------------------|---------------------------|------------|-------------|
| 106025-3800   | 127.0   | 3.0     | BEIGE             | BEIGE                     | WHITE      | MULTIMODE   |
| 106025-3810   |         |         |                   |                           | BLUE       |             |
| 106025-3820   |         |         |                   |                           | YELLOW     |             |
| 106025-3830   |         |         |                   |                           | BLACK      |             |
| 106025-3840   |         |         |                   |                           | BEIGE      |             |
| 106025-5800   | 126.0   | 1.0     |                   |                           | WHITE      | SINGLE MODE |
| 106025-5810   |         |         |                   |                           | BLUE       |             |
| 106025-5820   |         |         |                   |                           | YELLOW     |             |
| 106025-5830   |         |         |                   |                           | BLACK      |             |
| 106025-5840   |         |         |                   |                           | BEIGE      |             |
| 106025-2900   | 125.5   | 1.0     | BLUE              | BLUE                      | WHITE      | SINGLE MODE |
| 106025-2910   |         |         |                   |                           | BLACK      |             |
| 106025-2920   |         |         |                   |                           | BLUE       |             |
| 106025-2930   |         |         |                   |                           | YELLOW     |             |
| 106025-2940   |         |         |                   |                           | BEIGE      |             |
| 106090-7000   |         | 0.5     |                   |                           | WHITE      | SINGLE MODE |
| 106090-7010   |         |         |                   |                           | BLACK      |             |
| 106090-7020   |         |         |                   |                           | BLUE       |             |
| 106090-7030   |         |         |                   |                           | YELLOW     |             |
| 106090-7040   |         |         |                   |                           | BEIGE      |             |



ISOMETRIC VIEW  
SCALE 2.5:1



- NOTES:
- ALL DIMENSIONS ARE FOR REFERENCE ONLY.
  - DUPLEX CLIPS AND BOOTS SHOULD BE ASSEMBLED AFTER POLISHING OPERATION.
  - DUST CAPS ARE NOT SHOWN

|   |  |                                       |   |   |              |                        |
|---|--|---------------------------------------|---|---|--------------|------------------------|
| ENTER DESCRIPTION<br>EC NO: MF2013-0244<br>DRW/KP/VEZNER 2012/10/29<br>CHKD:<br>APPR: GUM/JIN 2012/10/31<br>REV: A1 | QUALITY SYMBOLS                                      | GENERAL TOLERANCES (UNLESS SPECIFIED) | DIMENSION STYLE   | SCALE   | DESIGN UNITS | THIRD ANGLE PROJECTION |
|   | ▽=0  | mm INCH                               | IN/MM   | 4:1   | INCH         |                        |
|   | ▽=0  | 4 PLACES ± --- ± ---                  | DRAWN BY DATE   | TITLE   |              |                        |
|   | ▽=0  | 3 PLACES ± 0.13 ± .005                | PGIBL IN 2005/11/14   | LC DUPLEX CONNECTOR<br>W/2 PIECE CLIP<br>(2.0 MM CABLE) |              |                        |
|   | 2 PLACES ± 0.38 ± .015                               | CHECKED BY DATE                       | molex   |   |              |                        |
|   | 1 PLACE ± --- ± ---                                  | APPROVED BY DATE                      | DOCUMENT NO. SD-106025-XXXX   |   |              |                        |
|   | 0 PLACE ± ±  | MATERIAL NO.                          | SHEET NO. 1 OF 1  |   |              |                        |
|   | ANGULAR ±1/2°  | SEE TABLE                             | THIS DRAWING CONTAINS INFORMATION THAT IS PROPRIETARY TO MOLEX INCORPORATED AND SHOULD NOT BE USED WITHOUT WRITTEN PERMISSION |   |              |                        |
|   | DRAFT WHERE APPLICABLE MUST REMAIN WITHIN DIMENSIONS |                                       |   |   |              |                        |