



Chipsmall Limited consists of a professional team with an average of over 10 year of expertise in the distribution of electronic components. Based in Hongkong, we have already established firm and mutual-benefit business relationships with customers from,Europe,America and south Asia,supplying obsolete and hard-to-find components to meet their specific needs.

With the principle of “Quality Parts,Customers Priority,Honest Operation,and Considerate Service”,our business mainly focus on the distribution of electronic components. Line cards we deal with include Microchip,ALPS,ROHM,Xilinx,Pulse,ON,Everlight and Freescale. Main products comprise IC,Modules,Potentiometer,IC Socket,Relay,Connector.Our parts cover such applications as commercial,industrial, and automotives areas.

We are looking forward to setting up business relationship with you and hope to provide you with the best service and solution. Let us make a better world for our industry!



## Contact us

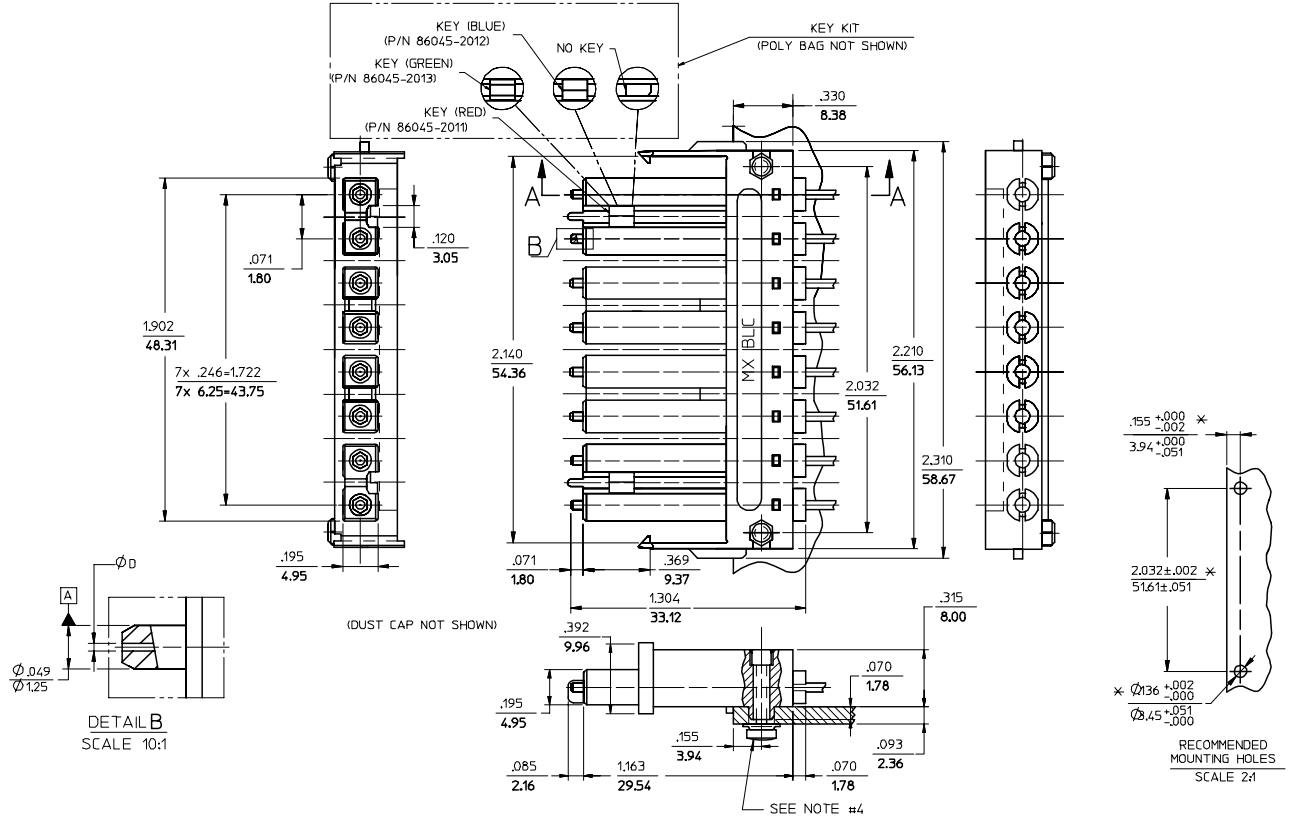
Tel: +86-755-8981 8866 Fax: +86-755-8427 6832

Email & Skype: info@chipsmall.com Web: www.chipsmall.com

Address: A1208, Overseas Decoration Building, #122 Zhenhua RD., Futian, Shenzhen, China



CONNECTOR P/N	ØD (H49)	CABLE TYPE
106046-2200	125.50	SINGLE MODE
106046-3000	127.00	MULTIMODE
106046-4200	125.00	SINGLE MODE
106046-5000	126.00	
106046-6200	125.25	



NOTES:

- ALL DIMENSIONS ARE FOR REFERENCE ONLY, EXCEPT WHEN MARKED WITH (\*).
- KEYS ARE TO BE PACKAGED UNASSEMBLED WITH CONNECTOR IN POLY BAG.
- RECOMMENDED TORQUE TO ASSEMBLE THIS SCREW-21bf-in./- 10%

ENTER DESCRIPTION EC NO: MF2007-0349 DRAWN/REV: ZNER 2006/11/28 CHKD: 2006/11/28 APPR: I GUMIN 2006/12/04 REV: A1	QUALITY SYMBOLS ▽=0 ▽=0	GENERAL TOLERANCES (UNLESS SPECIFIED)		DIMENSION STYLE		SCALE	DESIGN UNITS	THIRD ANGLE PROJECTION			
				IN/MM		4:1	INCH				
				mm	INCH	DRAWN BY		DATE	TITLE		
				4 PLACES ±	±	PGIBLIN	2005/10/20	BLC CONN.125.5,HGH.PREC, (8 POSITION)			
		3 PLACES ±	±	CHECKED BY		DATE	MOLEX INCORPORATED				
		2 PLACES ±	±	APPROVED BY		DATE	MATERIAL NO. DOCUMENT NO. SHEET NO.				
		1 PLACE ±	±	ANGULAR ±1/2°		SEE TABLE		SD-106046-XXX0		1 OF 01	
		DRAFT WHERE APPLICABLE MUST REMAIN WITHIN DIMENSIONS		SIZE		THIS DRAWING CONTAINS INFORMATION THAT IS PROPRIETARY TO MOLEX INCORPORATED AND SHOULD NOT BE USED WITHOUT WRITTEN PERMISSION					