



Chipsmall Limited consists of a professional team with an average of over 10 year of expertise in the distribution of electronic components. Based in Hongkong, we have already established firm and mutual-benefit business relationships with customers from,Europe,America and south Asia,supplying obsolete and hard-to-find components to meet their specific needs.

With the principle of “Quality Parts,Customers Priority,Honest Operation,and Considerate Service”,our business mainly focus on the distribution of electronic components. Line cards we deal with include Microchip,ALPS,ROHM,Xilinx,Pulse,ON,Everlight and Freescale. Main products comprise IC,Modules,Potentiometer,IC Socket,Relay,Connector.Our parts cover such applications as commercial,industrial, and automotives areas.

We are looking forward to setting up business relationship with you and hope to provide you with the best service and solution. Let us make a better world for our industry!



Contact us

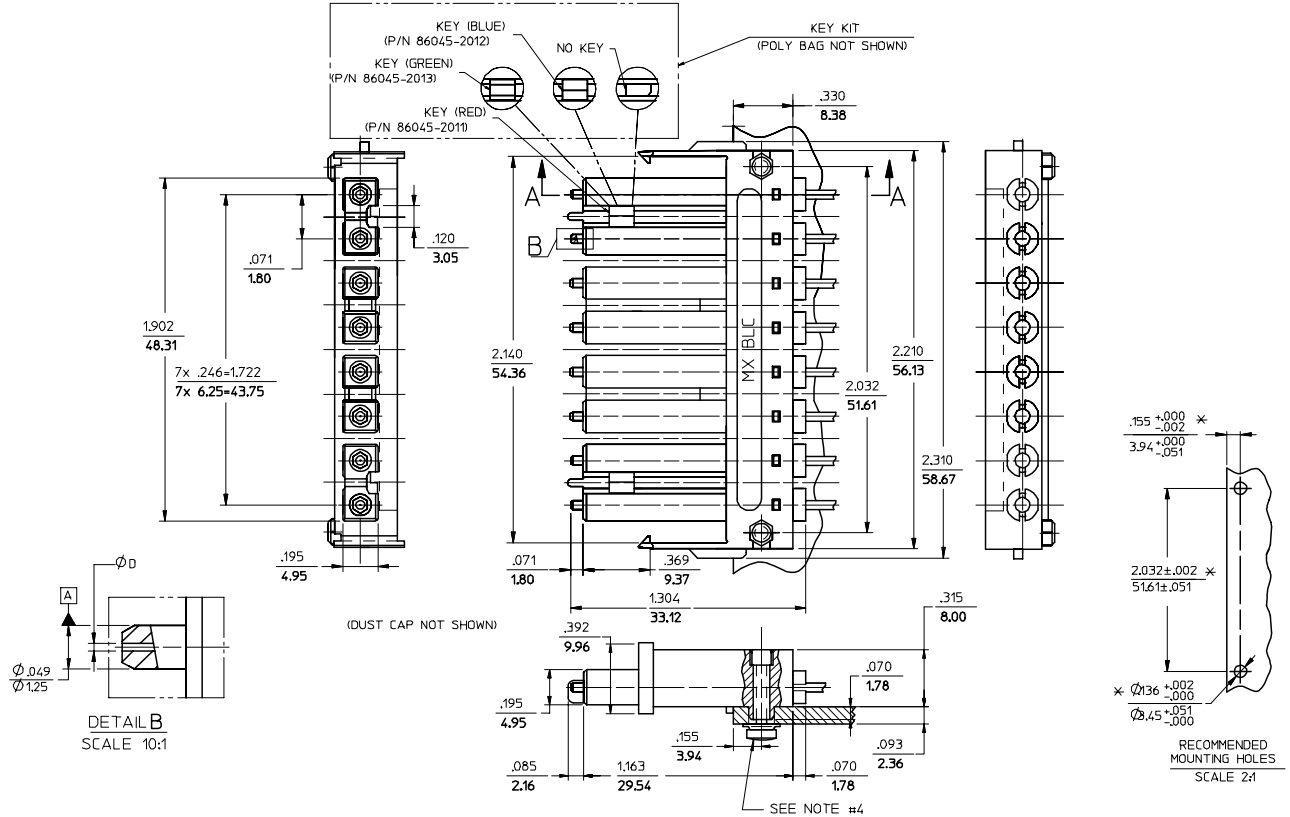
Tel: +86-755-8981 8866 Fax: +86-755-8427 6832

Email & Skype: info@chipsmall.com Web: www.chipsmall.com

Address: A1208, Overseas Decoration Building, #122 Zhenhua RD., Futian, Shenzhen, China



| CONNECTOR P/N | ØD (H49) | CABLE TYPE |
|---------------|----------|-------------|
| 106046-2200 | 125.50 | SINGLE MODE |
| 106046-3000 | 127.00 | MULTIMODE |
| 106046-4200 | 125.00 | SINGLE MODE |
| 106046-5000 | 126.00 | |
| 106046-6200 | 125.25 | |



NOTES:

1. ALL DIMENSIONS ARE FOR REFERENCE ONLY, EXCEPT WHEN MARKED WITH (*).
2. KEYS ARE TO BE PACKAGED UNASSEMBLED WITH CONNECTOR IN POLY BAG.
3. RECOMMENDED TORQUE TO ASSEMBLE THIS SCREW-21bf-in +/- 10%

| | | | | | | | | | | | |
|--|-------------------------------|---|------------|---------------------------|--------------------|---|----------------------|------------------------|--|--|--|
| ENTER DESCRIPTION EC NO: MF2007-0349 DRAWN/REV: ZNER 2006/11/28 CHKD: 2006/11/28 APPR: I GUMIN 2006/12/04 REV: A1 | QUALITY SYMBOLS ▽=0 ▽=0 | GENERAL TOLERANCES (UNLESS SPECIFIED) | | DIMENSION STYLE IN/MM | | SCALE 4:1 | DESIGN UNITS INCH | THIRD ANGLE PROJECTION | | | |
| | | 4 PLACES ± --- ± --- 3 PLACES ± --- ± --- 2 PLACES ± --- ± --- 1 PLACE ± --- ± --- | mm INCH | DRAWN BY PGIBLIN | DATE 2005/10/20 | TITLE BLC CONN.125.5,HGH.PREC, (8 POSITION) | | | | | |
| | | ANGULAR ±1/2° | | CHECKED BY | DATE | APPROVED BY | | | | | |
| | | DRAFT WHERE APPLICABLE MUST REMAIN WITHIN DIMENSIONS | | MATERIAL NO. SEE TABLE | | DOCUMENT NO. SD-106046-XXX0 | | SHEET NO. 1 OF 01 | | | |