



Chipsmall Limited consists of a professional team with an average of over 10 year of expertise in the distribution of electronic components. Based in Hongkong, we have already established firm and mutual-benefit business relationships with customers from,Europe,America and south Asia,supplying obsolete and hard-to-find components to meet their specific needs.

With the principle of “Quality Parts,Customers Priority,Honest Operation,and Considerate Service”,our business mainly focus on the distribution of electronic components. Line cards we deal with include Microchip,ALPS,ROHM,Xilinx,Pulse,ON,Everlight and Freescale. Main products comprise IC,Modules,Potentiometer,IC Socket,Relay,Connector.Our parts cover such applications as commercial,industrial, and automotives areas.

We are looking forward to setting up business relationship with you and hope to provide you with the best service and solution. Let us make a better world for our industry!



Contact us

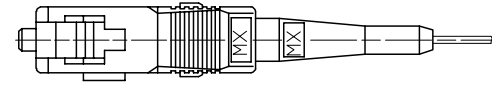
Tel: +86-755-8981 8866 Fax: +86-755-8427 6832

Email & Skype: info@chipsmall.com Web: www.chipsmall.com

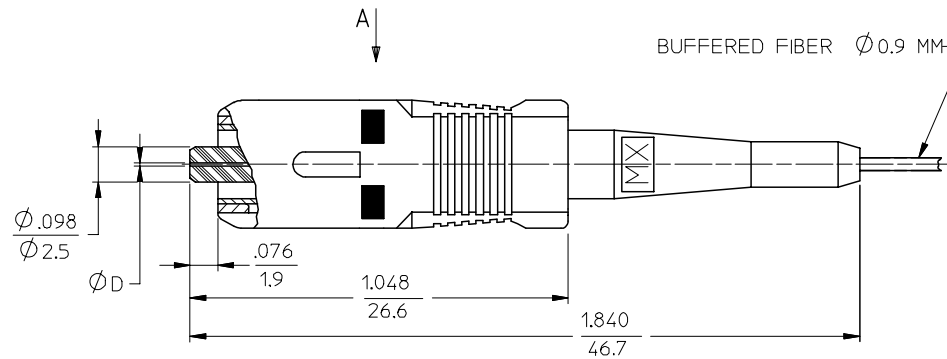
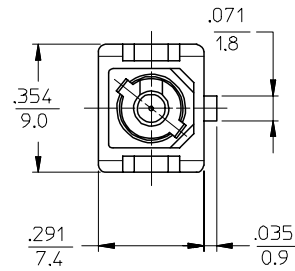
Address: A1208, Overseas Decoration Building, #122 Zhenhua RD., Futian, Shenzhen, China



CONNECTOR P/N	Ø (Min)	FERRULE MATERIAL	BOOT COLOR	HOUSING COLOR	CONNECTOR TYPE
106063-0500	127	Zr	BLUE	BLUE	MULTIMODE
106063-0520*			BEIGE	BEIGE	
106063-0560			BLACK	BLACK	
106063-0590*			RED	RED	
106063-0570	125.5		YELLOW	BLUE	SINGLE MODE
106063-2510			BLACK	BLACK	
106063-2500			RED	RED	
106063-2570			BLUE	BLUE	
106063-2580	128		BEIGE	BEIGE	MULTIMODE
106063-3500			BLACK	BLACK	
106063-3560			RED	RED	
106063-3570			YELLOW	BLUE	
106063-3580	125	BLACK	BLACK	SINGLE MODE	
106063-4500		RED	RED		
106063-4510		YELLOW	BLUE		
106063-5500		BLACK	BLACK		
106063-5590*	126	RED	RED	SINGLE MODE	
106063-5570		YELLOW	BLUE		
106063-5580		BEIGE	BEIGE		
106063-7500	127		YELLOW	BLUE	MULTIMODE
106063-3540	128		BEIGE	BEIGE	



VIEW A
SCALE 2.5:1



NOTES:

1. ALL DIMENSIONS ARE FOR REFERENCE ONLY.

*2. P/N 106063-0590, P/N 106063-5590, P/N 106063-3540 AND P/N 106063-0520 ARE BULK PACKED IN QUANTITIES OF 100PCS.

ENTER DESCRIPTION EC NO: MF2006-0424 DRAWN/RPACIFICI 2006/01/24 CHKD: 2006/01/24 APPR: JGUMIN 2006/01/24 REVISIONS	QUALITY SYMBOLS	GENERAL TOLERANCES (UNLESS SPECIFIED)	DIMENSION STYLE	SCALE	DESIGN UNITS	THIRD ANGLE PROJECTION
	$\nabla=0$ $\nabla=0$	mm INCH 4 PLACES ± --- ± --- 3 PLACES ± --- ± --- 2 PLACES ± --- ± --- 1 PLACE ± --- ± --- ANGULAR ±1/2°	INCH ONLY	4:1	INCH	
				DRAWN BY DATE	TITLE	
				RPACIFICI 2005/12/22	SC BARE FIBER CONNECTOR	
			CHECKED BY DATE	APPROVED BY DATE		
				MATERIAL NO. DOCUMENT NO.		
				SD-106063-X5X0		
				SHEET NO. 1 OF 1		
				THIS DRAWING CONTAINS INFORMATION THAT IS PROPRIETARY TO MOLEX INCORPORATED AND SHOULD NOT BE USED WITHOUT WRITTEN PERMISSION		