



Chipsmall Limited consists of a professional team with an average of over 10 year of expertise in the distribution of electronic components. Based in Hongkong, we have already established firm and mutual-benefit business relationships with customers from,Europe,America and south Asia,supplying obsolete and hard-to-find components to meet their specific needs.

With the principle of “Quality Parts,Customers Priority,Honest Operation,and Considerate Service”,our business mainly focus on the distribution of electronic components. Line cards we deal with include Microchip,ALPS,ROHM,Xilinx,Pulse,ON,Everlight and Freescale. Main products comprise IC,Modules,Potentiometer,IC Socket,Relay,Connector.Our parts cover such applications as commercial,industrial, and automotives areas.

We are looking forward to setting up business relationship with you and hope to provide you with the best service and solution. Let us make a better world for our industry!



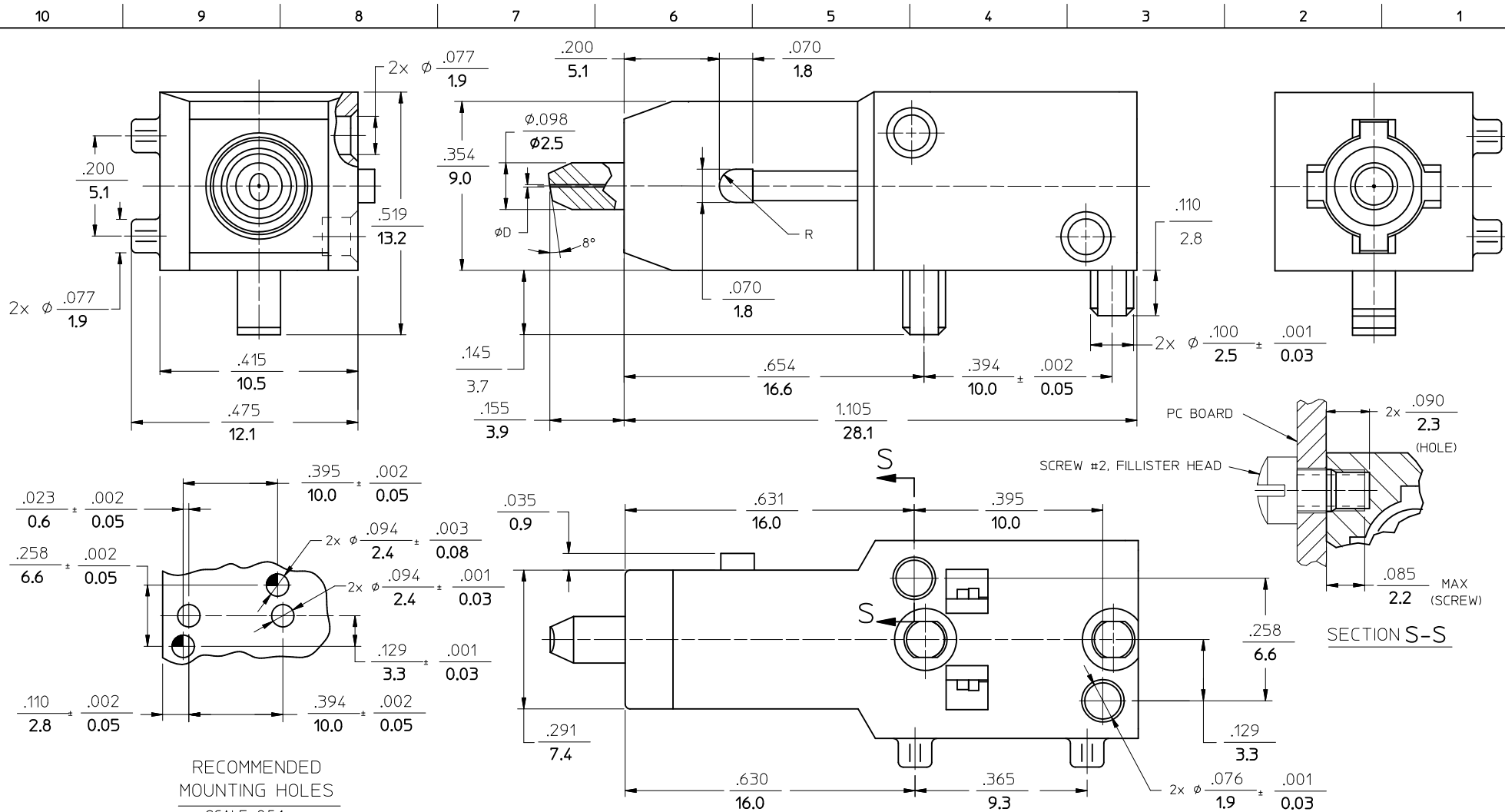
Contact us

Tel: +86-755-8981 8866 Fax: +86-755-8427 6832

Email & Skype: info@chipsmall.com Web: www.chipsmall.com

Address: A1208, Overseas Decoration Building, #122 Zhenhua RD., Futian, Shenzhen, China





RECOMMENDED MOUNTING HOLES
SCALE: 2.5:1

- NOTES:
1. ALL DIMENSIONS ARE FOR REFERENCE ONLY.
 2. ACTUAL PARTS TO BE PACKAGED AS A KIT (LOOSE COMPONENTS).

CONNECTOR P/N	ØD (4m)
106076-2300	125.50 ^{+0.5} / ₀
106076-4300	125.00 ^{+0.5} / ₀
106076-4400	125.25 ^{+0.5} / ₀
106076-5000	126.00 ^{+1.0} / ₀

ENTER DESCRIPTION EC NO: MF2011-0026 DRAWN: KPEVZNER 2010/07/21 CHKD: 2010/07/21 APPR: BANDREI 2010/07/23 A1	QUALITY SYMBOLS ▽=0 ▽=0	GENERAL TOLERANCES (UNLESS SPECIFIED) <table border="1"> <thead> <tr> <th></th> <th>mm</th> <th>INCH</th> </tr> </thead> <tbody> <tr> <td>4 PLACES</td> <td>±---</td> <td>±---</td> </tr> <tr> <td>3 PLACES</td> <td>±---</td> <td>±---</td> </tr> <tr> <td>2 PLACES</td> <td>±---</td> <td>±---</td> </tr> <tr> <td>1 PLACE</td> <td>±---</td> <td>±---</td> </tr> </tbody> </table> ANGULAR ±1/2° DRAFT WHERE APPLICABLE MUST REMAIN WITHIN DIMENSIONS		mm	INCH	4 PLACES	±---	±---	3 PLACES	±---	±---	2 PLACES	±---	±---	1 PLACE	±---	±---	DIMENSION STYLE IN/MM DRAWN BY PGIBLIN DATE 2005/10/27 CHECKED BY DATE APPROVED BY BANDREI DATE 2010/07/21 MATERIAL NO. SEE TABLE	SCALE 5:1 DESIGN UNITS INCH THIRD ANGLE PROJECTION TITLE BSC-2 APC CONNECTOR MOLEX INCORPORATED DOCUMENT NO. SD-106076-XX00 SHEET NO. 1 OF 01
		mm	INCH																
	4 PLACES	±---	±---																
	3 PLACES	±---	±---																
2 PLACES	±---	±---																	
1 PLACE	±---	±---																	
THIS DRAWING CONTAINS INFORMATION THAT IS PROPRIETARY TO MOLEX INCORPORATED AND SHOULD NOT BE USED WITHOUT WRITTEN PERMISSION																			