



Chipsmall Limited consists of a professional team with an average of over 10 year of expertise in the distribution of electronic components. Based in Hongkong, we have already established firm and mutual-benefit business relationships with customers from,Europe,America and south Asia,supplying obsolete and hard-to-find components to meet their specific needs.

With the principle of “Quality Parts,Customers Priority,Honest Operation,and Considerate Service”,our business mainly focus on the distribution of electronic components. Line cards we deal with include Microchip,ALPS,ROHM,Xilinx,Pulse,ON,Everlight and Freescale. Main products comprise IC,Modules,Potentiometer,IC Socket,Relay,Connector.Our parts cover such applications as commercial,industrial, and automotives areas.

We are looking forward to setting up business relationship with you and hope to provide you with the best service and solution. Let us make a better world for our industry!



Contact us

Tel: +86-755-8981 8866 Fax: +86-755-8427 6832

Email & Skype: info@chipsmall.com Web: www.chipsmall.com

Address: A1208, Overseas Decoration Building, #122 Zhenhua RD., Futian, Shenzhen, China



10	9	8	7	6	5	4	3	2	1
CONNECTOR P/N	FLOAT	A	B	C	MATES WITH BACKPLANE ADAPTER P/N				
106105-1100	NO	1.457 (37)	.135 (3.43)	.275 (6.98)	106105-1000, 106105-1001				
106105-2100	YES	1.497 (38)	.090 (2.29)	.295 (7.49)	106105-2000				

F

E

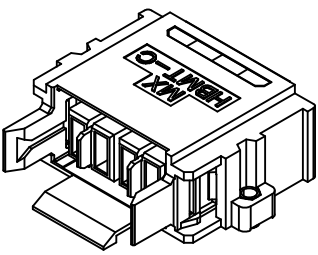
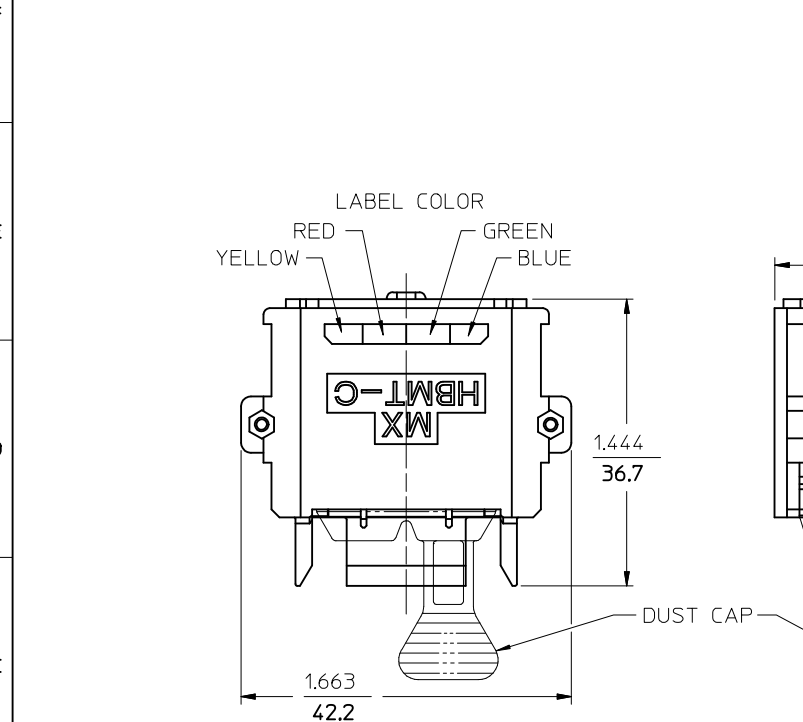
D

C

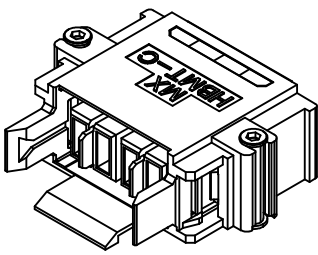
B

A

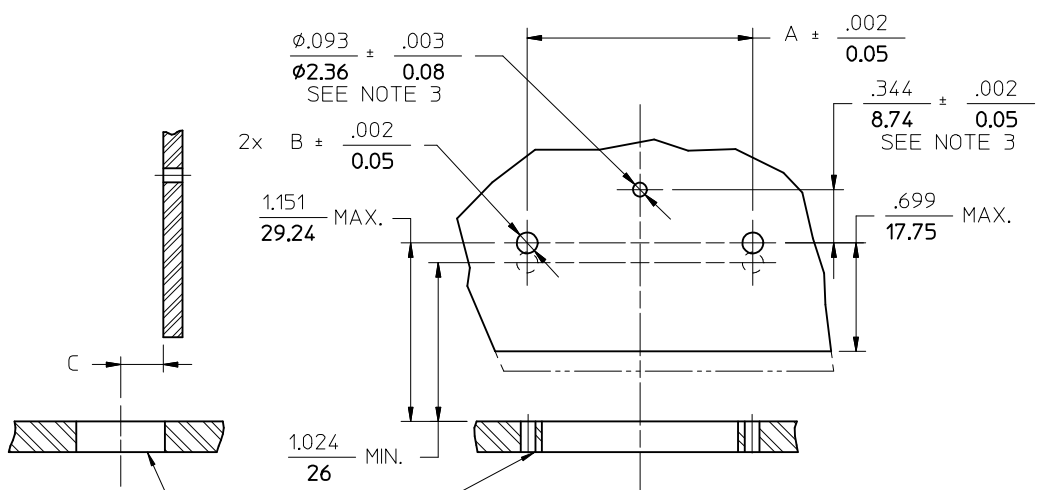
tb_frame_B_P_AM_T
Rev. G 2012/01/11



ISOMETRIC VIEW
P/N 106105-1100 WITHOUT FLOAT



ISOMETRIC VIEW
P/N 106105-2100 WITH FLOAT



BACKPLANE
RECOMMENDED MOUNTING PATTERN
SCALE 1.25:1

- NOTES:
1. RIVETS NOT INCLUDED WITH CONNECTOR.
 2. SCREW ARE INCLUDED WITH CONNECTOR AND ARE INSTALLED BY USER.
RECOMMENDED TORQUE: 2.5 TO 4 IN.LBS (0.28 TO 0.45 N.m) DEPENDING ON SUBSTRATE MATERIAL AND SCREW TYPE. USER IS ENCOURAGED TO DETERMINE THE PROPER TORQUE TO USE BY TRIAL (SEE MACHINERY'S HANDBOOK FOR PROCEDURE).
 3. CENTER LOCATOR HOLE AND PEG NOT USED ON P/N 106105-2100

ENTER DESCRIPTION EC NO: MF2015-0125 DRAWN:MAGHAYRE CHKD: APPR:WCHEN		DESCRIPTION 2014/09/10 2014/12/09	QUALITY SYMBOLS <div><div><div>▽</div><div>F=0</div></div><div><div>▽</div><div>F=0</div></div><div><div>▽</div><div>F=0</div></div></div>	GENERAL TOLERANCES (UNLESS SPECIFIED)		DIMENSION STYLE IN/MM		SCALE	DESIGN UNITS INCH	THIRD ANGLE PROJECTION				
				<div><div>mm</div><div>INCH</div></div>		DRAWN BY PGIBLIN		DATE 2005/10/31	TITLE HBMT DAUGHTERCARD CONNECTOR					
						CHECKED BY		DATE						
				4 PLACES		± ---	± ---	APPROVED BY		DATE	molex			
				3 PLACES		± ---	± ---	WCHEN		2014/12/09				
				2 PLACES		± ---	± ---	MATERIAL NO.		DOCUMENT NO.				
1 PLACE		± ---	± ---	SEE TABLE		SD-106105-1100		1 OF 2						
0 PLACE		±	±	SIZE B		THIS DRAWING CONTAINS INFORMATION THAT IS PROPRIETARY TO MOLEX INCORPORATED AND SHOULD NOT BE USED WITHOUT WRITTEN PERMISSION								
ANGULAR ±1/2°		DRAFT WHERE APPLICABLE MUST REMAIN WITHIN DIMENSIONS												

F

E

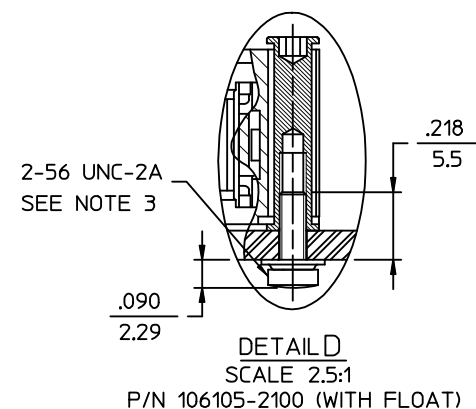
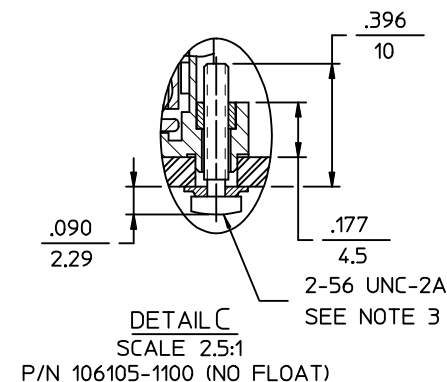
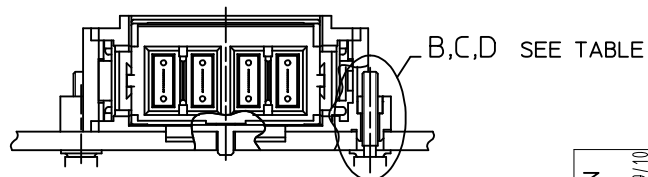
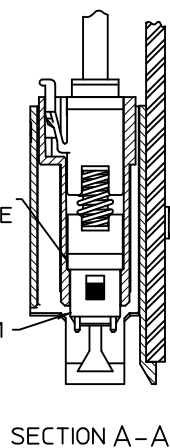
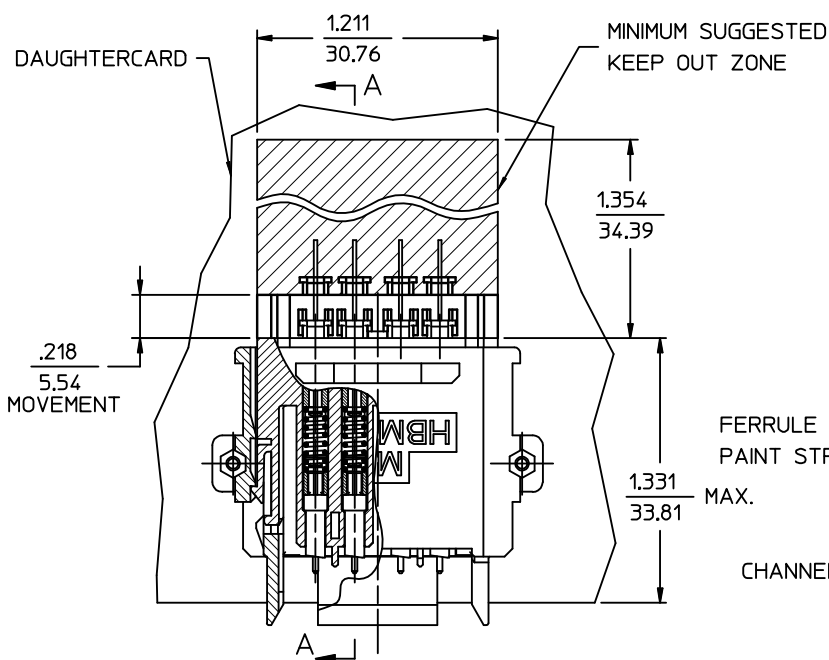
D


C

B

A

1



ENTER DESCRIPTION EC NO: MF2015-0125 DRAWN BY: DRW:MAGHAYRE 2014/09/10 CHKD: CHKD: APPR: WCHEN 2014/12/09 REV	DESCRIPTION	QUALITY SYMBOLS ▽=0 ▽=0	GENERAL TOLERANCES (UNLESS SPECIFIED)		DIMENSION STYLE IN/MM		SCALE 2.5:1	DESIGN UNITS INCH	THIRD ANGLE PROJECTION 				
				mm	INCH	DRAWN BY PGIBLIN	DATE 2005/10/31	TITLE HBMT DAUGHTERCARD CONNECTOR					
			4 PLACES	± ---	± ---	CHECKED BY	DATE						
			3 PLACES	± ---	± ---	APPROVED BY DATE 2014/12/09							
			2 PLACES	± ---	± ---								
			1 PLACE	± ---	± ---								
			0 PLACE	±	±								
			DRAFT WHERE APPLICABLE MUST REMAIN WITHIN DIMENSIONS			ANGULAR ±1/2°		MATERIAL NO.		DOCUMENT NO.		SHEET NO.	
						SEE TABLE		SD-106105-1100		2 OF 2			
						THIS DRAWING CONTAINS INFORMATION THAT IS PROPRIETARY TO MOLEX INCORPORATED AND SHOULD NOT BE USED WITHOUT WRITTEN PERMISSION							