



Chipsmall Limited consists of a professional team with an average of over 10 year of expertise in the distribution of electronic components. Based in Hongkong, we have already established firm and mutual-benefit business relationships with customers from,Europe,America and south Asia,supplying obsolete and hard-to-find components to meet their specific needs.

With the principle of “Quality Parts,Customers Priority,Honest Operation,and Considerate Service”,our business mainly focus on the distribution of electronic components. Line cards we deal with include Microchip,ALPS,ROHM,Xilinx,Pulse,ON,Everlight and Freescale. Main products comprise IC,Modules,Potentiometer,IC Socket,Relay,Connector.Our parts cover such applications as commercial,industrial, and automotives areas.

We are looking forward to setting up business relationship with you and hope to provide you with the best service and solution. Let us make a better world for our industry!



## Contact us

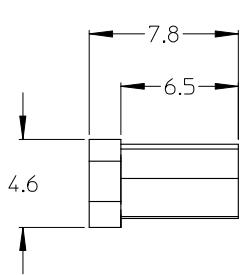
Tel: +86-755-8981 8866 Fax: +86-755-8427 6832

Email & Skype: info@chipsmall.com Web: www.chipsmall.com

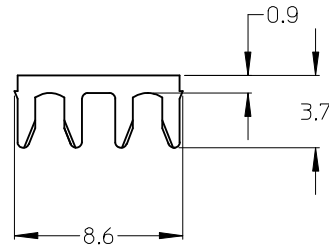
Address: A1208, Overseas Decoration Building, #122 Zhenhua RD., Futian, Shenzhen, China



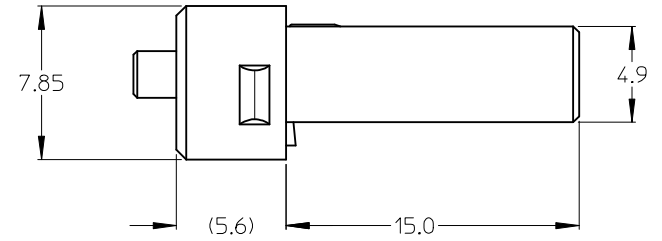
10	9
P/N	STOPPER-MATERIAL
106108-6004	SS 304
106108-6012	BeCu C17200



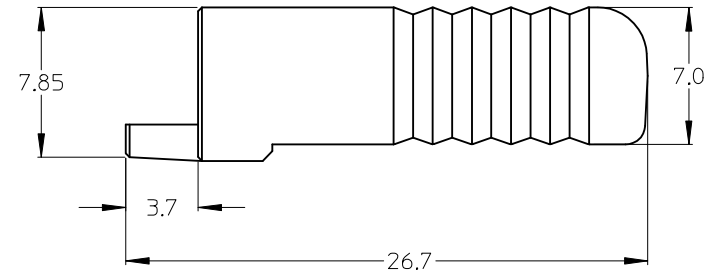
NEW SMI PLG CAP (2X )



NEW SMI CONNECTOR FIBER STOPPER



NEW SMI CONNECTOR PLUG HOUSING



NEW SMI CONNECTOR COVER HOUSING

NOTES:

1. ALL DIMENSIONS ARE FOR REFERENCE ONLY.
2. CONNECTOR SHALL BE BULK PACKED IN QUANTITY OF 50.

<b>ENTER DESCRIPTION</b> EC NO: MF2014-0622 DRWN: SBOJANIC 2014/04/06 CHKD: APPR: IGUMIN 2014/04/11 REV:	QUALITY SYMBOLS ▽=0 ▽=0	GENERAL TOLERANCES (UNLESS SPECIFIED)		DIMENSION STYLE <b>MM ONLY</b>		SCALE	DESIGN UNITS INCH	THIRD ANGLE PROJECTION	
		mm	INCH	DRAWN BY	DATE	TITLE <b>SMI LONG BODY CONNECTOR KIT (BULK PACK)</b>			
	4 PLACES	±---	±---	JSZEWCK	2007/04/19				
	3 PLACES	±---	±---	CHECKED BY	DATE	APPROVED BY I. GUMIN 2007/04/19 <b>MOLEX INCORPORATED</b>			
2 PLACES	±---	±---							
1 PLACE	±---	±---	ANGULAR ±1/2°		MATERIAL NO.		DOCUMENT NO.		SHEET NO.
DRAFT WHERE APPLICABLE MUST REMAIN WITHIN DIMENSIONS			SEE TABLE		SD-106108-6004		1 OF 01		
THIS DRAWING CONTAINS INFORMATION THAT IS PROPRIETARY TO MOLEX INCORPORATED AND SHOULD NOT BE USED WITHOUT WRITTEN PERMISSION									