



Chipsmall Limited consists of a professional team with an average of over 10 year of expertise in the distribution of electronic components. Based in Hongkong, we have already established firm and mutual-benefit business relationships with customers from,Europe,America and south Asia,supplying obsolete and hard-to-find components to meet their specific needs.

With the principle of “Quality Parts,Customers Priority,Honest Operation,and Considerate Service”,our business mainly focus on the distribution of electronic components. Line cards we deal with include Microchip,ALPS,ROHM,Xilinx,Pulse,ON,Everlight and Freescale. Main products comprise IC,Modules,Potentiometer,IC Socket,Relay,Connector.Our parts cover such applications as commercial,industrial, and automotives areas.

We are looking forward to setting up business relationship with you and hope to provide you with the best service and solution. Let us make a better world for our industry!



Contact us

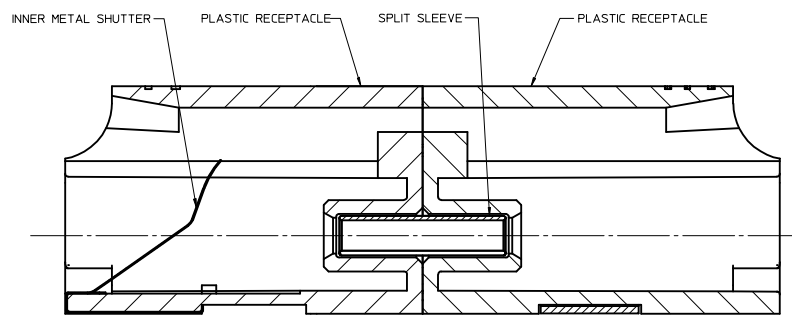
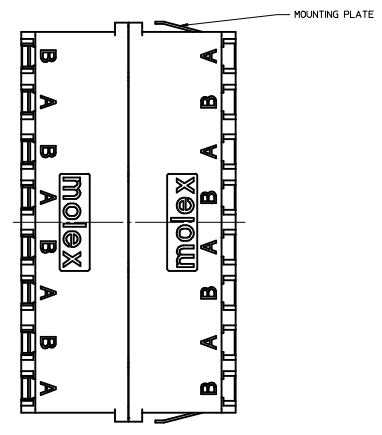
Tel: +86-755-8981 8866 Fax: +86-755-8427 6832

Email & Skype: info@chipsmall.com Web: www.chipsmall.com

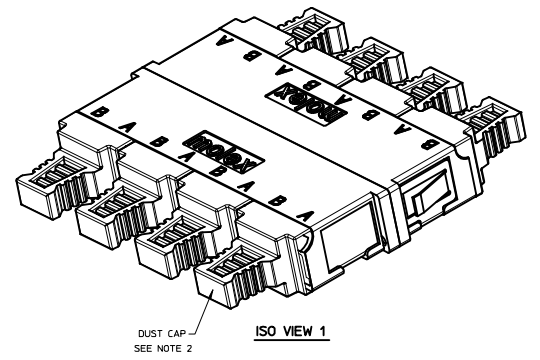
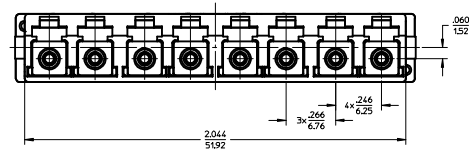
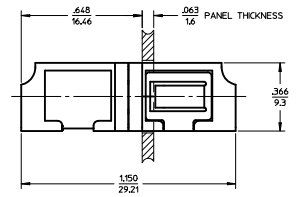
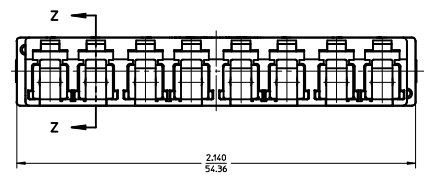
Address: A1208, Overseas Decoration Building, #122 Zhenhua RD., Futian, Shenzhen, China



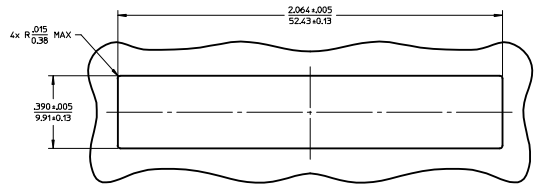
LC 8 PORT ADAPTER P/N	ADAPTER COLOR	SPLIT SLEEVE MATERIAL
106121-0450	BLUE	CERAMIC
106121-0460	GREEN	CERAMIC
106121-0470	BEIGE	PHOSPHOR BRONZE
106121-0480	AQUA	PHOSPHOR BRONZE



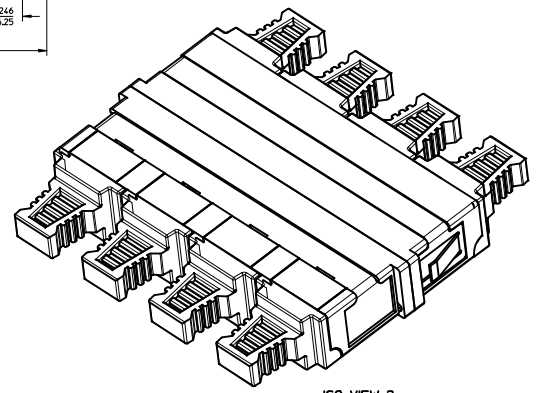
SECTION Z-Z
Scale 10:1



ISO VIEW 1
DUST CAP - SEE NOTE 2



RECOMMENDED
MOUNTING PATTERN



ISO VIEW 2

NOTES:
1. ALL DIMENSIONS ARE FOR REFERENCE.
2. DUST CAPS SHOWN IN ISO VIEWS ONLY.

ENTER DESCRIPTION IEC NO. MF2015-0403 DRAWN BY: YBLENKIY CHKD: WCHEN APPR: WCHEN DATE: 2015/06/16 2015/09/25	QUALITY SYMBOLS	GENERAL TOLERANCES (UNLESS SPECIFIED)	DIMENSION STYLE IN/MM	SCALE 3:1	DESIGN UNITS INCH	THIRD ANGLE PROJECTION	
		4 PLACES ± --- ± --- 3 PLACES ± --- ± --- 2 PLACES ± --- ± --- 1 PLACE ± --- ± ---	mm INCH	DRAWN BY DATE YBLENKIY 2012/01/04	TITLE LC 8 PORT ADAPTER SNAP MOUNT INNER SHUTTERS		
		ANGULAR ± --- °	DRAFT WHERE APPLICABLE MUST REMAIN WITHIN DIMENSIONS	CHECKED BY DATE WCHEN 2012/02/06	APPROVED BY DATE WCHEN 2012/02/06	MATERIAL NO. SEE TABLE	DOCUMENT NO. SD-106121-0450
						MOLEX INCORPORATED	SHEET NO. 1 OF 1