



Chipsmall Limited consists of a professional team with an average of over 10 year of expertise in the distribution of electronic components. Based in Hongkong, we have already established firm and mutual-benefit business relationships with customers from,Europe,America and south Asia,supplying obsolete and hard-to-find components to meet their specific needs.

With the principle of “Quality Parts,Customers Priority,Honest Operation,and Considerate Service”,our business mainly focus on the distribution of electronic components. Line cards we deal with include Microchip,ALPS,ROHM,Xilinx,Pulse,ON,Everlight and Freescale. Main products comprise IC,Modules,Potentiometer,IC Socket,Relay,Connector.Our parts cover such applications as commercial,industrial, and automotives areas.

We are looking forward to setting up business relationship with you and hope to provide you with the best service and solution. Let us make a better world for our industry!



Contact us

Tel: +86-755-8981 8866 Fax: +86-755-8427 6832

Email & Skype: info@chipsmall.com Web: www.chipsmall.com

Address: A1208, Overseas Decoration Building, #122 Zhenhua RD., Futian, Shenzhen, China



10

9

8

7

6

5

4

3

2

106123

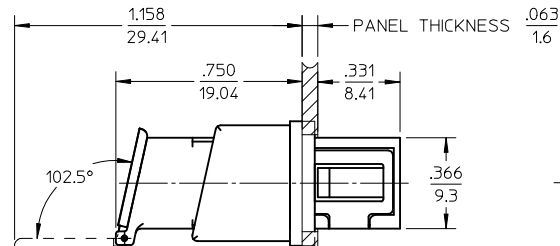
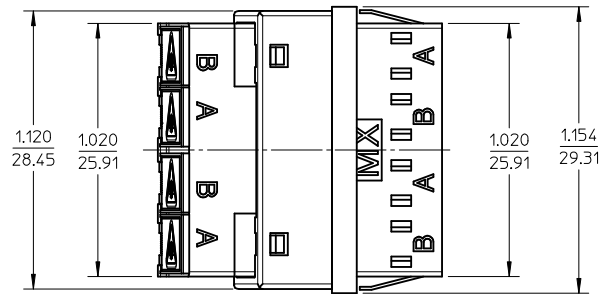
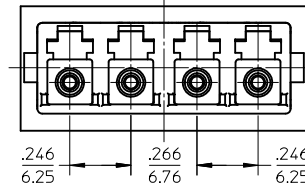
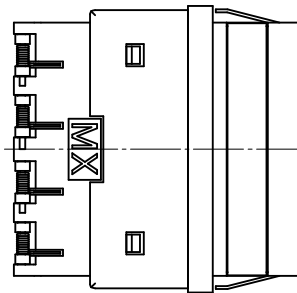
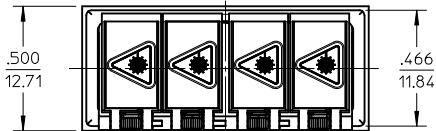
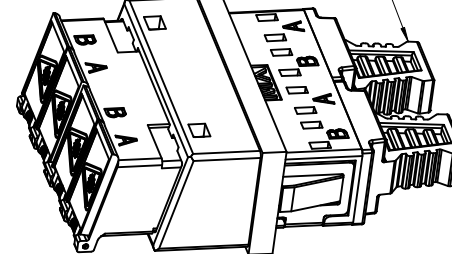
ADAPTER
P/NADAPTER
P/N

106123-0500

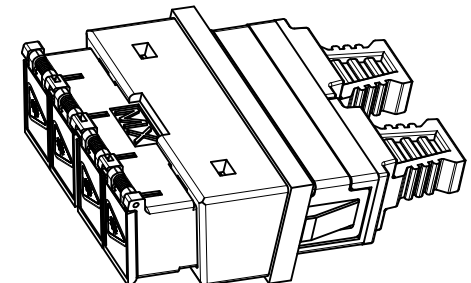
FABRIC OVER FOAM

106123-0530

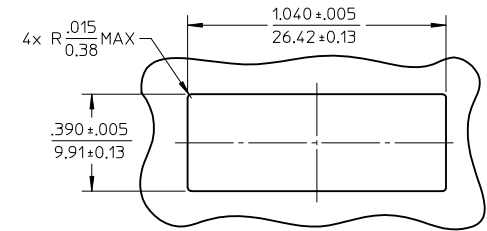
SOLID

COMPRESSED
EMI GASKET .049
1.24EMI GASKET
DUST CAP
2 PIECES

ISO VIEW 1



ISO VIEW 2

RECOMMENDED
MOUNTING PATTERN

NOTES:

1. ALL DIMENSIONS ARE FOR REFERENCE.
2. TWO DUST CAPS SHOWN IN ISOMETRIC VIEW ONLY.
3. LC EMI QUAD ADAPTER HAS SC DUPLEX ADAPTER FOOTPRINT.

ENTER DESCRIPTION	2010/02/05	2010/02/11
EC NO: MF2010-0345	2010/02/09	2010/02/11
IDRW:KPEVZNER	2010/02/09	2010/02/11
CHKD:		
APPR: IGUMIN		
REV	DESCRIPTION	
C		

QUALITY SYMBOLS	▽=0	▽=0
-----------------	-----	-----

GENERAL TOLERANCES (UNLESS SPECIFIED)	
4 PLACES	± --- ± ---
3 PLACES	± --- ± ---
2 PLACES	± --- ± ---
1 PLACE	± --- ± ---
ANGULAR	± --- °
DRAFT WHERE APPLICABLE MUST REMAIN WITHIN DIMENSIONS	

DIMENSION STYLE	IN/MM
DRAWN BY	PGIBLIN
DATE	2005/11/21
CHECKED BY	
DATE	
APPROVED BY	IGUMIN
DATE	2010/02/09
MATERIAL NO.	
SEE TABLE	

SCALE	2:1
DESIGN UNITS	INCH
THIRD ANGLE PROJECTION	
TITLE	LC EMI QUAD ADAPTER SNAP MOUNT
MOLEX INCORPORATED	
DOCUMENT NO.	SD-106123-0500
SHEET NO.	1 OF 1

THIS DRAWING CONTAINS INFORMATION THAT IS PROPRIETARY TO MOLEX INCORPORATED AND SHOULD NOT BE USED WITHOUT WRITTEN PERMISSION

9

8

7

6

5

4

3

2

1