



Chipsmall Limited consists of a professional team with an average of over 10 year of expertise in the distribution of electronic components. Based in Hongkong, we have already established firm and mutual-benefit business relationships with customers from,Europe,America and south Asia,supplying obsolete and hard-to-find components to meet their specific needs.

With the principle of “Quality Parts,Customers Priority,Honest Operation,and Considerate Service”,our business mainly focus on the distribution of electronic components. Line cards we deal with include Microchip,ALPS,ROHM,Xilinx,Pulse,ON,Everlight and Freescale. Main products comprise IC,Modules,Potentiometer,IC Socket,Relay,Connector.Our parts cover such applications as commercial,industrial, and automotives areas.

We are looking forward to setting up business relationship with you and hope to provide you with the best service and solution. Let us make a better world for our industry!



Contact us

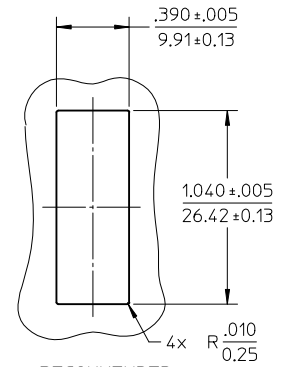
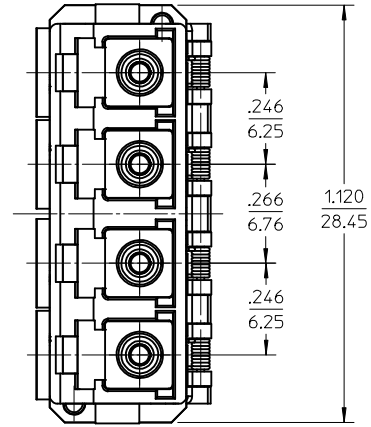
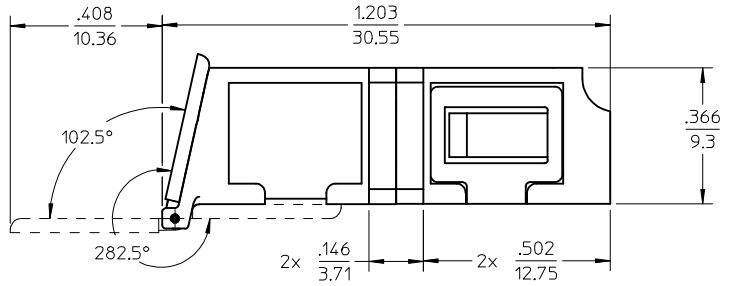
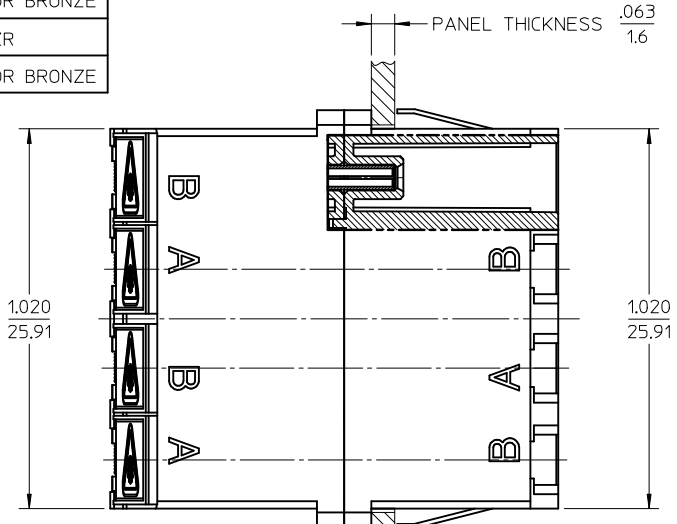
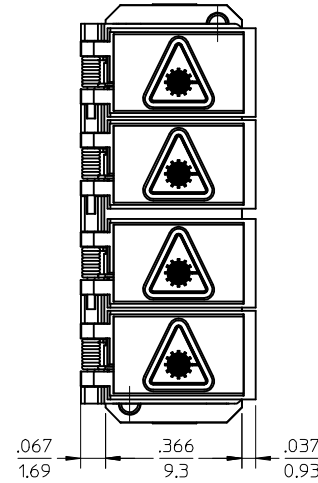
Tel: +86-755-8981 8866 Fax: +86-755-8427 6832

Email & Skype: info@chipsmall.com Web: www.chipsmall.com

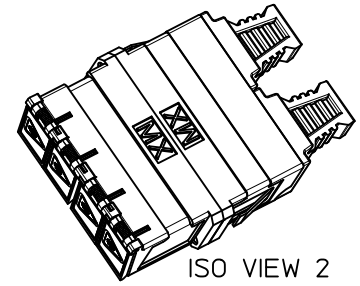
Address: A1208, Overseas Decoration Building, #122 Zhenhua RD., Futian, Shenzhen, China



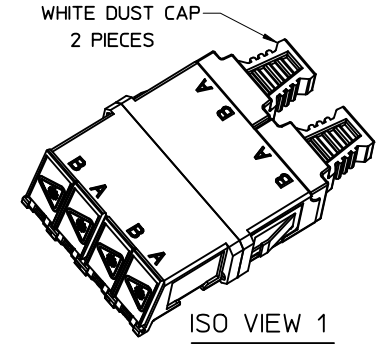
10	9	8	7	6	5	4	3	2	1
LC QUAD ADAPTER	LC QUAD ADAPTER	SPLIT SLEEVE							
P/N	COLOR	MATERIAL							
106123-0400	BLUE	ZR							
106123-1400	BEIGE	PHOSPHOR BRONZE							
106123-2400	GREEN	ZR							
106123-3400	AQUA	PHOSPHOR BRONZE							



RECOMMENDED MOUNTING PATTERN
SCALE 15:1



ISO VIEW 2
SCALE 15:1



ISO VIEW 1
SCALE 15:1

WHITE DUST CAP
2 PIECES

- NOTES:
- ALL DIMENSIONS ARE FOR REFERENCE.
 - DUST CAPS NOT SHOWN ON FRONT, BOTTOM AND RIGHT VIEW.
 - LC QUAD ADAPTER HAS SC DUPLEX ADAPTER FOOTPRINT.

ENTER DESCRIPTION EC NO: MF2013-0549 DRAWN: KPEVZNER 2013/03/06 CHKD: APPR: IGUMIN 2013/03/07 A1	QUALITY SYMBOLS F/0 F/0 F/0	GENERAL TOLERANCES (UNLESS SPECIFIED)		DIMENSION STYLE IN/MM		SCALE 3:1	DESIGN UNITS INCH	THIRD ANGLE PROJECTION	
		4 PLACES	±	---	±	---	DRAWN BY PGIBLIN	DATE 2005/11/21	TITLE LC QUAD ADAPTER WITH SHUTTERS SMALL FLANGE, SNAP MOUNT molex
		3 PLACES	±	---	±	---	CHECKED BY	DATE	
		2 PLACES	±	---	±	---	APPROVED BY	DATE	DOCUMENT NO. SD-106123-X400
1 PLACE	±	---	±	---	MATERIAL NO. SEE TABLE		SHEET NO. 1 OF 1		
0 PLACE	±	---	±	---	THIS DRAWING CONTAINS INFORMATION THAT IS PROPRIETARY TO MOLEX INCORPORATED AND SHOULD NOT BE USED WITHOUT WRITTEN PERMISSION				