



Chipsmall Limited consists of a professional team with an average of over 10 year of expertise in the distribution of electronic components. Based in Hongkong, we have already established firm and mutual-benefit business relationships with customers from,Europe,America and south Asia,supplying obsolete and hard-to-find components to meet their specific needs.

With the principle of “Quality Parts,Customers Priority,Honest Operation,and Considerate Service”,our business mainly focus on the distribution of electronic components. Line cards we deal with include Microchip,ALPS,ROHM,Xilinx,Pulse,ON,Everlight and Freescale. Main products comprise IC,Modules,Potentiometer,IC Socket,Relay,Connector.Our parts cover such applications as commercial,industrial, and automotives areas.

We are looking forward to setting up business relationship with you and hope to provide you with the best service and solution. Let us make a better world for our industry!



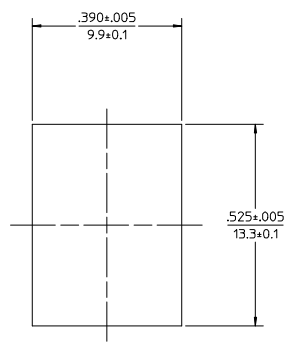
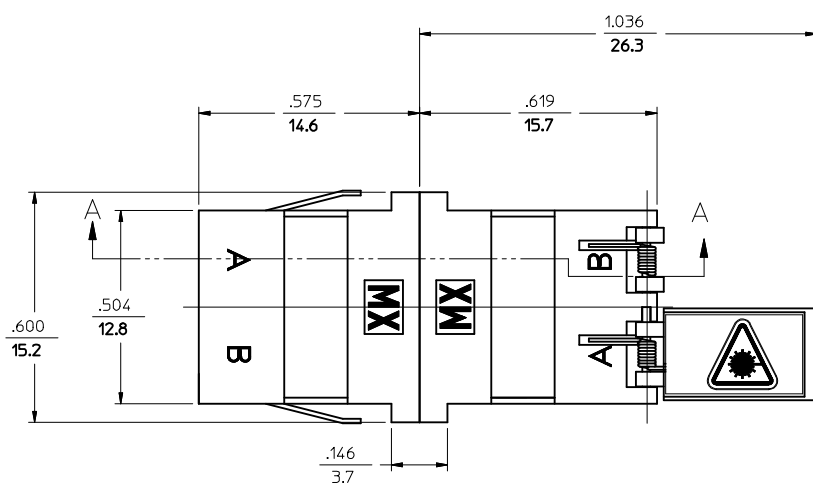
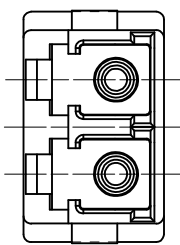
Contact us

Tel: +86-755-8981 8866 Fax: +86-755-8427 6832

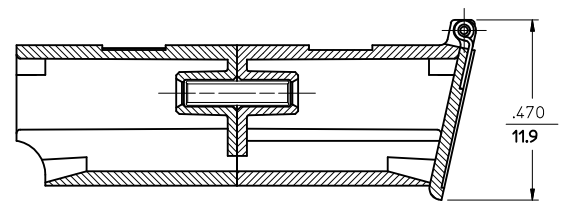
Email & Skype: info@chipsmall.com Web: www.chipsmall.com

Address: A1208, Overseas Decoration Building, #122 Zhenhua RD., Futian, Shenzhen, China

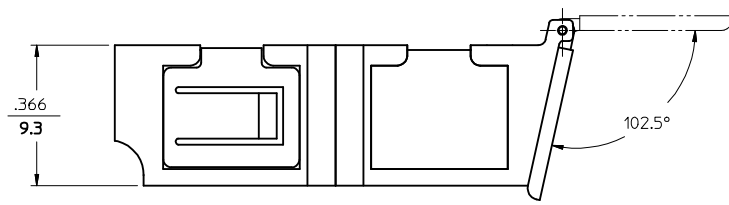




RECOMMENDED MOUNTING CUTOUT FOR .063 MAX. THICK PANEL



SECTION A-A



NOTES:

1. DIMENSIONS ARE FOR REFERENCE ONLY.
2. ADAPTER COLOR - GREEN.
3. DUST CAP IS NOT SHOWN, BUT INCLUDED.
4. LABELS WITH ADAPTER ARE PACKED IN POLY BAG.

ENTER DESCRIPTION EC NO: MF2009-0243 DRW:KPEVZNER CHKD: 2008/12/04 APPR:IGJMIN 2008/12/04 2008/12/05	QUALITY SYMBOLS ▼=0 ▽=0	GENERAL TOLERANCES (UNLESS SPECIFIED)		DIMENSION STYLE IN/MM	SCALE 1:1	DESIGN UNITS INCH	THIRD ANGLE PROJECTION	
		mm	INCH	DRAWN BY D.B.	DATE 2006/2/1	TITLE LCD ADAPTER W/SHUTTERS (SMALL FLANGE/SC FOOT PRINT) ZR SLEEVE		
				CHECKED BY	DATE			
		ANGULAR ±1/2°				APPROVED BY I.G.	DATE 2006/2/1	MOLEX MOLEX INCORPORATED
A1	REV	DRAFT WHERE APPLICABLE MUST REMAIN WITHIN DIMENSIONS		MATERIAL NO. 1061271452	DOCUMENT NO. SD-106127-1452	SHEET NO. 1 OF 1		
				THIS DRAWING CONTAINS INFORMATION THAT IS PROPRIETARY TO MOLEX INCORPORATED AND SHOULD NOT BE USED WITHOUT WRITTEN PERMISSION				