



Chipsmall Limited consists of a professional team with an average of over 10 year of expertise in the distribution of electronic components. Based in Hongkong, we have already established firm and mutual-benefit business relationships with customers from,Europe,America and south Asia,supplying obsolete and hard-to-find components to meet their specific needs.

With the principle of “Quality Parts,Customers Priority,Honest Operation,and Considerate Service”,our business mainly focus on the distribution of electronic components. Line cards we deal with include Microchip,ALPS,ROHM,Xilinx,Pulse,ON,Everlight and Freescale. Main products comprise IC,Modules,Potentiometer,IC Socket,Relay,Connector.Our parts cover such applications as commercial,industrial, and automotives areas.

We are looking forward to setting up business relationship with you and hope to provide you with the best service and solution. Let us make a better world for our industry!



Contact us

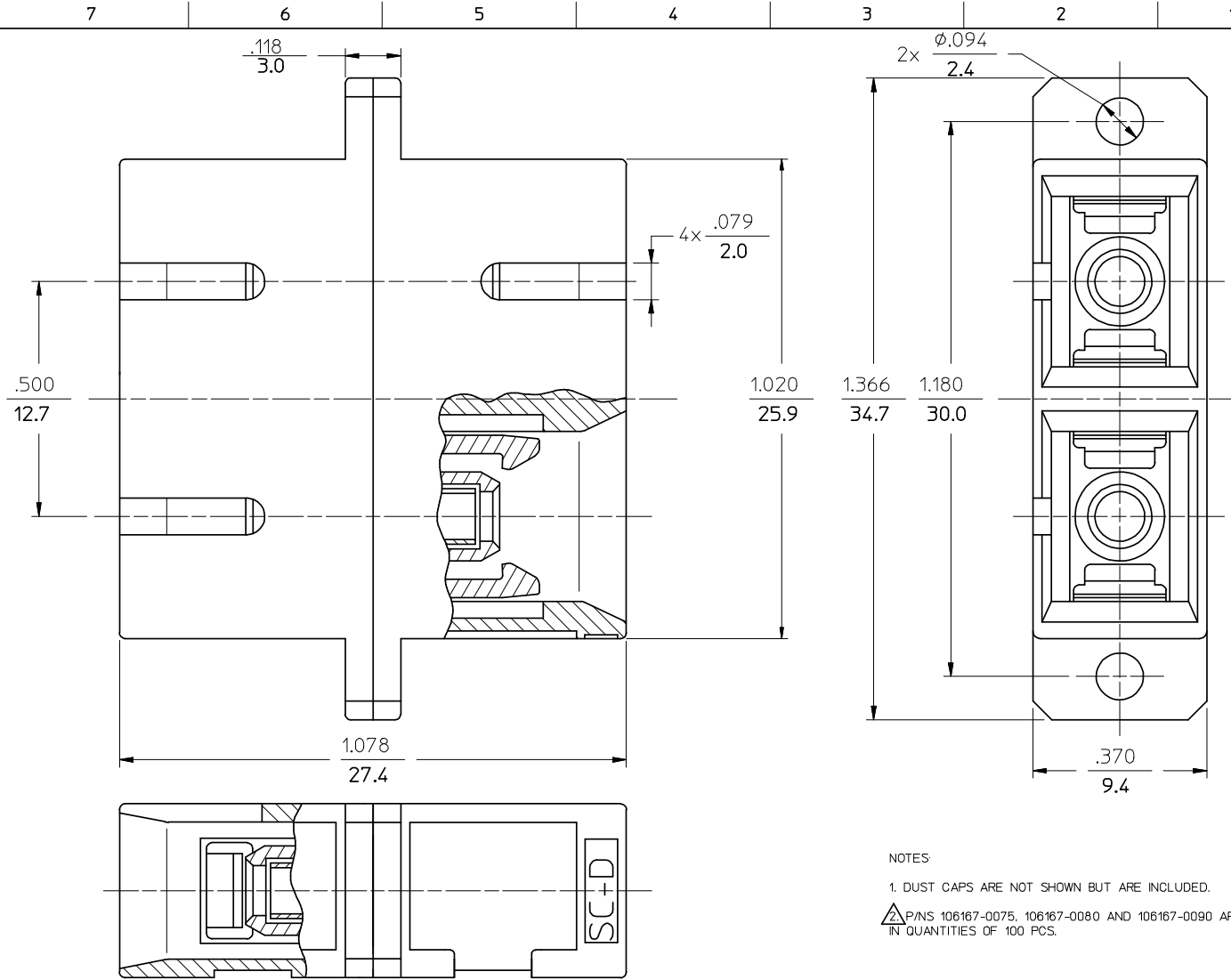
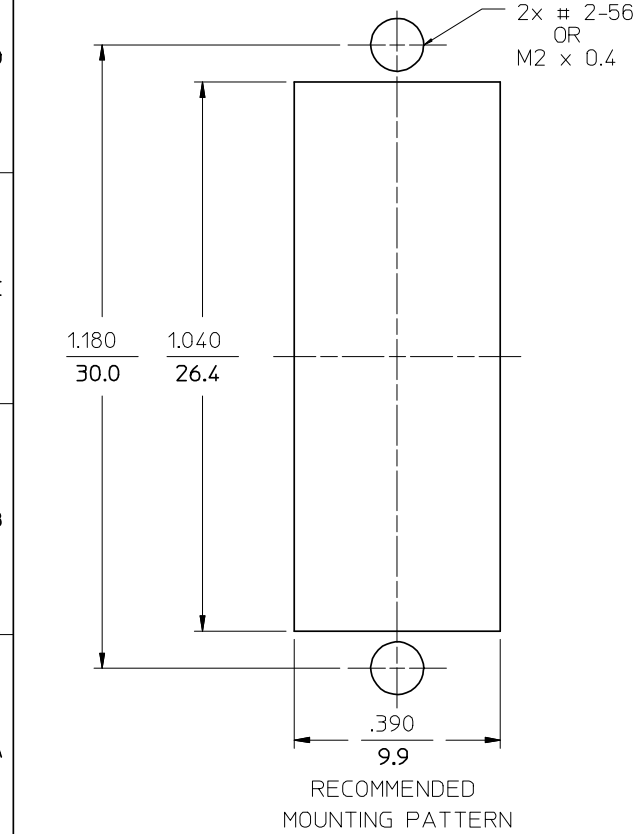
Tel: +86-755-8981 8866 Fax: +86-755-8427 6832

Email & Skype: info@chipsmall.com Web: www.chipsmall.com

Address: A1208, Overseas Decoration Building, #122 Zhenhua RD., Futian, Shenzhen, China



P/N OF ADAPTER	MATERIAL OF SLEEVE	TYPE	COLOR
106166-0000	ZR	SINGLE MODE	BLUE
106167-0000	PHOSPHOR BRONZE		
106167-0090			
106166-0010	ZR	MULTIMODE	BEIGE
106167-0010	PHOSPHOR BRONZE		BLACK
106166-0030	ZR		
106167-0030	PHOSPHOR BRONZE	SINGLE MODE	RED
106166-0040	ZR		APC
106167-0040	PHOSPHOR BRONZE		
106166-0050	ZR	MULTIMODE	AQUA
106167-0050	PHOSPHOR BRONZE		BEIGE
106167-0070			
106167-0075	PHOSPHOR BRONZE	MULTIMODE	
106167-0080			BEIGE



NOTES
 1. DUST CAPS ARE NOT SHOWN BUT ARE INCLUDED.
 2. P/N'S 106167-0075, 106167-0080 AND 106167-0090 ARE BULK PACKED IN QUANTITIES OF 100 PCS.

ENTER DESCRIPTION EC NO: MF2008-0519 DRWN: KPEVZNER CHKD: 2008/05/22 APPR: LGUMIN 2008/05/27	QUALITY SYMBOLS	GENERAL TOLERANCES (UNLESS SPECIFIED)	DIMENSION STYLE	SCALE	DESIGN UNITS	THIRD ANGLE PROJECTION
	▽=0 ▽=0	mm INCH 4 PLACES ±--- ±--- 3 PLACES ±--- ±--- 2 PLACES ±--- ±--- 1 PLACE ±--- ±--- ANGULAR ±1/2°	IN/MM	4:1	INCH	
		DRAFT WHERE APPLICABLE MUST REMAIN WITHIN DIMENSIONS	DRAWN BY DATE	TITLE		
			RPACIFICI 2006/01/24	DUPLX ADAPTER (SC-D)		
			CHECKED BY DATE	MOLEX INCORPORATED		
			APPROVED BY DATE	DOCUMENT NO. SD-10616X-00X0		
			MATERIAL NO. SEE TABLE	SHEET NO. 1 OF 1		
			SIZE B	THIS DRAWING CONTAINS INFORMATION THAT IS PROPRIETARY TO MOLEX INCORPORATED AND SHOULD NOT BE USED WITHOUT WRITTEN PERMISSION		