



Chipsmall Limited consists of a professional team with an average of over 10 year of expertise in the distribution of electronic components. Based in Hongkong, we have already established firm and mutual-benefit business relationships with customers from,Europe,America and south Asia,supplying obsolete and hard-to-find components to meet their specific needs.

With the principle of "Quality Parts,Customers Priority,Honest Operation,and Considerate Service",our business mainly focus on the distribution of electronic components. Line cards we deal with include Microchip,ALPS,ROHM,Xilinx,Pulse,ON,Everlight and Freescale. Main products comprise IC,Modules,Potentiometer,IC Socket,Relay,Connector.Our parts cover such applications as commercial,industrial, and automotives areas.

We are looking forward to setting up business relationship with you and hope to provide you with the best service and solution. Let us make a better world for our industry!



Contact us

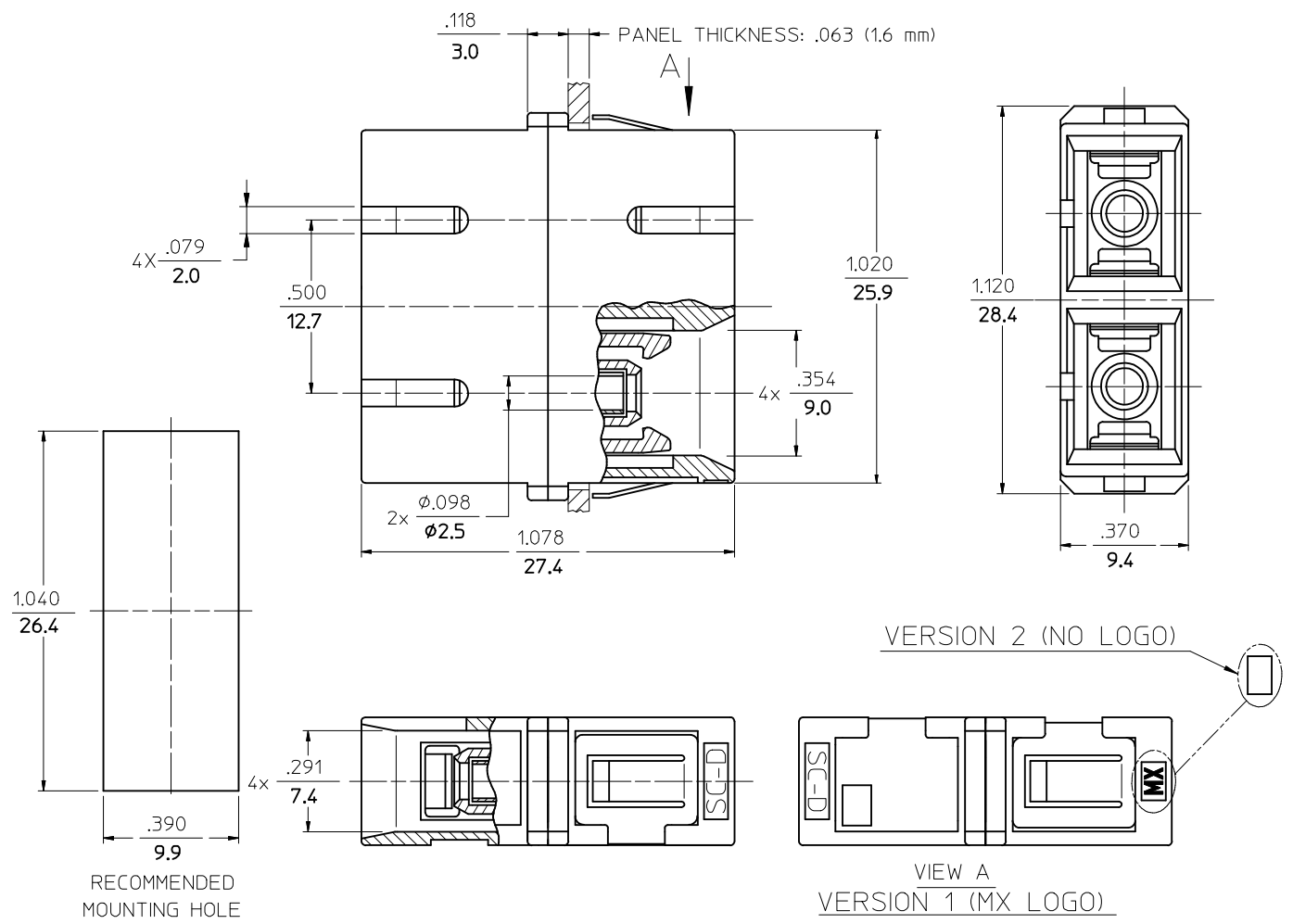
Tel: +86-755-8981 8866 Fax: +86-755-8427 6832

Email & Skype: info@chipsmall.com Web: www.chipsmall.com

Address: A1208, Overseas Decoration Building, #122 Zhenhua RD., Futian, Shenzhen, China



| P/N OF ADAPTER | MATERIAL OF SLEEVE | TYPE | COLOR | LOGO |
|----------------|--------------------|-------------|-------|------|
| 106166-0100 | Zr | SINGLE MODE | BLUE | MX |
| 106166-0103 | Zr | | | |
| 106166-0120 | Zr | | | |
| 106167-0100 | PHOSPHOR BRONZE | MULTIMODE | BEIGE | |
| *106167-0185 | | | AQUA | |
| 106166-0110 | Zr | MULTIMODE | BLACK | |
| 106167-0110 | PHOSPHOR BRONZE | | | |
| 106167-0180 | Zr | SINGLE MODE | RED | |
| 106167-0130 | PHOSPHOR BRONZE | | | |
| 106166-0140 | Zr | APC | GREEN | |
| 106167-0140 | PHOSPHOR BRONZE | | | |
| 106166-0150 | Zr | SINGLE MODE | BLUE | |
| *106166-0152 | | | BLUE | |
| *106166-0191 | PHOSPHOR BRONZE | MULTIMODE | AQUA | NONE |
| 106167-0150 | | | BEIGE | MX |
| *106166-0185 | Zr | SINGLE MODE | BLUE | NONE |
| *106166-0190 | Zr | SINGLE MODE | BLUE | NONE |
| *106167-9110 | PHOSPHOR BRONZE | MULTIMODE | AQUA | MX |
| *106167-0190 | | | BEIGE | NONE |
| *106167-0200 | | | BEIGE | NONE |



NOTES:
 1. P/NS STARTING WITH THE (*) ARE BULK PACKED IN QUANTITIES OF 100pcs.
 2. DUST CAPS ARE NOT SHOWN BUT INCLUDED.

| | | | | | | |
|--|--|---|---|-----------------------------------|--------------|------------------------|
| ENTER DESCRIPTION EC NO: MF2010-0028 DR: WANKPEVNER CHKD: 2009/07/23 APPR: LGUMIN 2009/07/23 | QUALITY SYMBOLS | GENERAL TOLERANCES (UNLESS SPECIFIED) | DIMENSION STYLE | SCALE | DESIGN UNITS | THIRD ANGLE PROJECTION |
| | ▼=0 ∇=0 | mm INCH 4 PLACES ± --- ± --- 3 PLACES ± --- ± --- 2 PLACES ± --- ± --- 1 PLACE ± --- ± --- ANGULAR ±1/2° | IN/MM | 1:1 | INCH | |
| | DRAFT WHERE APPLICABLE MUST REMAIN WITHIN DIMENSIONS | DRAWN BY: PGIBLIN DATE: 2005/10/07 CHECKED BY: _____ DATE: _____ APPROVED BY: _____ DATE: _____ | TITLE | DUPLEX ADAPTER (SC-D, FLANGELESS) | | |
| | | MATERIAL NO. SEE TABLE SIZE B | DOCUMENT NO. SD-10616Y-01Y0 SHEET NO. 1 OF 1 | MOLEX INCORPORATED | | |