



Chipsmall Limited consists of a professional team with an average of over 10 year of expertise in the distribution of electronic components. Based in Hongkong, we have already established firm and mutual-benefit business relationships with customers from,Europe,America and south Asia,supplying obsolete and hard-to-find components to meet their specific needs.

With the principle of “Quality Parts,Customers Priority,Honest Operation,and Considerate Service”,our business mainly focus on the distribution of electronic components. Line cards we deal with include Microchip,ALPS,ROHM,Xilinx,Pulse,ON,Everlight and Freescale. Main products comprise IC,Modules,Potentiometer,IC Socket,Relay,Connector.Our parts cover such applications as commercial,industrial, and automotives areas.

We are looking forward to setting up business relationship with you and hope to provide you with the best service and solution. Let us make a better world for our industry!



## Contact us

Tel: +86-755-8981 8866 Fax: +86-755-8427 6832

Email & Skype: info@chipsmall.com Web: www.chipsmall.com

Address: A1208, Overseas Decoration Building, #122 Zhenhua RD., Futian, Shenzhen, China



# 10600 series

Professional toggle switches •  
threaded bushing Ø 10 mm



## DISTINCTIVE FEATURES

Threaded bushing dia. 10 (.393)

CECC approved

Available with black finish



## ELECTRICAL SPECIFICATIONS

- Max. current/voltage rating with resistive load : 3 A 24 VDC
- Minimum load : 100  $\mu$ A 10 mV
- Initial contact resistance : 10 m $\Omega$  max.
- Insulation resistance : 1,000 M $\Omega$  min. at 500 VDC
- Dielectric strength :  
1,000 Veff. 50 Hz min. between terminals of the same pole  
2,000 Veff. 50 Hz min. between terminals and frame  
2,000 Veff. 50 Hz min. between terminals of adjacent poles
- Electrical life : 50,000 cycles



## GENERAL SPECIFICATIONS

- Torque : 1.50 Nm (1.106 Ft.lb) max. applied to nut
- Operating temperature : -40 °C to +85 °C (-40 °F to +185 °F)
- Max. panel thickness : 4 mm (.157)



## MATERIALS

- Case : diallylphthalate (DAP) or high temperature plastic material (UL94-V0)
- Actuator : brass, nickel plated
- Bushing : brass, nickel plated
- Housing : stainless steel
- Contacts :  
- silver  
- gold plated silver
- Terminal seal : epoxy

The company reserves the right to change specifications without notice.



# 10600 series

Professional toggle switches • threaded bushing Ø 10 mm

## AGENCY APPROVAL



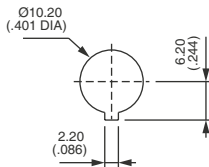
CECC 96201-007

**Availability** : consult factory for details of approved models.

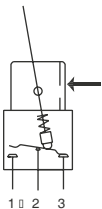
**Marking** : to order switches marked CECC, add "CECC" to model number.



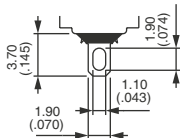
## PANEL CUT-OUT



## ELECTRICAL FUNCTIONS



## TERMINALS



## ABOUT THIS SERIES

Complete part numbers are shown on the following page.



**Sealing boots** are available to protect the switches against dust and water. See "Sealing boots" section of website.



**Mounting accessories** : standard hardware supplied with all models : 1 knurled nut, 1 hex nut, 1 locking ring and 1 lockwasher. It is presented in the "Hardware" section of website.



# 10600 series

Professional toggle switches • threaded bushing Ø 10 mm

## SOLDER LUG TERMINALS - 2 POSITIONS SINGLE POLE



Silver contacts	Gold plated silver contacts	II	I
106362103	106361175	1-3	1-2
106322103	106321175	ON	ON
		ON	MOM

## SOLDER LUG TERMINALS - 2 POSITIONS DOUBLE POLE



Silver contacts	Gold plated silver contacts	II	I
106462103	106461175	2-3	2-1
106422103	106421175	5-6	5-4
		ON	ON
		ON	MOM

## SOLDER LUG TERMINALS - 3 POSITIONS SINGLE POLE



Silver contacts	Gold plated silver contacts	III	II	I
106392103	106391175	2-3		2-1
106372103	106371175	ON	OFF	ON
106382103	106381175	MOM	OFF	MOM
		ON	OFF	MOM

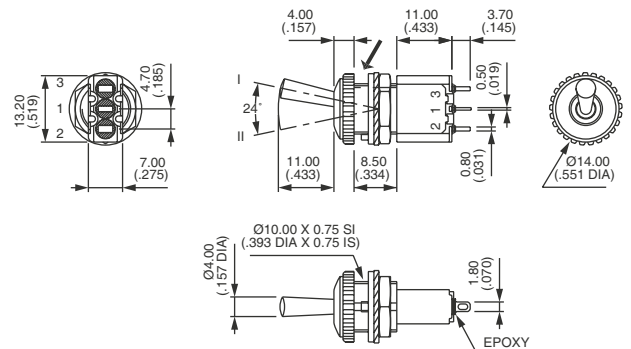
## SOLDER LUG TERMINALS - 3 POSITIONS DOUBLE POLE



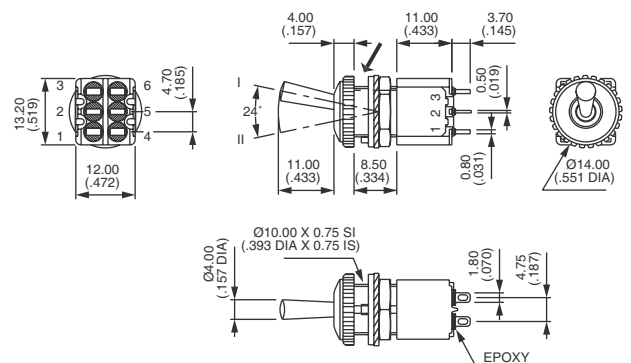
Silver contacts	Gold plated silver contacts	III	II	I
106492103	106491175	2-3		2-1
106472103	106471175	5-6		5-4
106482103	106481175	ON	OFF	MOM
106440886*	106440944*	ON	ON	ON
			(2-3)	
			(5-4)	

\* Function 4 : SP in DP case. Jumper between terminals 2 and 4 to be wired by the user.

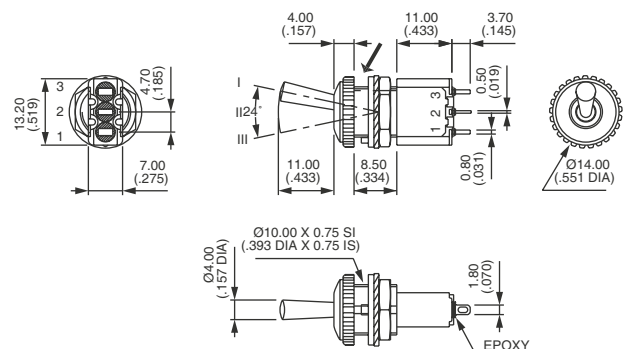
→ KEYWAY



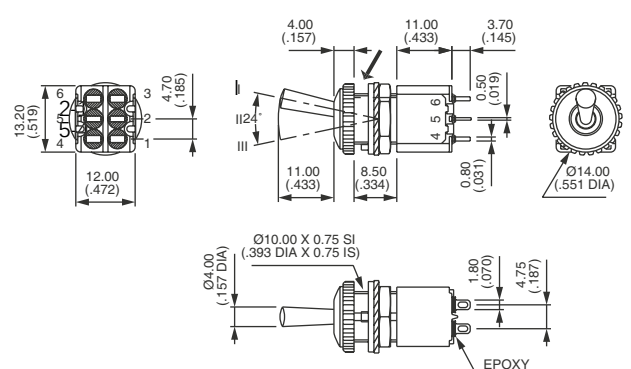
→ KEYWAY



→ KEYWAY



→ KEYWAY



# 10600 series

Professional toggle switches •  
threaded bushing Ø 10 mm

## AGENCY APPROVALS

BASIC P/N

**CECC** CECC 96401-001

**Blank** No agency approval required.

**Availability** : consult factory for details of approved models.

**Marking** : to order switches marked CECC, please complete above box with CECC.