



Chipsmall Limited consists of a professional team with an average of over 10 year of expertise in the distribution of electronic components. Based in Hongkong, we have already established firm and mutual-benefit business relationships with customers from,Europe,America and south Asia,supplying obsolete and hard-to-find components to meet their specific needs.

With the principle of “Quality Parts,Customers Priority,Honest Operation,and Considerate Service”,our business mainly focus on the distribution of electronic components. Line cards we deal with include Microchip,ALPS,ROHM,Xilinx,Pulse,ON,Everlight and Freescale. Main products comprise IC,Modules,Potentiometer,IC Socket,Relay,Connector.Our parts cover such applications as commercial,industrial, and automotives areas.

We are looking forward to setting up business relationship with you and hope to provide you with the best service and solution. Let us make a better world for our industry!



Contact us

Tel: +86-755-8981 8866 Fax: +86-755-8427 6832

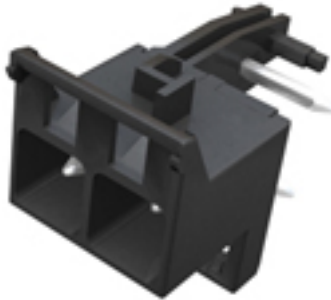
Email & Skype: info@chipsmall.com Web: www.chipsmall.com

Address: A1208, Overseas Decoration Building, #122 Zhenhua RD., Futian, Shenzhen, China



CH20M SHL-SMT 5.00/02GR 4.2BX

Weidmüller Interface GmbH & Co. KG
 Klingenbergstraße 16
 D-32758 Detmold
 Germany
 Fon: +49 5231 14-0
 Fax: +49 5231 14-2083
 www.weidmueller.com



Naturally, the CH20M system also shows its perfection in the peripheral interface.

If you are taking into consideration design options, processing, usability, reliability and security, then pin headers and connectors are just as critical in the real world as the entire system.

In every sector, the connection technology is at the top of its class.

- **100% non-interchangeable** the unique, captive "Auto-Set" encoding ensures a misconnection-proof assignment of the connections.
- **100% safe** Touch protection for the pin header and socket block on both sides
- **100% efficient** All THR pin headers are reflow compatible

General ordering data

Order No.	1069550000
Part designation	SHL-SMT 5.00/02GR 4.2BX
Version	PCB plug-in connector, male header, 5 mm, No. of poles: 2, Solder pin length: 4.2 mm, tinned, black
GTIN (EAN)	4032248825110
Qty.	156 pc(s).
Packaging	Box

**CH20M
SHL-SMT 5.00/02GR 4.2BX**

Weidmüller Interface GmbH & Co. KG
 Klingenbergstraße 16
 D-32758 Detmold
 Germany
 Fon: +49 5231 14-0
 Fax: +49 5231 14-2083
 www.weidmueller.com

Technical data
Dimensions (1)

Length	22 mm	Width	10.4 mm
Height	14.4 mm		

System parameters

Version	Connection element, right	No. of connections	2
Type of contact to PCB	Solder connection, direct	Tolerance for the PCB shape	±0.15 mm
Contact to terminal rail	No	Encapsulation option	No

Material data

Flammability class UL 94	V-0	Insulating material	LCP
Colour	black	Contact material	Copper alloy
Contact surface	tinned	Highest continuous operating temperature, min.	-20 °C
Highest continuous operating temperature, max.	85 °C		

Rating data to DIN IEC

Rated current, max. No. of poles (Tu=20°C)	10 A	Rated current, no. of poles (Tu=40°C), max.	9 A
Rated voltage for overvoltage class/pollution severity II/2	400 V	Rated voltage for overvoltage class/pollution severity III/2	320 V
Rated voltage at overvoltage category/pollution degree III/3	250 V	Rated impulse withstand voltage for overvoltage class/pollution severity II/2	4 kV
Rated impulse withstand voltage for overvoltage class/pollution severity III/2	4 kV	Rated impulse withstand voltage for overvoltage class/pollution severity III/3	4 kV

Approvals

Approvals institutes

Classifications

eClass 6.0 27-26-07-04