



Chipsmall Limited consists of a professional team with an average of over 10 year of expertise in the distribution of electronic components. Based in Hongkong, we have already established firm and mutual-benefit business relationships with customers from,Europe,America and south Asia,supplying obsolete and hard-to-find components to meet their specific needs.

With the principle of “Quality Parts,Customers Priority,Honest Operation,and Considerate Service”,our business mainly focus on the distribution of electronic components. Line cards we deal with include Microchip,ALPS,ROHM,Xilinx,Pulse,ON,Everlight and Freescale. Main products comprise IC,Modules,Potentiometer,IC Socket,Relay,Connector.Our parts cover such applications as commercial,industrial, and automotives areas.

We are looking forward to setting up business relationship with you and hope to provide you with the best service and solution. Let us make a better world for our industry!



Contact us

Tel: +86-755-8981 8866 Fax: +86-755-8427 6832

Email & Skype: info@chipsmall.com Web: www.chipsmall.com

Address: A1208, Overseas Decoration Building, #122 Zhenhua RD., Futian, Shenzhen, China

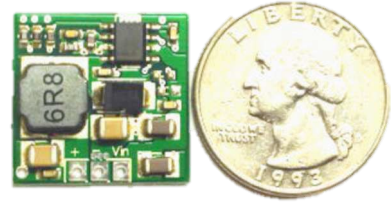


PNMini-2A High-performance Easy-to-use Mini Power Modules for DIY Electronic Projects

With Adjustable Positive/Negative Output by Speedy Lab

Related Products:

- PNMini-500mA – 28V input, 500mA positive/negative DC/DC step down converter
- PMMini-2A – 28V input, 2A positive/negative DC/DC step down converter

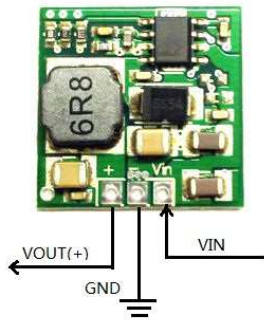


PNMini2A: +3.3V/-3.3V, +5V/-5V, +12V/-12V Output with Eco-mode and High Light Load Efficiency

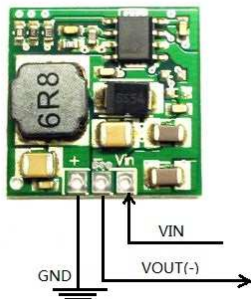
The PNMini2A power module is a high efficiency converter (up to 92%) capable of driving up to 2A load without using heat sink. The PNMini2A is available in an innovative small PCB that enhances thermal performance and allows for hand soldering or plugin use. It requires no external components. It is a reliable, robust and allows startup into a pre-biased output. Other significant features like better output accuracy ($\pm 1\%$) and lower standby current of 0.3mA makes this module an ideal solution for many applications.

Key Features

- One Module Supports Positive/Negative Output
- High Efficiency at Light Loads 85%@Vin=7V
- 3.5V to 28V for Positive Input Voltage Range
- 2.7V to 27V for Negative Input Voltage Range
- Supports up to 2A Continuous Output Current (no heat sink required)
- Typical 5 μ A Shutdown Quiescent Current
- Slow Start Limits Inrush Currents
- UVLO Protection
- Overvoltage Transient Protection
- Thermal Shutdown Protection
- Cycle-by-cycle Current Limit enables Short Circuit Protection
- Simple Configuration



Positive Output Configuration



Negative Output Configuration

Applications

- Consumer Applications such as Set-Top Boxes, CPE Equipment, LCD Displays, Peripherals, and Battery Chargers
- Portable Electronics with Sleep Mode
- Industrial and Car Audio Power Supplies
- DIY Electronic Projects

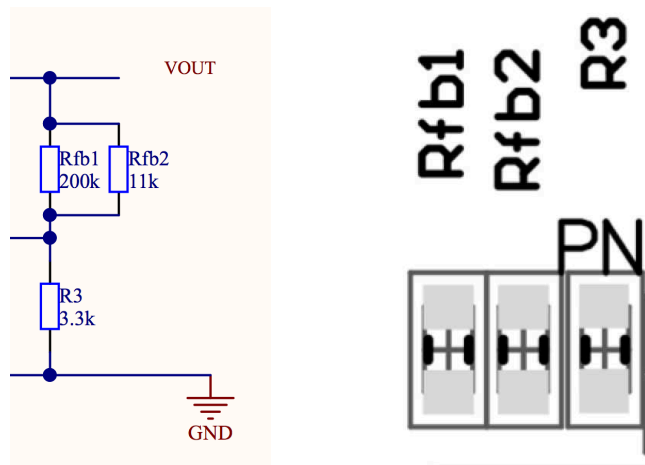
Output Voltage Programming

The output voltage can be programmed by three resistors: Rfb1, Rfb2, and R3. The output voltage is calculated by the following equation:

$$V_{out} = 0.8V \times \left(\frac{Rfb1 || Rfb2}{R3} + 1 \right) = 0.8V \times \left(\frac{Rfb1 \times Rfb2}{R3 \times (Rfb1 + Rfb2)} + 1 \right)$$

Only one resistor is needed for (Rfb1 | Rfb2). Two footprints are provided here to add flexibility in resistor value selection.

The three resistors are connected at the output terminal. They are located at the upper right corner on the assembly drawing.



Below are some possible resistor values for different output voltages:

Output Voltage (V)	R3 (ohm)	Rfb1 Rfb2 (ohm)
0.9	80.6k	10k
1.8	8.06k	10k
2.5	4.7k	10k
3.3	3.24k	10k
5	1.91k	10k
9	975	10k
12	714	10k

Typical Electrical Characteristics (Room Temperature)

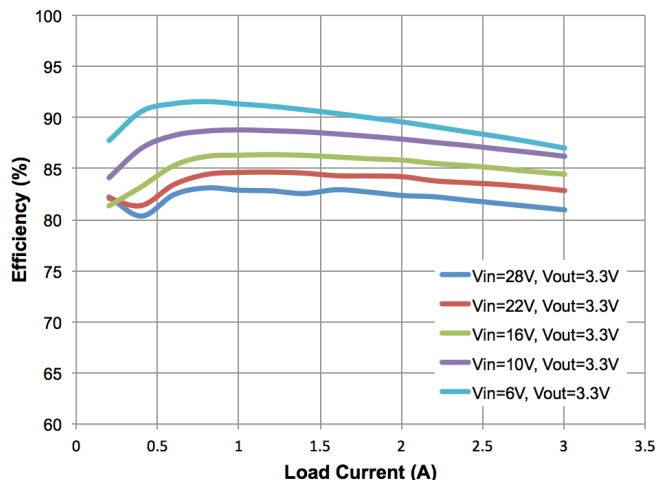


Figure 1. Efficiency at 3.3V output

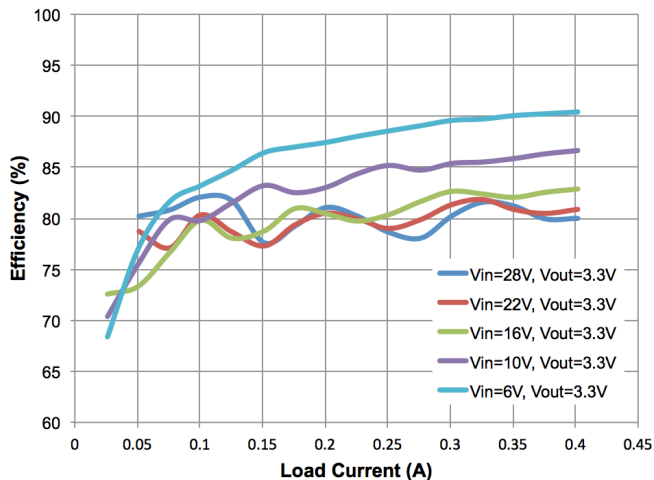


Figure 2. Light load efficiency at 3.3V output

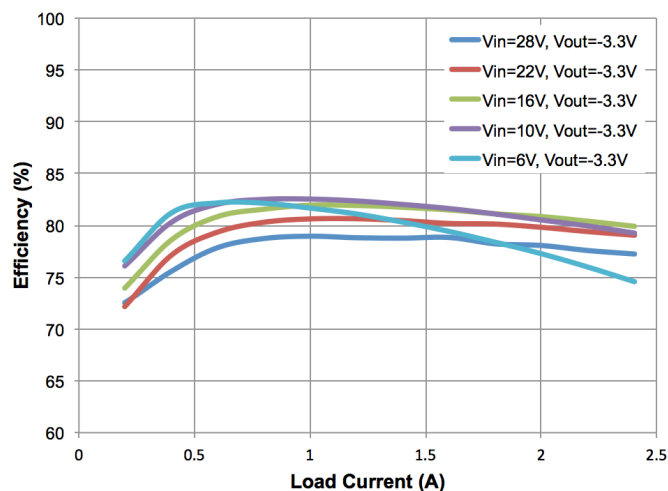


Figure 3. Efficiency at -3.3V output

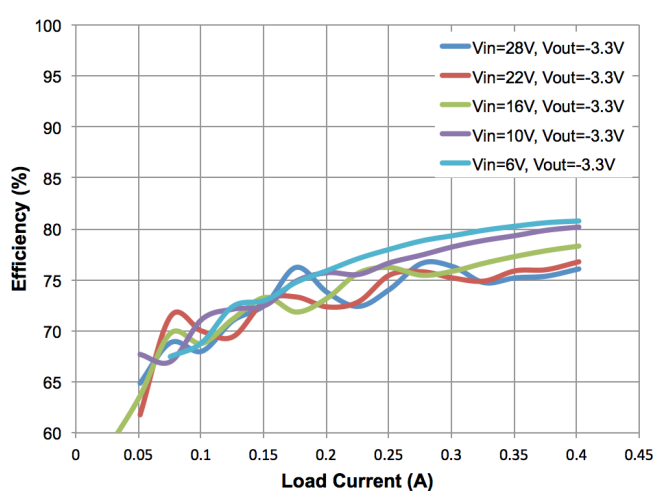


Figure 4. Light load efficiency at -3.3V output

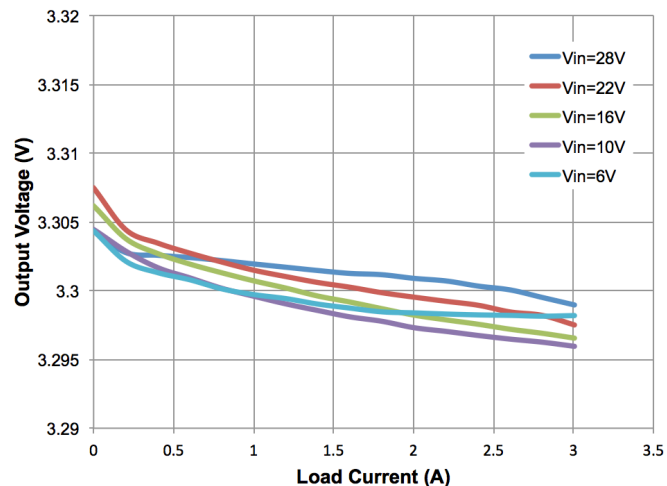


Figure 5. Load regulation at 3.3V output

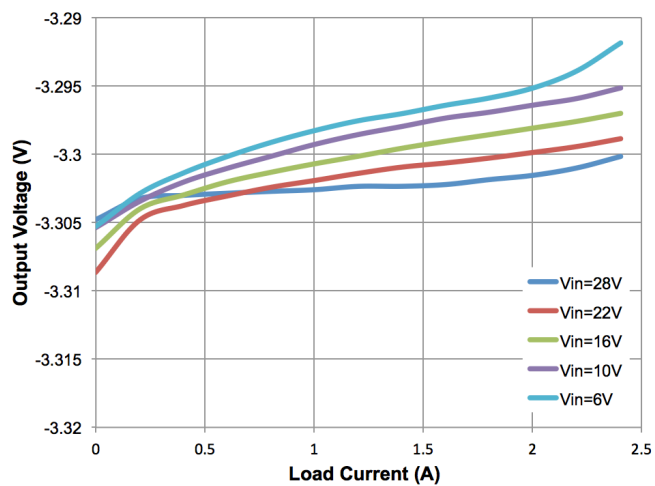


Figure 6. Load regulation at -3.3V output

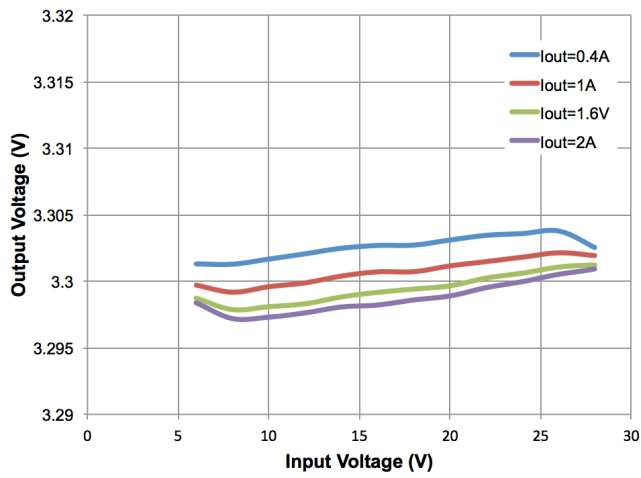


Figure 7. Line regulation at 3.3V output

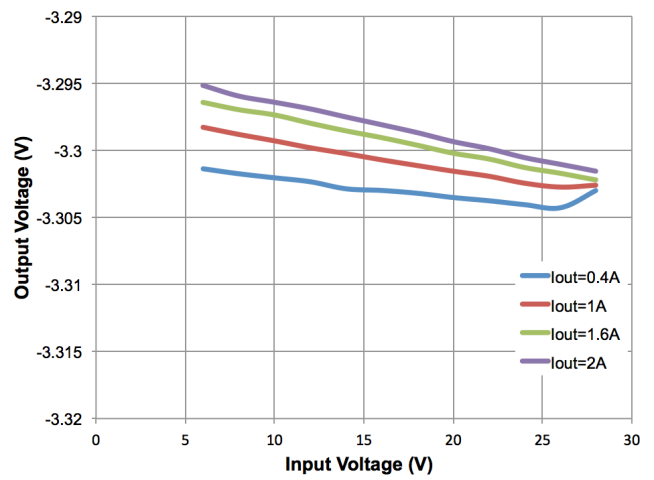


Figure 8. Line regulation at -3.3V output

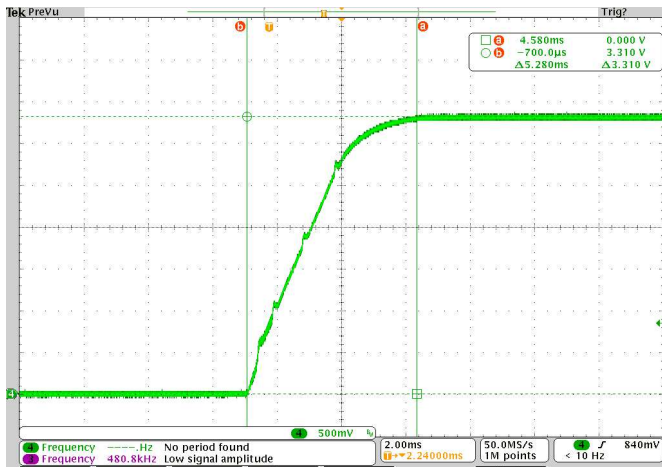


Figure 9. Soft start at Vin=7V, Iout=2A

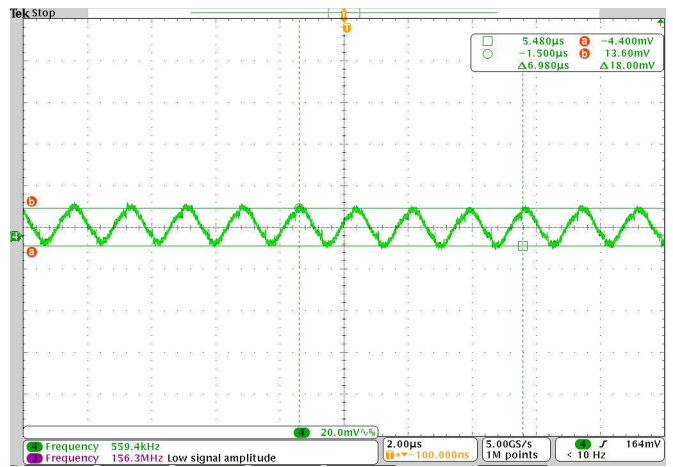


Figure 10. Vout ripple at Vin=7V, Vout=2A

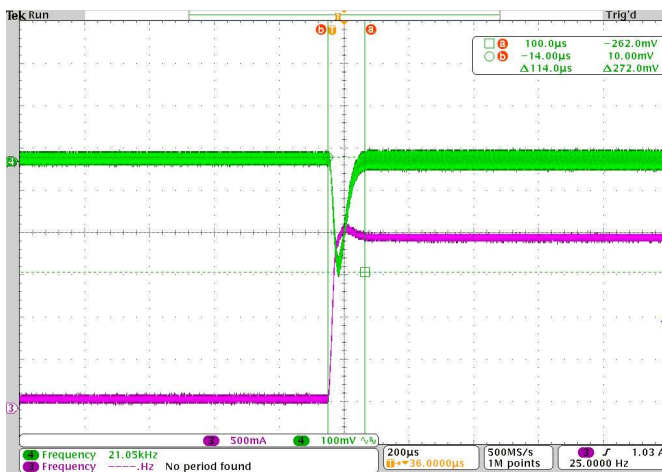


Figure 11. Load transient at Vin=25V, Iout=0~2A

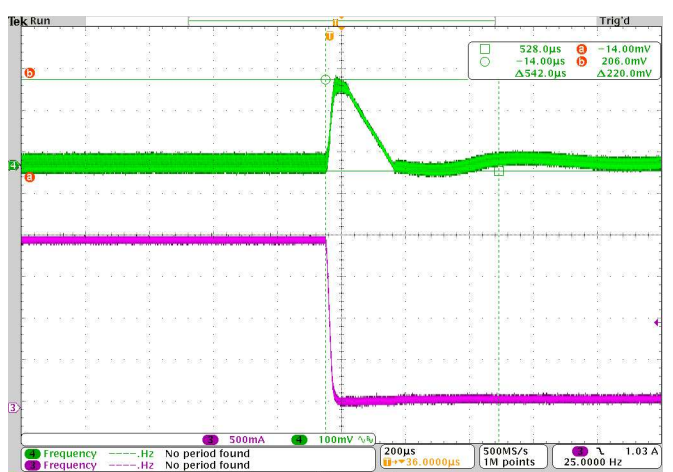
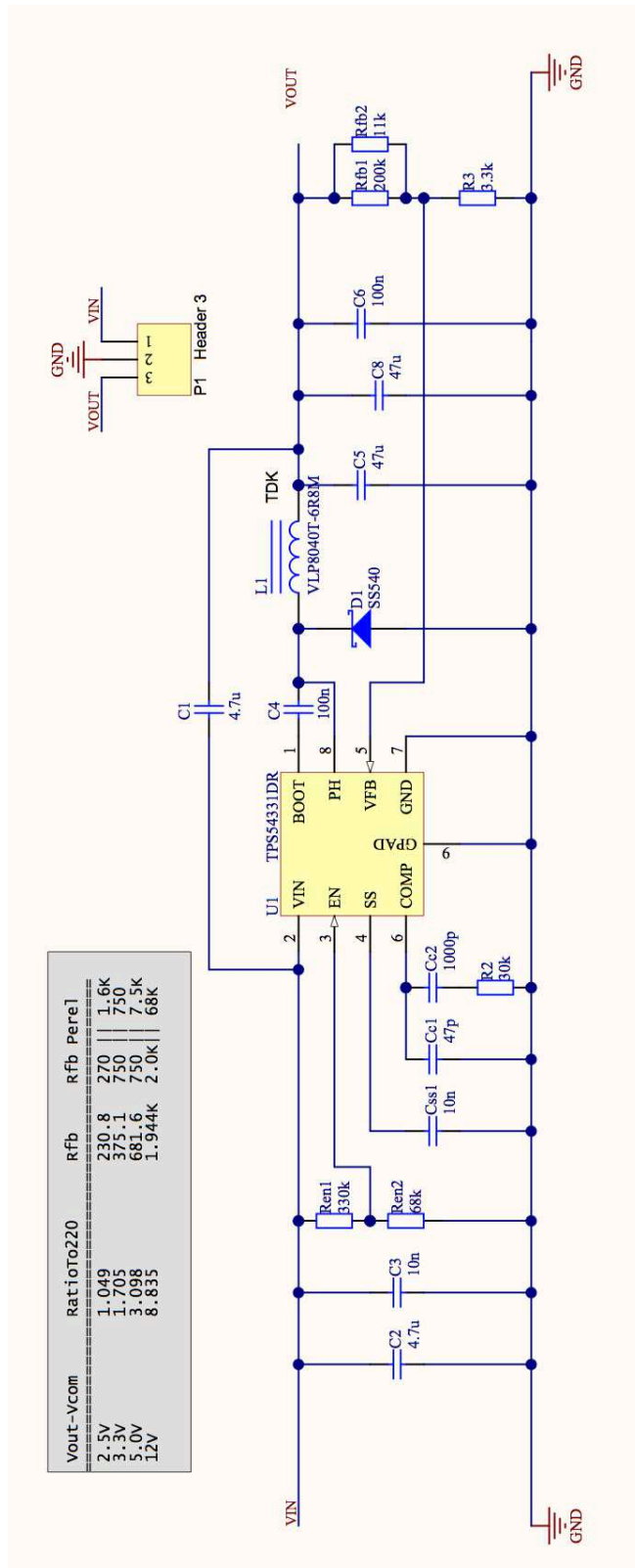
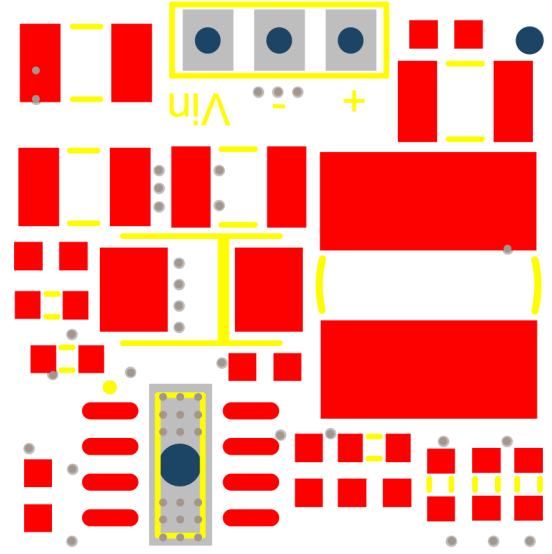
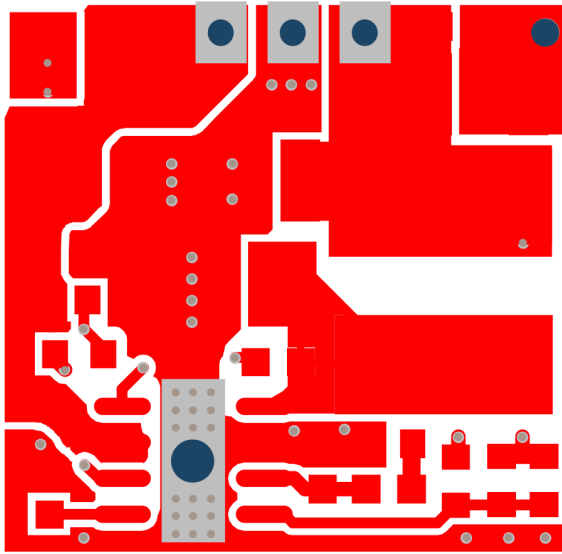


Figure 12. Load transient at Vin=25V, Iout=2~0A

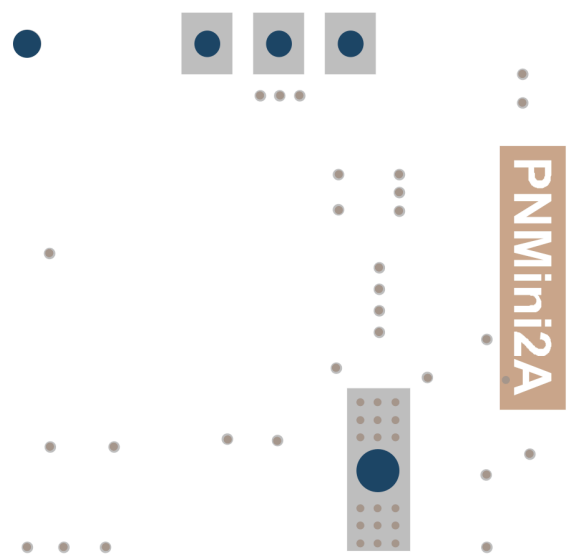
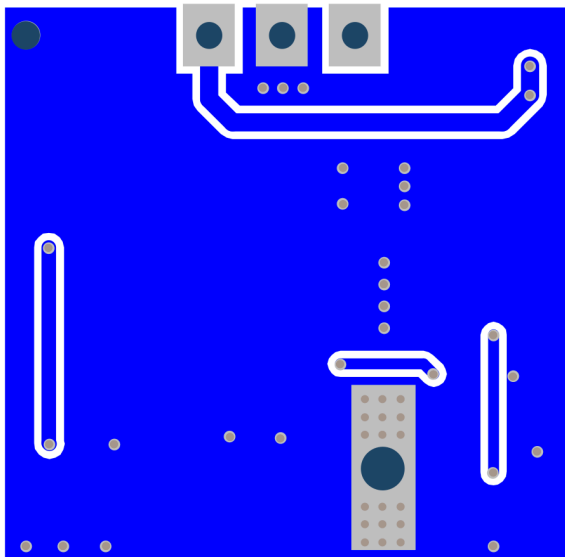
Schematic



Layout (Top)



Layout (Bottom)



BOM

NO.	Description	Designator	Manufacturer
1	GRM31CR71H475KA12L 4.7u 1206 Capacitor 50V X7R	C1,C2	MURATA
2	CL10B103KB8NNNC 10n 0603 Capacitor 50V X7R	C3,Css1	SAMSUNG
3	CL10B104KB8NNNC 100n 0603 Capacitor 50V X7R	C4,C6	SAMSUNG
4	CL10C470JB8NNNC 47p 0603 Capacitor 50V X7R	Cc1	SAMSUNG
5	CL10B102KB8NNNC 1000p 0603 Capacitor 50V X7R	Cc2	SAMSUNG
6	2.54mm, Header, 3-Pin	P1 Do not populate	
7	2.54mm, Header, 3-Pin	P1 Do not populate	
8	30k 0603 Resistor,1%	R2	Super ohms
9	3.3k 0603 Resistor,1%	R3	Super ohms
10	330k 0603 Resistor,1%	Ren1 Do not populate	Super ohms
11	68k 0603 Resistor,1%	Ren2 Do not populate	Super ohms
12	200k 0603 Resistor,1%	Rfb1	Super ohms
13	11k 0603 Resistor,1%	Rfb2	Super ohms
14	3.5A 6.8uH 7.4mm*7.4mm*3.5mm HPC8040B-6R8Y	L1	TaiTech
16	SMB SS54 SMB 3.5mm*4.8mm	D1	MDD
18	GRM32ER61C476KE15L x5r 16V 1210 47uF	C5,C8	MURATA
19	TPS54331D	U1	TI

Assembly Drawing

