



Chipsmall Limited consists of a professional team with an average of over 10 year of expertise in the distribution of electronic components. Based in Hongkong, we have already established firm and mutual-benefit business relationships with customers from,Europe,America and south Asia,supplying obsolete and hard-to-find components to meet their specific needs.

With the principle of "Quality Parts,Customers Priority,Honest Operation,and Considerate Service",our business mainly focus on the distribution of electronic components. Line cards we deal with include Microchip,ALPS,ROHM,Xilinx,Pulse,ON,Everlight and Freescale. Main products comprise IC,Modules,Potentiometer,IC Socket,Relay,Connector.Our parts cover such applications as commercial,industrial, and automotives areas.

We are looking forward to setting up business relationship with you and hope to provide you with the best service and solution. Let us make a better world for our industry!



Contact us

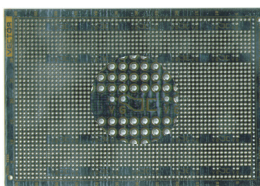
Tel: +86-755-8981 8866 Fax: +86-755-8427 6832

Email & Skype: info@chipsmall.com Web: www.chipsmall.com

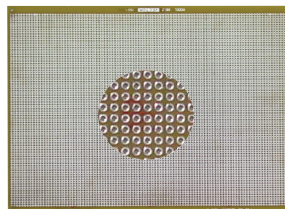
Address: A1208, Overseas Decoration Building, #122 Zhenhua RD., Futian, Shenzhen, China



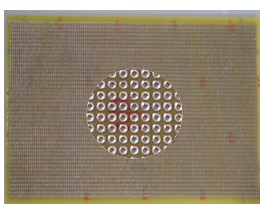
Round Pads-Per-Hole with 0.042" Holes, .100" Grid



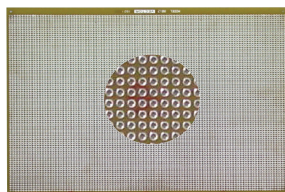
8008 4.5"Hx6.5"L x .062" TH
 0.100" grid, UNIQUE circuit pattern features full voltage and ground planes on both sides with isolated plated-thru holes. 0.080" solder pads and Surface Mount cap positions for discreet decoupling capacitors. Solder coated pattern.
 Material: FR4
 WW Terminals: T44, T46, T49, T68
 Solder Terminals: T42-1
 WW Socket Pin: R32



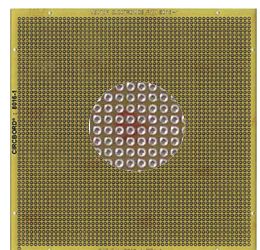
8012 9.2"Hx11.0"L x .062" TH
 0.100" grid Pad-Per-Hole Pattern. .042" holes plated thru with .080" isolated solder pad around each hole on both sides.
 16-Pin DIP= 72.
 Material: FR4.
 WW Terminals: T44, T46, T49, T68.
 Solder Terminals: T42-1, K24C
 WW Socket Pin: R32



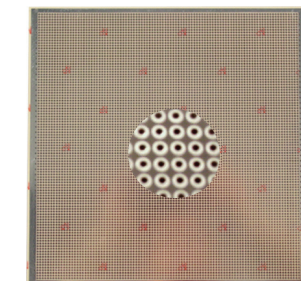
8006 5.0"Hx13.25"L x .062" TH
 0.100" grid Pad-Per-Hole Pattern copper plated-thru holes both sides .042" holes with .080" isolated solder pad around each hole on both sides
 16-Pin DIP= 154
 Material: FR4 Epoxy Glass
 WW Terminals: T44, T46, T49, T68
 Solder Terminals: T42-1
 WW Socket Pin: R32



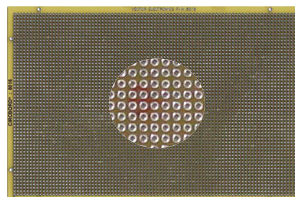
8013 10.5"Hx18.0"L x .062" TH
 0.100" grid Pad-Per-Hole Pattern on both sides. Isolated 0.080" pads with 0.042" holes plated-thru copper. Unrestricted component placement.
 Solder coated pattern
 16-Pin DIP= 175
 Material: FR4.
 WW Terminals: T44, T46, T49, T68.
 Solder Terminals: T42-1
 WW Socket Pin: R32



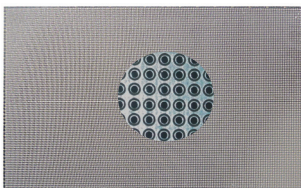
8016-1 6.0"H x 6.0"L x .062" TH
 0.100" grid Pad-Per-Hole Pattern on one side only, 0.042" holes
 Small economical size.
 Solder coated pattern
 Material: FR4
 WW Terminals: T44, T46, T49, T68
 Solder Terminals: T42-1
 WW Socket Pin: R32



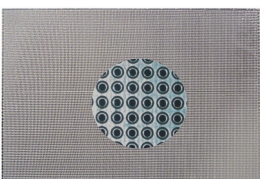
106P106-1 10.6"Hx10.6"L .062" TH
 0.100" grid Pad-Per-Hole & peripheral Ground Plane on both sides .042" holes not plated thru with .080" isolated solder pad around each hole
 16-Pin DIP= 275
 Material: CEM-1
 WW Terminals: T44, T46, T49, T68
 Solder Terminals: T42-1
 WW Socket Pin: R32



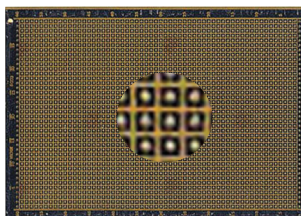
8016 6.0"H x 9.0"L x .062" TH
 0.100" grid Pad-Per-Hole Pattern on both sides, 0.042" holes plated-thru copper. Unrestricted component placement.
 Solder coated pattern
 16-Pin DIP capacity = 165
 Material: FR4
 WW Terminals: T44, T46, T49, T68
 Solder Terminals: T42-1
 WW Socket Pin: R32



106P180-4 10.5"Hx18.0"Lx.062" TH
 0.100" grid Pad-Per-Hole Pattern on both sides. Etched ground plane surrounds 0.080" pads on both sides. 0.042" holes plated-thru copper. Unrestricted component placement.
 Solder coated pattern.
 16-Pin DIP = 175
 Material: FR-4
 WW Terminals: T44, T46, T49, T68
 Solder Terminals: T42-1
 WW Socket Pin: R32



106P70-4 7.0"H x 10.6"L x .062" TH
 0.100" grid Pad-Per-Hole Pattern on both sides. Etched ground plane surrounds 0.080" pads on both sides. 0.042" holes plated-thru copper. Solder coated pattern.
 16-Pin DIP= 175
 Material: FR4
 WW Terminals: T44, T46, T49, T68
 Solder Terminals: T42-1
 WW Socket Pin: R32



8003 4.50"Hx6.50"L x .062" TH
 0.100" grid Pad-Per-Hole Pattern & peripheral Ground Plane on one side only
 Single-sided with no etch & plating on reverse side .042" holes not plated thru .085" square isolated solder pad
 16-Pin DIP= 60
 Material: CEM-1
 WW Terminals: T44, T46, T49, T68
 Solder Terminals: T42-1
 WW Socket Pin: R32