



Chipsmall Limited consists of a professional team with an average of over 10 year of expertise in the distribution of electronic components. Based in Hongkong, we have already established firm and mutual-benefit business relationships with customers from,Europe,America and south Asia,supplying obsolete and hard-to-find components to meet their specific needs.

With the principle of “Quality Parts,Customers Priority,Honest Operation,and Considerate Service”,our business mainly focus on the distribution of electronic components. Line cards we deal with include Microchip,ALPS,ROHM,Xilinx,Pulse,ON,Everlight and Freescale. Main products comprise IC,Modules,Potentiometer,IC Socket,Relay,Connector.Our parts cover such applications as commercial,industrial, and automotives areas.

We are looking forward to setting up business relationship with you and hope to provide you with the best service and solution. Let us make a better world for our industry!



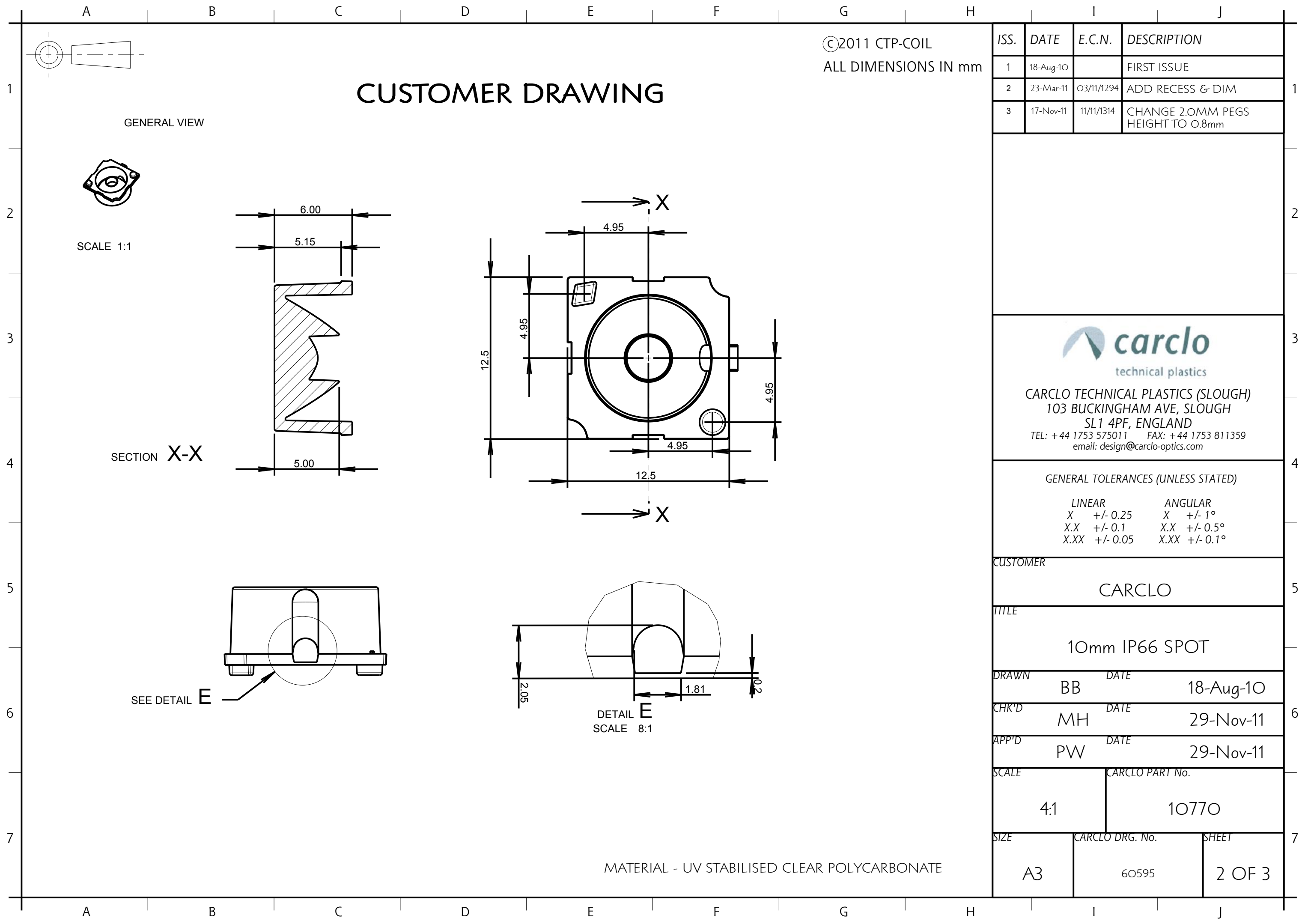
Contact us

Tel: +86-755-8981 8866 Fax: +86-755-8427 6832

Email & Skype: info@chipsmall.com Web: www.chipsmall.com

Address: A1208, Overseas Decoration Building, #122 Zhenhua RD., Futian, Shenzhen, China





©2011 CTP-COIL
ALL DIMENSIONS IN mm

ISS.	DATE	E.C.N.	DESCRIPTION
1	18-Aug-10		FIRST ISSUE
2	23-Mar-11	03/11/1294	ADD RECESS & DIM
3	17-Nov-11	11/11/1314	CHANGE 2.0MM PEGS HEIGHT TO 0.8mm



technical plastics

CARCLO TECHNICAL PLASTICS (SLOUGH)
103 BUCKINGHAM AVE, SLOUGH
SL1 4PF, ENGLAND
TEL: +44 1753 575011 FAX: +44 1753 811359
email: design@carclo-optics.com

GENERAL TOLERANCES (UNLESS STATED)			
LINEAR		ANGULAR	
X	+/- 0.25	X	+/- 1°
X.X	+/- 0.1	X.X	+/- 0.5°
X.XX	+/- 0.05	X.XX	+/- 0.1°

CUSTOMER
CARCLO

TITLE
10mm IP66 SPOT

DRAWN	DATE
BB	18-Aug-10

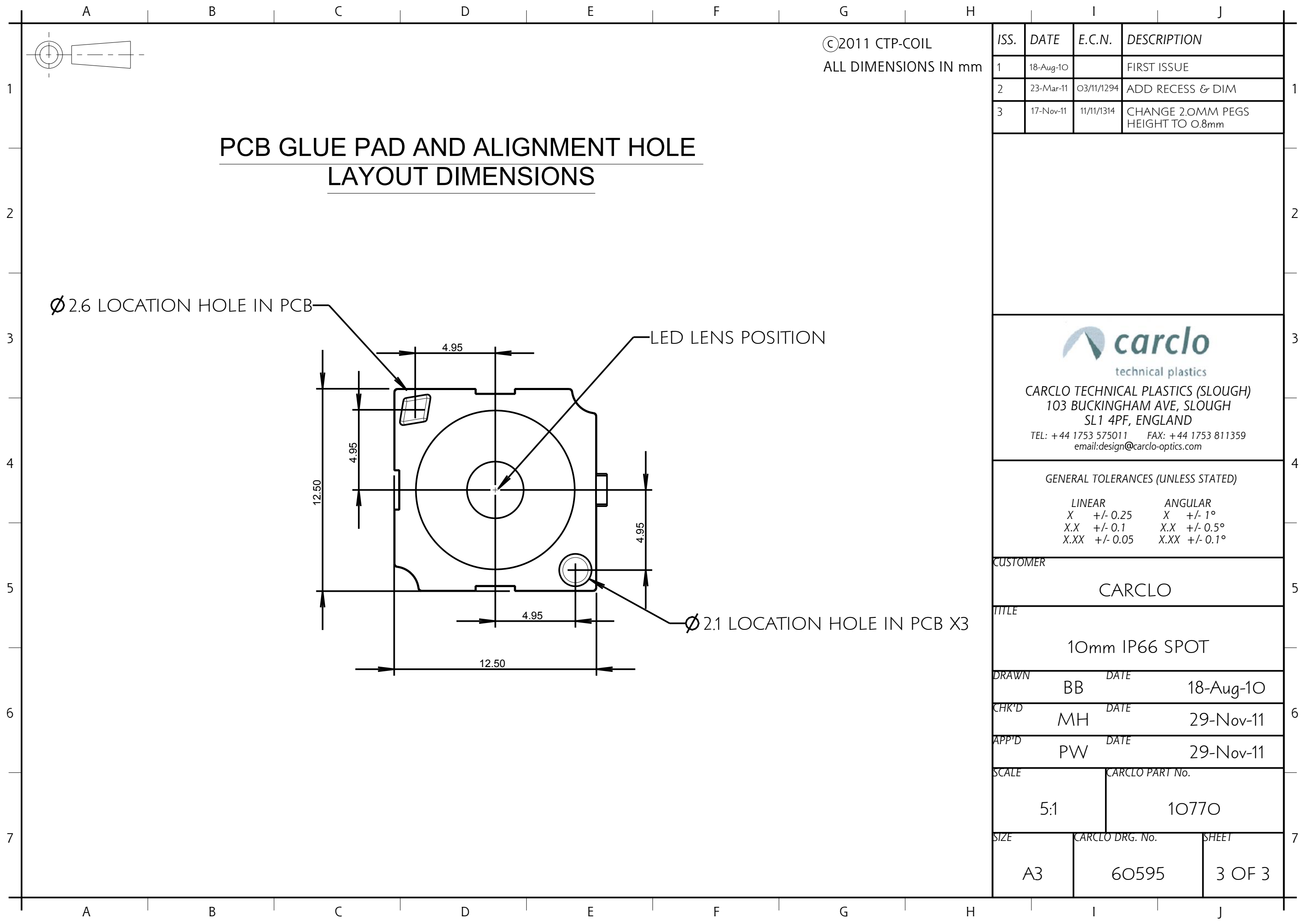
CHK'D	DATE
MH	29-Nov-11

APP'D	DATE
PW	29-Nov-11

SCALE	CARCLO PART No.
4:1	10770

SIZE	CARCLO DRG. No.	SHEET
A3	60595	2 OF 3

MATERIAL - UV STABILISED CLEAR POLYCARBONATE



1 2 3 4 5 6 7

A B C D E F G H I J

©2011 CTP-COIL
ALL DIMENSIONS IN mm


PCB GLUE PAD AND ALIGNMENT HOLE LAYOUT DIMENSIONS

Ø2.6 LOCATION HOLE IN PCB

LED LENS POSITION

Ø2.1 LOCATION HOLE IN PCB X3

ISS.	DATE	E.C.N.	DESCRIPTION
1	18-Aug-10		FIRST ISSUE
2	23-Mar-11	03/11/1294	ADD RECESS & DIM
3	17-Nov-11	11/11/1314	CHANGE 2.0MM PEGS HEIGHT TO 0.8mm



CARCLO TECHNICAL PLASTICS (SLOUGH)
103 BUCKINGHAM AVE, SLOUGH
SL1 4PF, ENGLAND
TEL: +44 1753 575011 FAX: +44 1753 811359
email: design@carclo-optics.com

GENERAL TOLERANCES (UNLESS STATED)	
LINEAR	ANGULAR
X +/- 0.25	X +/- 1°
X.X +/- 0.1	X.X +/- 0.5°
X.XX +/- 0.05	X.XX +/- 0.1°

CUSTOMER	
CARCLO	

TITLE	
10mm IP66 SPOT	

DRAWN	DATE
BB	18-Aug-10

CHK'D	DATE
MH	29-Nov-11

APP'D	DATE
PW	29-Nov-11

SCALE	CARCLO PART No.
5:1	10770

SIZE	CARCLO DRG. No.	SHEET
A3	60595	3 OF 3

A B C D E F G H I J

1 2 3 4 5 6 7

A B C D E F G H I J

©2011 CTP-COIL
ALL DIMENSIONS IN mm


PCB GLUE PAD AND ALIGNMENT HOLE LAYOUT DIMENSIONS

Ø2.6 LOCATION HOLE IN PCB

LED LENS POSITION

Ø2.1 LOCATION HOLE IN PCB X3

ISS.	DATE	E.C.N.	DESCRIPTION
1	18-Aug-10		FIRST ISSUE
2	23-Mar-11	03/11/1294	ADD RECESS & DIM
3	17-Nov-11	11/11/1314	CHANGE 2.0MM PEGS HEIGHT TO 0.8mm



CARCLO TECHNICAL PLASTICS (SLOUGH)
103 BUCKINGHAM AVE, SLOUGH
SL1 4PF, ENGLAND
TEL: +44 1753 575011 FAX: +44 1753 811359
email: design@carclo-optics.com

GENERAL TOLERANCES (UNLESS STATED)	
LINEAR	ANGULAR
X +/- 0.25	X +/- 1°
X.X +/- 0.1	X.X +/- 0.5°
X.XX +/- 0.05	X.XX +/- 0.1°

CUSTOMER	
CARCLO	

TITLE	
10mm IP66 SPOT	

DRAWN	DATE
BB	18-Aug-10

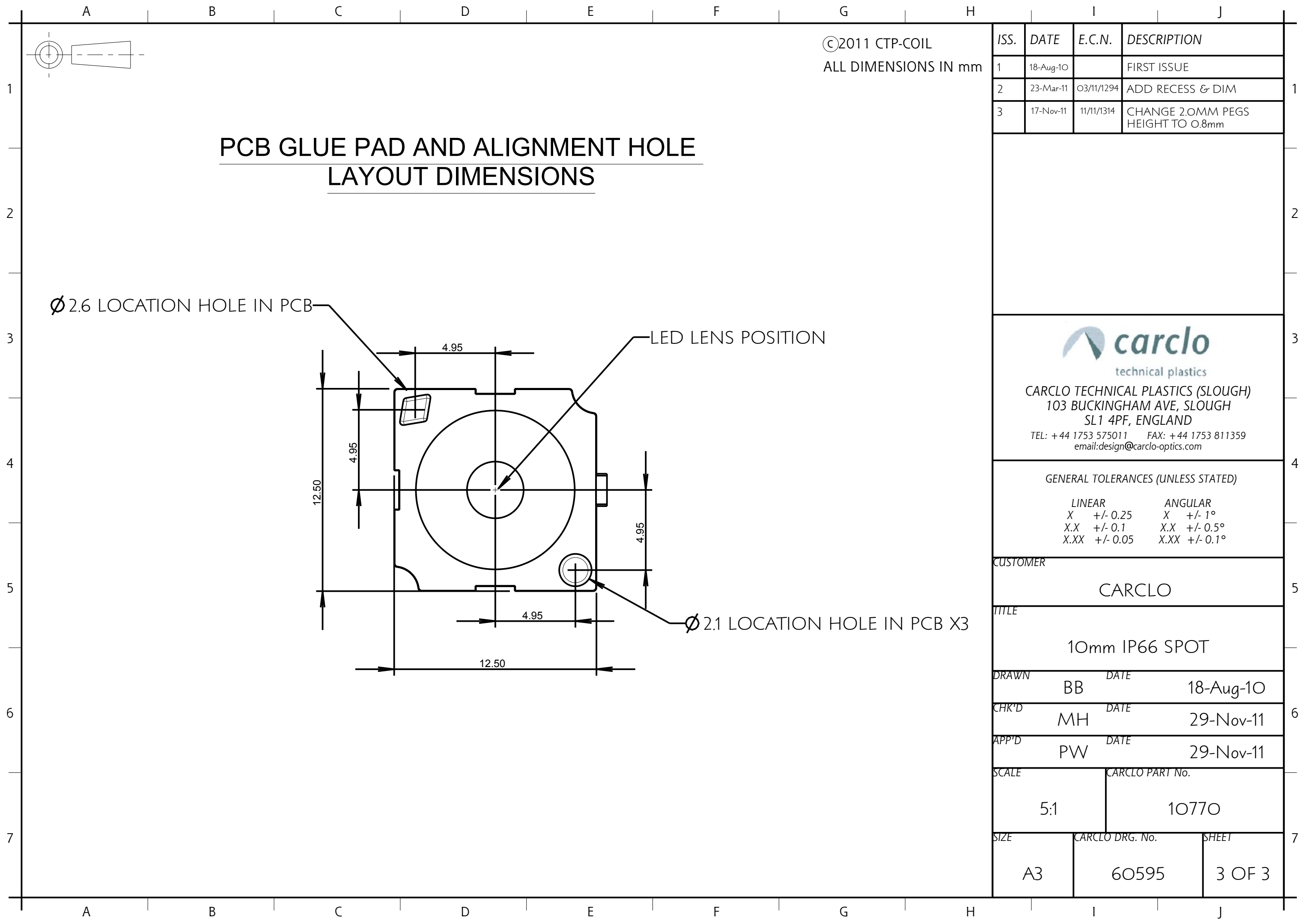
CHK'D	DATE
MH	29-Nov-11

APP'D	DATE
PW	29-Nov-11

SCALE	CARCLO PART No.
5:1	10770

SIZE	CARCLO DRG. No.	SHEET
A3	60595	3 OF 3

A B C D E F G H I J



1 2 3 4 5 6 7

A B C D E F G H I J

©2011 CTP-COIL
ALL DIMENSIONS IN mm

PCB GLUE PAD AND ALIGNMENT HOLE LAYOUT DIMENSIONS

Ø2.6 LOCATION HOLE IN PCB

LED LENS POSITION

Ø2.1 LOCATION HOLE IN PCB X3

ISS.	DATE	E.C.N.	DESCRIPTION
1	18-Aug-10		FIRST ISSUE
2	23-Mar-11	03/11/1294	ADD RECESS & DIM
3	17-Nov-11	11/11/1314	CHANGE 2.0MM PEGS HEIGHT TO 0.8mm

CARCLO
technical plastics

CARCLO TECHNICAL PLASTICS (SLOUGH)
103 BUCKINGHAM AVE, SLOUGH
SL1 4PF, ENGLAND

TEL: +44 1753 575011 FAX: +44 1753 811359
email: design@carclo-optics.com

GENERAL TOLERANCES (UNLESS STATED)	
LINEAR	ANGULAR
X +/- 0.25	X +/- 1°
X.X +/- 0.1	X.X +/- 0.5°
X.XX +/- 0.05	X.XX +/- 0.1°

CUSTOMER	
CARCLO	

TITLE	
10mm IP66 SPOT	

DRAWN	DATE
BB	18-Aug-10

CHK'D	DATE
MH	29-Nov-11

APP'D	DATE
PW	29-Nov-11

SCALE	CARCLO PART No.
5:1	10770

SIZE	CARCLO DRG. No.	SHEET
A3	60595	3 OF 3

A B C D E F G H I J