



Chipsmall Limited consists of a professional team with an average of over 10 year of expertise in the distribution of electronic components. Based in Hongkong, we have already established firm and mutual-benefit business relationships with customers from,Europe,America and south Asia,supplying obsolete and hard-to-find components to meet their specific needs.

With the principle of “Quality Parts,Customers Priority,Honest Operation,and Considerate Service”,our business mainly focus on the distribution of electronic components. Line cards we deal with include Microchip,ALPS,ROHM,Xilinx,Pulse,ON,Everlight and Freescale. Main products comprise IC,Modules,Potentiometer,IC Socket,Relay,Connector.Our parts cover such applications as commercial,industrial, and automotives areas.

We are looking forward to setting up business relationship with you and hope to provide you with the best service and solution. Let us make a better world for our industry!



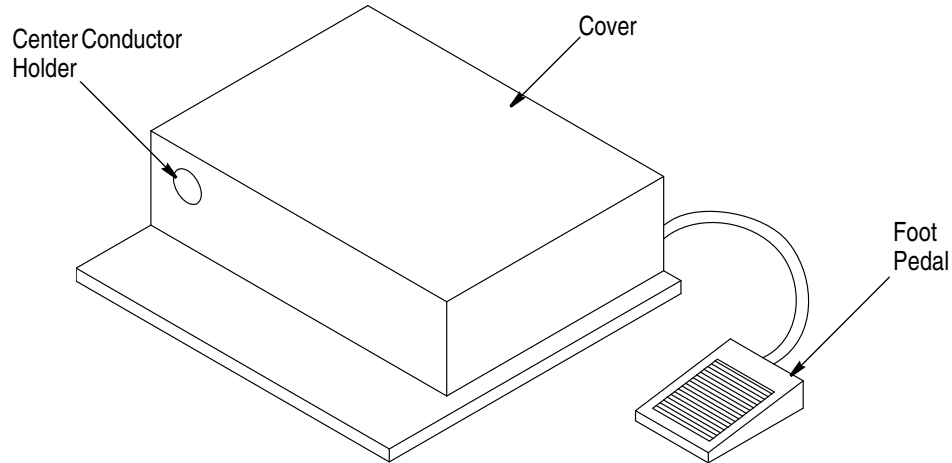
## Contact us

Tel: +86-755-8981 8866 Fax: +86-755-8427 6832

Email & Skype: info@chipsmall.com Web: www.chipsmall.com

Address: A1208, Overseas Decoration Building, #122 Zhenhua RD., Futian, Shenzhen, China





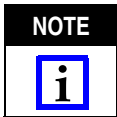
PRODUCTION COAXIAL CABLE POINTER	SEMI-RIGID COAXIAL CABLE	
	TYPE	SIZE (mm [in.])
1080269-1	RG-405/U	2.197 [.086]
1055525-1 ‡	RG-402/U	3.581 [.141]

‡ Replacement Cutter Blade 1055529-1 is Available for This Cable Pointer

Figure 1

## 1. INTRODUCTION

These production cable pointers are used to point the cable type and size listed in Figure 1.



*Dimensions in this instruction sheet are in metric units [with U.S. customary units in brackets]. Figures are not drawn to scale.*

Reasons for reissue of this instruction sheet are provided in Section 7, REVISION SUMMARY.

## 2. DESCRIPTION

The production cable pointers are hand-fed pointers that use a small diameter cutter to allow "pointing" of pre-bent cable assemblies. Various standard center conductor lengths may be obtained by means of a simple adjustment.

## 3. POINTING PROCEDURE

1. Cut the coaxial cable to the length required.
2. Trim the cable jacket to expose the center conductor. The following production cable trimmers are available.

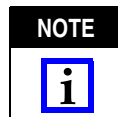
Production Cable Trimmer	Cable Size (mm [in.])
1055530-1	2.197 [.086]
1055526-1	3.581 [.141]

3. Slowly insert the cable center conductor into the center conductor holder.
4. With no pressure on the cable, press the foot pedal to begin pointer assembly operation.
5. Slowly feed the cable (with light pressure) in until the cable face stops against the center conductor holder.
6. Remove the cable. The proper center conductor length and point should now be achieved. If necessary, refer to Section 4 and Section 5.

## 4. CENTER CONDUCTOR LENGTH ADJUSTMENT

To change the length of the center conductor, proceed as follows:

1. Loosen the center conductor holder set screw.
2. Using appropriate gripping material (such as a pencil eraser), turn the center conductor holder set screw *clockwise* to shorten the center conductor length; turn the center conductor holder set screw *counterclockwise* to lengthen the center conductor.



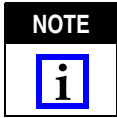
*One complete turn equals approximately 0.15 mm [.006 in.].*

3. Tighten the set screw lightly so that no damage is done to the threads on the center conductor holder.



*There is a small piece of fluoropolymer in the threaded hole which prevents the set screw from touching the threads on the center conductor holder. DO NOT lose the piece of fluoropolymer.*

**5. CUTTER REPLACEMENT** (See Figure 2)



*Replacement Cutter Blade 1055529-1 is available for Cable Pointer 1055525-1.*

1. Turn "off" the power.
2. Remove the cover.
3. While holding the cutter holder with a pair of pliers, loosen the 5/16-24 UNF nut at rear of the spindle.
4. Remove the draw bar (5/16-24 UNF threaded rod).
5. Unlock the two 7/8-in. diameter collars from the spindle using a hex wrench.
6. Slide the spindle back through the bearings to separate it from the cutter holder.
7. Remove the cutter holder and front bearing. Hold the cutter holder and front bearing, and with a slight rocking motion, pull them away from the plate.

8. Clean with pressurized air.



*Make sure to follow all local practices, particularly wearing safety glasses, when using pressurized air.*

9. Replace the cutter blade. Reverse these steps to re-assemble.

**6. MAINTENANCE**

Occasionally remove the cover and the cable holder and clean these areas with pressurized air. If necessary, clean the shavings with a razor knife or tweezers.



*Make sure to follow all local practices, particularly wearing safety glasses, when using pressurized air.*

**7. REVISION SUMMARY**

Revisions to this instruction sheet include:

- Changed company name and logo
- Replaced trademark with fluoropolymer in CAUTION of Step 3 of Section 4

**Cutter Replacement**

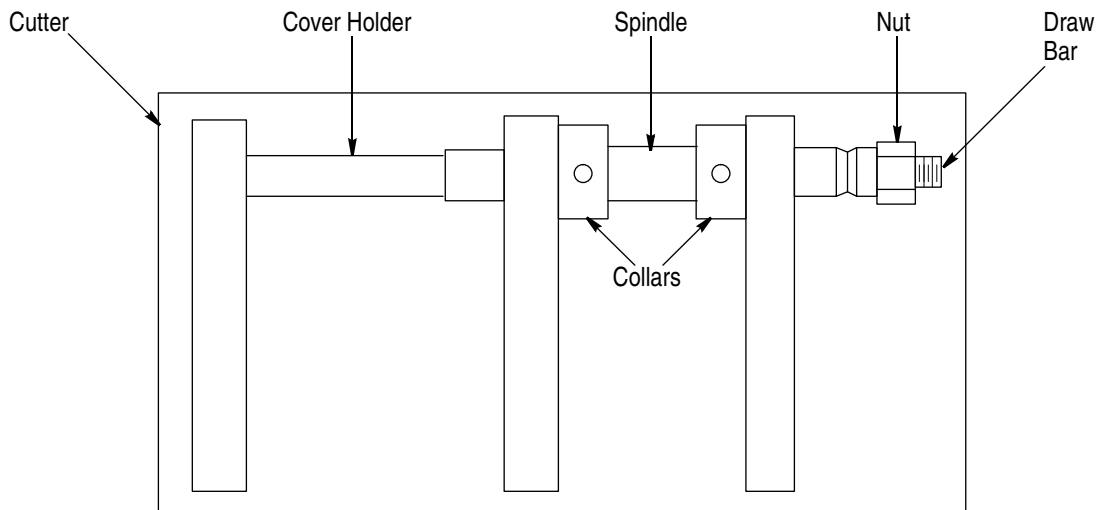


Figure 2