



Chipsmall Limited consists of a professional team with an average of over 10 year of expertise in the distribution of electronic components. Based in Hongkong, we have already established firm and mutual-benefit business relationships with customers from,Europe,America and south Asia,supplying obsolete and hard-to-find components to meet their specific needs.

With the principle of "Quality Parts,Customers Priority,Honest Operation,and Considerate Service",our business mainly focus on the distribution of electronic components. Line cards we deal with include Microchip,ALPS,ROHM,Xilinx,Pulse,ON,Everlight and Freescale. Main products comprise IC,Modules,Potentiometer,IC Socket,Relay,Connector.Our parts cover such applications as commercial,industrial, and automotives areas.

We are looking forward to setting up business relationship with you and hope to provide you with the best service and solution. Let us make a better world for our industry!



Contact us

Tel: +86-755-8981 8866 Fax: +86-755-8427 6832

Email & Skype: info@chipsmall.com Web: www.chipsmall.com

Address: A1208, Overseas Decoration Building, #122 Zhenhua RD., Futian, Shenzhen, China



108G

MINIATURE EPOXY POTTED AUDIO TRANSFORMER

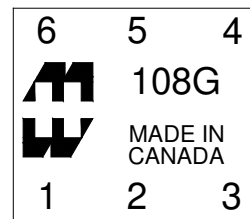
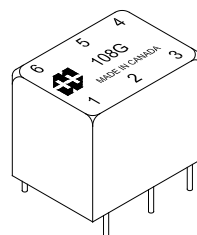
Audio input, line matching and output transformers
Epoxy potted in an attractive molded case, Pin type, P.C. board
mount, (min. 0.187" length)

Rugged epoxy potted construction produces a completely
sealed unit withstanding severe environmental conditions.

In some models where no center tap is present (on the secondary), pin 5 is omitted.

Secondary may be used as primary and primary as secondary.

Will withstand soldering for 10 sec. @ 260 degrees C, ambient temp. 85 degrees C max.



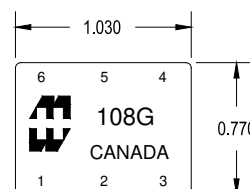
Power level: 500mw @ 300 Hz. to 50 Khz.

-Freq. range @ +0 dbm is 300 Hz. to 50 Khz. +/- 1.5db

-Freq. range @ +15 dbm is 300 Hz. to 50 Khz. +/- 1.5db

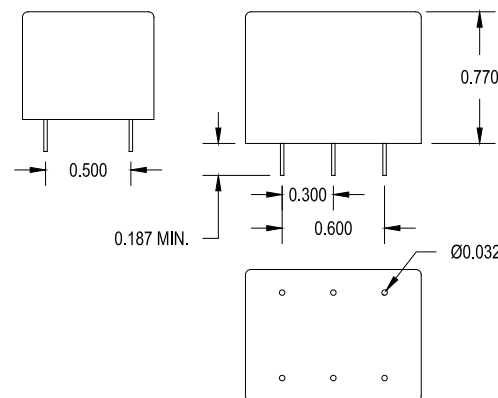
-Freq. range @ +27 dbm is 300 Hz. to 50 Khz. +/- 1.5db

-Freq. measurements with no D.C. saturation.

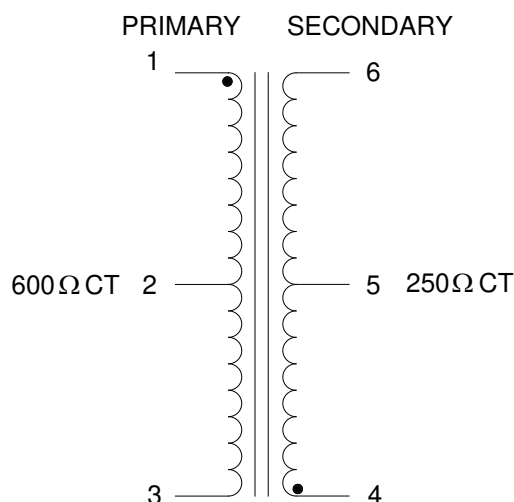


ELECTRICAL SPECIFICATIONS

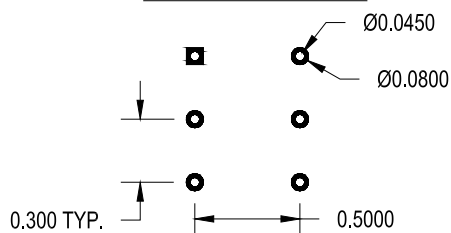
Characteristic	Typical
Input Impedance	600 ΩCT
Output Impedance	250 ΩCT
Output Power	0.500 Watts
DCR	
Primary 1-3	54 Ω (27Ω/27Ω)
Secondary 4-6	27.0 Ω (13.5Ω/13.5Ω)
Inductance	@ 1.0 kHz, 1.0 V OC
Primary	0.95 Hy
Secondary	0.38 Hy
Leakage Inductance	3.00 mH
Impedance	@ 1.0 kHz, 1.0 V OC
Primary	8.20 KΩ
Secondary	3.33 KΩ
Frequency Response	±1.5db from 300Hz to 50KHz
Unbalanced DC	6mA Max.
Turns ratio	1.55:1
Dielectric Strength	100 Vrms
Temperature Range	-40 To 105°C**



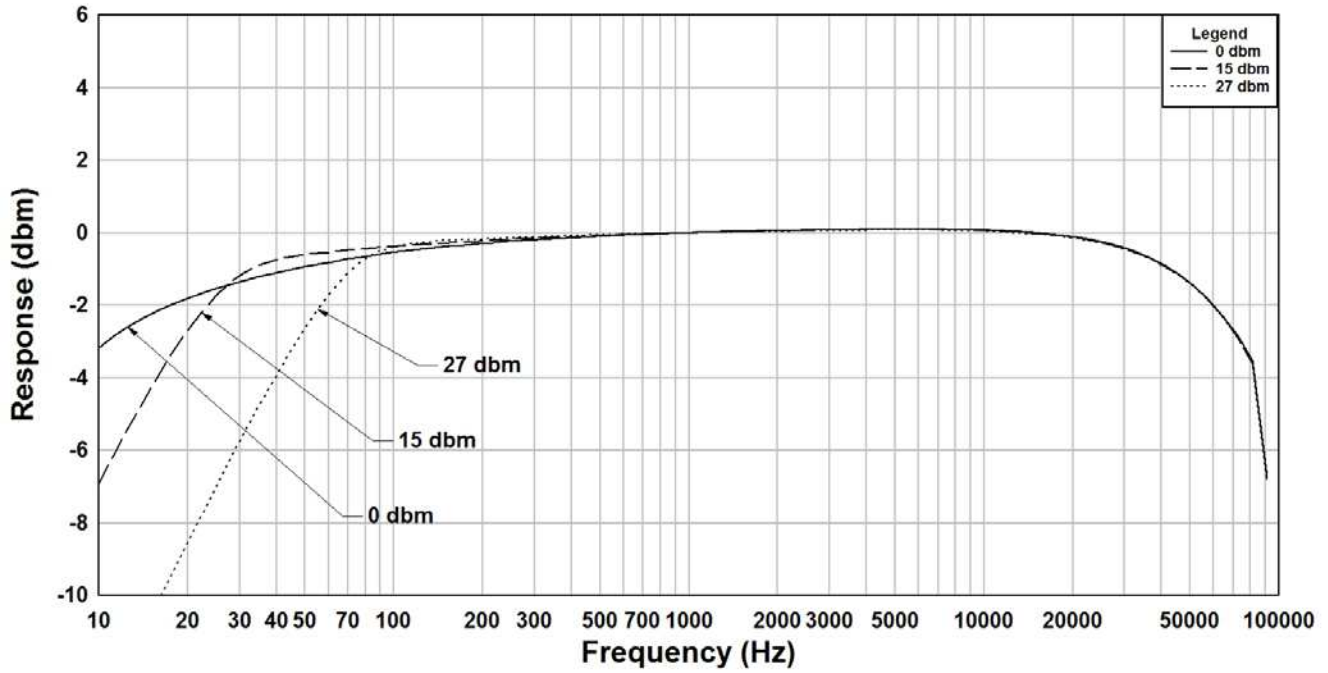
SCHEMATIC DIAGRAM



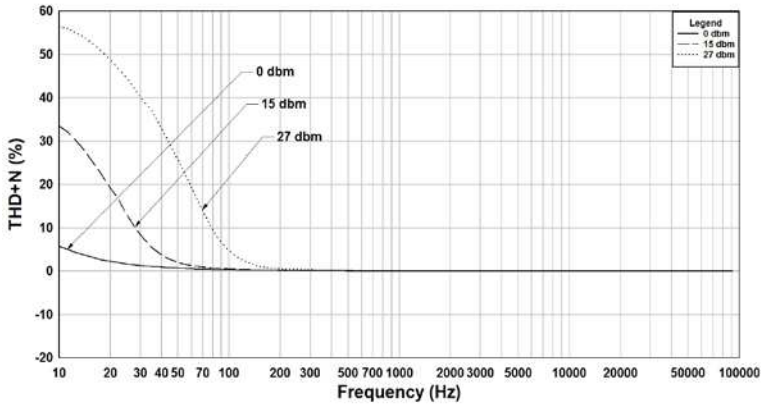
PCB LAYOUT



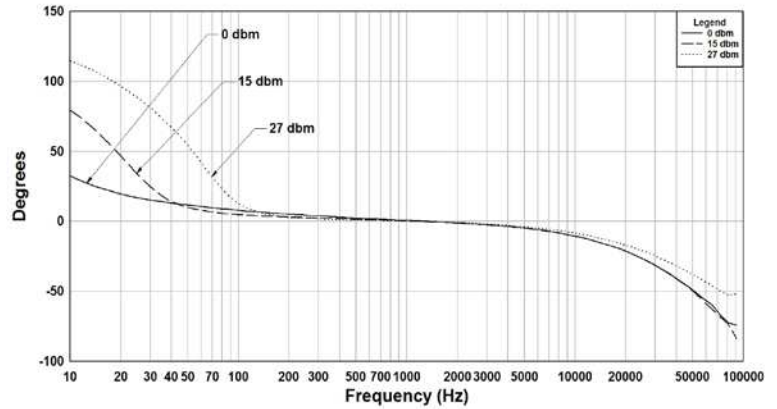
108G Rs=600, RI= 250 Frequency Response



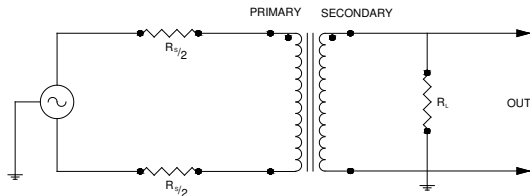
108G Rs=600, RI= 250 THD+N



108G Rs=600, RI= 250 Phase Shift



TYPICAL TEST CIRCUIT



Measurement instruments
 Hp4192a impedance analyzer
 Hp3456a DVM
 Keithley 2002 DVM
 D scope series iii audio analyzer

**The epoxy that is used to cast these parts has a workable temperature range of -40°C to $+105^{\circ}\text{C}$
 Under a normal rate of change, this does not include thermal shock.
 Variations in the transformer materials and environmental conditions may reduce the workable temperature range.

This drawing and the information in it is the property of Hammond Manufacturing. It may not be reproduced, transmitted or used in any manner whatsoever without the written permission of Hammond Manufacturing. Data subject to change without notice.