



Chipsmall Limited consists of a professional team with an average of over 10 year of expertise in the distribution of electronic components. Based in Hongkong, we have already established firm and mutual-benefit business relationships with customers from,Europe,America and south Asia,supplying obsolete and hard-to-find components to meet their specific needs.

With the principle of “Quality Parts,Customers Priority,Honest Operation,and Considerate Service”,our business mainly focus on the distribution of electronic components. Line cards we deal with include Microchip,ALPS,ROHM,Xilinx,Pulse,ON,Everlight and Freescale. Main products comprise IC,Modules,Potentiometer,IC Socket,Relay,Connector.Our parts cover such applications as commercial,industrial, and automotives areas.

We are looking forward to setting up business relationship with you and hope to provide you with the best service and solution. Let us make a better world for our industry!



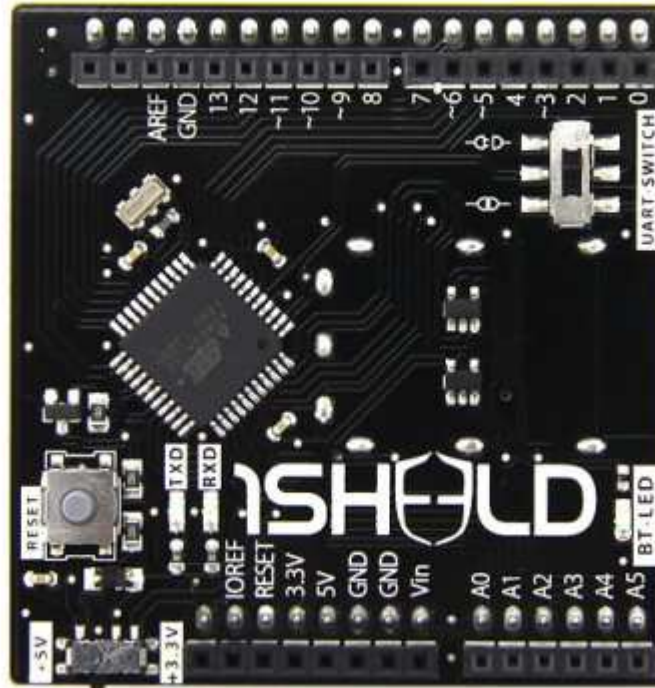
## Contact us

Tel: +86-755-8981 8866 Fax: +86-755-8427 6832

Email & Skype: info@chipsmall.com Web: www.chipsmall.com

Address: A1208, Overseas Decoration Building, #122 Zhenhua RD., Futian, Shenzhen, China





(images/product/1sheeld\_01.jpg)

## 1Sheeld - Replace your Arduino shields with smartphone

SKU: 109990038



**WIO LINK is LIVE at Kickstarter!**

([https://www.kickstarter.com/projects/seeed/wio-link-3-steps-5-minutes-build-your-iot-applicat/description?ref=banner\\_depot](https://www.kickstarter.com/projects/seeed/wio-link-3-steps-5-minutes-build-your-iot-applicat/description?ref=banner_depot))



## Description

Imagine an Arduino Shield that can be configured to be an LCD, GPS, Wifi, or any shield you may think of!



1Shield is a new easily configured shield for Arduino. It is connected to a mobile app that allow the usage of all of Android smartphones' capabilities such as LCD Screen, Gyroscope, Switches, LEDs, Accelerometer, Magnetometer, GSM, Wi-Fi, GPS ...etc. into your Arduino sketch.

Basically, our product consists of two parts. The first part is a shield that is physically connected to your Arduino board and acts as a wireless middle-man, piping data between Arduino and any Android smartphone via Bluetooth. The second part is a software platform and app on Android smartphones that manages the communication between our shield and your smartphone and let you choose between different available shields.

By doing that, you can use 1Shield as input or output from Arduino and make use of all of the sensors and peripherals already available on your Android smartphone instead of buying the actual shields. You can use it to control an RC car using the phone's gyroscope, or even tweet when someone enters the room!

The objective of our product is to provide faster and cheaper ways of prototyping your Arduino projects.

We introduced a new dimension to Arduino shields, by using the power of smartphones to simplify the electronics prototyping process, we will provide the best and the most convenient solution for hobbyists who need affordable prototyping with the lowest costs.

### **What can you do with 1Sheeld?**

Sky is the limit! You have a powerful Android smartphone that can be used to control your RC car, tweet when plants are thirsty, and have fun playing with your friends.

We have already developed a variety of shields for 1Sheeld like LED, Toggle Button, Buzzer, Slider, LCD, 7-Segment, Keypad, Music Player, Game Pad, Notifications, Twitter, Facebook, Foursquare, Gyroscope, SMS, Flashlight and Mic. And we have many other shields coming in the pipeline.

**Buzzer Shield** - Use the speaker in your smartphone buzz a certain tone, no need to buy a speaker and hook it up to Arduino, make this as the output function triggered by Arduino when a certain action happens.

**Keypad Shield** - Use your smartphone touch screen as a keypad. Want to open your room with a pin code? With just few code lines you have the advantage of using a 4x4 keypad so you can enter a password to trigger Arduino and open your door using a motor.

**LED Shield** - Use your smartphone screen as a simple LED to test your output pins.

**Seven Segments Shield** - Use your smartphone screen as a seven segment display. Seven segments are awesome electronic display for displaying numbers.

**Twitter Shield** - Bringing twitter into your Arduino sketch. Twitter shield allows you to send tweets with only 1 line of code in your sketch.

**Facebook Shield** - Helps you update your status on Facebook under certain conditions declared in your sketch.

**Foursquare Shield** - Now you can check-in at any place automatically given the ID of the place if a certain condition is met.

**Email Shield** - Send emails when any hardware event happens.

**Toggle Button Shield** - Use your smartphone touch screen as an on or off button. Just two simple words can fit in your code so you can control things by checking the state of toggle button on your smartphone.

**Push Button Shield** - Use your smartphone screen as a virtual push button to make it easier to test your ideas that uses a real push button.

**Skype Shield** - Skype is now in your sketch, feel free to call or video-call others when a certain condition is met.

**Slider Shield** - Use your smartphone touch screen as a slider. It's always cool to control things using a slider like controlling light intensity or motors, so here comes the slider shield to help you control peripherals with your smartphone.

**SMS Shield** - Allows you to send an SMS to a phone number when a certain trigger is on.

**Camera Shield** - Allows you to take pictures when a certain event happens, use your Arduino board to trigger the camera in your smartphone, you can take photos in the dark as well with the flash light.

**Gyroscope Sensor Shield** - Tinker with the Gyroscope sensor in your smartphone and turn on some LEDs while playing with the by getting the values on the 3-Axis (X, Y & Z), you can use it also to drive an Arduino controlled car.

**Mic Shield** - Use the sound level to trigger a hardware action, sense the level of noise to trigger an alarm, how about opening your door with a secret knock!

**Accelerometer Shield** - Get the acceleration of a moving objects is easier now by writing a simple line in your sketch, the shield gets you the data of X, Y and Z axis of the accelerometer sensor in your smartphone.

### **Add your own shields?**

We intend to make the platform as open as possible, that's why we will release development specifications and APIs to ease to Android developers to make their own shields based on our platform, developers then can upload these shields to Google play store. Thus, you will have only one physical Arduino shield and unlimited number of shields!

### **Technical Specification**

- Uses a standard HC-06 Bluetooth adapter (Bluetooth 2.1)
- Range up to 30 feet
- Running on an Atmel ATmega162
- 16 MHz operating frequency
- Communicate with Arduino using UART